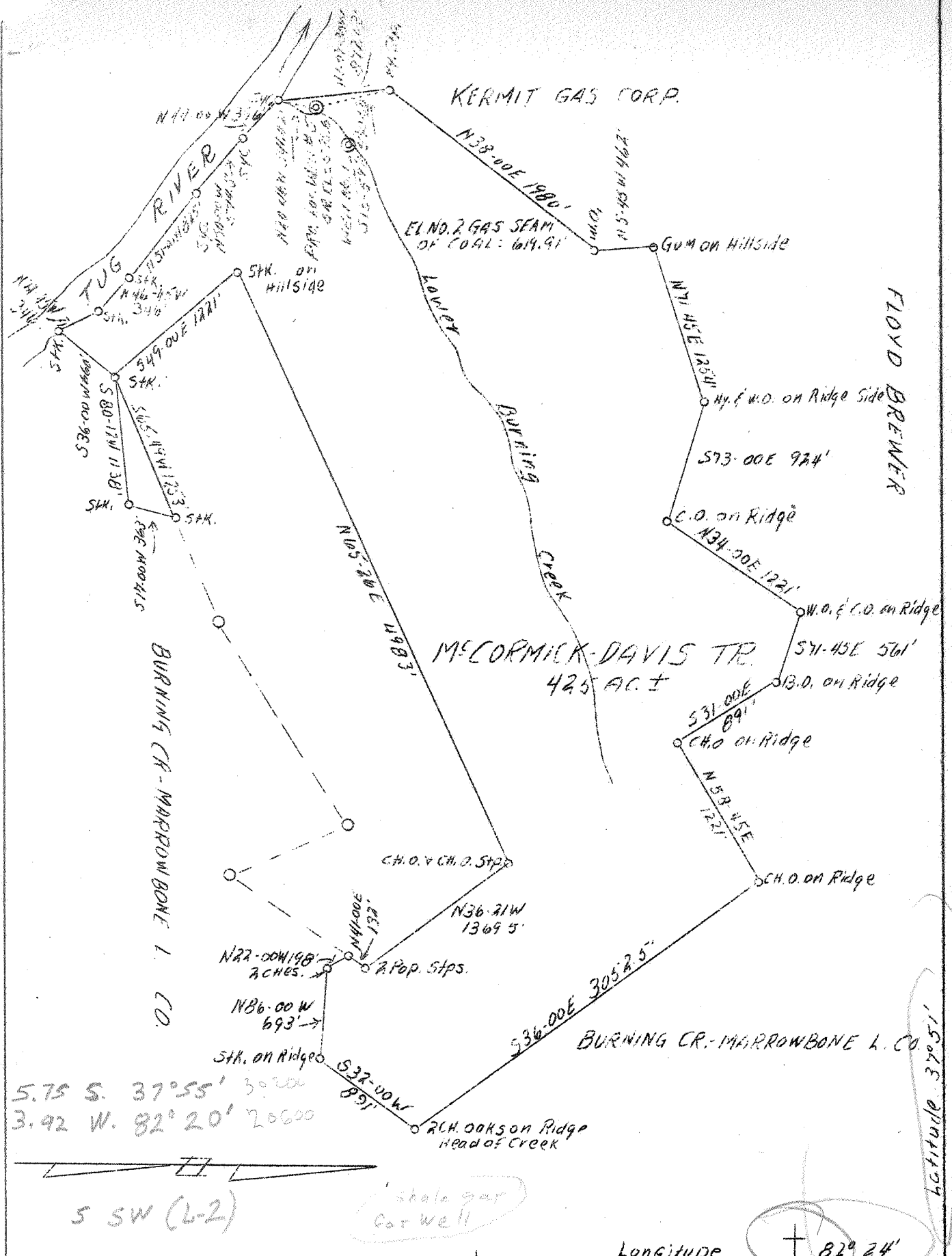
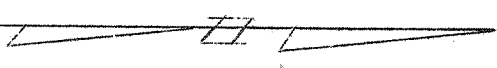


4 M

P



5.75 S. 37°55' 30200
3.92 W. 82°20' 25600



5 SW (L-2)

shale gas cor well

Longitude

+ 82° 24'

Latitude 37° 51'

Company Kermit Gas Corp.
Address Williamson, W.Va.
Farm McCormick-Davis
Tract 1
Acres 425
Well(Farm)No. 5
Quadrangle Naugatuck - C
County Mingo
District Kermit
Eng. W. E. Good
Eng. Reg. No. 270
File No. 3323-sf
Scale 1" = 1000'

STATE OF WEST VIRGINIA
Department of Mines
OIL AND GAS DIVISION
Charleston

WELL LOCATION MAP

File No. MINGO-48

x Denotes location of well on U.S. Topographic Maps, scale 1 to 62,500, latitude and longitude lines being represented by border lines as shown.

- Denotes one inch spaces on border line of original tracing.

deep well

McCormick-Davis No. 5 Well.

Kermit District, Mingo County, W. Va.

By Kermit Gas Corporation.

Permit No. Min-48.

Elevation, 593.6' L.

213 M. cu. ft. gas.

Located 5.76 mi. S. of 37° 55' and 3.92 mi. W. of 82° 20'—C—Nau-
tuck Quadrangle.

At mouth of Lower Burning Creek, (north side).

0.45 mi. S. E. of Kermit; 2.25 mi. S. W. of Selwyn.

	Top.	Bottom.	Thickness.	Elevation (top)
Big Lime -----	1058	1214	156	— 464
Big Injun Sand -----	1214	1262	48	— 620
Berea Sand -----	1744	1770?	26±	—1150
Corniferous Lime -----	3046			—2452

Thickness, Devonian Shales, 1276± feet. Total depth, 3046'.

Remarks: Completed May 28, 1939. Filled to 2705'. Shot at 2705'.

No water. Gas show, 694'.

Maxton gas at 1014' (231 M.).

Big Lime gas, 1094' (41 M.).

Shale gas, 2425', increasing gradually to 2680', (205 M.).

On 425 acres.

WEST VIRGINIA DEPARTMENT OF MINES

OIL & GAS DIVISION

WELL RECORD

Permit No. Min-48

Gas Well

Wugatuck Quad. *— C*

CASING & TUBING

Company	Kermit Gas Corp.,	13	42-6	42-6
Address	Williamson, W. Va.	8-1/4	882	882
Farm	McCormic & Davis ACRES 425	6-5/8	1076	1076
Location	Lower Burning Creek	2	2705	2705
Well No.	5 ELEV. 593.6			
District	Kermit, Mingo County			
Surface & Mineral	T. J. Davis, etal, Cincinnati, O.			Packer - Combination
Commenced	March 29, 1939			Size -
Completed	May 28, 1939			Depth set - 1760
Date shot	6/9/39 - Depth 2705			Coal at 76'
Open Flow	20/10ths Water in 2 inch			
Volume	213,120 c.f. (Shale gas)			
Water	None			

Formation Color ^{Har} *TOP BASE RESULT* *Formation Color* ^{Har} *TOP BASE RESULT*

Surface		s	0	46							
Sand			46	76	broken						
Coal			76	78							
Slate			78	165							
Lime			165	208	broken						
Slate			208	400							
Sand		s	400	530	Gas show	@ 694					
Lime	gritty		530	735							
Sand			735	762							
Lime			762	780							
Slate			780	802							
Red Rock			802	812							
Slate			812	820							
Lime			820	835							
Red Rock			835	852							3046
Slate			852	876							594
Sand			876	885							2452
Red Rock			885	892							
Slate			892	920							
Lime			920	953							
Slate			953	995							
Lime			995	1010	Pay at 1014						
Maxton Sand			1010	1022	Gauged 30/10 water in 2" (231 MCF)						
Little Lime			1022	1058							
Big Lime			1058	1214	Pay at 1094' Gauged 15/10, water in 1" (41 MCF)						
Injun Sand			1214	1262							
Slate & shells			1262	1712							
Brown Shale			1712	1744							
Berea Sand			1744	1890	broken from 1770 thru sand						
White Slate			1890	1905							
Brown Shale			1905	1992							
Gray Shale			1992	2145							
Brown Shale			2145	2325							
Gray Shale			2325	2400							
Brown Shale			2400	2708							
White Slate			2708	2947							
Brown Shale			2947	3046							
Corniferous			3046		Hole filled to 2705						

Gas at 2425, gradually increasing to 2680.
Gauged 24/10 water in 2" (205 MCF)