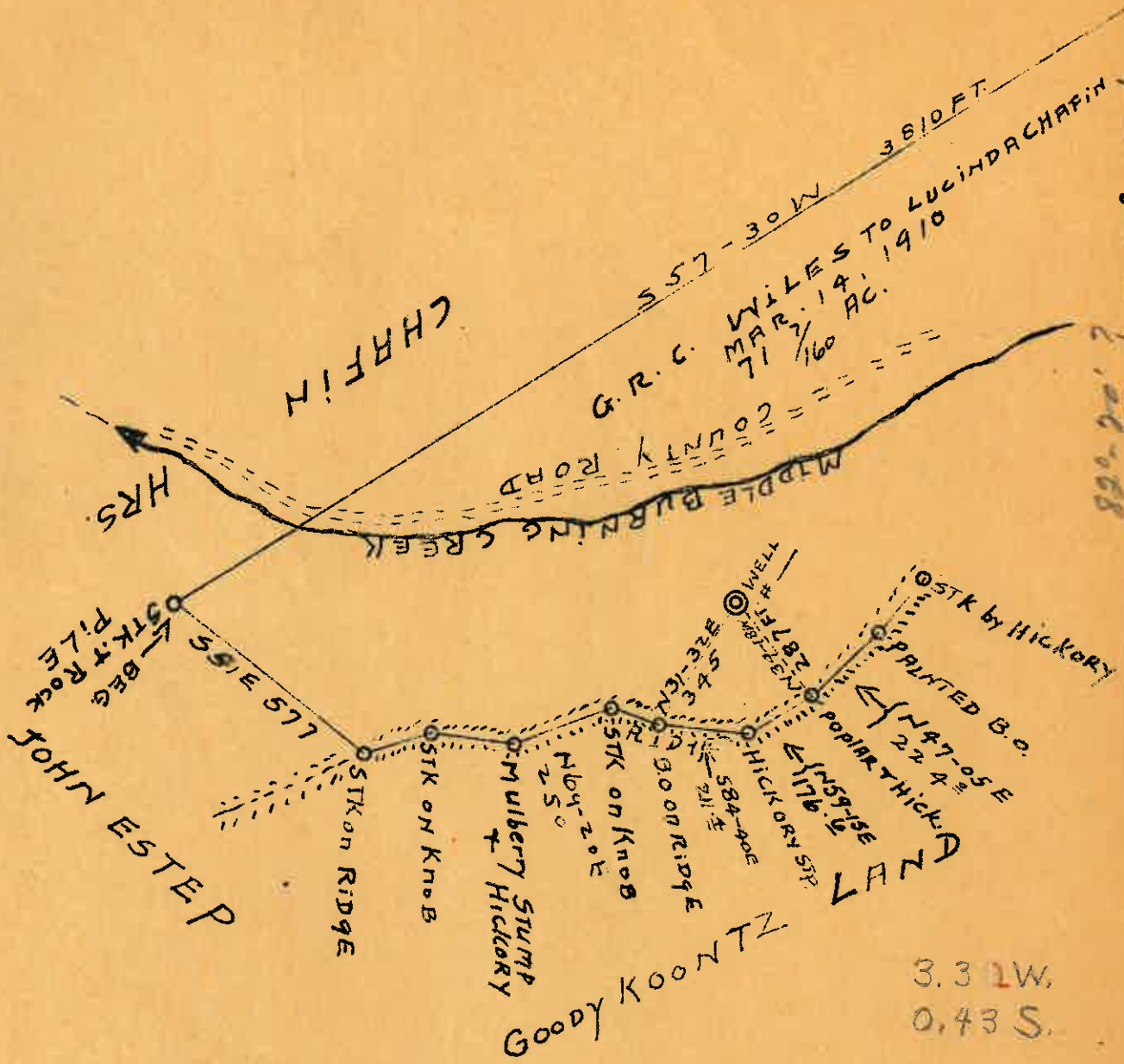


LATITUDE 37° 50'

M



-1
-2
-3



- NEW LOCATION
- DRILL DEEPER
- ABANDONMENT

COMPANY - M.C. PLACKBURN
 ADDRESS - Kermit, W. VA
 FARM - LUCINDA CHAFIN
ACRES - 71 7/160
 LEASE # _____
 WELL #2 SERIAL # _____
 ELEVATION 864
 QUAD RANGE - NAVAGATUCK
 COUNTY - MINGO, DIST. ^{Kermit} WAREFIELD
 ENGINEER - Refus M. Reed
 REGISTRATION # - TITLED BONDED ENGINEER (Ky)
 OFFICIAL POSITION - Co. Engineer
 DATE - JUNE 12 - 1940
 SCALE 1 in. = 400 FT.

STATE OF W. VA.
 DEPT. OF MINES
 CHARLESTON
 WELL LOCATION
 File No. - MINGO-54
 + DENOTES LOCATION
 OF WELL ON U.S. TOPOGRAPHIC
 MAPS. SCALE 1/62500', LATITUDE
 AND LONG. LINES BEING REP.
 BY BORDER LINES AS SHOWN
 - DENOTES ONE INCH
 SPACES ON BORDER
 LINE OF ORIGINAL
 TRACING.

6-6 243

WEST VIRGINIA DEPARTMENT OF MINES
OIL & GAS DIVISION
W E L L R E C O R D

Permit No. Min-54
Naugatuck Quad.

Gas Well

CASING & TUBING

| | | | | |
|-------------------|----------------------------------|--------|--------|-------------------------|
| Company | M. C. Blackburn | 10 | 38-5 | 38-5 |
| Address | Kermit, W. Va. | 8-1/4 | 206-4 | 206-4 |
| Farm | Chaffins ACREs 72 | 6-5/8 | 1230-0 | 1230-0 |
| Location | Middle Burning Creek | 5-3/16 | 1495-0 | 1495-0 |
| Well No. | 2 ELEV. 750 | | | |
| District | Warfield - Mingo County | | | Packer - |
| Surface & Mineral | Lucinda Chaffins, Kermit, W. Va. | | | Size - |
| Commenced | Aug. 29, 1940 | | | Depth set - 1230 - 1495 |
| Completed | Oct. 28, 1940 | | | |
| Date Shot | 10/29/40 - depth 2876 | | | Coal at 137' |
| Open Flow | 14/10ths water in 2" | | | |
| Volume | 293,000 c.f. | | | |
| Rock Pressure | 350 lbs. 24 hrs. | | | |
| Fresh Water | 375 | | | |
| Salt Water | 765 | | | |

| | | | |
|----------------|------|------|--------|
| Soil | 0 | 37 | |
| Slate | 37 | 42 | |
| Sand | 42 | 70 | |
| Slate | 70 | 137 | |
| Coal | 137 | 140 | |
| Slate | 140 | 310 | |
| Sand | 310 | 330 | |
| Slate&Shell | 330 | 425 | W 375 |
| Sand | 425 | 475 | |
| Slate & Shell | 475 | 645 | |
| Gas Sand | 645 | 746 | |
| Slate | 746 | 748 | |
| Salt Sand | 748 | 820 | W 765 |
| Slate | 820 | 830 | |
| Salt Sand | 830 | 905 | |
| Slate & Shell | 905 | 1008 | |
| Sand | 1008 | 1028 | G 1010 |
| Black Lime | 1028 | 1056 | |
| Red Rock | 1056 | 1085 | |
| Slate & Shell | 1085 | 1098 | |
| Red Rock | 1098 | 1110 | |
| Slate & Shell | 1110 | 1205 | |
| Maxon Sand | 1205 | 1223 | G 1207 |
| Slate | 1223 | 1228 | |
| Lime&Shells | 1228 | 1234 | |
| Slate&Shells | 1234 | 1270 | |
| Little Lime | 1270 | 1322 | |
| Big Lime | 1322 | 1484 | |
| Injun Sand | 1484 | 1565 | |
| Slate&Shells | 1565 | 1825 | |
| Wear Sand | 1825 | 1860 | |
| Slate & Shells | 1860 | 2017 | |
| Sunberry | 2017 | 2038 | |
| Berea Sand | 2038 | 2145 | |
| Shale | 2145 | 2225 | |
| Light Shale | 2225 | 2425 | |
| Brown Shale | 2425 | 2545 | |
| Light Shale | 2545 | 2695 | |
| Brown Shale | 2695 | 2865 | G 2755 |
| White Shale | 2865 | 2876 | |