

WW-7
8-30-06



West Virginia Department of Environmental Protection
Office of Oil and Gas

WELL LOCATION FORM: GPS

API: 47-059-00569 WELL NO.: 808647

FARM NAME: Cotiga Development Company #13

RESPONSIBLE PARTY NAME: Core Appalachia Operating, LLC

COUNTY: Mingo DISTRICT: Harvey

QUADRANGLE: Myrtle

SURFACE OWNER: Cotiga Development Company

ROYALTY OWNER: Cotiga Development Company

UTM GPS NORTHING: 4189178.28m

UTM GPS EASTING: 398410.89m GPS ELEVATION: 372.16m [1220.98']

RECEIVED
Office of Oil and Gas
MAR 8 2019
WV Department of
Environmental Protection

The Responsible Party named above has chosen to submit GPS coordinates in lieu of preparing a new well location plat for a plugging permit or assigned API number on the above well. The Office of Oil and Gas will not accept GPS coordinates that do not meet the following requirements:

- Datum: NAD 1983, Zone: 17 North, Coordinate Units: meters, Altitude: height above mean sea level (MSL) – meters.
- Accuracy to Datum – 3.05 meters
- Data Collection Method:

Survey grade GPS : Post Processed Differential

Real-Time Differential

Mapping Grade GPS : Post Processed Differential

Real-Time Differential

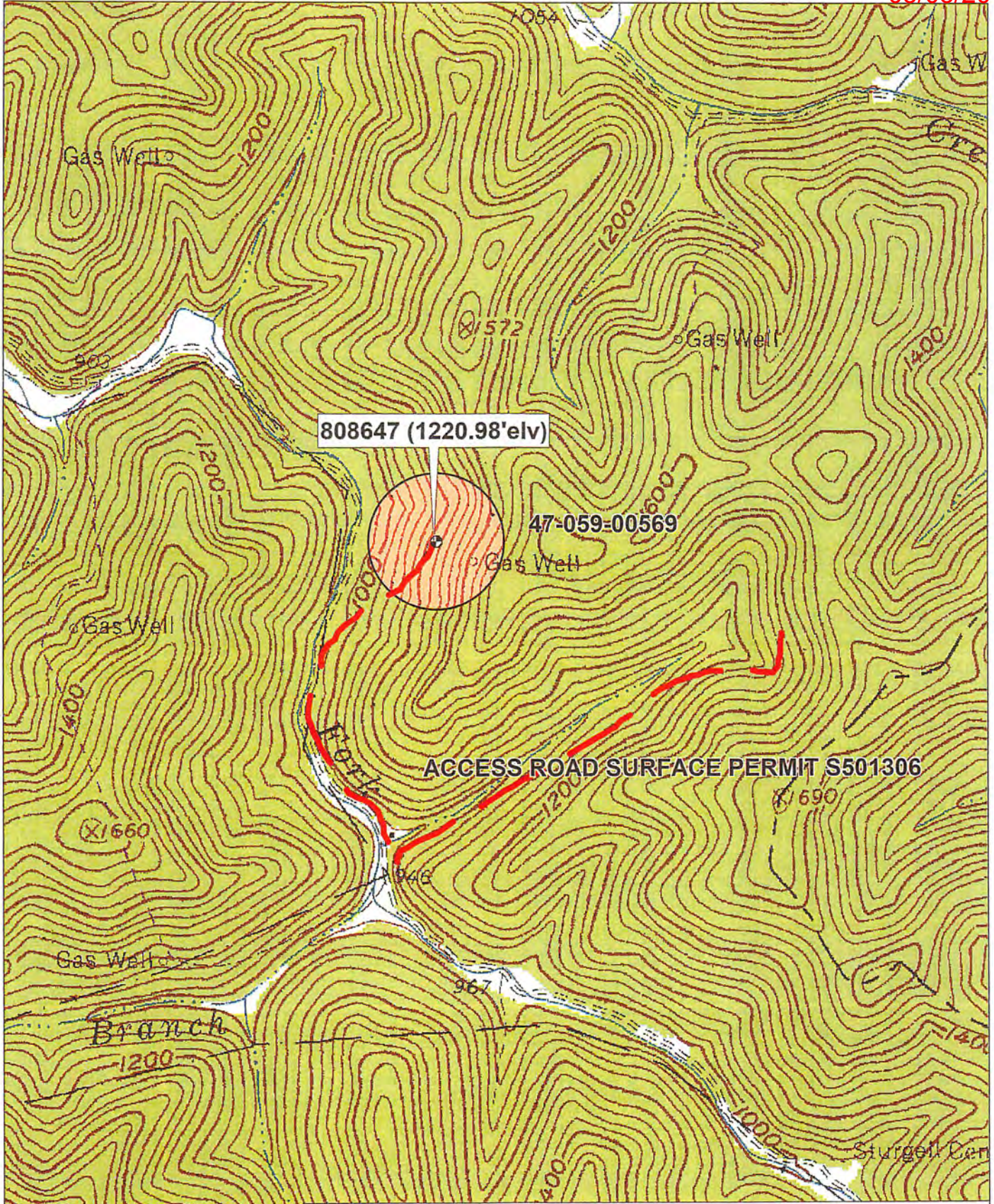
- Letter size copy of the topography map showing the well location.**

I the undersigned, hereby certify this data is correct to the best of my knowledge and belief and shows all the information required by law and the regulations issued and prescribed by the Office of Oil and Gas.

[Signature]
Signature

EHS Specialist
Title

2/27/19
Date



WELL 808647 P&A TOPO MAP

Data use subject to license.
 © DeLorme. XMap® 8.
 www.delorme.com

