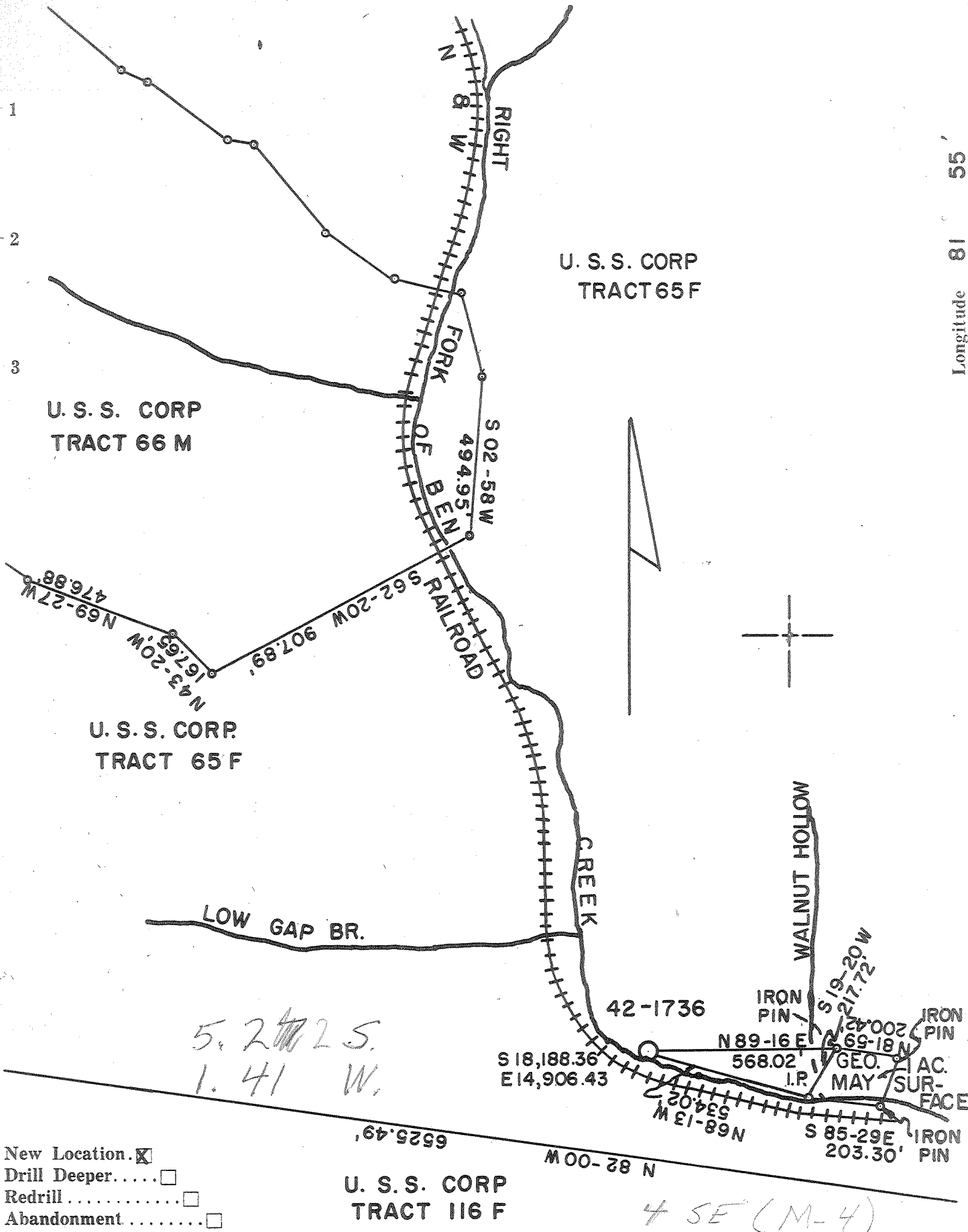


Latitude 37 40

Longitude 81 55



- New Location.
- Drill Deeper. ....
- Redrill. ....
- Abandonment. ....

U. S. S. CORP TRACT 116 F

Company	CARNEGIE NATURAL GAS
Address	1015 FRICK BLDG. PITTSBURGH 19 PA
Farm	UNITED STATES STEEL CORP.
Tract	65 F
Acres	696.06
Lease No.	17459
Well (Farm) No.	42
Serial No.	1736
Elevation (Spirit Level)	1050.74'
Quadrangle	GILBERT - WC
County	MINGO
District	STAFFORD
Engineer	<i>John A. Burk</i>
Engineer's Registration No.	1850
File No.	
Drawing No.	
Date	MARCH 17, 1960
Scale	1" = 400'

STATE OF WEST VIRGINIA  
 DEPARTMENT OF MINES  
 OIL AND GAS DIVISION  
 CHARLESTON

WELL LOCATION MAP  
 FILE NO. MIN-666

+ Denotes location of well on United States Topographic Maps, scale 1 to 62,500, latitude and longitude lines being represented by border lines as shown.  
 — Denotes one inch spaces on border line of original tracing.

*abd, July 1961*

*Deep Well*



STATE OF WEST VIRGINIA  
DEPARTMENT OF MINES  
OIL AND GAS DIVISION /6

Quadrangle Gilbert

Permit No. MIN-666

**WELL RECORD**

Oil or Gas Well GAS  
(KIND)

Company Carnegie Natural Gas Company  
Address 1015 Frick Bldg., Pittsburgh, Pa.  
Farm United States Steel Corp. Tract No. 65F Acres 696.06  
Location (waters) \_\_\_\_\_  
Well No. 42-1736 Elev. 1050.74'  
District Stafford County Mingo  
The surface of tract is owned in fee by U. S. Steel Corp.  
525 Wm. Penn Place Address Pittsburgh, Pa.  
Mineral rights are owned by U. S. Steel Corp.  
525 Wm. Penn Place Address Pittsburgh, Pa.  
Drilling commenced April 9, 1960  
Drilling completed July 12, 1960  
Date Shot \_\_\_\_\_ From \_\_\_\_\_ To \_\_\_\_\_  
With \_\_\_\_\_  
Open Flow \_\_\_\_\_ /10ths Water in \_\_\_\_\_ Inch  
\_\_\_\_\_ /10ths Merc. in \_\_\_\_\_ Inch  
Volume 21,000 Cu. Ft.  
Rock Pressure 260 lbs. 120 hrs.  
Oil \_\_\_\_\_ bbls., 1st 24 hrs.  
WELL ACIDIZED 2,000 gallons' 10% Acid  
WELL FRACTURED 400 bbl. water, 14,000# sand

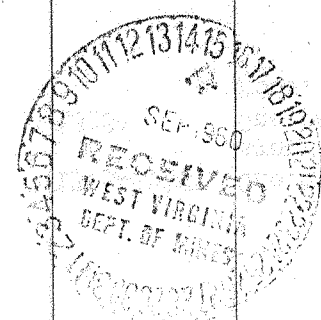
Casing and Tubing	Used in Drilling	Left in Well	Packers
Size			
16			Kind of Packer _____
13 1/4"	29'	29'	Bottom Hole
10 3/4"	292'	292'	Size of 7"x8-5/8"
8 5/8"	1661'	1661'	
6 3/8 7"	2450'	2450'	Depth set <u>2450'</u>
5 3/16			
3			Perf. top _____
2			Perf. bottom _____
Liners Used			Perf. top _____
			Perf. bottom _____

CASING CEMENTED \_\_\_\_\_ SIZE \_\_\_\_\_ No. Ft. \_\_\_\_\_ Date \_\_\_\_\_

COAL WAS ENCOUNTERED AT \_\_\_\_\_ FEET \_\_\_\_\_ INCHES  
\_\_\_\_\_ FEET \_\_\_\_\_ INCHES \_\_\_\_\_ FEET \_\_\_\_\_ INCHES  
\_\_\_\_\_ FEET \_\_\_\_\_ INCHES \_\_\_\_\_ FEET \_\_\_\_\_ INCHES

RESULT AFTER TREATMENT 94,000 cu.ft.  
ROCK PRESSURE AFTER TREATMENT 150# - one hour.  
Fresh Water 30 Feet Salt Water 1793-1800', 1828' Feet

Formation	Color	Hard or Soft	Top	Bottom	Oil, Gas or Water	Depth	Remarks
Gravel			0	21			
Slate			21	66	Water	30'	Hole full.
Sand			66	106			
Slate			106	115			
Sand			115	157			
Slate			157	163			
Sand			163	181			
Slate			181	210			
Sand			210	265			
Slate			265	300			
Sand			300	565	Gas	369'	60,000 cu.ft. Blew out.
Lime			565	575			
Sand			575	620			
Lime			620	640			
Slate			640	649			
Sand			649	686			
Slate and Shells			686	710			
Sand			710	924 -			
Lime			924	944			
Sand			944	1095 -			
Lime (broken)			1095	1130			
Sand			1130	1375 -			
Lime			1375	1386			
Red Rock			1386	1412			
Lime (gritty)			1412	1454			
Red Rock			1454	1470			
Lime (gritty)			1470	1507			
Slate			1507	1512			
Lime			1512	1537			
Lime (gritty)			1537	1606			



(over)

Formation	Color	Hard or Soft	Top <sup>1/8</sup>	Bottom	Oil, Gas or Water	Depth Found	Remarks
Slate and Shells			1606	1644			
Red Rock			1644	1659			
Lime (gritty)			1659	1680			
Slate			1680	1701			
Lime			1701	1754			
Sand			1754	1767			
Lime (gritty)			1767	1770			
Sand	311		1770	1790			
Lime			1790	1814	S. Water	1793-1800'	One 8" bailer every 3 hours.
Sand			1814	1839			
Red Rock			1839	1900	S. Water	1828'	One bailer per hour.
Lime (broken)			1900	1981			
Sand			1981	1994			
Slate			1994	2023			
Lime			2023	2051			
Maxton Sand			2051	2126			
Lime			2126	2234			
Sand			2234	2321			
Big Lime			2321	2687	Gas	2666-70'	Show.
Red Injun			2687	2788			
Slate and Shells			2788	2800			
Lime (gritty)			2800	2962	Gas (weir)	2832-44'	21,000 cu.ft.
Slate			2962	3055			
Slate and Shells			3055	3245			
Shale			3245	3280			
Sand			3280	3303			
Slate			3303	4270			
Brown Shale			4270	4645	Gas	4348'	Show.
Slate and Shells			4645	5000			
Brown Shale			5000	5226			
Black Shale			5226	5234			
Lime			5234	5308			
Sand			5308	5319			
Lime			5319				
Total Depth			445	5359			

5208      5308  
1051      1051  
4155      4257

Date September 13, 19 60

APPROVED CARNEGIE NATURAL GAS COMPANY, Owner

By \_\_\_\_\_ (Title) Land Agent