

LATITUDE 37° 52' 30"

LONGITUDE 87° 22' 30"



7.5 OGIS topo location

7.5' loc 2.665 15' loc \_\_\_\_\_  
                  0.21 W (calc.) \_\_\_\_\_

Company \_\_\_\_\_

Farm \_\_\_\_\_

Quad KERMIT 7 1/2'

County MINEO

District KERMIT

WELL LOCATION MAP

File No. 059-0902

#547

Map 83

Lease No. 2769-333A

Map Square 20-23

# UNITED FUEL GAS COMPANY

INCORPORATED

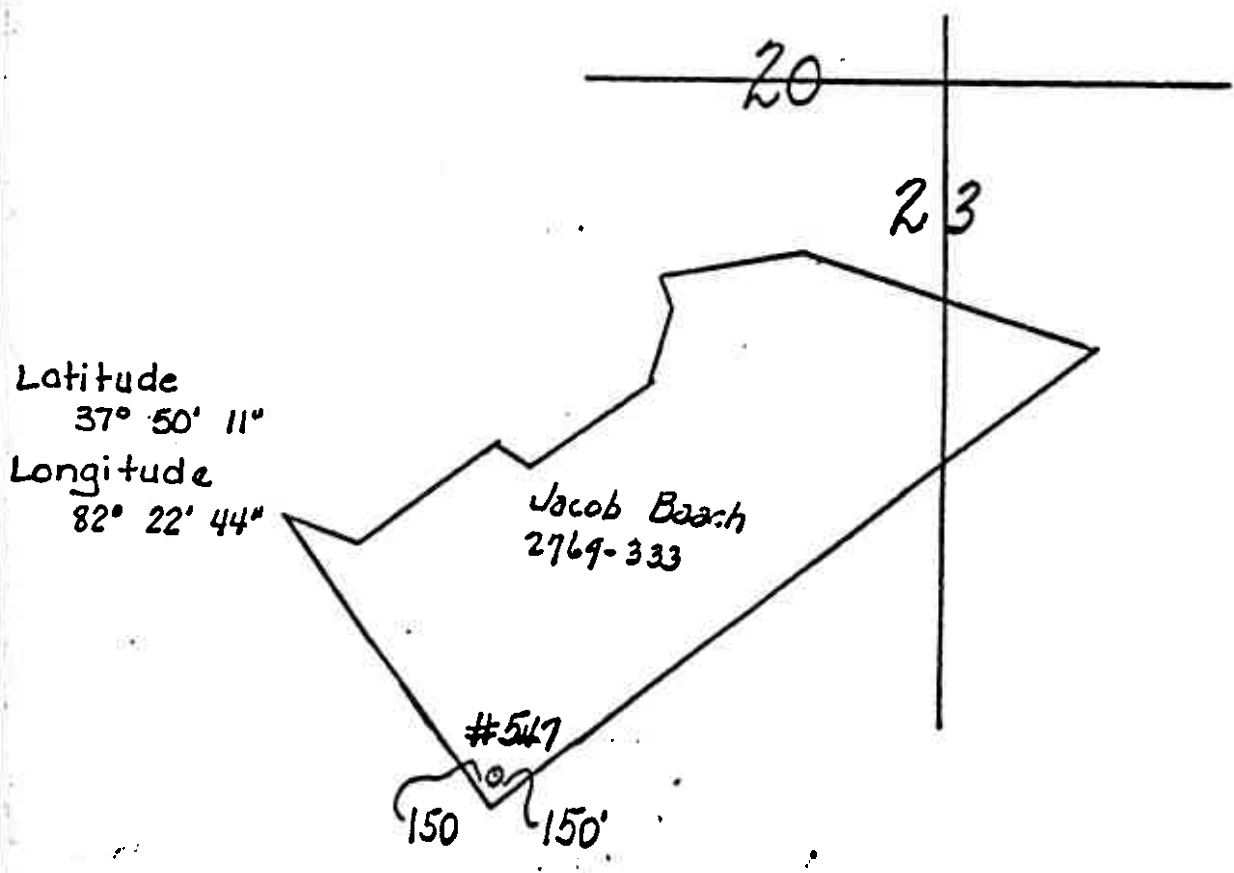
WELL LOCATION Triple State FIELD

Well No. 547, Jacob Beach Farm; 333 Acres. On Upper & Lower Curving Cr  
Warfield Dist. Mingo Co. W. Va State

Scale 1" = 80 Rods

Location Made by A. Colburn Date June 12, 1913

Elevation .....



MIN-902

June 16 1913 A. Colburn Engineer

**UNITED FUEL GAS COMPANY**  
INCORPORATED

059-0902

SERIAL WELL NO. 547 LEASE NO 2769

Map Sq. 20-23

RECORD of Well No. <u>1</u> on the <b>Jacob Beach</b> Farm of <u>333</u> Acres in <b>Warfield</b> District <b>Mingo</b> County <b>Triple State</b> Field, State of <b>W.Va.</b>		<b>CASING AND CONDUCTOR</b> SIZE USED IN DRILLING LEFT IN WELL Conductor <u>15"x16"</u> <u>15"x16"</u> 1 1/2" <u>633'-4</u> <u>633'-4</u> 1" <u>1376'-3</u> <u>1376'-3</u> 7/8" <u>1736'-4</u> <u>68'-4</u> 3/4" <u>1844'-11</u> <u>844'-11</u> 1/2" <u>2117</u> <u>2117</u> 2		<b>GAS WELL</b> <b>OPEN FLOW</b> in <u>2"</u> inch tubing At Centre At 1-7 Diam. Pounds Ounces Pounds Ounces <u>2 1/2/10" Mercury</u> UNPLUGGED IN 2" tubing casing 1 Min. <u>90</u> Pounds 2 Min. <u>100</u> Pounds 3 Min. <u>240</u> Pounds 4 Min. <u>280</u> Pounds 5 Min. <u>300</u> Pounds Hook Pressure <u>405</u> Pounds	
Rig Commenced <u>July 25th.</u> <u>1913</u> Rig Completed <u>Aug. 13th.</u> <u>1913</u> Drilling Commenced <u>Sept. 18th. 1914.</u> <u>1914</u> Drilling Completed <u>Jan. 3rd.</u> <u>1914</u> Drilling to cost <u>1.30</u> per foot Contractor is: <u>Munce Drilling Co.,</u> Address: <u>Charleston, W.Va.</u> Drillers' Names <u>J. A. Todd</u> <u>C. E. Swiger</u>		Shot <u>19</u> Size of Torpedo Size of Tubing <u>2</u> inch Size of Packer <u>2x5-3/16x10"</u> Kind of Packer <u>Hook Wall</u> Set <u>232'</u> ft. from Bottom		<b>OIL WELL</b> Size of Hole Kind of Hole Well abandoned and plugged	
<b>1st DAY'S PRODUCTION</b> Gas calculated to be <u>786720</u> cubic feet Oil flowed <u>barrels, pumped</u> barrels		Kind of Packer <u>Hook Wall</u> Set <u>232'</u> ft. from Bottom		Well abandoned and plugged	

**DRILLERS RECORD** Elevation 1216'

FORMATION	TOP	BOTTOM	THICKNESS	REMARKS	DAYS
Conductor	0	16	16	Used 16' x 16' Conductor	
Sand	16	125	109		
Slate	125	140	15		
Sand	140	220	80		
Coal	300	303	3		
Slate	303	320	17		
Sand	320	385	65		
Slate	385	395	10		
Lime Shells	395	427	32		
Coal	583	586	3		
Slate	586	630	44	10" casing set at 627'	
Sand	630	675	45		

MIN-902

0000 0046

Sand	700	775	75	
Slate	775	810	35	
Big Dunkard	810	880	70	
Slate	910	1000	90	
Salt Sand	1060	1260	220	Hole full of Water at 1220'
Black Lime	1280	1371	91	8 1/2" Casing set at 1371'
Lime Shells	1371	1400	29	
Black Slate	1400	1625	225	
Maxon	1625	1650	25	Gas in Maxon at 1625'
Slate & Shells	1650	1700	50	
Little Lime	1700	1727	27	Gas in Big Lime at 1695'
Big Lime	1727	1917	190	6-5/8" Set at 1736'
Big Injun	1933	1996	63	Show of gas at 1973'
Slate & Shells	1996	2057	61	6-3/16" Casing set at 1932'
Squaw	2057	2062	5	Gas at 2057'
Slate	2062	2107	45	
Total Depth		2107		

Used 2117'-5" of 2" Tubing which includes 2 - 6' perforations  
 1st. perforation set 20' from bottom, 2nd. perforation set 60'  
 from bottom, tubing packer set at 1675'.

Used Bottom Hole Packers on the three string of Casing.  
 Coal cemented from 548' to 627' using 10 1/2 bbls. cement and  
 31 bbls. sand.

*J. L. M. Leventy*

#547  
51

MIN-902

0000 0047