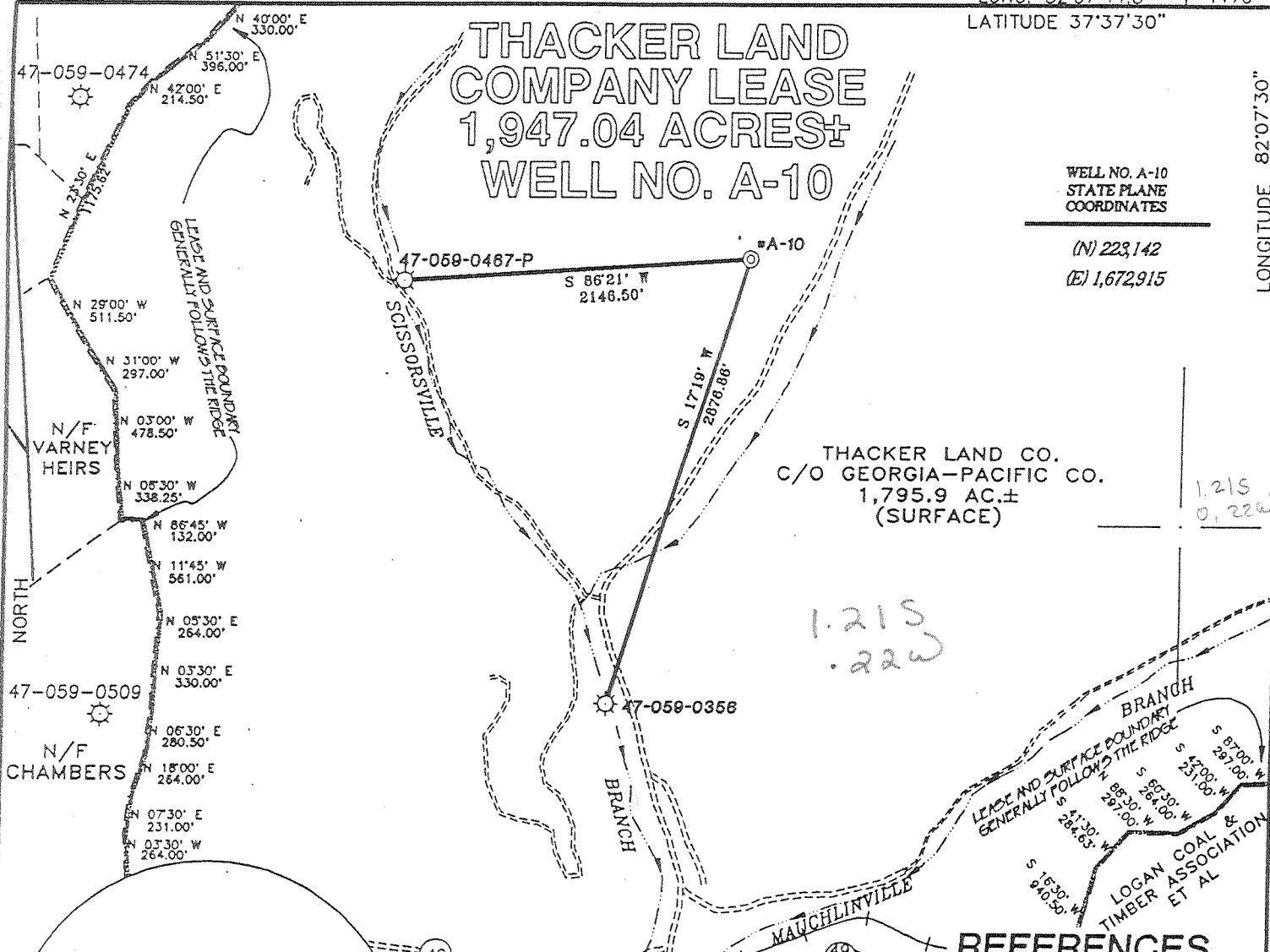


# THACKER LAND COMPANY LEASE 1,947.04 ACRES± WELL NO. A-10

WELL NO. A-10  
STATE PLANE  
COORDINATES

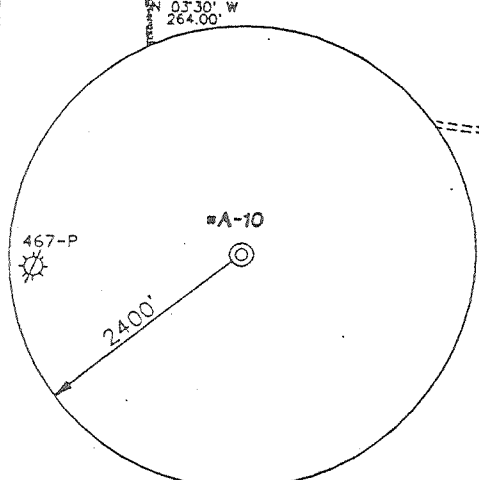
(N) 223,142  
(E) 1,672,915



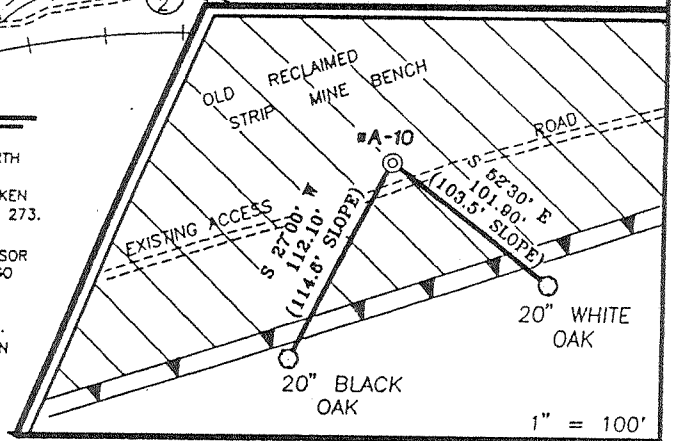
THACKER LAND CO.  
C/O GEORGIA-PACIFIC CO.  
1,795.9 AC.±  
(SURFACE)

1.215  
.22w

1.215  
0.22w



### REFERENCES

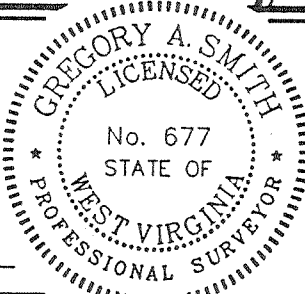


- NOTES ON SURVEY**
1. TIES TO WELLS AND CORNERS ARE BASED ON STATE PLANE GRID NORTH WY SOUTH ZONE NAD '27.
  2. LEASE BOUNDARY SHOWN HEREON TAKEN FROM MINGO COUNTY DEED BOOK 1 PAGE 273.
  3. SURFACE OWNERS AND ADJOINER INFORMATION OBTAINED FROM THE ASSESSOR AND COUNTY CLERK RECORDS OF MINGO COUNTY IN FEBRUARY 1998.
  4. WELL LAT./LONG. ESTABLISHED BY DGPS (SUBMETER MAPPING GRADE).
  5. TIES TO REFERENCES ARE BASED ON MAGNETIC NORTH 9-30-98.



I THE UNDERSIGNED, HEREBY CERTIFY THAT THIS PLAT IS CORRECT TO THE BEST OF MY KNOWLEDGE AND BELIEF AND SHOWS ALL THE INFORMATION REQUIRED BY LAW AND THE REGULATIONS ISSUED AND PRESCRIBED BY THE DEPARTMENT OF ENERGY.


P.S. 677 *Gregory A. Smith*



(+) DENOTES LOCATION OF WELL ON UNITED STATES TOPOGRAPHIC MAPS.  
 DATE OCTOBER 13, 19 98  
 OPERATORS WELL NO. #A-10  
 API WELL NO. 47-059-01294  
 STATE COUNTY PERMIT

MINIMUM DEGREE OF ACCURACY 1 / 2500 FILE NO. 3914PA10 (67-66)  
 PROVEN SOURCE OF ELEVATION SPOT ELEVATION AT API#47-059-0272 = 1099'  
 SCALE 1" = 1000'

STATE OF WEST VIRGINIA  
 DIVISION OF ENVIRONMENTAL PROTECTION  
 OFFICE OF OIL AND GAS



WELL TYPE : OIL  GAS  LIQUID INJECTION  WASTE DISPOSAL  IF "GAS" PRODUCTION  STORAGE  DEEP  SHALLOW

LOCATION :  
 ELEVATION 1260' WATERSHED TRIBUTARY OF SCISSORVILLE BRANCH  
 DISTRICT MAGNOLIA COUNTY MINGO QUADRANGLE MATEWAN 7.5'

SURFACE OWNER THACKER LAND CO. C/O GEORGIA-PACIFIC CO. ACREAGE 1795.9  
 ROYALTY OWNER THACKER LAND CO. C/O GEORGIA-PACIFIC CO. LEASE ACREAGE 1947.04

PROPOSED WORK :  
 DRILL  CONVERT  DRILL DEEPER  REDRILL  FRACTURE OR STIMULATE  PLUG OFF OLD FORMATION  PERFORATE NEW FORMATION  PLUG AND ABANDON  CLEAN OUT AND REPLUG  OTHER

PHYSICAL CHANGE IN WELL (SPECIFY) \_\_\_\_\_ TARGET FORMATION DEVONIAN SHALE  
 ESTIMATED DEPTH 5200'

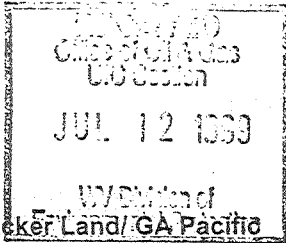
WELL OPERATOR BLAZER ENERGY CORPORATION DESIGNATED AGENT ROBERT ALLEY  
 ADDRESS P.O. BOX 2347 CHARLESTON, WV 25328 ADDRESS P.O. BOX 2347 CHARLESTON, WV 25328

MINGO COUNTY NAME PERMIT 12911

DEEP WELL

WR-35

2-Dec-98  
API # 47-59-01294



State of West Virginia  
Division of Environmental Protection  
Section of Oil and Gas

Reviewed AS

Well Operator's Report of Well Work

Farm Name: Thacker Land/GA Pacific

Operator Well No.: Thacker A-10

LOCATION: Elevation: 1,260.00      Quadrangle: Matewan  
District: Magnolia      County: Mingo  
Latitude: 6400 Feet South of 37      Deg. 37Min. 30 Sec.  
Longitude: 1170 Feet West of 82      Deg. 7 Min. 30 Sec

Company: BLAZER ENERGY CORPORATION  
P.O. BOX 2347  
CHARLESTON, WV 25328

Casing & Tubing Size	Used in Drilling	Left in Well	Cement Fill Up Cu. Ft.
13 3/8"	37'	37'	Grtd
9 5/8"	895'	895'	366 Ft³
7"	2530'	2530'	442 Ft³
4 1/2"	5053'	5053'	446 Ft³
2 3/8"		4917'	

Agent: Richard Smiltzer

Inspector: Ofie Helmick  
Permit Issued: 12/2/98  
Well work commenced: 1/15/99  
Well work completed: 3/12/99

Verbal Plugging  
Permission granted on:  
Rotary Rig X Cable Rig \_\_\_\_\_  
Total Depth 5075 feet  
Fresh water depths (ft) 30,78  
Salt water depths (ft) 1480, 1680

Is coal being mined in area? \_\_\_\_\_  
Coal Depths (ft): 192, 552

OPEN FLOW DATA

Producing formation L. Shale, U. Shale, Berea, Big Injun, Weir, Big Lime Pay Zone Depth (ft): See Attach  
Gas: Initial open flow 496 MCF/d Oil: Initial open flow \_\_\_\_\_ Bbl/d  
Final open flow: 764 MCF/d Final open flow: \_\_\_\_\_  
Time of open flow between initial and final tests \_\_\_\_\_ Hours  
Static rock pressure 45 psig (surface pressure) after \_\_\_\_\_ Hours  
Second producing formation \_\_\_\_\_ Pay Zone Depth (ft): \_\_\_\_\_  
Gas: Initial open flow \_\_\_\_\_ MCF/d Oil: Initial open flow \_\_\_\_\_ Bbl/d  
Final open flow: \_\_\_\_\_ MCF/d Final open flow: \_\_\_\_\_  
Time of open flow between initial and final tests \_\_\_\_\_ Hours  
Static rock pressure \_\_\_\_\_ psig (surface pressure) after \_\_\_\_\_ Hours

NOTE: ON BACK OF THIS FORM PUT THE FOLLOWING: 1) DETAILS OF PERFORATED INTERVALS, FRACTURING OR STIMULATING, PHYSICAL CHANGE, ETC. 2) THE WELL LOG WHICH IS A SYSTEMATIC DETAILED GEOLOGICAL RECORD OF ALL FORMATIONS, INCLUDING COAL ENCOUNTERED BY THE WELLBOF

For: BLAZER ENERGY CORPORATION

By: Richard Smiltzer / Admin  
Date: 7/19/99

JUL 19 1999

MINGO 1294

**EASTERN STATES OIL & GAS, INC.**  
**WR-35 COMPLETION REPORT - Attachment**  
**Well Treatment Summary**

Well: Thacker A-10

API# 47-59-01294

Date	2-10-99	2-10-99	2-10-99	2-10-99		
Type Frac Acid, N <sub>2</sub> , Foam, Water	N <sup>2</sup>	N <sup>2</sup>	N <sup>2</sup>	Acid, N <sup>2</sup>		
Zone Treated	L. Shale	U. Shale, Berea	Big Injun, Weir	Big Lime		
# Perfs From - To:	20 4798-5004	54 3360-4543	18 2705-2980	28 2626-2682	JUL 12 1999 WVEN 201 Eastern States Oil & Gas	
BD Pressure @ psi	2977	2674	2411	1150		
ATP psi	3514	2109	3211	1653		
Avg. Rate, B=B/M, S= SCF/M	48,000 S	48,000 S	44,000 S	5 B		
Max. Treat Press psi	3914	2266	3992	1874		
ISIP psi	2170	1270	1700	1337		
Frac Gradient	.52	.37	.66	.46		
10 min S-I Pressure	1611	1201	(5 min) 1093	(5 min) 1015		
Material Volume						
Sand-sks						
Water-bbl						
SCF N <sub>2</sub>	520,000	1,045,000	402,000	46,811		
Acid-gal	200 gal 7½%	800 gal 7½%	250 gal 15%	2250 gal 15%		
NOTES:						

**Formation Record**

TOP	BOTTOM	FORMATION	Remarks
0	45	Conductor	½" stream of water at 30'
45	192	Sand	Soap hole at 78' (½" stream of water)
192	196	Coal	
196	450	Sand	
450	512	Sandy-shale	
512	530	Sand	
530	552	Sandy-shale	
552	555	Coal	
555	890	Sandy-shale	
890	925	Sand	
925	950	Sandy-shale	
940	1669	Salt Sand	½" stream of water at 1480' (soap hole), 1" stream of water at 1680'
2170	2269	Upper Maxton	
2356	2373	Lower Maxton	GT 2368' - No show
2406	2468	Little Lime	
2468	2677	Big Lime	GT 2560', 2638' - No show, GT 2701' - 82 mcf
2800	2994	Weir	GT 2825' - 901 mcf, GT 2949 - 901 mcf
3313	3054	Sunbury	
3054	3403	Berea	
3403	4283	Upper Huron	GT 3448' - 637 mcf, GT 3726' - 637 mcf
4283	4543	Lower Huron	GT 4409' - 901 mcf
4543	4666	Java	
4666	4853	Angola	
4853	5065	Rhinstreet	GT 4904' - 637 mcf
5065		Onondaga	
5075		TD (Driller)	GT at Drill Collars - 505 mcf