

Well Coordinates are based on the West Virginia State Plane Coordinate System NAD '27/NGVD '29 as Calculated From Either NGS/USGS Published control Point or by NGS/NOAA Opus Static Solution. Closed Loop Traverse & Trigonometric Leveling Were Used To Determine Actual Staked Location. Scale Factor/Combined Factor Was Not Applied. Corpcson Was Used To Convert NAD '88 NAVD '88 To NAD '27 NGVD '29.

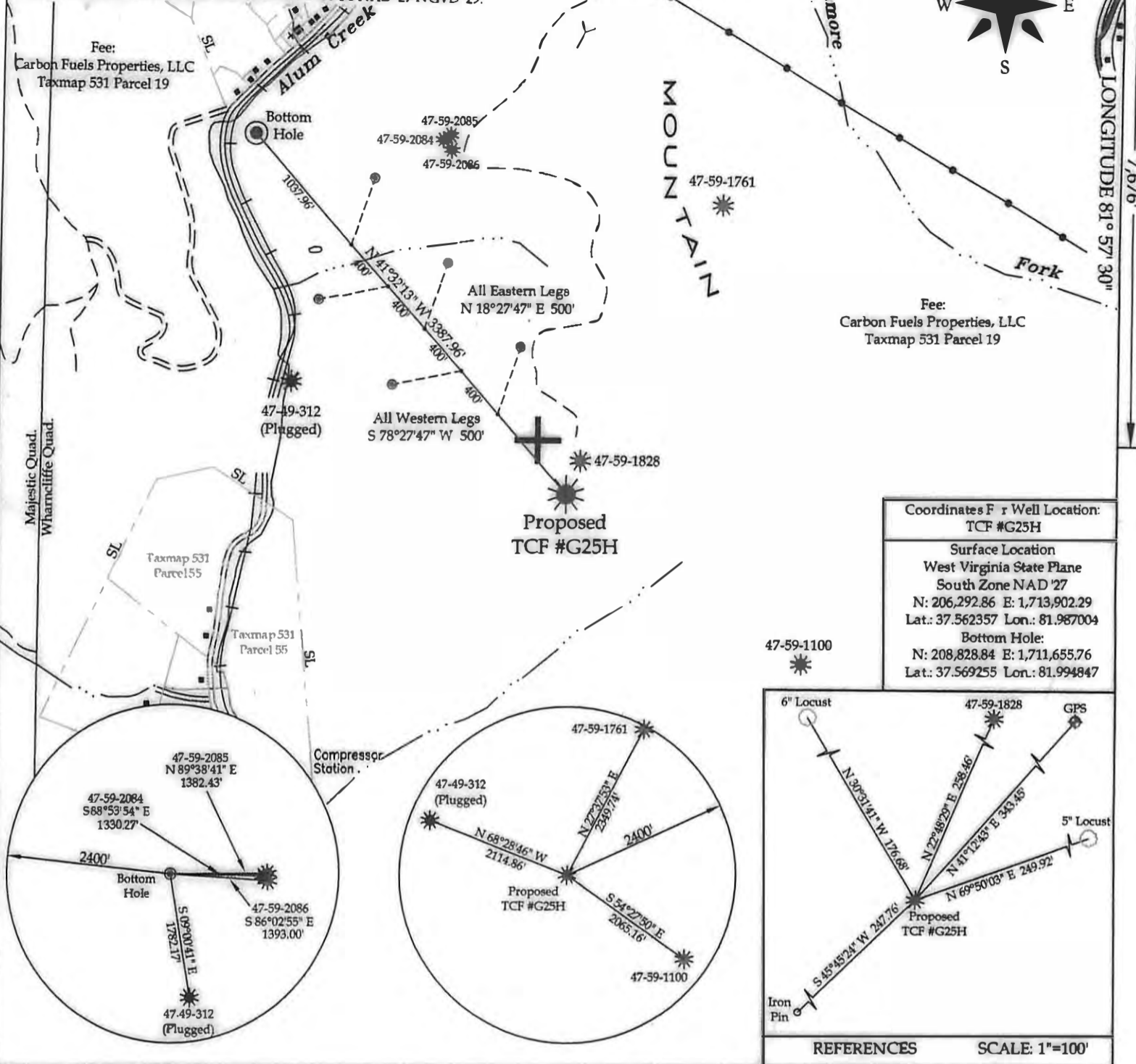
LATITUDE 37° 35' 00"

LONGITUDE 81° 57' 30"

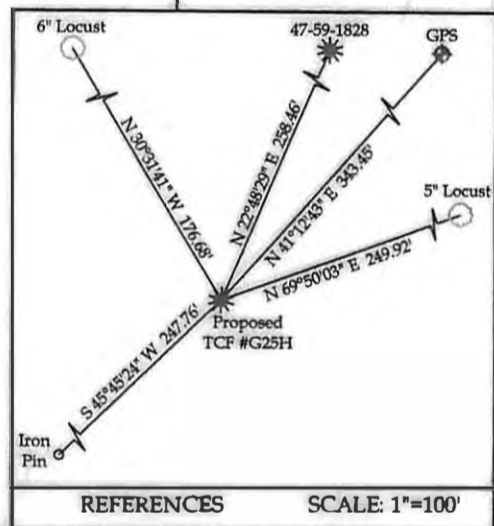
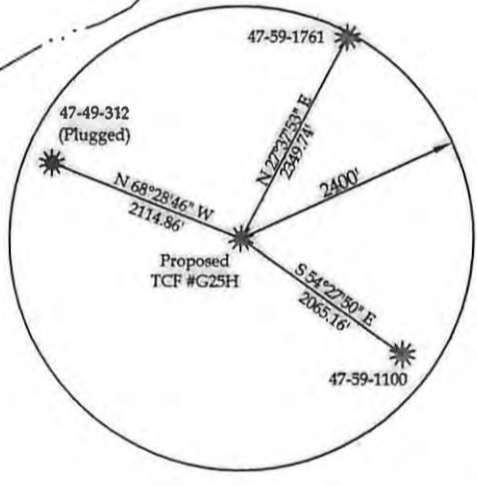
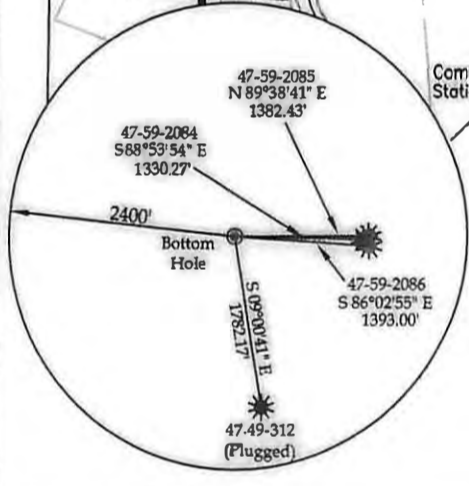


Fee:  
Carbon Fuels Properties, LLC  
Taxmap 531 Parcel 19

Fee:  
Carbon Fuels Properties, LLC  
Taxmap 531 Parcel 19



Coordinates For Well Location: TCF #G25H
Surface Location West Virginia State Plane South Zone NAD '27 N: 206,292.86 E: 1,713,902.29 Lat.: 37.562357 Lon.: 81.987004
Bottom Hole: N: 208,828.84 E: 1,711,655.76 Lat.: 37.569255 Lon.: 81.994847



I THE UNDERSIGNED, HEREBY CERTIFY THAT THIS PLAT IS CORRECT TO THE BEST OF MY KNOWLEDGE AND BELIEF AND SHOWS ALL THE INFORMATION REQUIRED BY LAW AND THE REGULATIONS ISSUED AND PRESCRIBED BY THE DIVISION OF ENVIRONMENTAL PROTECTION.



(H) DENOTES LOCATION OF WELL ON UNITED STATES TOPO MAPS  
DATE January 19, 20 09  
OPERATOR'S WELL NO. TCF #G25H  
API WELL No. 47 - 059 - 021394  
STATE COUNTY PERMIT  
**CANCELLED**

MINIMUM DEGREE OF ACCURACY	FILE NO.	6011-09
1:56,000	SCALE:	1" = 1000'
PROVEN SOURCE OF ELEVATION	DRAWING NO.	TCF-25H-plat.dwg
TRIG. LEVELING FROM KNOWN GPS ELEVATION		

STATE OF WEST VIRGINIA  
DIVISION OF ENVIRONMENTAL PROTECTION  
OFFICE OF OIL AND GAS



WELL TYPE: OIL  GAS  LIQUID INJECTION  WASTE DISPOSAL   
(IF "GAS") PRODUCTION  STORAGE  DEEP  SHALLOW   
LOCATION: ELEVATION 1615.74 WATER SHED Alum Creek  
DISTRICT Stafford COUNTY Mingo  
QUADRANGLE Wharncliffe  
SURFACE OWNER Carbon Fuels Properties, LLC ACREAGE 3963.5  
OIL & GAS ROYALTY OWNER Carbon Fuels Properties, LLC LEASE ACREAGE 7411  
LEASE NO. CFP-001  
PROPOSED WORK: DRILL  CONVERT  DRILL DEEPER  REDRILL  FRACTURE OR STIMULATE  PLUG OFF OLD FORMATION  PERFORATE NEW FORMATION  OTHER PHYSICAL CHANGE IN WELL (SPECIFY) \_\_\_\_\_  
PLUG AND ABANDON  CLEAN OUT AND REPLUG   
TARGET FORMATION Lower Huron Shale ESTIMATED DEPTH MD (Main) = 7981' TVD = 4915' MD (Sidetracks) = 2500'  
WELL OPERATOR TRIANA ENERGY, L.L.C. DESIGNATED AGENT Ray Prudnick, Jr.  
ADDRESS 900 Virginia Street East, Suite 400 ADDRESS: 900 Virginia Street East, Suite 400  
Charleston, WV 25301 Charleston, WV 25301

07-28-2013