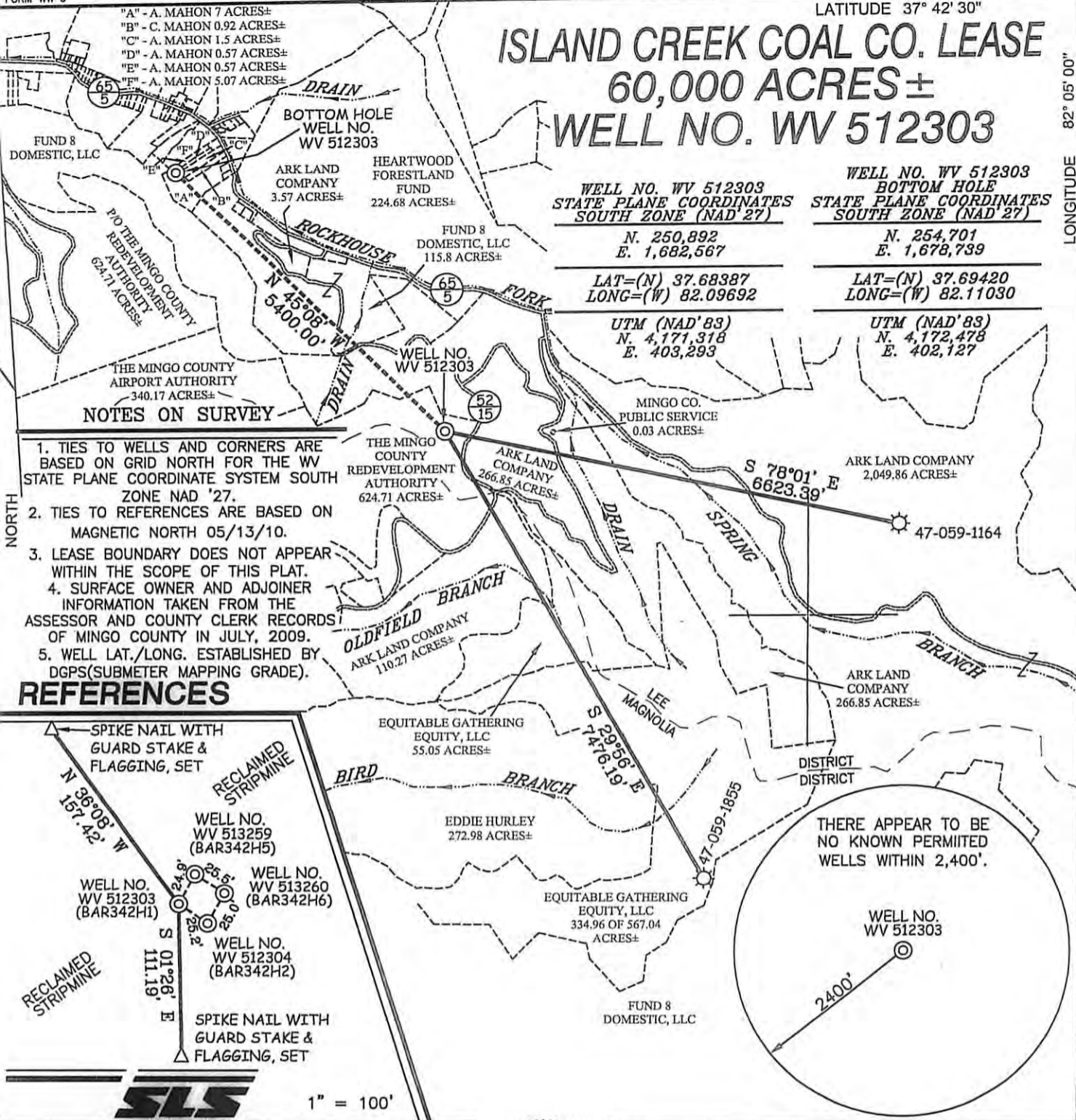


# ISLAND CREEK COAL CO. LEASE 60,000 ACRES ± WELL NO. WV 512303

- "A" - A. MAHON 7 ACRES±
- "B" - C. MAHON 0.92 ACRES±
- "C" - A. MAHON 1.5 ACRES±
- "D" - A. MAHON 0.57 ACRES±
- "E" - A. MAHON 0.57 ACRES±
- "F" - A. MAHON 5.07 ACRES±



WELL NO. WV 512303  
STATE PLANE COORDINATES  
SOUTH ZONE (NAD'27)

N. 250,892  
E. 1,682,567

LAT=(N) 37.68387  
LONG=(W) 82.09692

UTM (NAD'83)  
N. 4,171,318  
E. 403,293

WELL NO. WV 512303  
BOTTOM HOLE  
STATE PLANE COORDINATES  
SOUTH ZONE (NAD'27)

N. 254,701  
E. 1,678,739

LAT=(N) 37.69420  
LONG=(W) 82.11030

UTM (NAD'83)  
N. 4,172,478  
E. 402,127

- ### NOTES ON SURVEY
1. TIES TO WELLS AND CORNERS ARE BASED ON GRID NORTH FOR THE WV STATE PLANE COORDINATE SYSTEM SOUTH ZONE NAD '27.
  2. TIES TO REFERENCES ARE BASED ON MAGNETIC NORTH 05/13/10.
  3. LEASE BOUNDARY DOES NOT APPEAR WITHIN THE SCOPE OF THIS PLAT.
  4. SURFACE OWNER AND ADJOINER INFORMATION TAKEN FROM THE ASSESSOR AND COUNTY CLERK RECORDS OF MINGO COUNTY IN JULY, 2009.
  5. WELL LAT./LONG. ESTABLISHED BY DGPS(SUBMETER MAPPING GRADE).

### REFERENCES



1" = 100'

I THE UNDERSIGNED, HEREBY CERTIFY THAT THIS PLAT IS CORRECT TO THE BEST OF MY KNOWLEDGE AND BELIEF AND SHOWS ALL THE INFORMATION REQUIRED BY LAW AND THE REGULATIONS ISSUED AND PRESCRIBED BY THE DIVISION OF ENVIRONMENTAL PROTECTION.

P.S. *Gregory A. Smith*  
677



(+) DENOTES LOCATION OF WELL ON UNITED STATES TOPOGRAPHIC MAPS.  
DATE AUGUST 18, 20 10  
OPERATORS WELL NO. WV 512303  
API WELL NO. 47-059-02168H  
STATE WEST VIRGINIA COUNTY MINGO PERMIT CANCELLED

MINIMUM DEGREE OF ACCURACY 1 / 2500 FILE NO. 3890P512303 (299-61)  
PROVEN SOURCE OF ELEVATION DGPS (SUBMETER MAPPING GRADE) SCALE 1" = 2,000'

STATE OF WEST VIRGINIA  
DIVISION OF ENVIRONMENTAL PROTECTION  
OFFICE OF OIL AND GAS

WELL TYPE: OIL  GAS  LIQUID INJECTION  WASTE DISPOSAL  IF "GAS" PRODUCTION  STORAGE  DEEP  SHALLOW   
LOCATION: ELEVATION 1,807' WATERSHED SPRING BRANCH OF ROCKHOUSE FORK OF PIGEON CREEK  
DISTRICT LEE COUNTY MINGO QUADRANGLE BARNABUS 7.5'  
SURFACE OWNER MINGO COUNTY REDEVELOPMENT AUTHORITY ACREAGE 624.71± RESIDUE OF 964.88±  
ROYALTY OWNER ISLAND CREEK CORPORATION LEASE ACREAGE 60,000±  
PROPOSED WORK: LEASE NO. 080662  
DRILL  CONVERT  DRILL DEEPER  REDRILL  FRACTURE OR STIMULATE  PLUG OFF OLD FORMATION   
PERFORATE NEW FORMATION  PLUG AND ABANDON  CLEAN OUT AND REPLUG  OTHER   
PHYSICAL CHANGE IN WELL (SPECIFY) \_\_\_\_\_ TARGET FORMATION LOWER HURON  
ESTIMATED DEPTH 5,230' (TOTAL VERTICAL DEPTH)

WELL OPERATOR EQT PRODUCTION COMPANY DESIGNATED AGENT REX C. RAY  
ADDRESS 1710 PENNSYLVANIA AVENUE CHARLESTON, WV 25302 ADDRESS 1710 PENNSYLVANIA AVENUE CHARLESTON, WV 25302