

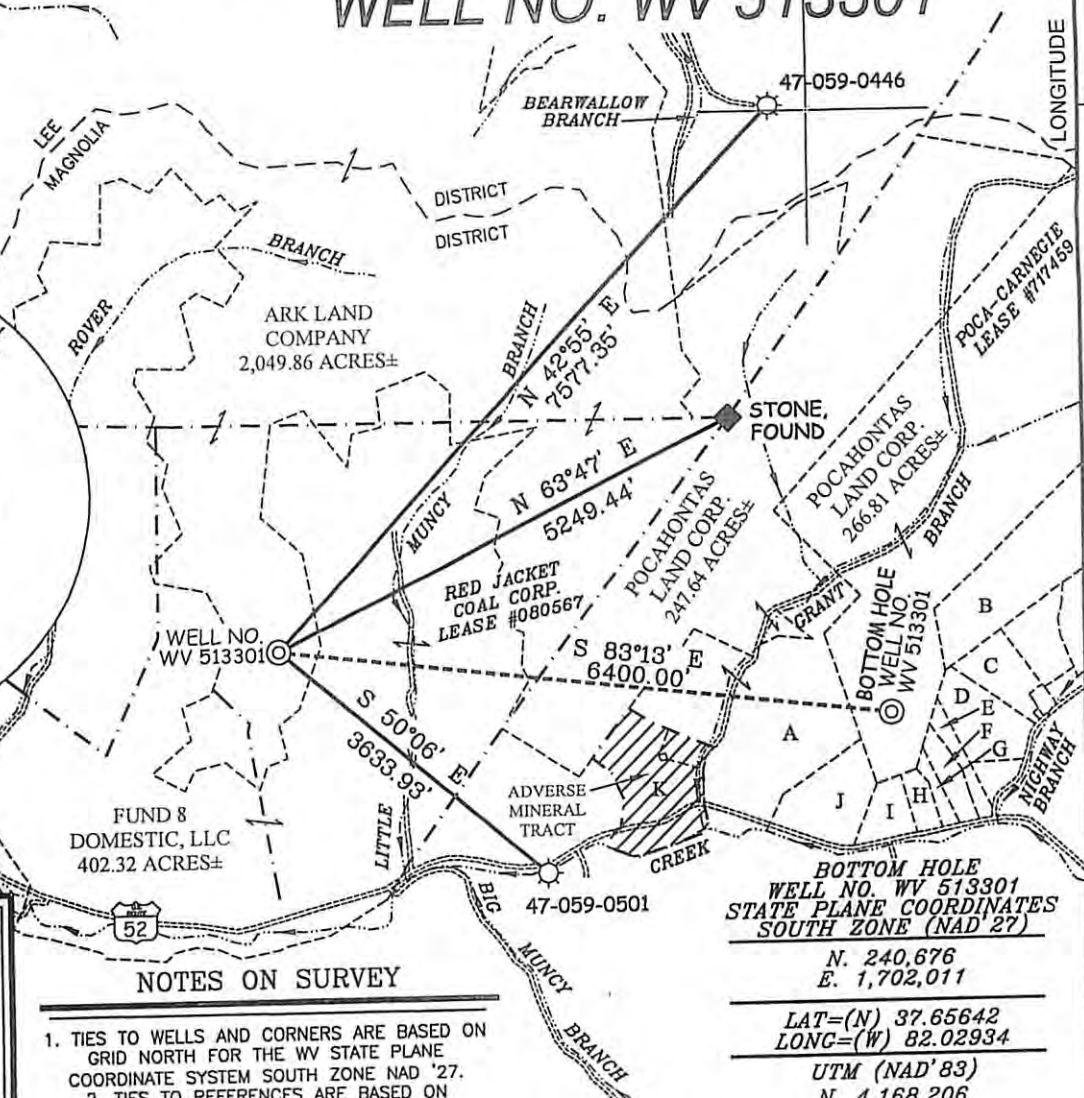
EQT PRODUCTION COMPANY (RED JACKET / POCA-CARNEGIE) WELL NO. WV 513301

WELL NO. WV 513301
STATE PLANE COORDINATES
SOUTH ZONE (NAD 27)

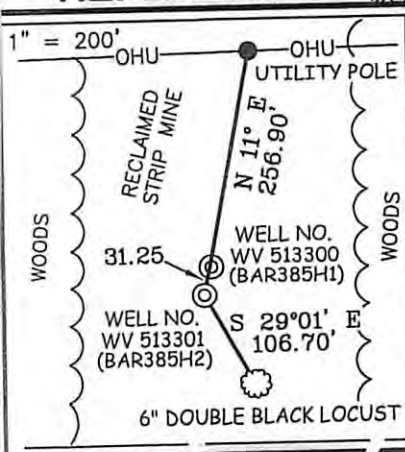
N. 241,432
E. 1,695,656

LAT=(N) 37.65830
LONG=(W) 82.05132

UTM (NAD'83)
N. 4,168,436
E. 407,282



REFERENCES



NOTES ON SURVEY

- TIES TO WELLS AND CORNERS ARE BASED ON GRID NORTH FOR THE WV STATE PLANE COORDINATE SYSTEM SOUTH ZONE NAD '27.
- TIES TO REFERENCES ARE BASED ON MAGNETIC NORTH 08/24/10.
- LEASE BOUNDARY AS SHOWN TAKEN FROM PARTIAL RELEASE OF OIL & GAS LEASE BETWEEN COLUMBIAN FUEL CORP. AND RED JACKET COAL CORP., DATED 10/01/50, A RECENT SURVEY FOR POCAHONTAS LAND CORP. BY AUGUSTA LAND CONSULTANTS DATED JUNE, 1998 & POCAHONTAS LAND CORPORATION MAPPING, SHEET 5.
- SURFACE OWNER AND ADJOINER INFORMATION TAKEN FROM THE ASSESSOR AND COUNTY CLERK RECORDS OF MINGO COUNTY IN JULY, 2010.
- WELL LAT./LONG. ESTABLISHED BY DGPS(SUBMETER MAPPING GRADE).

- A- POCAHONTAS LAND CORP. (5.11 AC.±/72.01 AC.±)
- B- POCAHONTAS LAND CORP. (173.23 AC.±)
- C- D. BRAGG ET UX (6.51 AC.±)
- D- V. GILMAN (11.77 AC.±)
- E- I. GIBSON ET AL (5 AC.±)
- F- R. J. CARTER ET UX (5 AC.±)
- G- J. H. HATFIELD ET UX (2.2 AC.±)
- H- R. COMPTON ET UX (3 AC.±)
- I- K. A. FERRELL (4.75 AC.±)
- J- POCAHONTAS LAND CORP. (23.58 AC.±)
- K- CARDINAL STATES GATHERING CO. (18.24 AC.±)

BOTTOM HOLE
WELL NO. WV 513301
STATE PLANE COORDINATES
SOUTH ZONE (NAD 27)

N. 240,676
E. 1,702,011

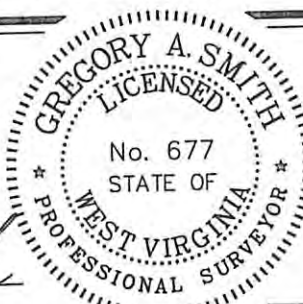
LAT=(N) 37.65642
LONG=(W) 82.02934

UTM (NAD'83)
N. 4,168,206
E. 409,219

I THE UNDERSIGNED, HEREBY CERTIFY THAT THIS PLAT IS CORRECT TO THE BEST OF MY KNOWLEDGE AND BELIEF AND SHOWS ALL THE INFORMATION REQUIRED BY LAW AND THE REGULATIONS ISSUED AND PRESCRIBED BY THE DIVISION OF ENVIRONMENTAL PROTECTION.

P.S. 677

Gregory A. Smith



(+) DENOTES LOCATION OF WELL ON UNITED STATES TOPOGRAPHIC MAPS.

DATE AUGUST 30, 20 10

OPERATORS WELL NO. WV 513301

API WELL NO. 47 - 059 - 02116 H
STATE COUNTY PERMIT

MINIMUM DEGREE OF ACCURACY 1/2500 FILE NO. 3915P513301 (311-50) SCALE 1" = 2,000'

PROVEN SOURCE OF ELEVATION DGPS (SUBMETER MAPPING GRADE)

STATE OF WEST VIRGINIA
DIVISION OF ENVIRONMENTAL PROTECTION
OFFICE OF OIL AND GAS



WELL TYPE: OIL GAS INJECTION WASTE DISPOSAL IF "GAS" PRODUCTION STORAGE DEEP SHALLOW

LOCATION: ELEVATION 2,036' WATERSHED ROVER BRANCH & LITTLE MUNCY BRANCH OF PIGEON CREEK

DISTRICT MAGNOLIA COUNTY MINGO QUADRANGLE BARNABUS 7.5'

SURFACE OWNER ARK LAND COMPANY ACREAGE 2,049.86±

ROYALTY OWNER PLUM CREEK TIMBERLANDS (4,982.72 AC.±) / PENN VIRGINIA OIL & GAS CORPORATION (38,753.36 AC.±) LEASE NO. 080567 / 717459

PROPOSED WORK: DRILL CONVERT DRILL DEEPER REDRILL FRACTURE OR STIMULATE PLUG OFF OLD FORMATION PERFORATE NEW FORMATION PLUG AND ABANDON CLEAN OUT AND REPLUG OTHER

PHYSICAL CHANGE IN WELL (SPECIFY) TARGET FORMATION LOWER HURON ESTIMATED DEPTH 5,700' (TOTAL VERTICAL DEPTH)

WELL OPERATOR EQT PRODUCTION COMPANY ADDRESS 1710 PENNSYLVANIA AVENUE CHARLESTON, WV 25302

DESIGNATED AGENT REX C. RAY ADDRESS 1710 PENNSYLVANIA AVENUE CHARLESTON, WV 25302

11/16/2012

COUNTY NAME PERMIT