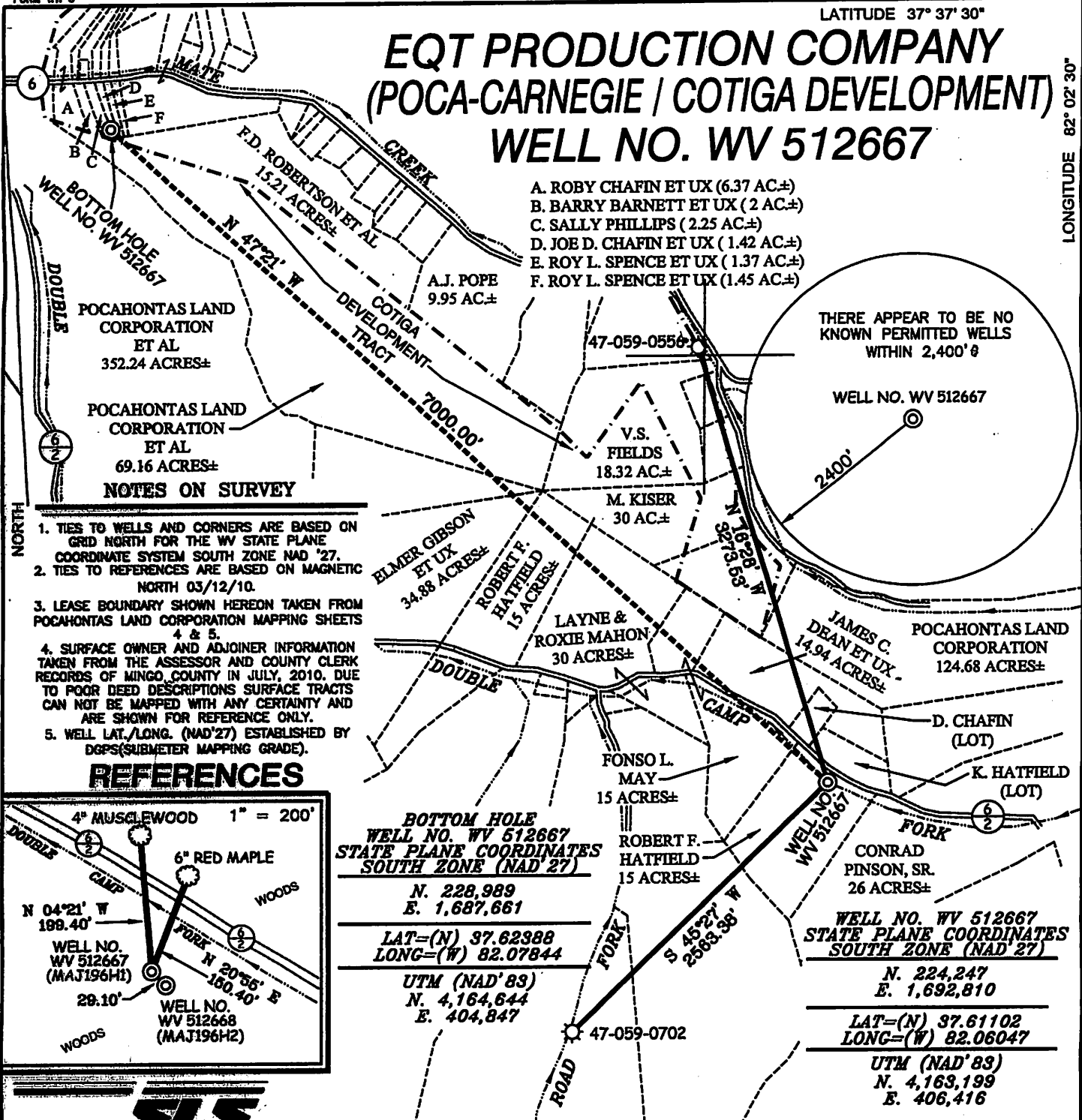


# EQT PRODUCTION COMPANY (POCA-CARNEGIE / COTIGA DEVELOPMENT) WELL NO. WV 512667

- A. ROBY CHAFIN ET UX (6.37 AC±)
- B. BARRY BARNETT ET UX (2 AC±)
- C. SALLY PHILLIPS (2.25 AC±)
- D. JOE D. CHAFIN ET UX (1.42 AC±)
- E. ROY L. SPENCE ET UX (1.37 AC±)
- F. ROY L. SPENCE ET UX (1.45 AC±)



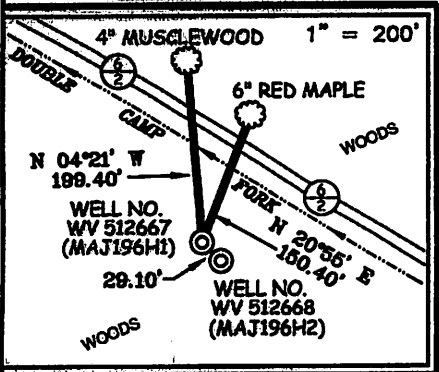
**POCAHONTAS LAND CORPORATION ET AL**  
352.24 ACRES±

**POCAHONTAS LAND CORPORATION ET AL**  
69.16 ACRES±

**NOTES ON SURVEY**

1. TIES TO WELLS AND CORNERS ARE BASED ON GRID NORTH FOR THE WV STATE PLANE COORDINATE SYSTEM SOUTH ZONE NAD '27.
2. TIES TO REFERENCES ARE BASED ON MAGNETIC NORTH 03/12/10.
3. LEASE BOUNDARY SHOWN HEREON TAKEN FROM POCAHONTAS LAND CORPORATION MAPPING SHEETS 4 & 5.
4. SURFACE OWNER AND ADJOINER INFORMATION TAKEN FROM THE ASSESSOR AND COUNTY CLERK RECORDS OF MINGO COUNTY IN JULY, 2010. DUE TO POOR DEED DESCRIPTIONS SURFACE TRACTS CAN NOT BE MAPPED WITH ANY CERTAINTY AND ARE SHOWN FOR REFERENCE ONLY.
5. WELL LAT./LONG. (NAD'27) ESTABLISHED BY DGPS (SUBMETER MAPPING GRADE).

### REFERENCES



**BOTTOM HOLE**  
WELL NO. WV 512667  
STATE PLANE COORDINATES  
SOUTH ZONE (NAD 27)

N. 228,989  
E. 1,687,661

LAT=(N) 37.62388  
LONG=(W) 82.07844

UTM (NAD'83)  
N. 4,164,644  
E. 404,847

**WELL NO. WV 512667**  
STATE PLANE COORDINATES  
SOUTH ZONE (NAD 27)

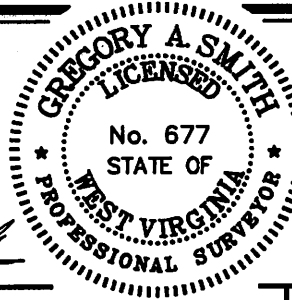
N. 224,247  
E. 1,692,810

LAT=(N) 37.61102  
LONG=(W) 82.06047

UTM (NAD'83)  
N. 4,163,199  
E. 406,416




I THE UNDERSIGNED, HEREBY CERTIFY THAT THIS PLAT IS CORRECT TO THE BEST OF MY KNOWLEDGE AND BELIEF AND SHOWS ALL THE INFORMATION REQUIRED BY LAW AND THE REGULATIONS ISSUED AND PRESCRIBED BY THE DIVISION OF ENVIRONMENTAL PROTECTION.



(+) DENOTES LOCATION OF WELL ON UNITED STATES TOPOGRAPHIC MAPS.  
DATE OCTOBER 19, 20 10  
OPERATORS WELL NO. WV 512667  
API WELL NO. 47-059-02188 H  
STATE OF WEST VIRGINIA COUNTY PERMIT

MINIMUM DEGREE OF ACCURACY 1 / 2500 FILE NO. 4872P512667(299-05)  
PROVEN SOURCE OF ELEVATION DGPS (SUBMETER MAPPING GRADE) SCALE 1" = 1000'

STATE OF WEST VIRGINIA  
DIVISION OF ENVIRONMENTAL PROTECTION  
OFFICE OF OIL AND GAS



WELL TYPE: OIL  GAS  LIQUID INJECTION  WASTE DISPOSAL  IF "GAS" PRODUCTION  STORAGE  DEEP  SHALLOW

LOCATION: ELEVATION 1403' WATERSHED DOUBLE CAMP FORK OF MATE CREEK  
DISTRICT MAGNOLIA COUNTY MINGO QUADRANGLE MAJESTIC 7.5'  
SURFACE OWNER ROBERT HATFIELD ACREAGE 15 +/-  
ROYALTY OWNER PENN VIRGINIA OIL & GAS CORP. (38,753.36 AC±) / COTIGA DEVELOPMENT CO.

PROPOSED WORK: LEASE NO. 717459 / 080687  
DRILL  CONVERT  DRILL DEEPER  REDRILL  FRACTURE OR STIMULATE  PLUG OFF OLD FORMATION   
PERFORATE NEW FORMATION  PLUG AND ABANDON  CLEAN OUT AND REPLUG  OTHER   
PHYSICAL CHANGE IN WELL (SPECIFY) \_\_\_\_\_ TARGET FORMATION LOWER HURON  
ESTIMATED DEPTH 4,880' (TOTAL VERTICAL DEPTH)

WELL OPERATOR EQT PRODUCTION COMPANY DESIGNATED AGENT REX C. RAY  
ADDRESS 1710 PENNSYLVANIA AVENUE ADDRESS 1710 PENNSYLVANIA AVENUE  
CHARLESTON, WV 25302 CHARLESTON, WV 25302