

CARNEGIE NATURAL GAS CO. LEASE (POCA-CARNEGIE) 38,753.36 ACRES± WELL NO. WV 512786

BOTTOM HOLE
WELL NO.
WV 512786

N 58°05' W
7000.00'

POCAHONTAS LAND
CORPORATION
160.04 ACRES±

POCAHONTAS LAND
CORPORATION
32.38 ACRES±

POCAHONTAS LAND
CORPORATION
34.16 ACRES±

POCAHONTAS
LAND
CORPORATION
244.56 ACRES±

POCAHONTAS
LAND
CORPORATION
418.12 ACRES±

WELL NO. WV 512786
STATE PLANE COORDINATES
SOUTH ZONE (NAD 27)

N. 225,509
E. 1,728,094

LAT=(N) 37.61553
LONG=(W) 81.93872

UTM (NAD' 83)
N. 4,163,585
E. 417,168

POCAHONTAS
LAND
CORPORATION
648.05 ACRES±

47-059-0963-P

WELL NO.
WV 512786

POCAHONTAS
LAND CORP.
264.27 AC.±

POCAHONTAS LAND
CORPORATION
879.15 ACRES±

BOTTOM HOLE
WELL NO. WV 512786
STATE PLANE COORDINATES
SOUTH ZONE (NAD 27)

N. 229,210
E. 1,722,152

LAT=(N) 37.62553
LONG=(W) 81.95936

UTM (NAD' 83)
N. 4,164,713
E. 415,357

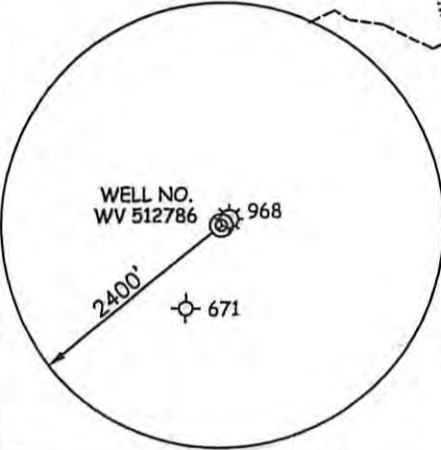
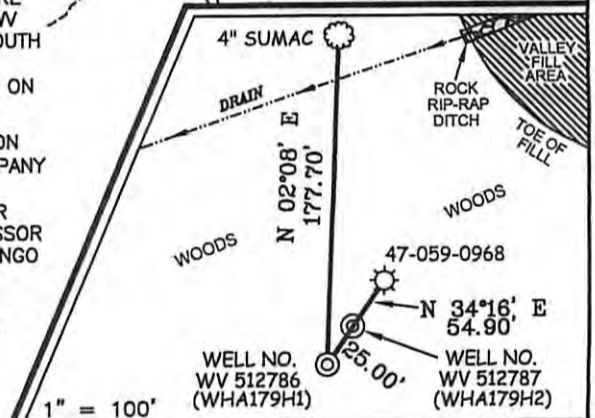
P/O POCAHONTAS
LAND CORP.
1,204.82 AC.±

MINGO-LOGAN
COAL
2.5 AC.±

NOTES ON SURVEY

1. TIES TO WELLS AND CORNERS ARE BASED ON GRID NORTH FOR THE WV STATE PLANE COORDINATE SYSTEM SOUTH ZONE NAD '27.
2. TIES TO REFERENCES ARE BASED ON MAGNETIC NORTH 01/28/10.
3. LEASE BOUNDARY SHOWN HEREON TAKEN FROM POCAHONTAS LAND COMPANY PROPERTY MAPS (SHEET 14).
4. SURFACE OWNER AND ADJOINER INFORMATION TAKEN FROM THE ASSESSOR AND COUNTY CLERK RECORDS OF MINGO COUNTY IN JULY, 2009.
5. WELL LAT./LONG. (NAD'27) ESTABLISHED BY DGPS(SUBMETER MAPPING GRADE).

REFERENCES



I THE UNDERSIGNED, HEREBY CERTIFY THAT THIS PLAT IS CORRECT TO THE BEST OF MY KNOWLEDGE AND BELIEF AND SHOWS ALL THE INFORMATION REQUIRED BY LAW AND THE REGULATIONS ISSUED AND PRESCRIBED BY THE DIVISION OF ENVIRONMENTAL PROTECTION.

P.S. 677

Gregory A. Smith



(+) DENOTES LOCATION OF WELL ON UNITED STATES TOPOGRAPHIC MAPS.

DATE JULY 29, 20 10

OPERATORS WELL NO. WV 512786

API WELL NO. 47-059-02189H
STATE COUNTY PERMIT

CANCELLED

MINIMUM DEGREE OF ACCURACY 1/2500 FILE NO. 4672P512786 (289-69)

PROVEN SOURCE OF ELEVATION DGPS (SUBMETER MAPPING GRADE) SCALE 1" = 2000'

STATE OF WEST VIRGINIA
DIVISION OF ENVIRONMENTAL PROTECTION
OFFICE OF OIL AND GAS



WELL TYPE: OIL GAS LIQUID INJECTION WASTE DISPOSAL IF "GAS" PRODUCTION STORAGE DEEP SHALLOW

LOCATION: ELEVATION 1,305' WATERSHED BEECH FORK OF BEN CREEK

DISTRICT STAFFORD COUNTY MINGO QUADRANGLE WHARNCLIFFE 7.5'

SURFACE OWNER POCAHONTAS LAND CORPORATION ACREAGE 264.27±

ROYALTY OWNER PENN VIRGINIA OIL & GAS CORPORATION LEASE ACREAGE 38,753.36±

PROPOSED WORK: LEASE NO. 717459

DRILL CONVERT DRILL DEEPER REDRILL FRACTURE OR STIMULATE PLUG OFF OLD

FORMATION PERFORATE NEW FORMATION PLUG AND ABANDON CLEAN OUT AND REPLUG OTHER

PHYSICAL CHANGE IN WELL (SPECIFY) _____ TARGET FORMATION LOWER HURON
ESTIMATED DEPTH 5,000' (TOTAL VERTICAL DEPTH)

WELL OPERATOR EQT PRODUCTION COMPANY DESIGNATED AGENT REX C. RAY
ADDRESS 1710 PENNSYLVANIA AVENUE ADDRESS 1710 PENNSYLVANIA AVENUE
CHARLESTON, WV 25302 CHARLESTON, WV 25302

COUNTY NAME PERMIT