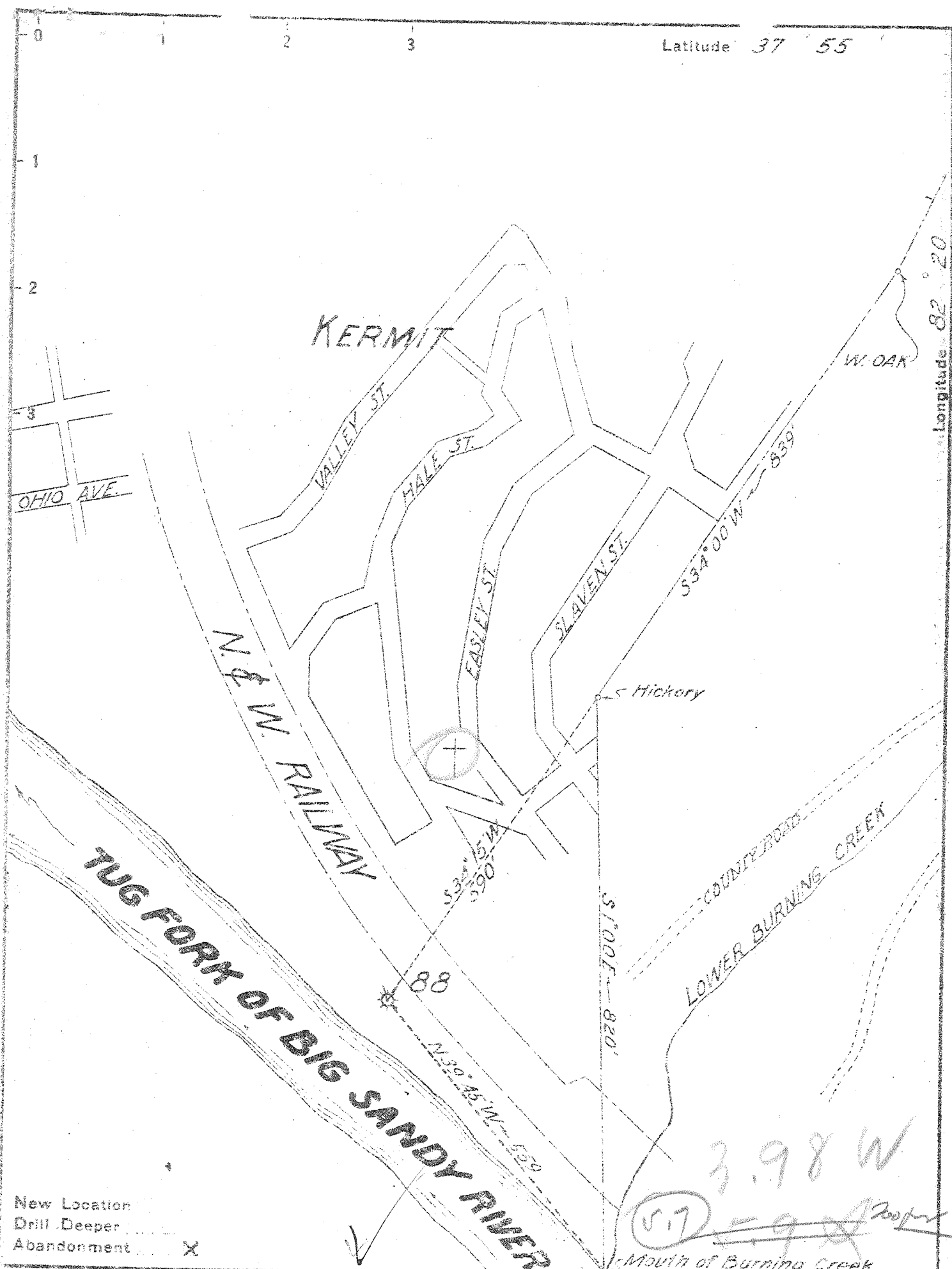


Latitude 37 55

Longitude 82 20



New Location  
 Drill Deeper  
 Abandonment  X

3.98 W  
 5.7 5.9  
 Mouth of Burning Creek

Company UNITED FUEL GAS CO. OCT 15 1946  
 Address CHARLESTON, W. VA.  
 Farm JAMES VINCENT  
 Tract \_\_\_\_\_ Acres 346 Lease No. 2388  
 Well (Farm) No. \_\_\_\_\_ Serial No. 88  
 Elevation (Spirit Level) 622'  
 Quadrangle NAUGATUCK  
 County MINGO District KERMIT  
 Engineer \_\_\_\_\_  
 Engineer's Registration No. 662  
 File No. 18-23 Drawing No. \_\_\_\_\_  
 Date OCT. 1, 1946 Scale 1" = 200'

STATE OF WEST VIRGINIA  
 DEPARTMENT OF MINES  
 OIL AND GAS DIVISION  
 CHARLESTON

WELL LOCATION MAP  
 FILE NO. MINGO-14-A

+ Denotes location of well on United States Topographic Maps, scale 1 to 62,500, latitude and longitude lines being represented by border lines as shown.

- Denotes one inch spaces on border line of original tracing.

JAMES VINSON NO. 88 WELL.

Kernit Corp., Mingo County, W. Va.

By United Fuel Gas Co., Box 1273, Charleston, 25, W. Va.

Abandoned under permit Mingo-.....-A1

On 345 acres, on Tug Fork of Big Sandy River.

Elevation, 622' B.

Minerals owned by United Fuel Gas Co., Charleston, W. Va.

Drilling commenced July 1899.

10" casing, 40'; 5 $\frac{1}{2}$ "", 700'.

Anchor packer.

No coal was encountered.

Gas well. Record to Dept. of Mines dated Sept. 30, 1946.

Record to RGT from Mrs. Griffith September 27, 1949. Old File No. 90.

	Top.	Bottom.
Shale		0 - 900
Big line (gas, 1287')	1075 -	....
Total depth		1302

.....LOWER SNEED (WARFIELD TRACT) NO....WELL.  
No. 3 O.F. (Mingo)

.....District, Mingo County, W. Va.

United Fuel Gas Co.

Well No.....on Lower Sneed (Warfield Tract).

Drilling completed July, 1899.

Contractors, Jack Robinson.

Drillers names, Carbon Company.

Turned into line March 1, 1902.

10" drive pipe, 40'; 5-5/8" casing, 700'; tubed with 2" pipe.

Anchor packer set 200' from bottom. Gauge (Cage?) 20' from bottom.

	Top.	Bottom.
Shale gas at	900	
Top of Big Lime	1075	
Total depth (gas, 1287-1302')		1302

.....District, Mingo County, W. Va.  
Record of well No.....on Lower Sneed (Warfield Tract).  
Drilling completed July, 1899.  
Contractors, Jack Robinson.  
Drillers names, Carbon Company.

7  
Turned into line March 1, 1902.  
40' of 10" drive pipe.  
700' of 5-5/8" casing.

Shale gas at 900'.

Top of Big Lime, 1075'.

Total depth, 1302'.

Got gas in the last 15' drilled.

Tubed with 2" pipe.

Anchor packer set 200' from the bottom.

Gauge (Cage?) 20' from bottom.



STATE OF WEST VIRGINIA  
DEPARTMENT OF MINES  
OIL AND GAS DIVISION

90

WELL RECORD  
(Abandonment)

Oil or Gas Well Gas  
(KIND)

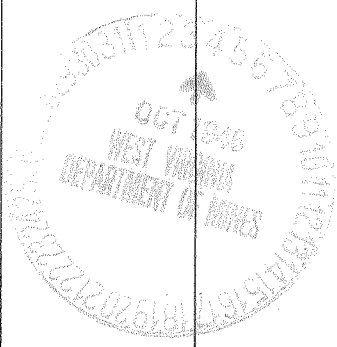
Permit No. 14-A  
Company United Fuel Gas Company  
Address P.O. Box 1273, Charleston 25, W. Va.  
Farm James Vinson Acres 345.2  
Location (waters) Tug Fork of Big Sandy River  
Well No. 88 Elev. 622B  
District Kernit Corp. County Mingo  
The surface of tract is owned in fee by \_\_\_\_\_  
Address \_\_\_\_\_  
Mineral rights are owned by U. F. G. Co.  
Address Charleston, W. Va.  
Drilling commenced July 1899  
Drilling completed \_\_\_\_\_  
Date Shot \_\_\_\_\_ From \_\_\_\_\_ To \_\_\_\_\_  
With \_\_\_\_\_  
Open Flow \_\_\_\_\_ /10ths Water in \_\_\_\_\_ Inch  
\_\_\_\_\_ /10ths Merc. in \_\_\_\_\_ Inch  
Volume \_\_\_\_\_ Cu. Ft.  
Rock Pressure \_\_\_\_\_ lbs. \_\_\_\_\_ hrs.  
Oil \_\_\_\_\_ bbls., 1st 24 hrs.  
Fresh water \_\_\_\_\_ feet \_\_\_\_\_ feet  
Salt water \_\_\_\_\_ feet \_\_\_\_\_ feet

Casing and Tubing	Used in Drilling	Left in Well	Packers
Size			
16			Kind of Packer <u>Anchor</u>
13			
10	<u>40</u>		Size of _____
8 1/4			
<del>8 1/2</del> <u>5 5/8</u>	<u>700</u>		Depth set _____
5 3/16			
3			Perf. top _____
2			Perf. bottom _____
Liners Used			Perf. top _____
			Perf. bottom _____

CASING CEMENTED \_\_\_\_\_ SIZE \_\_\_\_\_ No. Ft. \_\_\_\_\_ Date \_\_\_\_\_

No  
COAL WAS ENCOUNTERED AT \_\_\_\_\_ FEET \_\_\_\_\_ INCHES  
\_\_\_\_\_ FEET \_\_\_\_\_ INCHES \_\_\_\_\_ FEET \_\_\_\_\_ INCHES  
\_\_\_\_\_ FEET \_\_\_\_\_ INCHES \_\_\_\_\_ FEET \_\_\_\_\_ INCHES

Formation	Color	Hard or Soft	Top	Bottom	Oil, Gas or Water	Depth Found	Remarks
Shale			0	900			
Big Lime			1075	-			
Total Depth				1302	Gas	1287	



SEP 27 1949

Formation	Color	Hard or Soft	Top	Bottom	Oil, Gas or Water	Depth Found	Remarks

Date September 30, 1946

APPROVED United Fuel Gas Co., Owner

By G. H. Moore  
(Title)

Chief Engineer. (R)