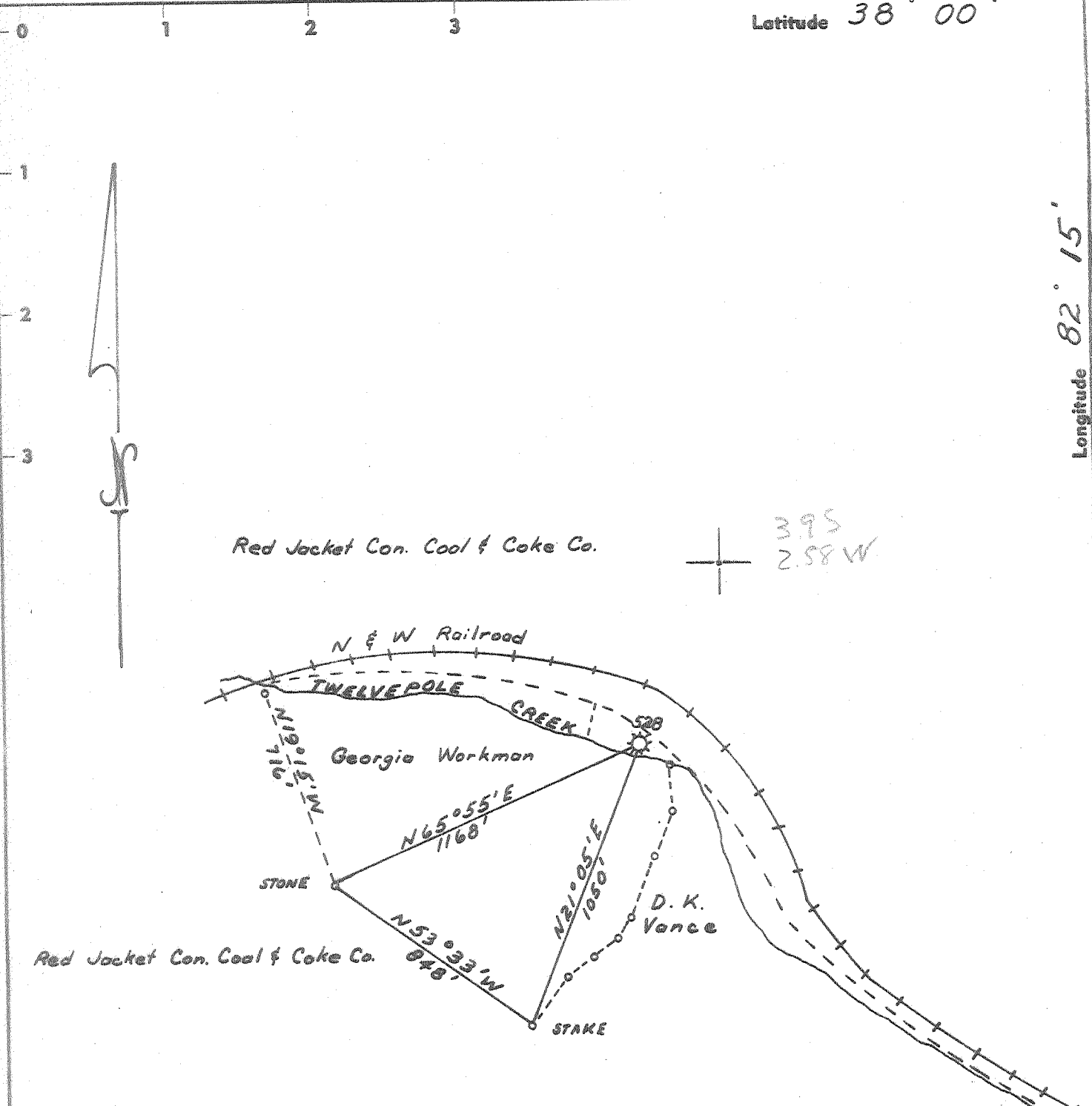


Latitude 38° 00'

Longitude 82° 15'



- New Location .
 - Drill Deeper
 - Redrill
 - Abandonment
- ISSUED 5-21-68

MINIMUM ERROR OF CLOSURE 1 IN 200
 SOURCE OF ELEVATION: BM 777 NEAR MOUTH OF BOARDCAMP BRANCH
 "I, the undersigned, hereby certify that this map is correct to the best of my knowledge and belief and shows all the information required by paragraph 6 of the rules and regulations of the oil and gas section of the mining laws of West Virginia."

Company	HAL PACK
Address	HAMLIN, WEST VIRGINIA
Farm	GEORGIA WORKMAN
Tract	Acres 32 Lease No. 2115
Well (Farm) No.	Serial No. 528
Elevation (Spirit Level)	781
Quadrangle	NAUGATUCK NE
County	MINGO District HARVEY
Engineer	G. H. Hall
Engineer's Registration No.	2602
File No.	Drawing No.
Date	1-31-68 Scale 1" = 500'

STATE OF WEST VIRGINIA
 DEPARTMENT OF MINES
 OIL AND GAS DIVISION
 CHARLESTON

WELL LOCATION MAP
 FILE NO. MIN-47-A

+ Denotes location of well on United States Topographic Maps, scale 1 to 62,500, latitude and longitude lines being represented by border lines as shown.
 - Denotes one inch spaces on border line of original tracing.

(243)