





Hundred: WV, PA Scale: 1" = 0.379MI 610MI 2,000FT 1 MI = 2,640' 1 cm = 240MI

WADSTOWN 2.6 MI. WADSTOWN 2.6 MI. WADSTOWN 2.6 MI. WADSTOWN 2.6 MI. WADSTOWN 2.6 MI.

WADSTOWN 2.6 MI. WADSTOWN 2.6 MI. WADSTOWN 2.6 MI. WADSTOWN 2.6 MI. WADSTOWN 2.6 MI.

WADSTOWN 2.6 MI. WADSTOWN 2.6 MI. WADSTOWN 2.6 MI. WADSTOWN 2.6 MI. WADSTOWN 2.6 MI.

WADSTOWN 2.6 MI. WADSTOWN 2.6 MI. WADSTOWN 2.6 MI. WADSTOWN 2.6 MI. WADSTOWN 2.6 MI.

WADSTOWN 2.6 MI. WADSTOWN 2.6 MI. WADSTOWN 2.6 MI. WADSTOWN 2.6 MI. WADSTOWN 2.6 MI.

WADSTOWN 2.6 MI. WADSTOWN 2.6 MI. WADSTOWN 2.6 MI. WADSTOWN 2.6 MI. WADSTOWN 2.6 MI.

WADSTOWN 2.6 MI. WADSTOWN 2.6 MI. WADSTOWN 2.6 MI. WADSTOWN 2.6 MI. WADSTOWN 2.6 MI.

WADSTOWN 2.6 MI. WADSTOWN 2.6 MI. WADSTOWN 2.6 MI. WADSTOWN 2.6 MI. WADSTOWN 2.6 MI.

WADSTOWN 2.6 MI. WADSTOWN 2.6 MI. WADSTOWN 2.6 MI. WADSTOWN 2.6 MI. WADSTOWN 2.6 MI.

WADSTOWN 2.6 MI. WADSTOWN 2.6 MI. WADSTOWN 2.6 MI. WADSTOWN 2.6 MI. WADSTOWN 2.6 MI.

WADSTOWN 2.6 MI. WADSTOWN 2.6 MI. WADSTOWN 2.6 MI. WADSTOWN 2.6 MI. WADSTOWN 2.6 MI.

WADSTOWN 2.6 MI. WADSTOWN 2.6 MI. WADSTOWN 2.6 MI. WADSTOWN 2.6 MI. WADSTOWN 2.6 MI.

WADSTOWN 2.6 MI. WADSTOWN 2.6 MI. WADSTOWN 2.6 MI. WADSTOWN 2.6 MI. WADSTOWN 2.6 MI.

WADSTOWN 2.6 MI. WADSTOWN 2.6 MI. WADSTOWN 2.6 MI. WADSTOWN 2.6 MI. WADSTOWN 2.6 MI.

WADSTOWN 2.6 MI. WADSTOWN 2.6 MI. WADSTOWN 2.6 MI. WADSTOWN 2.6 MI. WADSTOWN 2.6 MI.

WADSTOWN 2.6 MI. WADSTOWN 2.6 MI. WADSTOWN 2.6 MI. WADSTOWN 2.6 MI. WADSTOWN 2.6 MI.

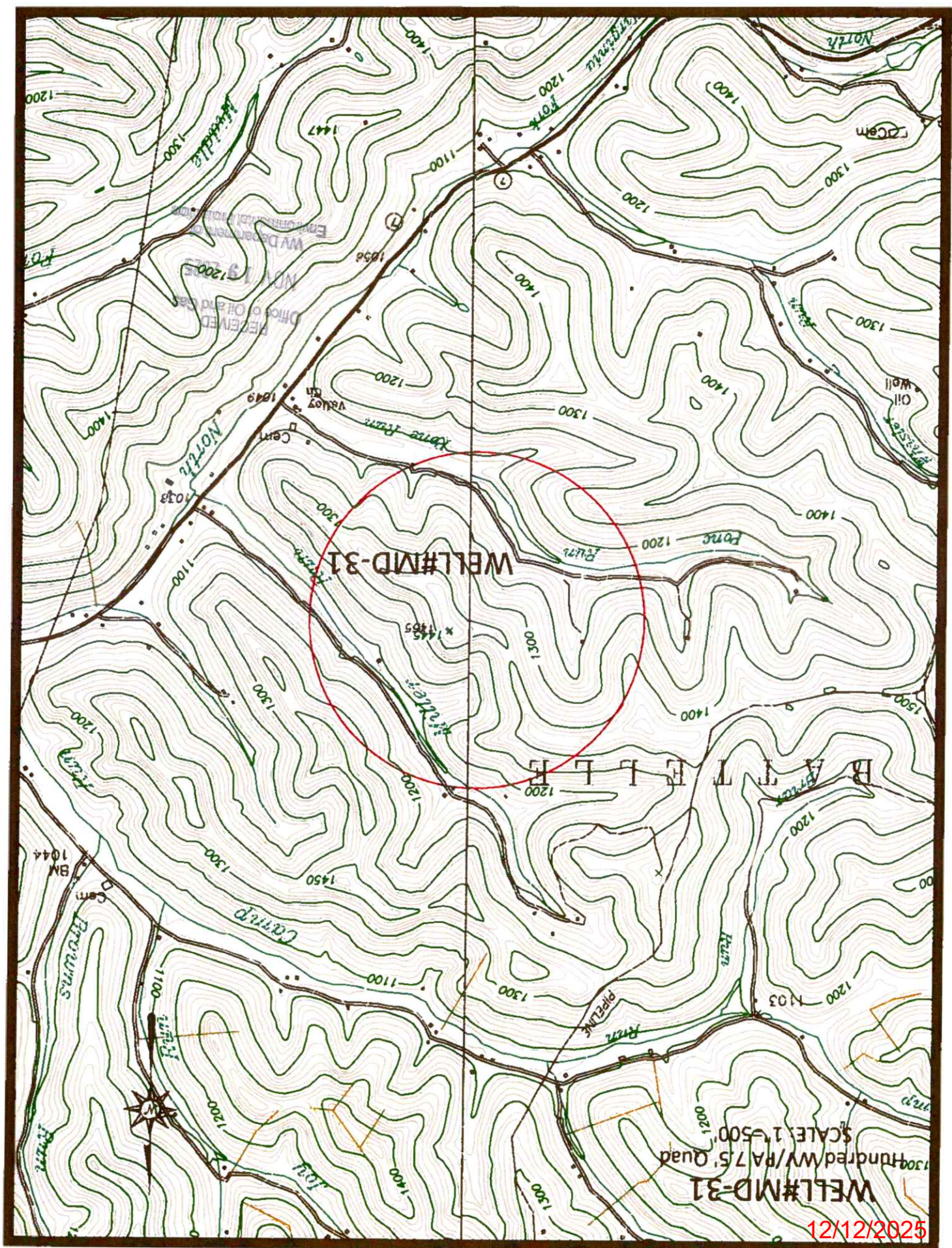
WADSTOWN 2.6 MI. WADSTOWN 2.6 MI. WADSTOWN 2.6 MI. WADSTOWN 2.6 MI. WADSTOWN 2.6 MI.

WADSTOWN 2.6 MI. WADSTOWN 2.6 MI. WADSTOWN 2.6 MI. WADSTOWN 2.6 MI. WADSTOWN 2.6 MI.

RECEIVED
Office of Oil and Gas
NOV 19 2025
WV Department of
Environmental Protection

12/12/2025







West Virginia Department of Environmental Protection
Office of Oil and Gas

WELL LOCATION FORM: GPS

API: 47-061-00005 WELL NO.: MD-31
FARM NAME: ARMINA BEAN #5385
RESPONSIBLE PARTY NAME: WEST VIRGINIA LAND RESOURCES INC.
COUNTY: MONONGALIA DISTRICT: BATTELLE
QUADRANGLE: HUNDRED WV, PA
SURFACE OWNER: CONSOL MINING COMPANY LLC
ROYALTY OWNER: _____
UTM GPS NORTHING: 4,392,225 m
UTM GPS EASTING: 553,587 m GPS ELEVATION: 425 m

The Responsible Party named above has chosen to submit GPS coordinates in lieu of preparing a new well location plat for a plugging permit or assigned API number on the above well. The Office of Oil and Gas will not accept GPS coordinates that do not meet the following requirements:

1. Datum: NAD 1983, Zone: 17 North, Coordinate Units: meters, Altitude: height above mean sea level (MSL) meters.
2. Accuracy to Datum 3.05 meters
3. Data Collection Method:

Survey grade GPS ____: Post Processed Differential ____

Real-Time Differential ____

Mapping Grade GPS X: Post Processed Differential X

Real-Time Differential ____

4. Letter size copy of the topography map showing the well location.

I the undersigned, hereby certify this data is correct to the best of my knowledge and belief and shows all the information required by law and the regulations issued and prescribed by the Office of Oil and Gas.

Signature

PS 2002

Title

OCTOBER 31, 2025

Date

RECEIVED
Office of Oil and Gas

NOV 19 2005

WV Department of
Environmental Protection

12/12/2025