

LATITUDE

LONGITUDE

110612100

1.033  
1.72w

7'5 OGIS topo location

7.5' loc ~~1.178~~  
~~1.67w~~

15' loc ~~1.175~~  
(calc.) ~~3.80w~~

Company \_\_\_\_\_

Farm \_\_\_\_\_

Quad 15' WC

County \_\_\_\_\_

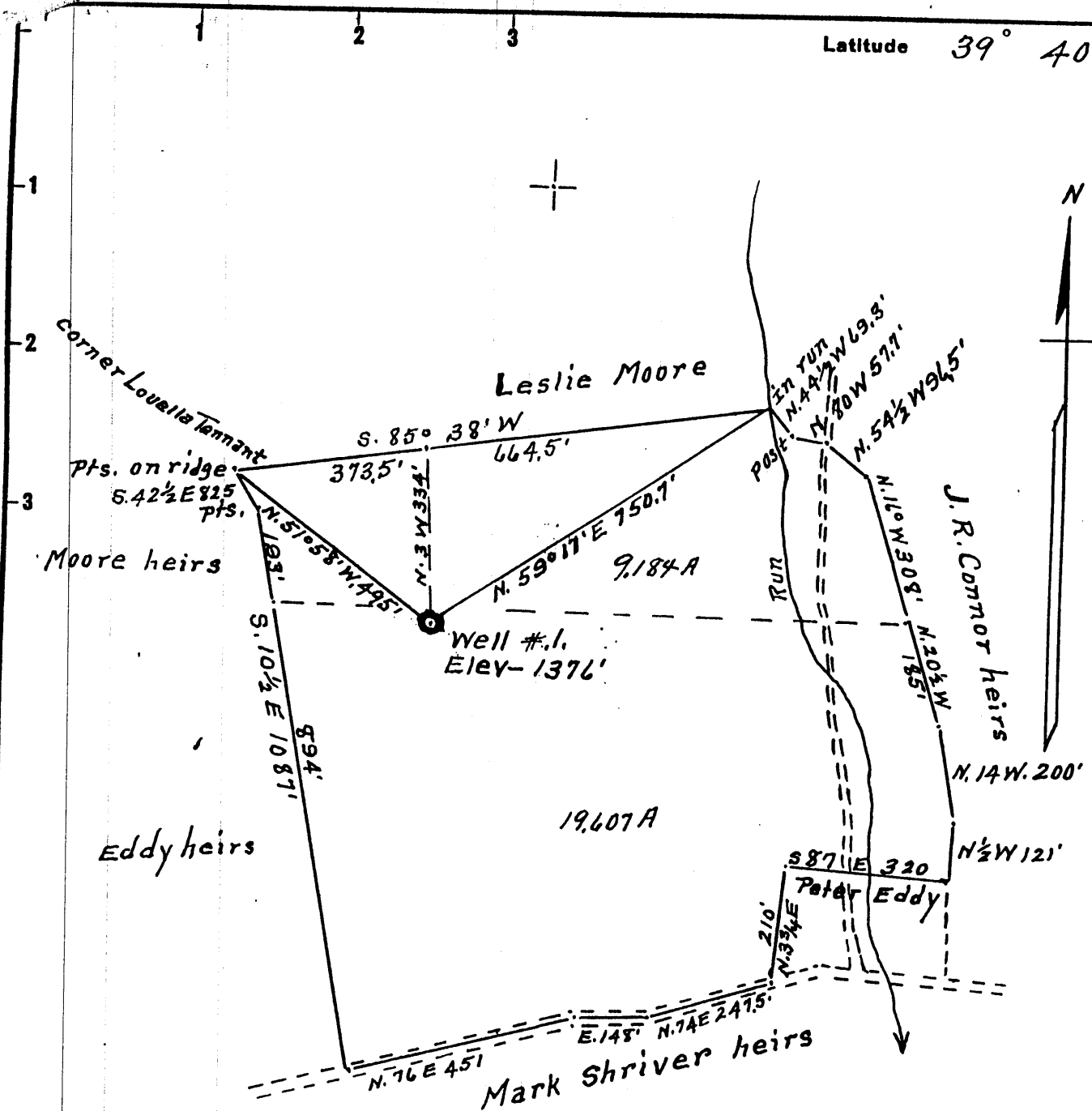
District Clay

WELL LOCATION MAP

File No. 110612100

Latitude 39° 40'

Longitude 80° 10'



Surface = J.R. Connor, heirs  
 % Mrs. Joe Sordi, 318. Haymond St.  
 Fairmont W.Va.  
 COB = Consolidation Coal Co. % Jamison Mine #9  
 Farmington W.Va.

New Location..   
 Drill Deeper.....   
 Abandonment.....

Company Dunn-Mar Oil & Gas Co.  
 Address Waynesburg, Pa.  
 Farm J. R. & Alice Connor  
 Tract 1 Acres 28+ Lease No. \_\_\_\_\_  
 Well (Farm) No. 1 Serial No. \_\_\_\_\_  
 Elevation (Spirit Level) 1376'  
 Quadrangle Blacksville, W.Va.  
 County Monongalia District Clay  
 Engineer A. L. Headley  
 Engineer's Registration No. 2021  
 File No. \_\_\_\_\_ Drawing No. \_\_\_\_\_  
 Date 12-8-1955 Scale 1" = 300'

STATE OF WEST VIRGINIA  
 DEPARTMENT OF MINES  
 OIL AND GAS DIVISION  
 CHARLESTON

**WELL LOCATION MAP**  
 FILE NO. WELL DRILLED UNDER  
PERMITS MON-40 061

+ Denotes location of well on United States Topographic Maps, scale 1 to 62,500, latitude and longitude lines being represented by border lines as shown.

- Denotes one inch spaces on border line of original tracing.

LOCATION OF WELL NO. 5402

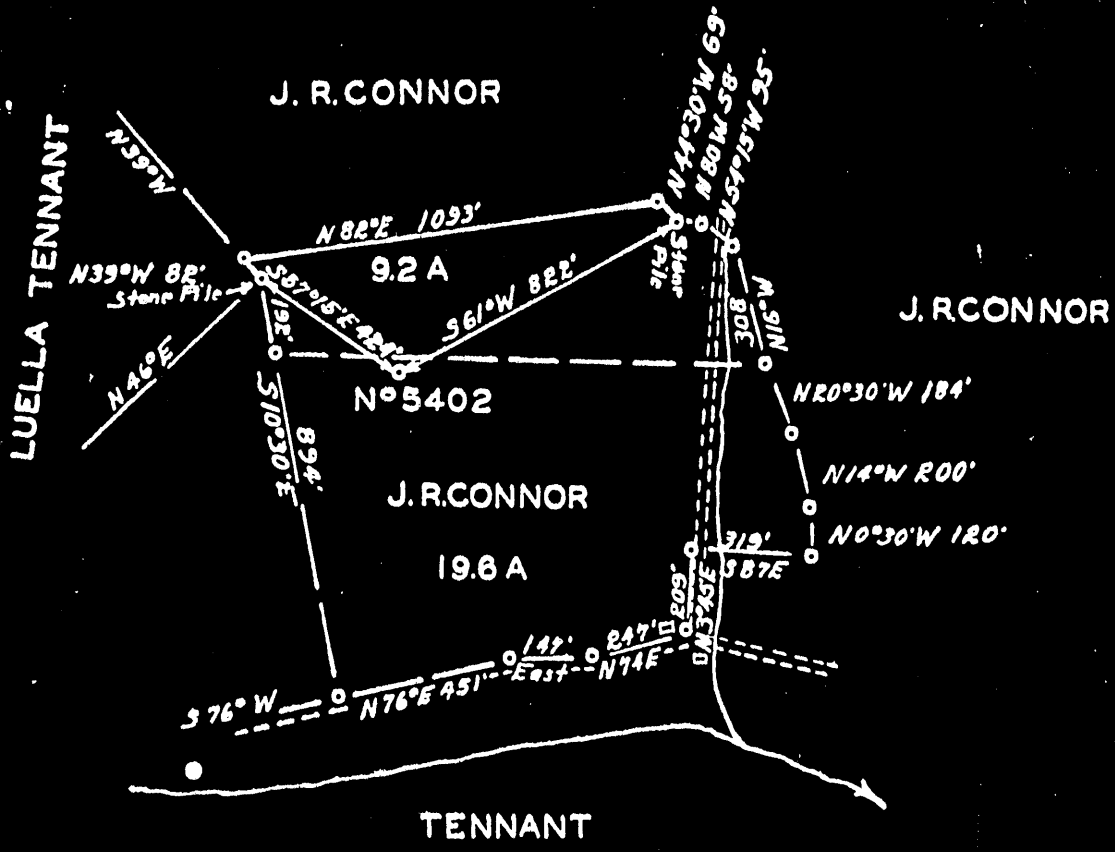
PHILADELPHIA OIL COMPANY OF PITTSBURGH PA.

LEASE NO. 20514 LESSOR J. R. CONNOR ACRES 288

DISTRICT CLAY COUNTY MONONGALIA STATE W. VA.

QTR. QUADRANGLE BLACKSVILLE NW 3-3 DATE MARCH 2 1931 NO. ON LEASE 1

LEASE EXPIRES F. RESERVATION ELEVATION 1388



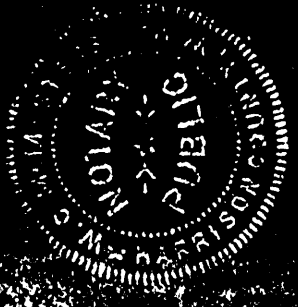
#34  
061-00040

SCALE: 1" = 500'

ENGINEER'S CERTIFICATE

I, THE UNDERSIGNED, HEREBY CERTIFY THAT THIS MAP IS CORRECT AND SHOWS ALL THE INFORMATION TO THE BEST OF MY KNOWLEDGE AND BELIEF, REQUIRED BY THE OIL AND GAS SECTION OF THE MINING LAWS OF WEST VIRGINIA.

ACKNOWLEDGED BEFORE ME, A NOTARY PUBLIC, THIS 2nd DAY OF March 1931



ENGINEER.

NOTARY PUBLIC.

Clay District, Monongalia County, W. Va.  
 By Philadelphia Oil Co., Clarksburg, W. Va.  
 On 285 acres, surface and mineral rights owned by J. Ray Conner,  
 R. F. D. No. 2, Box 122, Fairview, W. Va.  
 Drilled under permit Mon-40, issued March 16, 1931.  
 Elevation, 1368' L.  
 13" conductor, 15'; 13" casing, 285'; 8 1/2", 1954'; 10", 1063';  
 6-5/8", 2455'; 5-3/16", 2505'.  
 Coal was encountered at 687-692, 934-940, 1026-1032, 1404-1409'.  
 Completion reported to Dept. of Mines Nov. 3, 1931.  
 Well was not shot.  
 Fresh water at 1944'; salt water at 1944, 1954, 2338, and 2443'.  
 5-3/16" hole.

Mon-40

	Top.	Bottom.	Thickness.
Clay, yellow, soft	0	80	80
Sand, yellow, hard	80	109	29
Slate-Lime, white, soft (water, 1944') (SLM at 283')	109	602	493
Bluff Sand, white, hard	602	662	60
Slate, dark, soft (SLM at 692')	662	687	25
Coal, black, soft, Waynesburg	687	692	5
Slate, white, soft	692	780	88
Lime, white, hard	780	921	141
Slate, dark, soft	921	934	13
Coal, dark, (Mapletown) (SLM at 940')	934	940	6
Slate-Lime, white, hard	940	1002	62
Slate, dark, soft	1002	1026	24
Pittsburgh Coal (SLM at 1034')	1026	1032	6
Slate, white, soft	1032	1056	24
Lime, white, hard (SLM at 1061')	1056	1170	114
Red rock, soft	1170	1182	12
Slate-Lime, dark, broken	1182	1201	19
Red rock, soft	1201	1229	28
Slate-Shell, white, broken	1229	1317	88
Red rock, soft	1317	1324	7
Slate-Lime, white, hard and soft	1324	1365	41
Sandy lime, white, hard	1365	1390	25
Slate, dark, soft	1390	1404	14
Coal, black, soft	1404	1409	5
Slate, dark, soft	1409	1454	45
Little Dunkard Sand, white, hard	1454	1489	35
Slate, black, soft	1489	1528	39
Lime, white, hard	1528	1557	29
Slate-Shell, white, soft	1557	1664	107
Sand, white, hard	1664	1682	18
Slate, dark, soft	1682	1741	59
1st Gas Sand, white, hard	1741	1756	15
Slate, white, soft	1756	1803	47
2nd Gas Sand, white, hard	1803	1871	68
Slate, black, soft	1871	1878	7
Salt Sand, hard	1878	1889	11
Slate, dark, soft	1889	1939	50
Sand, dark, hard (hole full water, 1944')	1939	1950	11
Red rock, soft	1950	1953	3
Sand, white, hard (hole full water, 1954'; SLM at 1953')	1953	2052	99

(OVER)

J. RAY CONNER NO. 5402 WELL (Continued).

	Top.	Bottom.	Thickness.
Slate-Shell, white, soft	2052	- 2077	25
Red rock, soft	2077	- 2146	69
Lime, white, hard	2146	- 2152	6
Slate, white, soft	2152	- 2176	24
Maxton Sand, white, soft	2176	- 2210	34
Slate, white, soft	2210	- 2226	16
Lime, white, hard	2226	- 2238	12
Slate, white, soft	2238	- 2252	14
Little Lime, dark	2252	- 2262	10
Pencil Cave, dark, soft	2262	- 2268	6
Big Lime, white, hard	2268	- 2323	55
(SLM at 2280, 2292½, and 2326')			
Big Injun Sand, dark, hard (water at 2338'; gas at 2435'; water at 2443'; oil at 2443'; SLM, 2438')	2323	- 2535	212
Slate, dark	2535	- 2542	7
Lime-Slate, white, hard and soft	2542	- 2613	71
Squaw Sand, white, hard	2613	- 2631	18
Slate-Shell, white, medium	2631	- 2730	99
Lime, white, hard	2730	- 2752	22
Slate, white	2752	- 2794	42
Gritty lime, white, hard	2794	- 2816	22
Slate, white, soft	2816	- 2831	15
Berea Sand, white, hard	2831	- 2850	19
Slate-Lime, white, hard	2850	- 2922	72
Gantz Sand, white, hard (SLM, 2927½')	2922	- 2937	15
Slate-Shell, white, soft	2937	- 2964	27
50-Ft. Sand, white (gas, 2970')	2964	- 3039	75
Slate, white	3039	- 3045	6
30-Ft. Sand, white, hard	3045	- 3074	29
Slate-Shell, white, soft	3074	- 3115	41
Red rock, soft	3115	- 3118	3
Slate-Shells, white	3118	- 3162	44
Gordon Stray Sand, white, hard	3162	- 3176	14
Slate-Shells	3176	- 3199	23
Sand, hard	3199	- 3211	12
Red rock, soft	3211	- 3236	25
Sand, hard	3236	- 3240	4
Slate	3240	- 3246	6
Gordon Sand, hard	3246	- 3261	15
Slate-Shells	3261	- 3282	21
Sand	3282	- 3338	56
Red rock	3338	- 3343	5
Slate-Shell	3343	- 3374	31
Sand	3374	- 3383	9
Slate	3383	- 3430	47
4th Sand (gas, 3431')	3430	- 3433	3
Slate-Lime (SLM at 3449')	3433	- 3462	29
5th Sand (gas, 3463'; oil, 3463'; oil, 3466-71'; gas, 3466')	3462	- 3472	10
Total depth		3475	