

Latitude

Longitude

+ 2.475
1.83w

Topo Location

7.5' Loc. _____ 15' Loc. _____
_____ (calc.) _____

Company Roy W Clavis

Farm Ralph Johnson - Maude Hadd #1

15' Quad _____
(sec.)

7.5' Quad Blacksville

District Clay

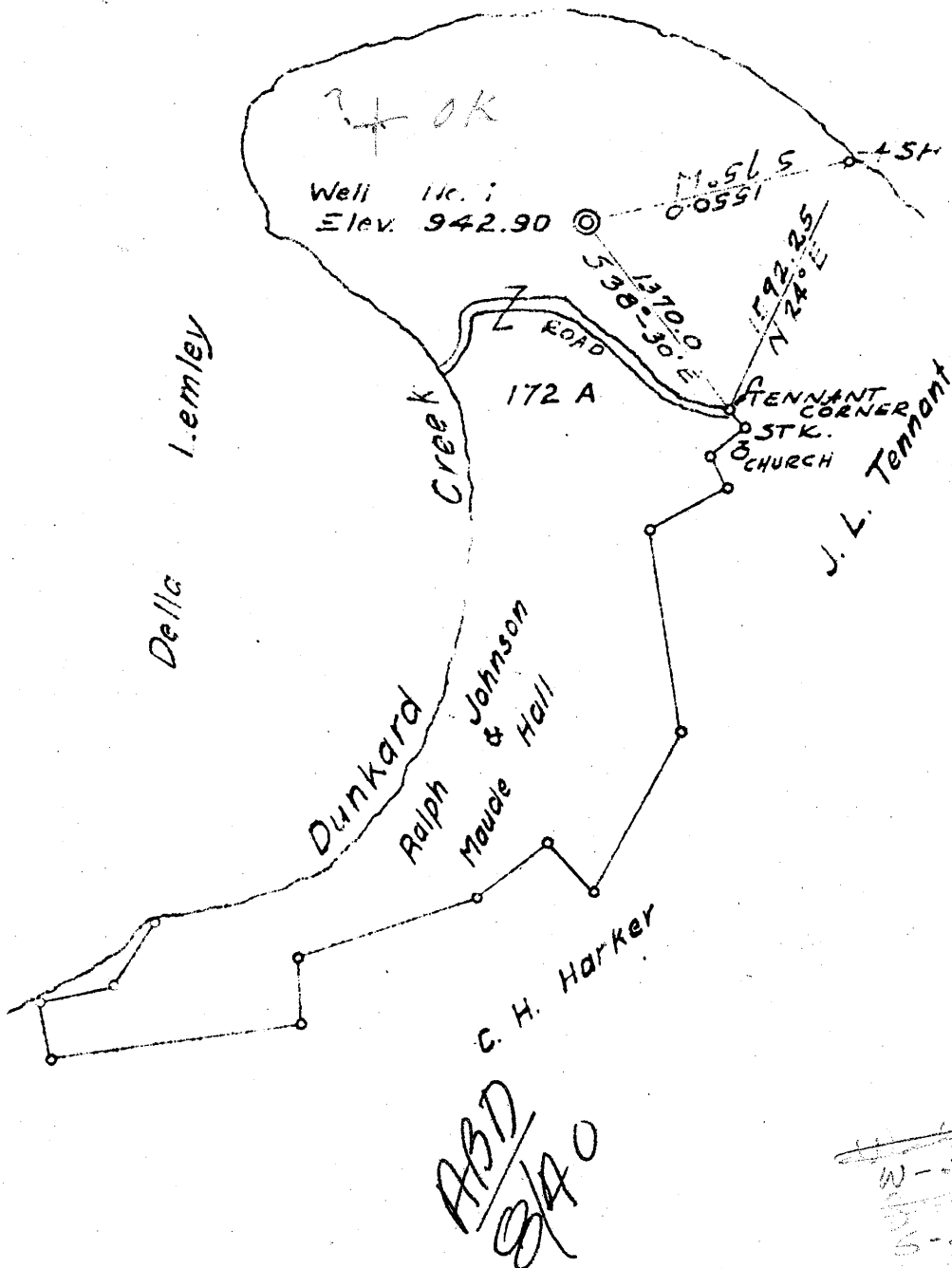
WELL LOCATION PLAT

County 061 Permit 118

Latitude 39° 45'

Longitude 80° 5'

S. E. Chalfant



New Location
 Drill Deeper
 Abandonment

ABD
 9/40

DTX

W-3, 98
 3-254

Company ROY W. CLOVIS
 Address WAYNESBURG PA
 Farm RALPH JOHNSON - MAUDE HALL
 Tract _____ Acres 172 Lease No. 1
 Well (Farm) No. 1 Serial No. _____
 Elevation (Spirit Level) 942.90
 Quadrangle BLACKSVILLE N.
 County MONONGALIA District CLAY
 Engineer CHAS. C. MCCALL
 Engineer's Registration No. PA. 4851
 File No. _____ Drawing No. _____
 Date 7/20/40 Scale 1" = 1000'

STATE OF WEST VIRGINIA
 DEPARTMENT OF MINES
 OIL AND GAS DIVISION
 CHARLESTON

WELL LOCATION MAP
 FILE NO. MON-118

+ Denotes location of well on United States Topographic Maps, scale 1 to 62,500, latitude and longitude lines being represented by border lines as shown.

- Denotes one inch spaces on border line of original tracing.

WEST VIRGINIA DEPARTMENT OF MINES
OIL & GAS DIVISION
W E L L R E C O R D

Permit No. Mon-118
Blacksville Quad.

Dry Hole

Company Roy W. Clovis
Address Waynesburg, Pa.
Farm Ralph Johnson & Maude Hall ACRES 172
Well No. 1 ELEV. 942.90 (Spirit Level)
District Clay - Monongalia County
Commenced July 24, 1940
Completed Aug. 16, 1940
Oil -
Gas -
Water -
Surface & Mineral -

CASING & TUBING
Wood Cond. 10
8-1/4 609
6-5/8 1111

Soil - yellow	0	10		Slate - gray	892	901	
Mud - blue	10	30		Lime - gray	901	908	
Lime - gray	30	32		Slate - blue	908	922	
Mud - dark	32	40		Red Rock - red	922	927	
Lime - gray	40	45		Slate - gray	927	932	
Shale - blk	45	105	W 90	Sand - gray	932	950	Moundsville
Lime - gray	105	115	1 blr.hr.	Slate - blue	950	958	
Shale - blk	115	150		Lime - gray	958	968	
Lime - gray	150	160		Slate - blue	968	1002	
Some coal at	160			Lime - gray	1002	1022	
Shale - black	160	175		Sand - gray	1022	1038	
Sand - gray	175	215	W 190	Slate - blue	1038	1042	
Slate - dark	215	230	5 Blrs.	Lime - gray	1042	1047	
Coal - blk	230	235		Slate - gray	1047	1051	
Slate - dark	235	260		Lime - gray	1051	1108	
Lime - gray	260	293		Sand - gray	1108	1147	Dunkard
Slate - gray	293	335		Slate - gray	1147	1150	
Lime - gray	335	350		Lime - gray	1150	1164	
Slate - lgt	350	370		Slate - gray	1164	1169	
Lime - gray	370	384		Lime - gray	1169	1202	
Slate - gray	384	392		Coal - black	1202	1204	
Lime - gray	392	440		Slate - dark	1204	1210	
Sand - gray	440	493		Sand - gray	1210	1241	
Coal - blk	493	499		Slate - dark	1241	1250	
Slate - drk	499	506		Lime - gray	1250	1277	
Lime - gray	506	550		Slate - dark	1277	1280	
Slate - gray	550	555		Sand - gray	1280	1292	
Lime - gray	555	562		Slate - dark	1292	1299	
Slate - gray	562	582		Sand - gray	1299	1303	
Coal - black	582	589	HFV in coal	Lime - gray	1303	1320	
Slate - blue	589	606		Sand - gray	1320	1326	
Lime - gray	606	624		Slate - black	1326	1330	
Slate - blue	624	629		Total Depth		1330	
Lime - gray	629	636					
Slate - gray	636	668					
Lime - gray	668	673					
Sand - gray	673	697					
Slate - blue	697	726					
Lime - gray	726	740					
Slate - gray	740	762					
Sand - gray	762	820					
Slate - blue	820	830					
Sand - gray	830	840					
Slate - blue	840	866					
Red Rock - red	866	892					

(Application for plugging has been submitted)