

COAL OWNED BY STATE OF WEST VA.

New location

Drill Deeper

Abandonment *issued 10-7-69*

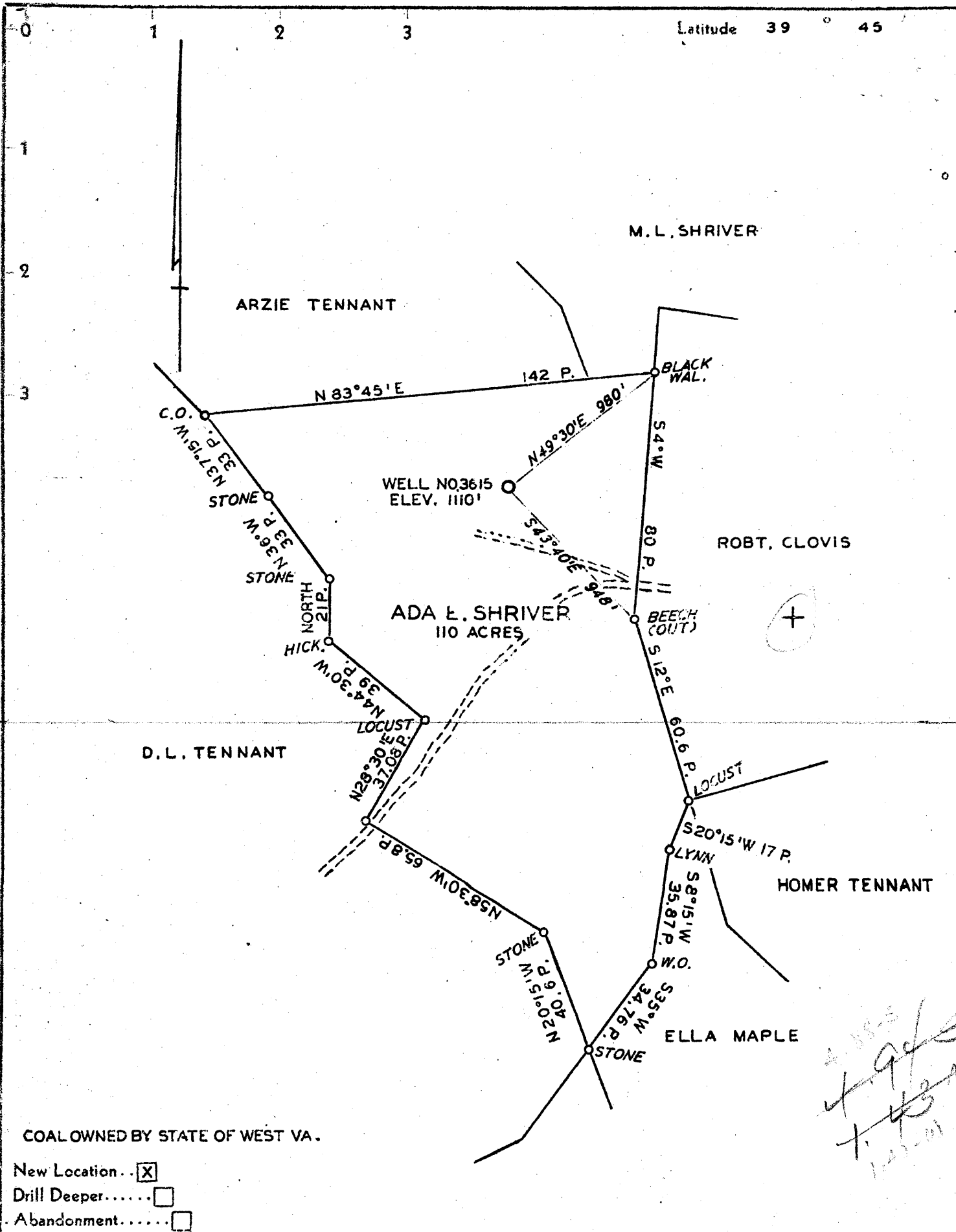
Company THE MANUFACTURERS LIGHT & HEAT CO.
 Address 600 UNION TRUST BLDG, PITTSBURGH, PA.
 Farm ADA E. SHRIVER
 Tract 1 Acres 110 Lease No. 19811
 Well (Farm) No. 1 Serial No. 3615
 Elevation (Spirit Level) 1110'
 Quadrangle MANNINGTON *Wadestown NC*
 County MONONGALIA District BATTELE
 Engineer *A. J. Russell*
 Engineer's Registration No. _____
 File No. _____ Drawing No. Y-10-262
 Date AUGUST 8, 1941 Scale 1" = 40 RDS - 660'

STATE OF WEST VIRGINIA
 DEPARTMENT OF MINES
 OIL AND GAS DIVISION
 CHARLESTON

WELL LOCATION MAP
 File No. *MON-135-P*

+ Denotes location of well on United States Topographic Maps, scale 1 to 62,500, latitude and longitude lines being represented by border lines as shown.

-- Denotes one inch spaces on border line of original tracing.



Handwritten notes:
 4-18-41
 H. J. Russell
 1-13-41

COAL OWNED BY STATE OF WEST VA.

- New Location...
- Drill Deeper.....
- Abandonment.....

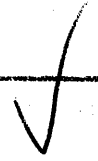
Company THE MANUFACTURERS LIGHT & HEAT CO.
 Address 800 UNION TRUST BLDG. PITTSBURGH, PA.
 Farm ADA E. SHRIVER
 Tract I Acres 110 Lease No. 19811
 Well (Farm) No. I Serial No. 3615
 Elevation (Spirit Level) 1110'
 Quadrangle MANNINGTON N.E.
 County MONONGALIA District BATTELE
 Engineer A. J. Russell
 Engineer's Registration No. _____
 File No. _____ Drawing No. Y-10-262
 Date AUGUST 6, 1941. Scale 1" = 40 RDS - 660'

STATE OF WEST VIRGINIA
 DEPARTMENT OF MINES
 OIL AND GAS DIVISION
 CHARLESTON

WELL LOCATION MAP
 File No. MON-135

+ Denotes location of well on United States Topographic Maps, scale 1 to 62,500, latitude and longitude lines being represented by border lines as shown.
 - Denotes one inch spaces on border line of original tracing.

Handwritten: 6-6-51



WEST VIRGINIA DEPARTMENT OF MINES
OIL & GAS DIVISION
WELL RECORD

Permit No. MON 135

Company
Address

The Manufacturers Light & Heat Co.
300 Union Trust Bldg., Pittsburgh,
Pa.

Gas Well

Casing & Tubing
6 5/8" 2152'9" 2152'9"
5 3/16" 3094'11" 3094'11"

Farm
Well No.
District
Surface
Mineral

Ada E. Shriver Acres 110
1 - 3615 Elev. 1110'
Battello Monongalia County
David S. Kent, Burton, W. Va.
The Mfrs. Light & Heat Co., 300
Union Trust Bldg., Pittsburgh, Pa.

Coal encountered @
173' 24"
400' 36"
490' 60"
555' 60"
812' 48"
912' 103"

Commenced
Completed
Flow

9-18-41
11-26-41
36/10ths W. in 3"
20/10ths Merc. in 6 5/8"

Volume
Rock Pressure

3,309,730 CF
675 lbs. 43 hrs.

Clay, Slate, Rock, Lime	0	95	Slate	1690	1705	
Sand	95	125	Sand	1705	1720	
Slate & Lime	125	173	Slate	1720	1765	
Coal	173	175	Sand	1765	1779	
Lime, Shells, Slate & Rock	175	400	Slate & Shells	1779	1905	
Coal	400	403	3rd Salt Sand	1905	1975	
Slate & Lime	403	490	Slate & Lime	1975	2026	
Waynesburg Coal	490	495	Maxon Sand	2026	2044	
Slate & Lime	495	529	<u>Rock, Lime, Slate</u>	2044	2200	! @ @ !!
Sand	529	555	Big Injun 30'	2200	2417	
Coal	555	560	Slate, Lime, Shells	2417	2860	Sh. oil 2860-2864
Slate	560	590	50' Sand	2860	2941	Sh. gas 2892-2894
Sand	590	639	Slate	2941	2957	also 2928-2929
Slate, Lime, Rock	639	812	30' Sand	2957	2968	
Mapletown Coal	812	816	Slate	2968	2988	
Slate & Lime	816	912	Gordon Stray	2988	2998	
Pittsburgh Coal	912	921	Rock & Slate	2998	3033	
Lime, Slate & Shells	921	1045	Gordon Sand	3033	3056	Gas 3036!
Sand	1045	1095	Sand	3056	3106	
Slate, Rock, Lime	1095	1115	Slate	3106	3123	
Slate	1115	1195	4th Sand	3123	3133	
Slate, Rock, Lime	1195	1354	Slate	3133	3140	
Slate	1354	1413	Sand	3140	3158	
Sand <i>Dunkard</i>	1413	1425	Slate	3158	3179	
Slate	1425	1430	5th Sand	3179	3215	Gas 3182-3187
Big Dunkard Sand ?	1430	1470	Slate & Gritty Lime	3215	3326	Sh. oil 3315
Slate & Lime	1470	1490	Bayard Sand	3326	3337	Gas 3328-3330
Sand	1490	1506	Slate	3337	3354	
Slate, Shell, Lime	1506	1595	Total depth		3354	
Sand	1595	1690				