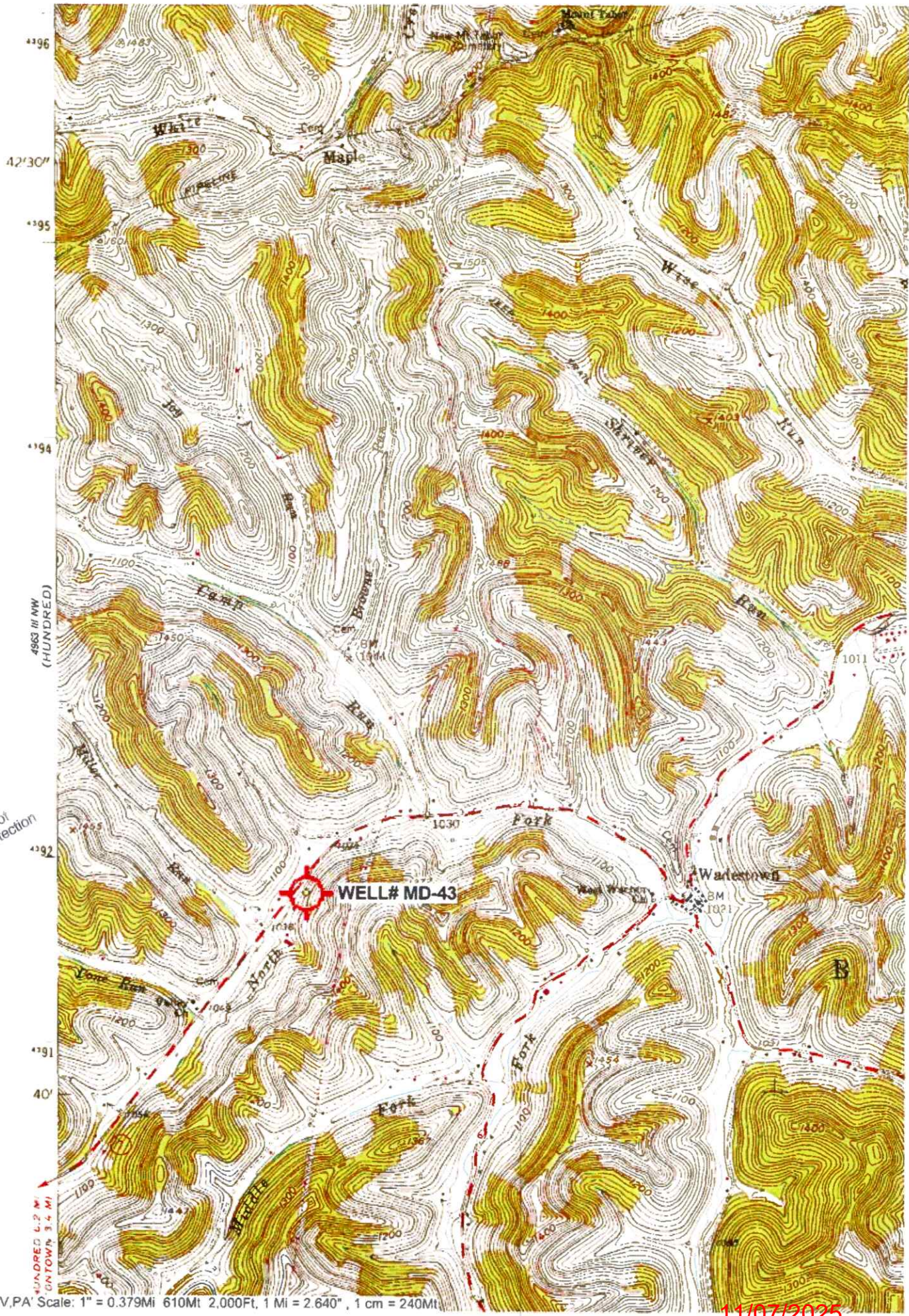


RECEIVED
Office of Oil and Gas
OCT 14 2025
WV Department of
Environmental Protection



"Wadestown, WV, PA" Scale: 1" = 0.379Mi 610Ml 2,000Ft, 1 Mi = 2.640", 1 cm = 240Ml

11/07/2025



WW-7
8-30-06



RECEIVED
Office Of Oil and Gas

OCT 14 2025

WV Department of
Environmental Protection

West Virginia Department of Environmental Protection
Office of Oil and Gas

WELL LOCATION FORM: GPS

API: 47-061-00152 WELL NO.: MD-43

FARM NAME: ADA E. SHRIVER

RESPONSIBLE PARTY NAME: WEST VIRGINIA LAND RESOURCES INC.

COUNTY: MONONGALIA DISTRICT: BATTELLE

QUADRANGLE: WADESTOWN W.VA, PA

SURFACE OWNER: MARION COUNTY COAL RESOURCES INC.

ROYALTY OWNER: _____

UTM GPS NORTHING: 4,391,961 m

UTM GPS EASTING: 554,864 m GPS ELEVATION: 330 m

The Responsible Party named above has chosen to submit GPS coordinates in lieu of preparing a new well location plat for a plugging permit or assigned API number on the above well. The Office of Oil and Gas will not accept GPS coordinates that do not meet the following requirements:

1. Datum: NAD 1983, Zone: 17 North, Coordinate Units: meters, Altitude: height above mean sea level (MSL) – meters.
2. Accuracy to Datum – 3.05 meters
3. Data Collection Method:

Survey grade GPS ☒ : Post Processed Differential

Real-Time Differential ☒

Mapping Grade GPS _____ : Post Processed Differential

Real-Time Differential

4. Letter size copy of the topography map showing the well location.

I the undersigned, hereby certify this data is correct to the best of my knowledge and belief and shows all the information required by law and the regulations issued and prescribed by the Office of Oil and Gas.

Signature

Title

SEPTEMBER 25, 2025

Date

RECEIVED
Office Of Oil and Gas

OCT 14 2025

WV Department of
Environmental Protection

11/07/2025