

39°45'00"

Latitude

80°00'00"

Longitude

+

2.70s  
.39w

**Topo Location**

7.5' Loc. \_\_\_\_\_ 15' Loc. \_\_\_\_\_

\_\_\_\_\_ (calc.) \_\_\_\_\_

Company Vam Vornhus Est

Farm BJ Kumbler #1

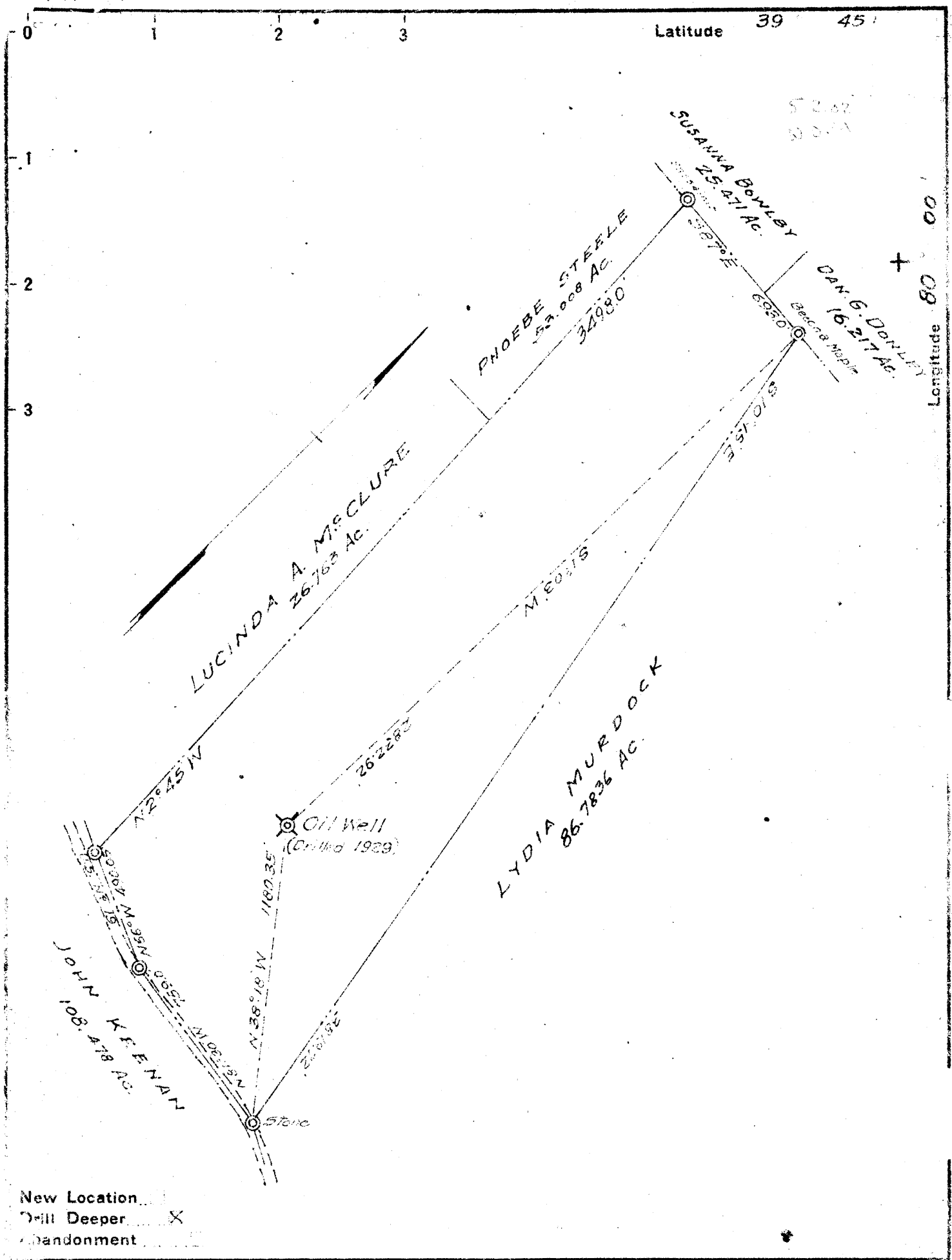
15' Quad \_\_\_\_\_  
(sec.)

7.5' Quad Osage

District Cass

**WELL LOCATION PLAT**

County 061 Permit 175



New Location   
 Drill Deeper   
 Abandonment

Company VANVOORHIS ESTATE  
 Address MAIDSVILLE, W VA  
 Farm B. J. KIMBLE  
 Tract \_\_\_\_\_ Acres 78.25 Lease No. \_\_\_\_\_  
 Well (Farm) No. 1 Serial No. \_\_\_\_\_  
 Elevation (Spirit Level) 1068.55  
 Quadrangle Blacksville  
 County Monongalia District Cass  
 Engineer C. W. McCutcheon  
 Engineer's Registration No. 650  
 File No. \_\_\_\_\_ Drawing No. \_\_\_\_\_  
 Date \_\_\_\_\_ Scale 1" = 500'

STATE OF WEST VIRGINIA  
 DEPARTMENT OF MINES  
 OIL AND GAS DIVISION  
 CHARLESTON

**WELL LOCATION MAP**  
 FILE NO. MON-175

+ Denotes location of well on United States Topographic Maps, scale 1 to 62,500, latitude and longitude lines being represented by border lines as shown.  
 - Denotes one inch spaces on border line of original tracing.