

LATITUDE 39° 35' 00"

+
0.97 W
0.28 S

00,00.00 LONGITUDE

7'5 OGIS topo location

7.5' loc _____ 15' loc _____
(calc.) _____

Company _____

Farm _____

Quad Riversville 7 1/2'

County Monongalia

District Grant

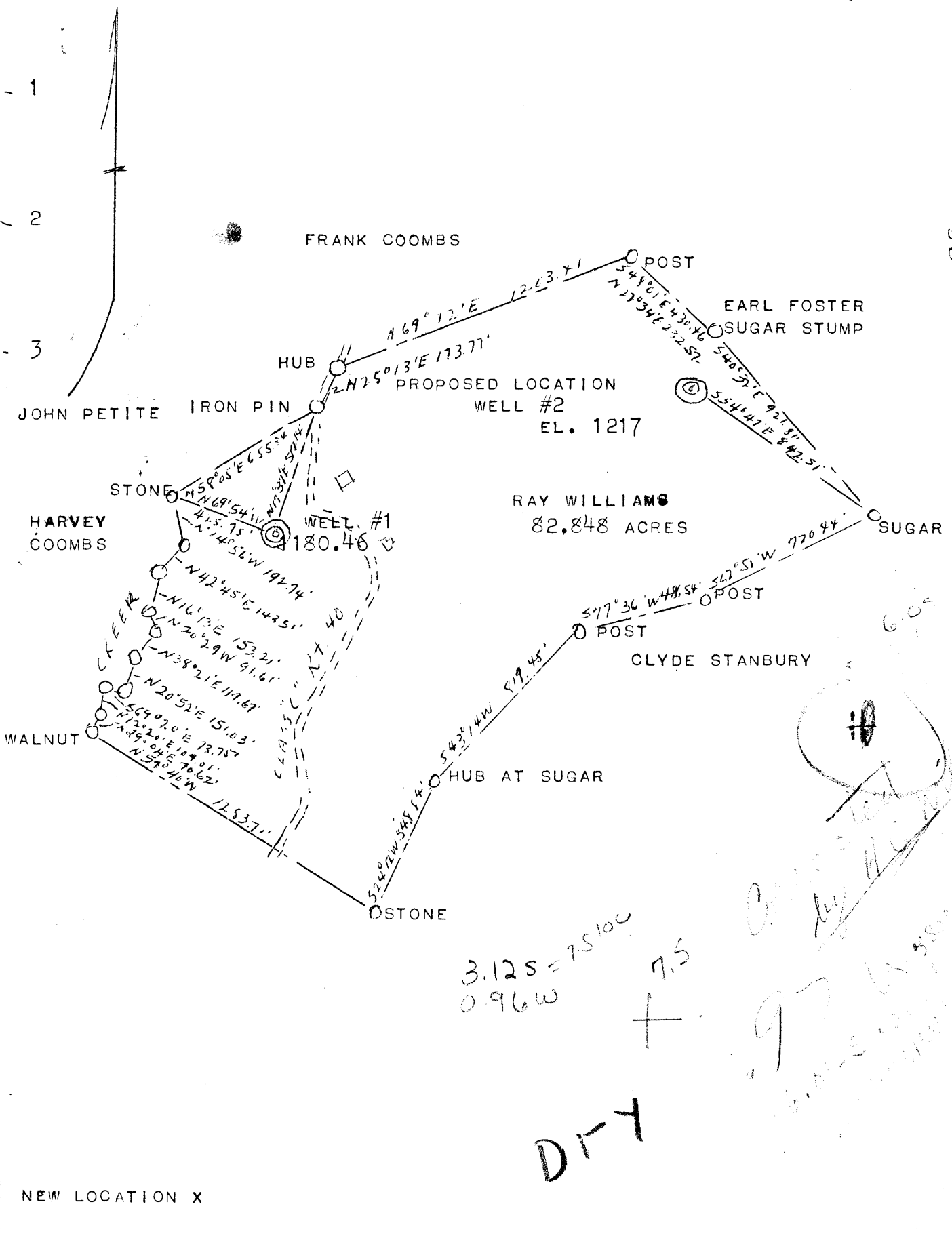
WELL LOCATION MAP

File No. 061-184

LATITUDE 39° 40'

39 37.30

LONGITUDE 80° 00'



| | |
|-----------------------------|-----------------------------|
| COMPANY | PARSHALL & CROW |
| ADDRESS | UNION TOWN, PA. |
| FARM | RAY WILLIAMS |
| TRACT | 1 ACRES 82.848 LEASE NO. 18 |
| WELL (FARM) NO. | 2 SERIAL NO. 2 |
| ELEVATION (SPIRIT LEVEL) | 1217.32 |
| QUADRANGLE | BLACKSVILLE |
| COUNTY | MONONGALIA DIST. GRANT |
| ENGINEER | RALPH E. BAKER |
| ENGINEER'S REGISTRATION NO. | 441 |
| FILE NO. | 2-19D-181 DWG. NO. 6500 |
| DATE | MAY 7, 1946 SCALE 1" = 500' |

STATE OF WEST VIRGINIA
 DEPARTMENT OF MINES
 OIL AND GAS DIVISION
 CHARLESTON

WELL LOCATION MAP
 FILE NO. MON 184

+ DENOTES LOCATION OF WELL ON U. S. TOPOGRAPHIC MAPS, SCALE 1 TO 62,500 LATITUDE AND LONGITUDE LINES BEING REPRESENTED BY BORDER LINES AS SHOWN.
 - DENOTES ONE INCH SPACES ON BORDER LINE OF ORIGINAL TRACING.

WEST VIRGINIA DEPARTMENT OF MINES
OIL & GAS DIVISION
W E L L R E C O R D

Permit No. Mon 184
Blacksville Quad.
Company
Address
Farm
Well No.
Location
District
Surface
Mineral
Commenced
Completed
Water

Parshall and Crow
Areford Bldg., Uniontown, Pa.
C. Ray Williams Acres 82.848
2 Elev. 1217.32

Grant Monongalia County

Ray Williams
May 27, 1946
June 26, 1946
770' H.F. of water 785'

--Well
CASING & TUBING

| | | | |
|--|-------|------|------|
| | 13 | 14 | 14 |
| | 10 | 155 | 155 |
| | 8½ | 774 | 774 |
| | 6 5/8 | 1207 | 1207 |

| | | |
|------------------------|------|------|
| Murphy Sand | 135 | 155 |
| Little Dunkard | 327 | 347 |
| Big Dunkard | 450 | 518 |
| Slate & Shells | 518 | 548 |
| Gas Sand | 600 | 642 |
| Slate & Shells | 642 | 755 |
| Salt Sand | 755 | 892 |
| Slate Dk | 945 | |
| Little Lime | 1130 | |
| Big Lime | 1163 | 1270 |
| Black Slate & Red Rock | 1270 | 1280 |
| Gas (smell) | 1345 | |
| Bottom Injun | 1380 | 1380 |
| Sand | 1462 | 1536 |
| Slate | 1536 | |
| Total Depth | | 1544 |