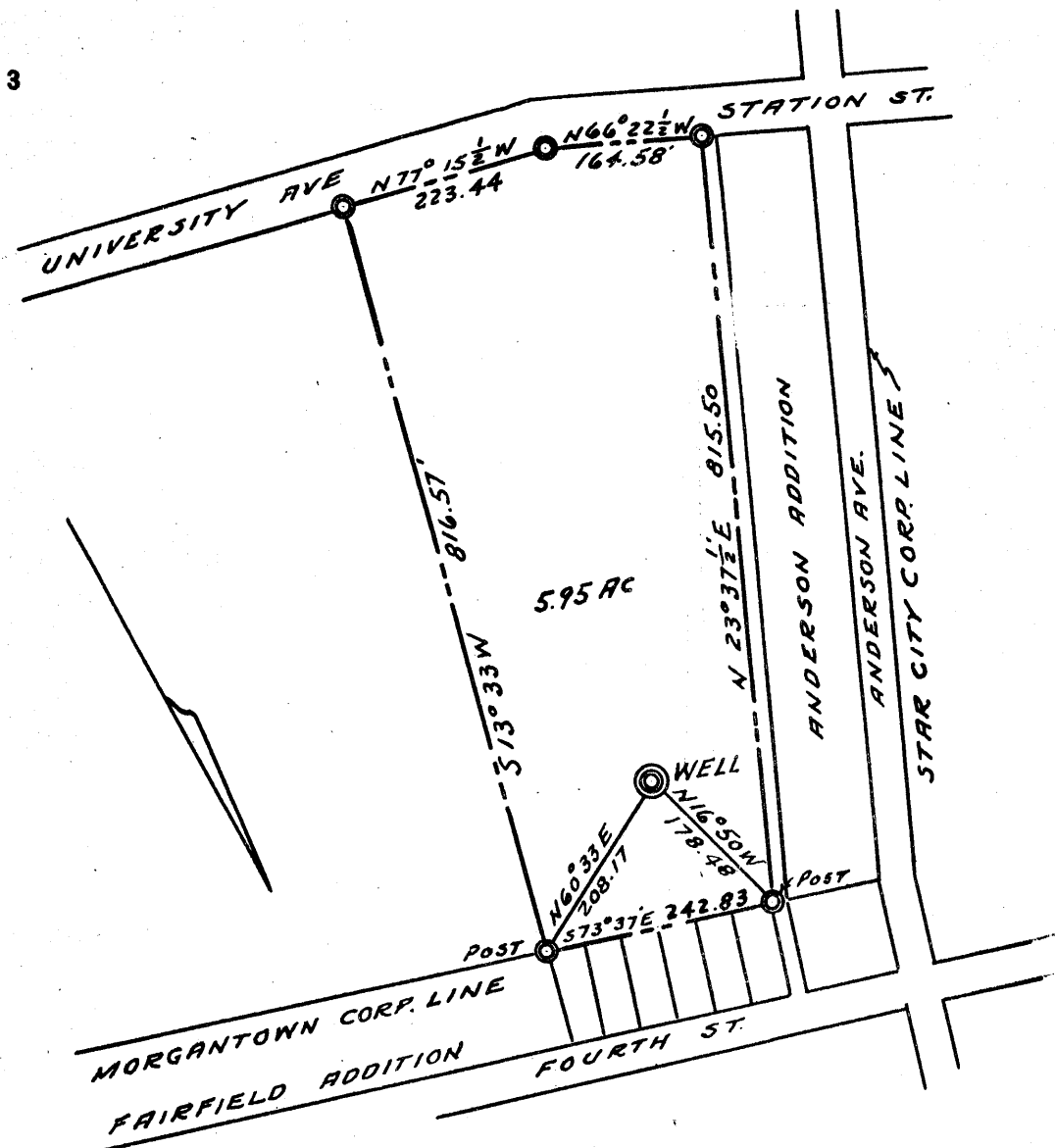


Latitude 39 ° 40 ' 1

Longitude 79 ° 55 ' 1

535
0.525
3.3
3.26-W



New Location...
 Drill Deeper.....
 Abandonment.....

M.R. DAVIS & R. EMMETT LYNCH
 Company _____
 Address STAR CITY W.V.A.
 Farm CALVIN SMITH
 Tract _____ Acres 5.95 Lease No. _____
 Well (Farm) No. ONE Serial No. _____
 Elevation (Spirit Level) 968.60
 Quadrangle MORGANTOWN
 County MONONGALIA District MORGAN
 Engineer RALPH E. BAKER
 Engineer's Registration No. 441
 File No. 2-170-205 Drawing No. 8516
 Date SEPT. 27-55 Scale 1" = 200'

STATE OF WEST VIRGINIA
 DEPARTMENT OF MINES
 OIL AND GAS DIVISION
 CHARLESTON

WELL LOCATION MAP
 FILE NO. MON-221

+ Denotes location of well on United States Topographic Maps, scale 1 to 62,500, latitude and longitude lines being represented by border lines as shown.
 - Denotes one inch spaces on border line of original tracing.

(068)



STATE OF WEST VIRGINIA
DEPARTMENT OF MINES
OIL AND GAS DIVISION

Morgantown

WELL RECORD

Permit No. MON-721

Oil or Gas Well Gas
(KIND)

Company R. EMMETT LYNCH & MR. DAVIS
Address STAR CITY, W.V.A.
Farm Calvin Smith Acres 5.75
Location (waters) Monongahela River
Well No. 1 Elev. 268.60
District Morgan County Monongalia
The surface of tract is owned in fee by Calvin Smith
Star City Address W.V.A.
Mineral rights are owned by Calvin Smith
Star City Address W.V.A.
Drilling commenced Oct 15, 1955
Drilling completed Nov 23, 1955
Date Shot None From To
With
Open Flow 1 1/10ths Water in one Inch
 /10ths Merc. in Inch
Volume 4 1/2 000 Cu. Ft.
Rock Pressure 425 lbs. 72 hrs.
Oil None bbls., 1st 24 hrs.
Fresh water 4 1/4 = 1 1/2 Barrels /10 feet 572 None feet
Salt water feet feet

Casing and Tubing	Used in Drilling	Left in Well	Packers
Size			
16			Kind of Packer <u>2X4 5/8</u>
13			<u>Spring Gas Rubber</u>
10	<u>43-10</u>	<u>43-10</u>	Size of <u> </u>
8 1/4	<u>401</u>	<u>401</u>	
6 3/4	<u>1178-7</u>	<u>1178-7</u>	Depth set <u>1372</u>
5 3/16			
3			Perf. top <u>1369</u>
2	<u>1391-2</u>	<u>1391-2</u>	Perf. bottom <u>1372</u>
Liners Used			Perf. top <u> </u>
			Perf. bottom <u> </u>

CASING CEMENTED SIZE No. Ft. Date
2" Tubing has 6 bag neat cement on top of packer
COAL WAS ENCOUNTERED AT 444 FEET 6 INCHES
624 FEET 12 INCHES FEET INCHES
FEET INCHES FEET INCHES

Formation	Color	Hard or Soft	Top	Bottom	Oil, Gas or Water	Depth Found	Remarks
Big Runhead Sand			370	472			
Coal			444	444 1/2			
Gas Sand			543	570			Hole full water 572
Coal			624	625			1-8" Barrels of water per hr at 624
1st Salt Sand			655	688			
2nd Salt Sand			710	871	1128		
3rd Salt Sand			875	915	969		
Maxon			970	1035	159		
Little Lime			1049	1070			
Big Lime			1128	1228			
Red Rock			1228	1230			
Gray Lime			1230	1238			
Engineer Sand		371	1288	1358			Gas 1 1/2 water in inches
Shale (Soft)			1358	1366			1336 to 1340
Total Depth			<u>1366</u>				

Fractured
12-14-55
72 M After

