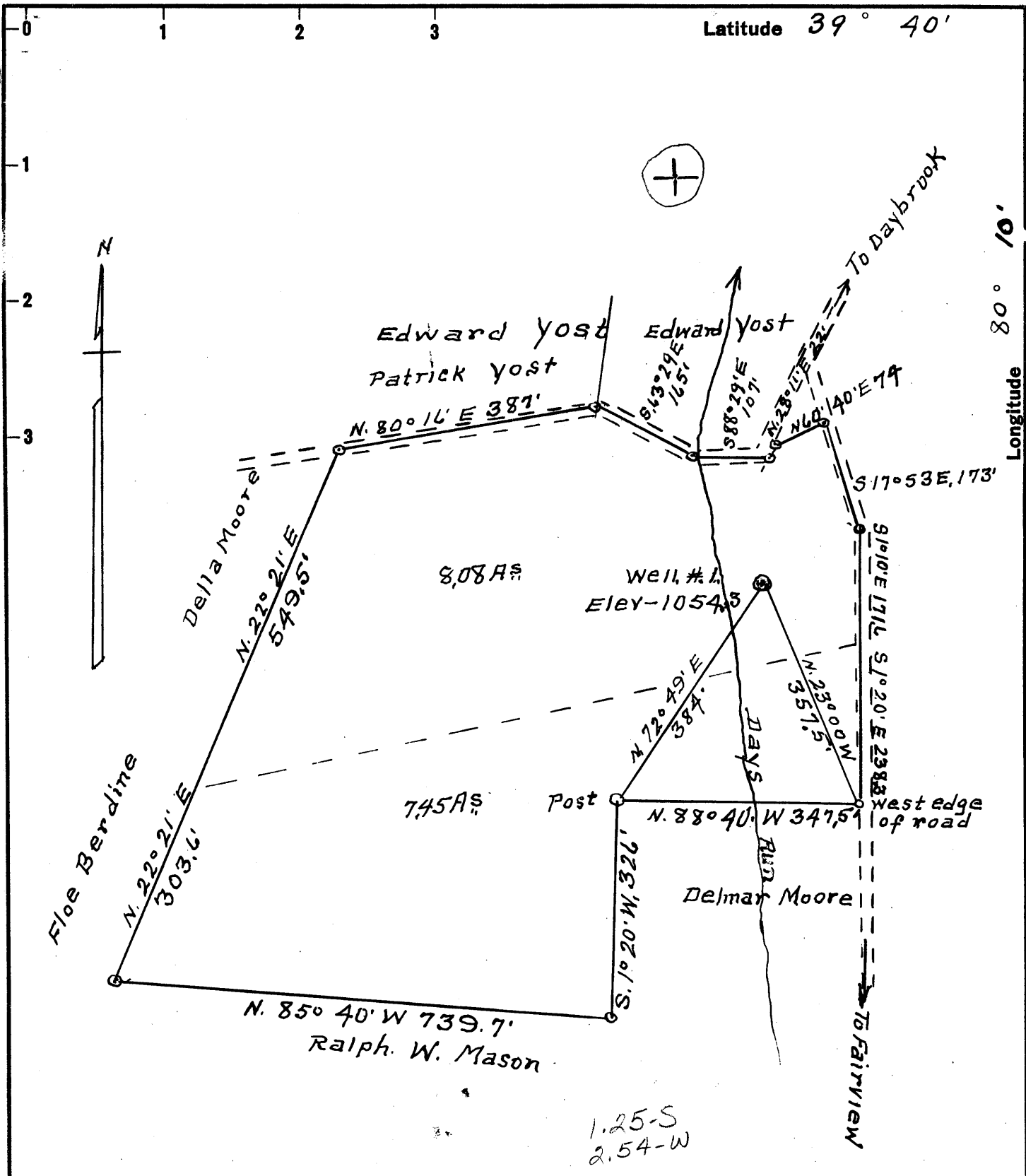


Latitude 39° 40'

Longitude 80° 10'



Surface = Edward J. Yost  
 R. # 2. Fairview, W. Va.  
 Coal = Little Kanawha Syndicate.  
 % B. G. Sampson, Eng. Co  
 P. O. Box 368, Fairmont W. Va.

New Location   
 Drill Deeper   
 Abandonment

Company Roddie & Duane Yost  
 Address R. # 2 Fairview W. Va.  
 Farm Edward Yost  
 Tract 1 Acres 15.58 Lease No. \_\_\_\_\_  
 Well (Farm) No. 1 Serial No. \_\_\_\_\_  
 Elevation (Spirit Level) 1054.3  
 Quadrangle Blacksville - WC  
 County Monongalia District Clay  
 Engineer A. L. Headley  
 Engineer's Registration No. 2021  
 File No. \_\_\_\_\_ Drawing No. \_\_\_\_\_  
 Date Nov. 20, 1959 Scale 1" = 200'

STATE OF WEST VIRGINIA  
 DEPARTMENT OF MINES  
 OIL AND GAS DIVISION  
 CHARLESTON

**WELL LOCATION MAP**  
 FILE NO. MON-242

+ Denotes location of well on United States Topographic Maps, scale 1 to 62,500, latitude and longitude lines being represented by border lines as shown.

- Denotes one inch spaces on border line of original tracing.

(066)



STATE OF WEST VIRGINIA  
DEPARTMENT OF MINES  
OIL AND GAS DIVISION

Quadrangle BLACKSVILLE  
MON-  
Permit No. 242

**WELL RECORD**

Oil or Gas Well Gas  
(KIND)

Company YOST & YOST, Inc.  
Address Fairview, W. Va. - Route # 2  
Farm Edward J. Yost Acres 15  
Location (waters) Daysrun  
Well No. 1 Elev. 1054.3  
District Clay County Monongalia  
The surface of tract is owned in fee by Edward J. Yost  
Address Fairview, W. Va. Route 2  
Mineral rights are owned by Edward J. Yost  
Address Fairview, W. Va. Route 2  
Drilling commenced January 1, 1960  
Drilling completed April 6, 1960  
Date Shot \_\_\_\_\_ From \_\_\_\_\_ To \_\_\_\_\_  
With \_\_\_\_\_  
Open Flow \_\_\_\_\_ /10ths Water in \_\_\_\_\_ Inch  
\_\_\_\_\_ /10ths Merc. in \_\_\_\_\_ Inch  
Volume \_\_\_\_\_ Cu. Ft.  
Rock Pressure \_\_\_\_\_ lbs. \_\_\_\_\_ hrs.  
Oil show of oil \_\_\_\_\_ bbls., 1st 24 hrs.  
WELL ACIDIZED no

Casing and Tubing	Used in Drilling	Left in Well	Packers
Size			Kind of Packer
16			
13			
10	666'	666'	Size of
8 1/4	1511'	1511'	
6 3/4	1918'	1918'	Depth set
5 3/16			
4	3114'	3114'	Perf. top
2			Perf. bottom
Liners Used			Perf. top
			Perf. bottom

WELL FRACTURED May 7, 1960  
RESULT AFTER TREATMENT 10,000 ft. Gas  
ROCK PRESSURE AFTER TREATMENT 400 lb. - 24 hours  
Fresh Water \_\_\_\_\_ Feet Salt Water \_\_\_\_\_ Feet

CASING CEMENTED 4 SIZE 300 No. Ft. May 1, 1960 Date  
Pittsburgh  
COAL WAS ENCOUNTERED AT 624 FEET INCHES  
631 FEET INCHES FEET INCHES  
FEET INCHES FEET INCHES  
Wbg. coal 275 - 276  
Mapletown coal 530 - 536

Formation	Color	Hard or Soft	Top	Bottom	Oil, Gas or Water	Depth	Remarks
Bluff sand	yellow	hard	210	255			
Salt sand	white	hard	1450	1670	water	1866	
Maxium	White	hard	1800	1827			
Big Lime	gray	hard	1866	1914			
Big Inclin	yellow	hard	1920	2252			
		soft	2040		oil		
			2045		oil & water		
Sand			2437	2645			
Sand			2659	2740			
Red Rock	Red	Soft	2740	2765			
Sand Gordon	Pink	hard	2784	2798			
Red Rock	Red	Soft	2818	2835			
5th Sand	gray	Hard	2862	2935			
Baird	White	Hard	3084	3089			
Sand			3228	3255			

