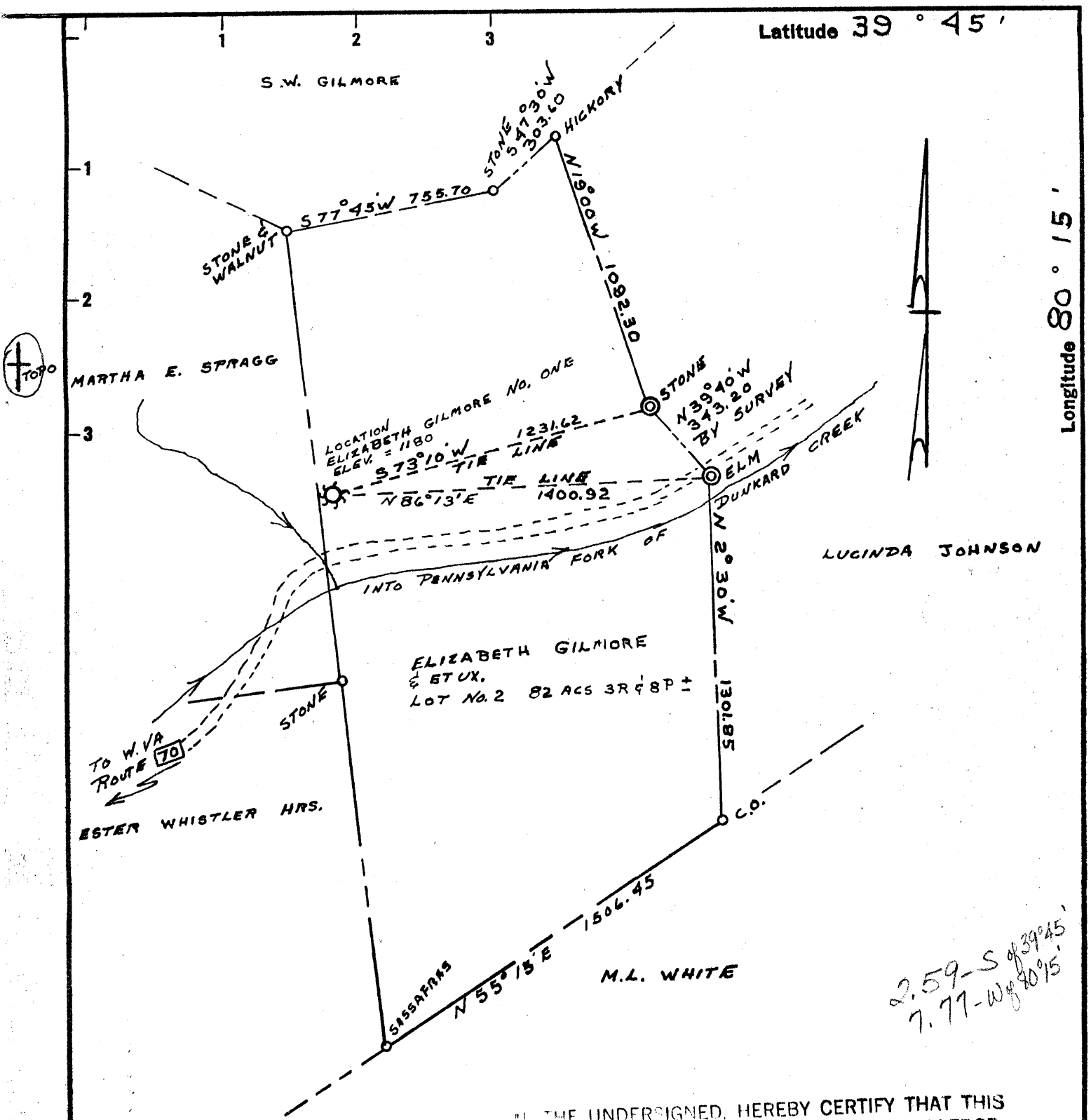


Latitude 39° 45'

Longitude 80° 15'



Corrected Company name: Originally shown "Big Sandy Drilling Company, Inc."

New Location
 Drill Deeper
 Abandonment issued 11-10-70

"THE UNDERSIGNED, HEREBY CERTIFY THAT THIS MAP IS CORRECT TO THE BEST OF MY KNOWLEDGE AND BELIEF AND SHOWS ALL THE INFORMATION REQUIRED BY PARAGRAPH 6 OF THE RULES AND REGULATIONS OF THE OIL AND GAS SECTION OF THE MINING LAWS OF WEST VIRGINIA."

By Paul Deane

*2.59-S of 39° 45'
7.77-W of 80° 15'*

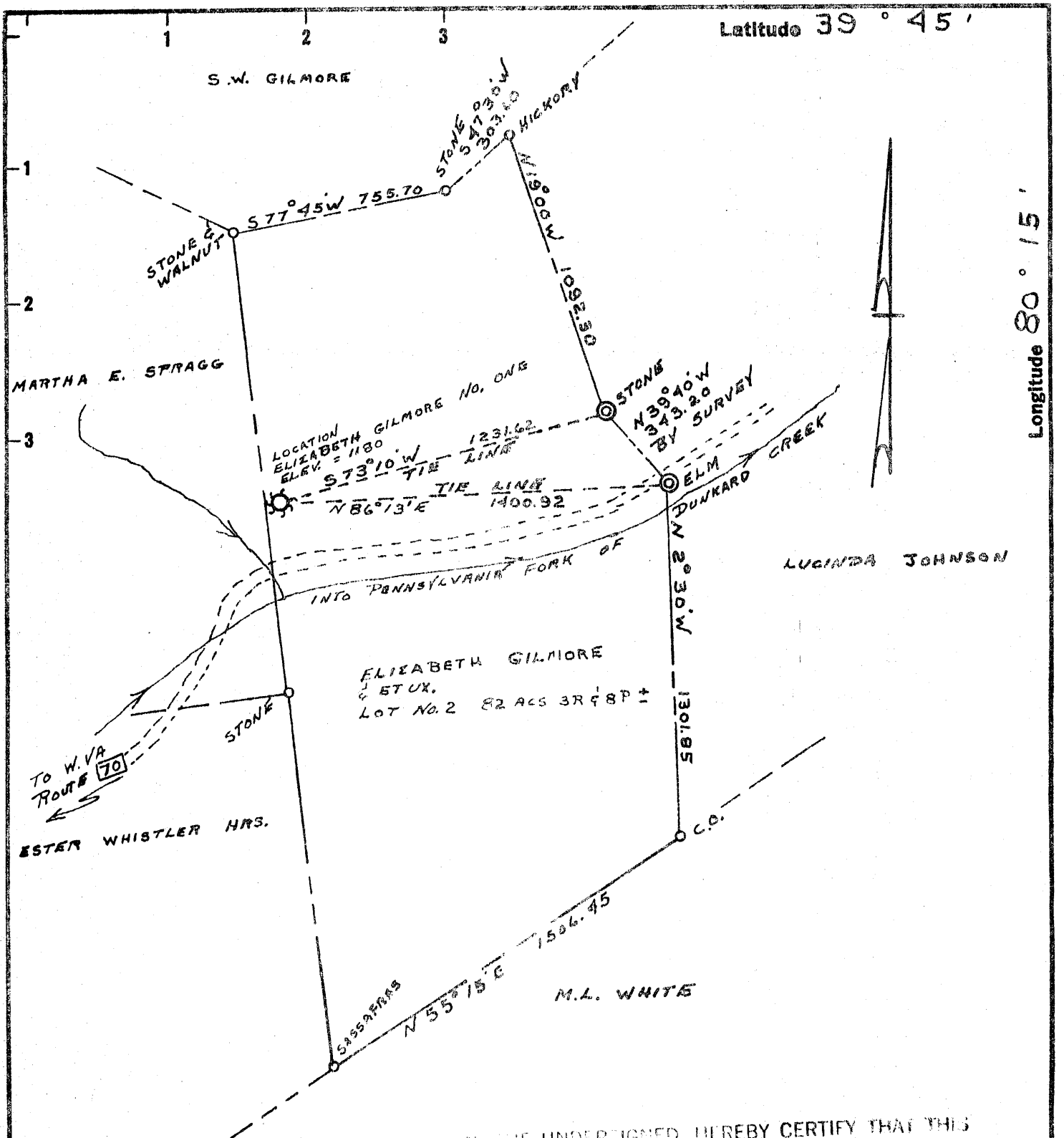
MIN. ERROR OF CLOSURE 1/40,000

~~EDWIN FOSTER BEAIR AND ASSOCIATES Big Sand Drilling Co., Inc.~~
 Address 288 SASCO HILL ROAD Box 502 - One Low, Fairfield, Connecticut 06424
 Farm ELIZABETH GILMORE & ETUX.
 Tract 2 Acres 82.3R18P Lease No. _____
 Well (Farm) No. ONE Serial No. _____
 Elevation (Spirit Level) 1180
 Quadrangle MANNINGTON N.W. NC
 County MONONGALIE District BATTELLE
 Engineer Paul Deane
 Engineer's Registration No. 1856
 File No. GWL 136-4 Drawing No. 63-73
 Date DECEMBER 14, 1963 Scale 1" = 500'

STATE OF WEST VIRGINIA
 DEPARTMENT OF MINES
 OIL AND GAS DIVISION
 CHARLESTON

WELL LOCATION MAP
 FILE NO. MON-269-P

+ Denotes location of well on United States Topographic Maps, scale 1 to 62,500, latitude and longitude lines being represented by border lines as shown.
 - Denotes one inch spaces on border line of original tracing.



"I, THE UNDERSIGNED, HEREBY CERTIFY THAT THIS MAP IS CORRECT TO THE BEST OF MY KNOWLEDGE AND BELIEF AND SHOWS ALL THE INFORMATION REQUIRED BY THE ACTS AND REGULATIONS OF THE OIL AND GAS SECTION OF THE MINING LAWS OF WEST VIRGINIA."

By Paul G. Dean

New Location
 Drill Deeper
 Abandonment Issued 11-10-70

MIN. ERROR OF CLOSURE 1/40,000

Company EDWIN FOSTER DEAN AND ASSOCIATES Big Sandy Drilling Co., Inc.
 Address 288 SASCO HILL ROAD Box 502 - Crane Lw, FAIRFIELD, CONNECTICUT 06424
 Farm ELIZABETH GILMORE & ET UX.
 Tract 2 Acres 82.318 Please No. _____
 Well (Farm) No. ONE Serial No. _____
 Elevation (Spirit Level) 1180
 Quadrangle MANNINGTON N.H. NC
 County MONONGALIA District BATTELLE
 Engineer Paul G. Dean
 Engineer's Registration No. 1856
 File No. GWL 136-4 Drawing No. 63-73
 Date DECEMBER 14, 1963 Scale 1" = 500'

STATE OF WEST VIRGINIA
 DEPARTMENT OF MINES
 OIL AND GAS DIVISION
 CHARLESTON

WELL LOCATION MAP
 FILE NO. Mon-269-P

+ Denotes location of well on United States Topographic Maps, scale 1 to 62,500, latitude and longitude lines being represented by border lines as shown.
 - Denotes one inch spaces on border line of original tracing.



STATE OF WEST VIRGINIA
DEPARTMENT OF MINES
OIL AND GAS DIVISION

Rotary
Spudder
Cable Tools
Storage

Quadrangle Mannington

Permit No. MON-269

WELL RECORD

Oil or Gas Well Gas
(KIND)

Company Edwin Foster Blair & Associates
Address 288 Sasco Hill Road, Fairfield, Conn.
Farm Elizabeth Gilmore ET UX Acres 82
Location (waters) _____
Well No. 1. Elev. 1180'
District Battelee County Monongalia
The surface of tract is owned in fee by _____
Address _____
Mineral rights are owned by E. Gilmore ET UX
Address _____
Drilling commenced January 24, 1964
Drilling completed April 29, 1964
Date Shot _____ From _____ To _____
With _____
Open Flow 24 /10ths Water in _____ 2 _____ Inch
_____ /10ths Merc. in _____ Inch
Volume _____ Cu. Ft.
Rock Pressure 485 lbs. 24 hrs.
Oil _____ bbls., 1st 24 hrs.
WELL ACIDIZED _____

Casing and Tubing	Used in Drilling	Left in Well	Packers
Size			Kind of Packer _____
16			
13	20	20	
10	104	-	Size of _____
8 1/4	1015	1015	
6 1/2	7" 1872	1872	Depth set _____
5 3/16	4 1/2" 3450	3450	
3			Perf. top _____
2		3040	Perf. bottom _____
Liners Used			Perf. top _____
			Perf. bottom _____

CASING CEMENTED 8" SIZE 1015 No. Ft. 2/10/64 Date
4 1/2" @ 3450' w/250 sks. 5/6/64
COAL WAS ENCOUNTERED AT 636' to 642' INCHES
870' to 877' FEET 977' to 985' INCHES
FEET INCHES FEET INCHES
FEET INCHES FEET INCHES

WELL FRACTURED 5/29/64 w/ 50,00 lbs 20/40 in 32,000 gal water @ 24.2 BPM.
B.D. 3700 avg. treat press. 3350.

RESULT AFTER TREATMENT 210 mcf
ROCK PRESSURE AFTER TREATMENT 500 in 24 hr
Fresh Water 15 @ 120' Feet 1000' Salt Water 1868' Feet

Formation	Color	Hard or Soft	Top	Bottom	Oil, Gas or Water	Depth	Remarks
Soil		soft	0	10			
Slate	Grey	med	10	45	Water	15	Fresh
Sand	Brown	med	45	55			
Slate	Dark	soft	55	69			
Lime	Dark	hard	69	71			
Sl.&sh.	Grey	med	71	85			
Red Rock	Red	med	85	170	Water	120	Fresh
Sl.&sh.	Grey	med	170	390			
Red Rock	Red	med	390	400			
Slate	Dark	med	400	472			
Sand	Light	hard	472	494			
Shale	Dark	med	494	525			
Sl.&sh.	Grey	med	525	550			
Lime	Dark	hard	550	575			
Slate	Grey	med	575	585			
Shale	Dark	med	585	590			
Lime	Dark	gritty	590	636			
Coal	Black	med	636	642			
Lime	Dark	hard	642	683			
Slate	Dark	med	683	745			
Lime	Grey	hard	745	870			
Coal	Black	soft	870	877			
Slate	Grey	med	877	900			
Lime	Dark	hard	900	978			
Coal	Black	soft	977	985			
Sand	Light	hard	985	1000			
Slate	Dark	med	1000	1061			
Red Rock	Red	med	1061	1095			



Formation	Color	Hard or Soft	Top 8	Bottom	Oil, Gas or Water	Depth Found	Remarks
Slate	Dark	med	1095	1113			
Red Rock	Red	med	1113	1150			
Slate	Dark	med	1150	1165			
Red Rock	Red (med)	med	1165	1225			
Lime	Dark	hard	1225	1232			
Sl.&sh.	Grey	med	1232	1257			
Red Rock	Red	med	1257	1300	2162		
Slate	Dark	med	1300	1336			
Sl.&sh.	Grey	med	1336	1444			
Lime	Dark	hard	1444	1500			
Sand	Brown	hard	1500	1555			
Slate	Dark	med	1555	1574			
Sand	Dark	hard	1574	1604			
Slate	Grey	med	1604	1677			
Sd.&lm.	Dark	hard	1677	1775			
Slate	Black	med	1775	1790			
Sd.&lm.	Dark	hard	1790	1895			
Slate	Dark	med	1895	1946			
Lime	Grey	hard	1946	1953			
Sd.&sl.	Dark	med	1953	2079			
Lime	Dark	hard	2079	2154			Little Lime.
Slate	Dark	soft	2154	2162			Pencil Cave.
Lime	Dark	hard	2162	2259			Big Lime.
Sand	Dark	hard	2259	2518			Injun & Squaw.
Ln.&sh.	Dark	hard	2518	2796			Show of gas @ 2338'
Sand	Light	hard	2796	2810			" " " 2360'
Sl.&sh.	Grey	med	2810	2930			
Sand	Light	hard	2930	2942			
Ln.&sd.	Grey	hard	2942	3024			
Sand	Dark	hard	3024	3054			Gas show @ 3032'
Ln.&sl.	Grey	med	3054	3085			
Sand	Light	hard	3085	3105			
Slate	Dark	med	3105	3120			
Sand	Brown	hard	3120	3186			4th Sand.
Slate	Dark	med	3186	3215			
Sand	Dark	hard	3215	3234			5th Sand.
Sl.&lm.	Grey	med	3234	3365			
Sand	Dark	hard	3365	3370			Bayard.
Sl.&sh.	Grey	med	3370	3501			T.D. Logger.

Date June 12, 19 64

APPROVED Edwin Foster Blair & Associates

By *William H. Dennis*
W. Va. Rep. (Title)