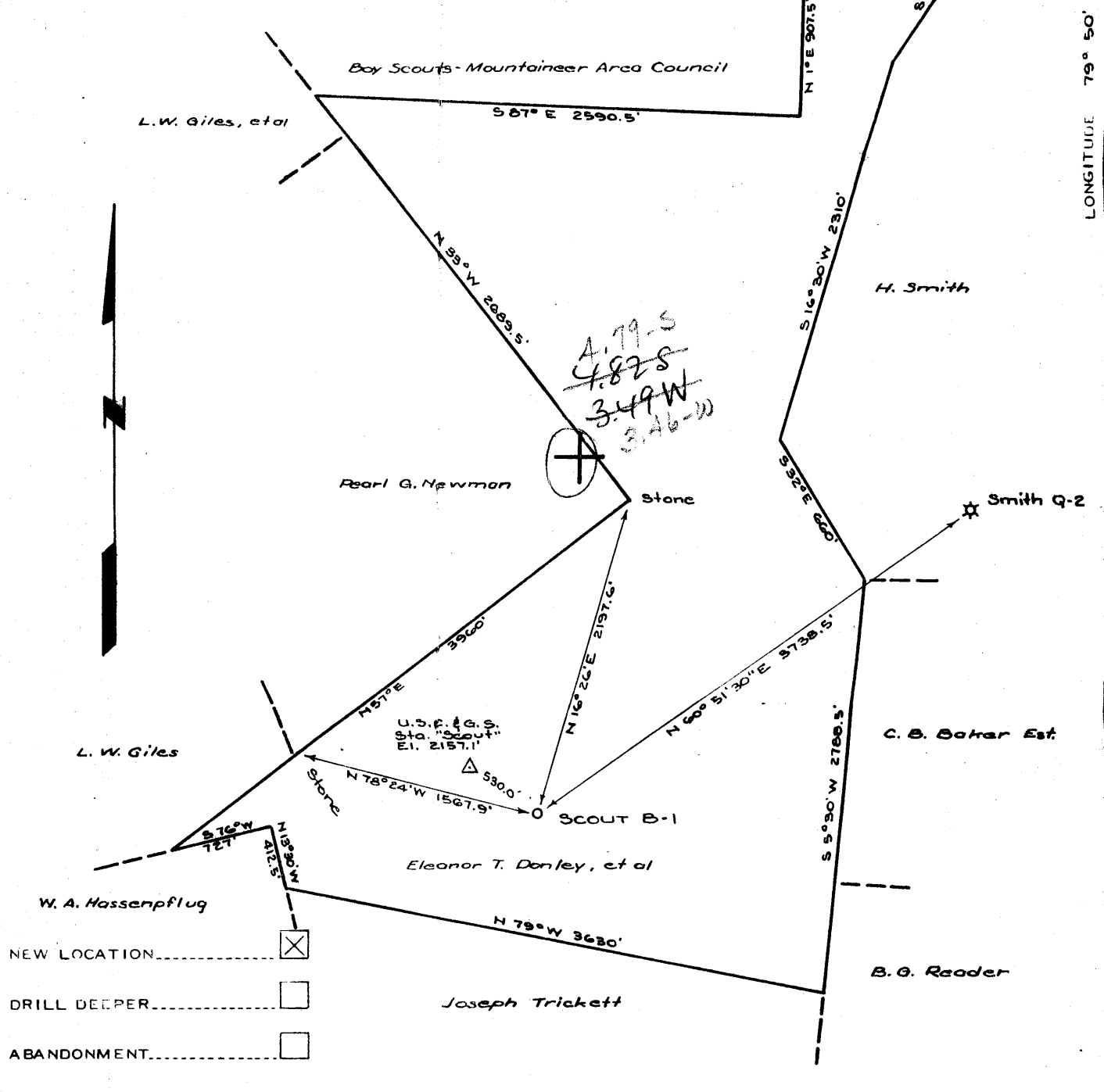


LATITUDE 39° 35'

8 22 66

"I, the undersigned, hereby certify that this map is correct to the best of my knowledge and belief and shows all of the information required by Paragraph 5 of the rules and regulations of the Oil and Gas Section of the mining laws of West Virginia."

Louis P. Sumpter
LOUIS P. SUMPTER
Oklahoma Reg. No. 2724



- NEW LOCATION.....
- DRILL DEEPER.....
- ABANDONMENT.....

COMPANY PHILLIPS PETROLEUM COMPANY
 ADDRESS BARTLESVILLE, OKLAHOMA
 FARM ELEANOR T. DONLEY, ET AL
 TRACT _____ ACRES 344 LEASE NO. 108630
 WELL (FARM) NO. SCOUT B-1 SERIAL NO. _____
 ELEVATION (SPIRIT LEVEL) 2129.7'
 QUADRANGLE MORGANTOWN - SC
 COUNTY MONROCALIA DISTRICT CLINTON
 ENGINEER *Louis P. Sumpter*
 ENGINEER'S REGISTRATION NO. 2724 - OKLAHOMA
 FILE NO. _____ DRAWING NO. _____
 DATE JULY 29, 1966 SCALE 1" = 1000'

STATE OF WEST VIRGINIA
 DEPARTMENT OF MINES
 OIL AND GAS DIVISION
 CHARLESTON

WELL LOCATION MAP
 FILE NO. Mon-300

+ DENOTES LOCATION OF WELL ON UNITED STATES TOPOGRAPHIC MAPS, SCALE 1 TO 62,500. LATITUDE AND LONGITUDE LINES BEING REPRESENTED BY BORDER LINES AS SHOWN
 - DENOTES ONE INCH SPACES ON BORDER LINE OF ORIGINAL TRACING.

Deep Well

Form OG-10



STATE OF WEST VIRGINIA
DEPARTMENT OF MINES
OIL AND GAS DIVISION

Rotary
Spudder
Cable Tools
Storage

Quadrangle Morgantown
Permit No. MON-300

WELL RECORD

Oil or Gas Well Gas
(KIND)

Company Phillips Petroleum
Address Bartlesville, Oklahoma
Farm Scout "B" Acres 344
Location (waters) *See below
Well No. 1 D.F. 2111.8' Elev. 2129.7'
District Clinton County Monongalia
The surface of tract is owned in fee by Robert T. Donley, et al, C/O R. T. Donley
Address 174 Chancery Row, Morgantown, West Virginia
Mineral rights are owned by Same

Casing and Tubing	Used in Drilling	Left in Well	Packers
Size			Kind of Packer
16	Set @:		
13 13 3/8"	48'	31.90'	(145 Sax) by Halli.
10 9 5/8"	1024.19'	1009.69'	(340 Sax) by Halli
8 1/4 1 1/2"	8243.67'	8230.87'	(200 Sax) by Halli.
6 5/8"			Depth set
5 3/16"			
4 1/2"			
3"			Perf. top **See below
2"			Perf. bottom
Liners Used			Perf. top
			Perf. bottom

Drilling commenced August 30, 1966
Drilling completed September 22, 1966
Date Shot None From To
With
Open Flow /10ths Water in Inch
 /10ths Merc. in Inch
Volume 1,116,000 Cu. Ft.
Rock Pressure lbs. hrs.
Oil None bbls., 1st 24 hrs.
WELL ACIDIZED (DETAILS) Not acidized.

Attach copy of cementing record.
CASING CEMENTED 4 1/2" SIZE 8243.67' No. Ft. 9/18/66 Date
Amount of cement used (bags) 200 sax
Name of Service Co. Halliburton
COAL WAS ENCOUNTERED AT 65' to 67' FEET INCHES
FEET INCHES FEET INCHES
FEET INCHES FEET INCHES

WELL FRACTURED (DETAILS) 9/21/66 Dowell fracture treated Onondaga Chert thru perf. in 4 1/2" csg w/ 56,600 gal. of 3% gelled acid & allied additives - avg. inj. press. 4609# - max. press. 5000# -
I.S.I.P. 3400#
RESULT AFTER TREATMENT (Initial open Flow or bbls.) Four-point pot'l test, 11/3/66, calculated open flow 1,116 MCF/day.
ROCK PRESSURE AFTER TREATMENT 3200# HOURS Ten minutes.
Fresh Water Hit fresh water @ 70' & 1265' *** Salt Water Feet
Producing Sand Onondaga Chert Depth 8250' - Plugged back to 8210'

Formation	Color	Hard or Soft	Top	Bottom	Oil, Gas or Water	Depth	Remarks
Surface Soil & Sand Stone			0'	48'	**PERFORATION RECORD:		
Sand Rock			48'	170'	ONONDAGA CHERT:		
Red Rock & Shale Streaks			170'	635'	7914' to 7924'	- 10	53" Dia. holes
Sand			635'	1310'	7927' to 7929'	- 2	Do
Red Rock			1310'	1495'	7932' to 7934'	- 2	Do
Sand & Shale			1495'	2345'	7938' to 7940'	- 2	Do
Sandy Shale			2345'	3330'	7946' to 7950'	- 4	Do
Shale			3330'	5640'	7962' to 7965'	- 3	Do
Shale & Sandy Shale			5640'	6115'	7972' to 7976'	- 4	Do
Shale			6115'	6760'	7979' to 7982'	- 3	Do
Shale & Lime			6760'	7358'	7985' to 7990'	- 5	Do
Tully Lime			7358'	7777'	7994' to 8003'	- 9	Do
Marcellus Shale			7777'	7897'	8020' to 8029'	- 9	Do
Onondaga Lime			7897'	7912'	8058' to 8060'	- 2	Do
Onondaga Chert			7912'	8122'	8063' to 8068'	- 5	Do
Oriskany Sand			8122'	8187'			
Helderberg Lime			8187'	8250'			

Plugged back f/ 8250' to 8210'
*Location f/ line four above: Staked location f/ triangle station 530' Southeast. TRIANGLE STATION: U.S.C. & G.S. STA. "SCOUT."
***9/6/66 Halli. squeezed water sand 1250' to 1335' w/ 200 gal. of Hydro Lock PWG gel in formation - min. pre 600# - max. press. 1600#.

