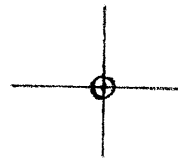


LATITUDE 39° 46' 00"

LONGITUDE



7'5 OGIS topo location

7.5' loc 2795 15' loc \_\_\_\_\_  
                  1.19W (calc.) \_\_\_\_\_

Company \_\_\_\_\_

Farm \_\_\_\_\_

Quad BLACKSVILLE 7 1/2'

County MONONGALIA

District CLAY

Class 1160 ± (topo)

WELL LOCATION MAP

File No. 061-0600

# DIAGRAM OF CHANGES

PIPE-LAID, MAKE IN RED. TAKEN UP IN BLACK CROSSED WITH RED. LESS THAN 2 FEET OF PIPE SHOULD NOT BE SHOWN

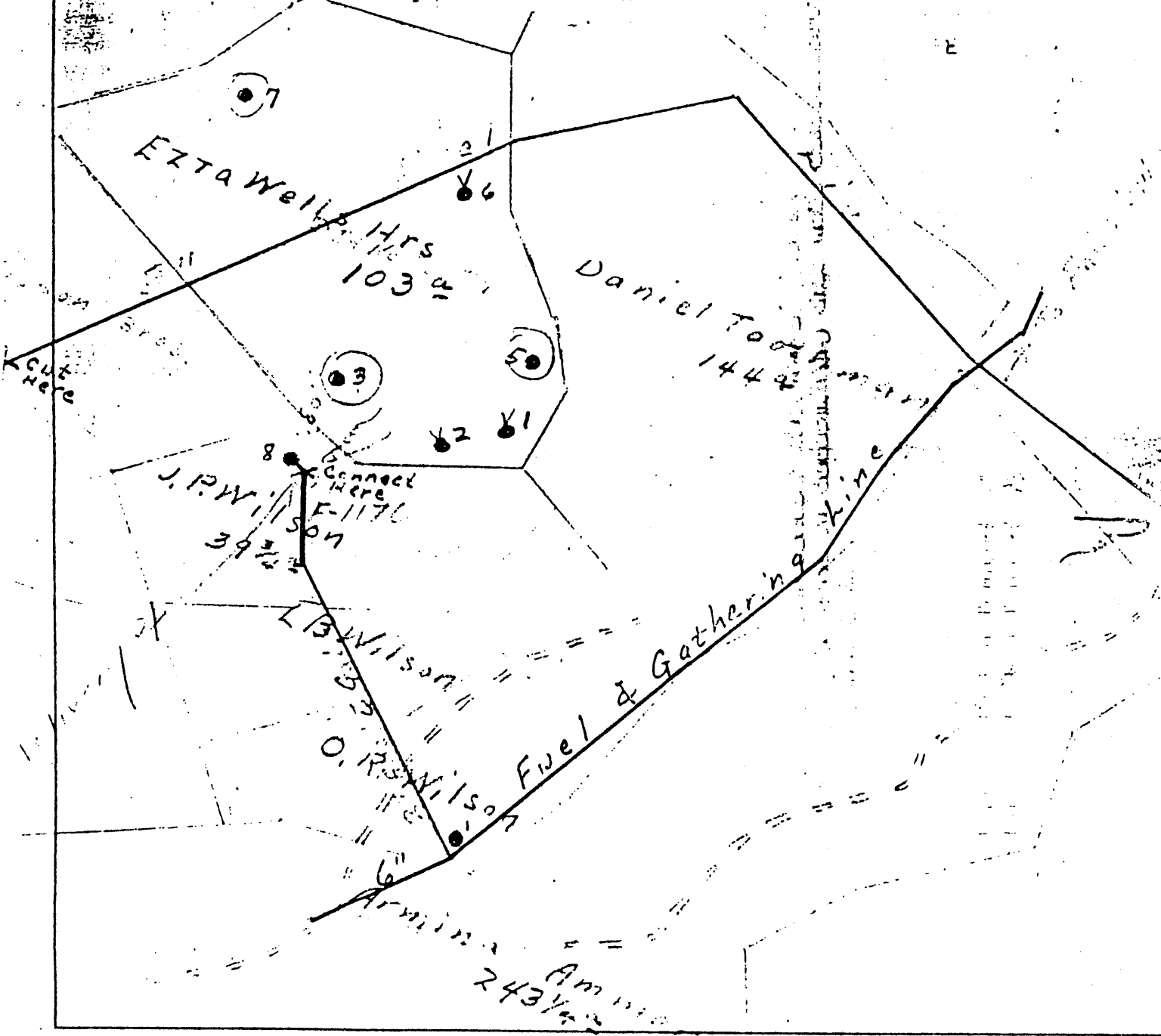
LEASE OR RIGHT OF WAY NO. \_\_\_\_\_ COUNTY, Monongalia DISTRICT, Clay SQUARES. N. 1  
DATE OF CHANGE \_\_\_\_\_ FARM NAME, Ezra Wells Hrs. LINE NO. Map

	2 INCH	3 INCH	4 INCH	5 INCH	6 INCH	7 INCH	8 INCH
TOTAL PIPE LAID							
PIPE TAKEN UP							
PIPE ABAND.							
TOTAL PIPE UP							

PIPE TAKEN UP PUT INTO \_\_\_\_\_ STOCK \_\_\_\_\_  
 PIPE LAID TAKEN FROM \_\_\_\_\_ STOCK, OLD OR NEW \_\_\_\_\_  
 PIPE UNABLE TO RECOVER \_\_\_\_\_ STOCK \_\_\_\_\_

NAME AND USE OF LINE \_\_\_\_\_  
 REMARKS: Plat showing location of casinghead gas offered for purchase  
by Bayard Oil Company (George Burline) on Ezra Wells Hrs. Farm  
103 acres wells Nos. 3, 5, 7.

Gas would feed into our 2" Fuel & Gathering Line. Point of Contact  
near Mr. Wilson Hrs. well #8, thence into 6" Fuel & Gathering Line  
to Fairview Compressor Station. SHOWING LINES



SW Part of BLACKSVILLE 7 1/2' Boro

061-600



061-600

STATE OF WEST VIRGINIA  
DEPARTMENT OF MINES  
**Oil and Gas Division**  
**WELL RECORD**

Rotary \_\_\_\_\_ Oil \_\_\_\_\_  
Cable \_\_\_\_\_ Gas \_\_\_\_\_  
Recycling \_\_\_\_\_ Comb. \_\_\_\_\_  
Water Flood \_\_\_\_\_ Storage \_\_\_\_\_  
Disposal \_\_\_\_\_ (Kind) \_\_\_\_\_

Quadrangle Mannington

Permit No. \_\_\_\_\_

Company Ira Oil & Gas Company  
Address Route 1 Box 29-C, Fairview, WV 26570  
Farm Clark & Stephen Tennant Acres 103  
Location (waters) Branch of Bennefield  
Well No. 3 Elev. N/A  
District Clay County Monongalia  
The surface of tract is owned in fee by \_\_\_\_\_

Casing and Tubing	Used in Drilling	Left in Well	Cement fill up Cu. ft. (Sks.)
Size 20-16			
Cond. 13-10"	SEE INFORMATION BELOW		
9 5/8			
8 5/8			
7			
5 1/2			
1/2			
3			
2			
Liners Used			

Address \_\_\_\_\_  
Mineral rights are owned by \_\_\_\_\_  
Address \_\_\_\_\_  
Drilling Commenced Actual Drilling Date not known  
Drilling Completed Prior to 1900  
Initial open flow \_\_\_\_\_ cu. ft. \_\_\_\_\_ bbls.  
Final production \_\_\_\_\_ cu. ft. per day \_\_\_\_\_ bbls.  
Well open \_\_\_\_\_ hrs. before test \_\_\_\_\_ RP.  
Well treatment details: \_\_\_\_\_

Attach copy of cementing record.

Not Known

Coal was encountered at \_\_\_\_\_ Feet \_\_\_\_\_ Inches  
Fresh water \_\_\_\_\_ Feet \_\_\_\_\_ Salt Water \_\_\_\_\_ Feet \_\_\_\_\_  
Producing Sand \_\_\_\_\_ Depth 3144

Formation	Color	Hard or Soft	Top Feet	Bottom Feet	Oil, Gas or Water	* Remarks
<p>This well drilled sometime around the turn of the century. Well records and actual drilling records are not available.</p> <p>Well depth is estimated to be 3160' with oil pay at 3144'; 2153' of 5" casing.</p>						