

**Latitude**

.255  
.03w

**Longitude**

**Topo Location**

**7.5' Loc.** \_\_\_\_\_ **15' Loc.** \_\_\_\_\_  
\_\_\_\_\_ (calc.) \_\_\_\_\_

**Company** Mark & Harry Eddy

**Farm** consolidation coal Co #1

**15' Quad** \_\_\_\_\_  
(sec.)

**7.5' Quad** Mammington

**District** Battello

**WELL LOCATION PLAT**

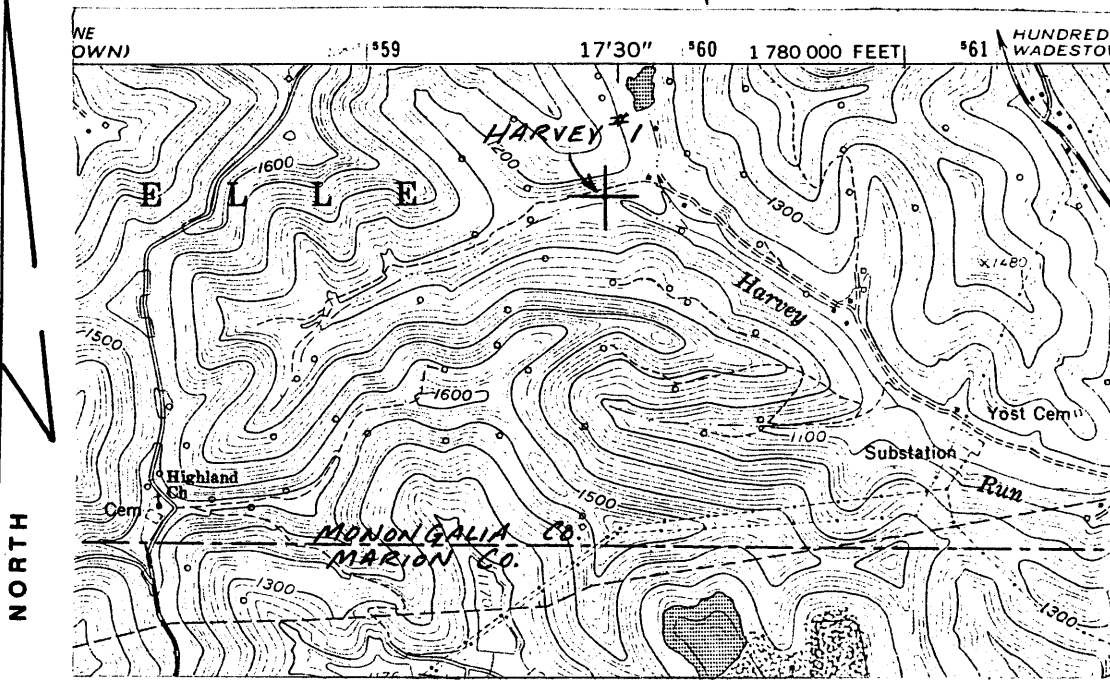
**County** Obi **Permit** 996p

INSTRUCTIONS

LATITUDE 39° 37' 30"

1) Attach a photo copy of the location of the well on a 7.5 minute Quadrangle with the corresponding Longitude and Latitude.  
 2) Designate the location of the well with the symbol(+).

0.451  
1.15



LONGITUDE 80° 17' 30" 75100  
1390

I, the undersigned, hereby certify that this plat is correct to the best of my knowledge and belief.

SIGNED Mark Eddy  
 TITLE Harry Eddy

DATE NOVEMBER 6, 1989  
 OPERATORS WELL NO. HARVEY #1  
 API WELL NO. 061-0996

STATE OF WEST VIRGINIA  
 DEPARTMENT OF ENERGY  
 OIL AND GAS DIVISION

# 110 in 1912  
 Co Rpt  
 70219

WELL TYPE: OIL  GAS  LIQUID INJECTION  WASTE DISPOSAL   
 (IF "GAS" PRODUCTION  STORAGE  DEEP  SHALLOW

LOCATION: ELEVATION 1120' WATER SHED MONONGAHELA RIVER  
 DISTRICT BATTELLE COUNTY MONONGALIA  
 QUADRANGLE MANNINGTON, WV

SURFACE OWNER CONSOLIDATION COAL CO. ACREAGE 140.00 AC.  
 OIL & GAS ROYALTY OWNER MARK & HARRY EDDY LEASE ACREAGE 140.00 AC.  
 LEASE NO. \_\_\_\_\_

PRODUCING FORMATION BIG INJUN TOTAL DEPTH 1800-2400'

WELL OPERATOR MARK & HARRY EDDY DESIGNATED AGENT -

ADDRESS ROUTE 1, BOX 43 ADDRESS -

CORE, WV 26529

11792

Battelle District, Monongalia County, W. Va.

Located 1.7 mi. N. 70° E. of Galletta.

Initial production, 2200 bbls. daily from 4th Sand, when completed in 1897, and was still making 8 bbls. daily in August, 1911.

Flat Run pool.

Elevation, 1120' B.

South Penn Oil Co.

	Top.	Bottom.
Pittsburgh Coal	780	
Big Injun Sand	2080 -	2260
Slate and shells	2260 -	2285
Squaw Sand	2283 -	2315
Slate and shells	2315 -	2500
Shelly Sand	2500 -	2520
Slate	2520 -	2530
Sand	2530 -	2555
Slate, sand and shells	2555 -	2625
50-Ft. Sand	2625 -	2660
Slate	2660 -	2675
Sand	2675 -	2725
Red sand	2725 -	2730
Slate, sand and shells	2730 -	2770
Red sand	2770 -	2785
Slate	2785 -	2790
Sand	2790 -	2820
Red rock	2820 -	2835
Sand	2835 -	2885
Shells and slate	2885 -	2905
Red rock	2905 -	2925
Stray Sand	2925 -	2945
Slate and shells	2945 -	2995
Gordon Sand (to bottom)	2995 -	3012

(1st pay, 2005'; 2nd pay, 3010')

Battelle District, Monongalia County, W. Va.

By South Penn Oil Co.

On Flat Run.

Elevation, 1120' B.

Located 1.7 mi. N. 70° E. of Galletin.

Initial production, 2200 bbls. daily from 4th Sand, when completed in 1897 and was still making 8 bbls. daily in August, 1911. (MMT Rpt., p. 453).

	Top.	Bottom.
Pittsburgh Coal	780	
Big Injun Sand	2080	- 2260
Slate and shells	2285	
Squaw Sand	2315	
Slate and shells	2500	
Shelly sand	2520	
Slate	2530	
Sand	2555	
Slate, sand, and shells	2625	
50-Ft. Sand	2660	
Slate	2675	
Sand	2725	
Red sand	2730	
Slate, sand, and shells	2770	
Red sand	2785	
Slate	2790	
Sand	2820	
Red rock	2835	
Sand	2885	
Shells and slate	2905	
Red rock	2925	
Stray Sand	2945	
Slate and shells	2995	
Gordon Sand (1st pay, 3005'; 2nd, 3010')	2995	
Total depth		3012

(NOTE: Figures below Big Injun to Gordon may be "bottoms" instead of "tops") (See MMT Rpt) MCT