

610346P

WW-7
8-30-06



West Virginia Department of Environmental Protection
Office of Oil and Gas

WELL LOCATION FORM: GPS

API: 47-061-01346-C WELL NO.: 9L1

FARM NAME: Terry Eddy

RESPONSIBLE PARTY NAME: Lonnie Atkins

COUNTY: Monongalia DISTRICT: Clay

QUADRANGLE: Blacksville

SURFACE OWNER: Patricia A Bunner

ROYALTY OWNER: Patricia A Bunner

UTM GPS NORTHING: 4391080.54

UTM GPS EASTING: 568276.76 GPS ELEVATION: 450 (1440')

The Responsible Party named above has chosen to submit GPS coordinates in lieu of preparing a new well location plat for a plugging permit or assigned API number on the above well. The Office of Oil and Gas will not accept GPS coordinates that do not meet the following requirements:

- 1. Datum: NAD 1983, Zone: 17 North, Coordinate Units: meters, Altitude: height above mean sea level (MSL) – meters.
- 2. Accuracy to Datum – 3.05 meters
- 3. Data Collection Method:

Survey grade GPS : Post Processed Differential

Real-Time Differential

Mapping Grade GPS : Post Processed Differential

Real-Time Differential

- 4. Letter size copy of the topography map showing the well location.

I the undersigned, hereby certify this data is correct to the best of my knowledge and belief and shows all the information required by law and the regulations issued and prescribed by the Office of Oil and Gas.

Patricia A Bunner

President

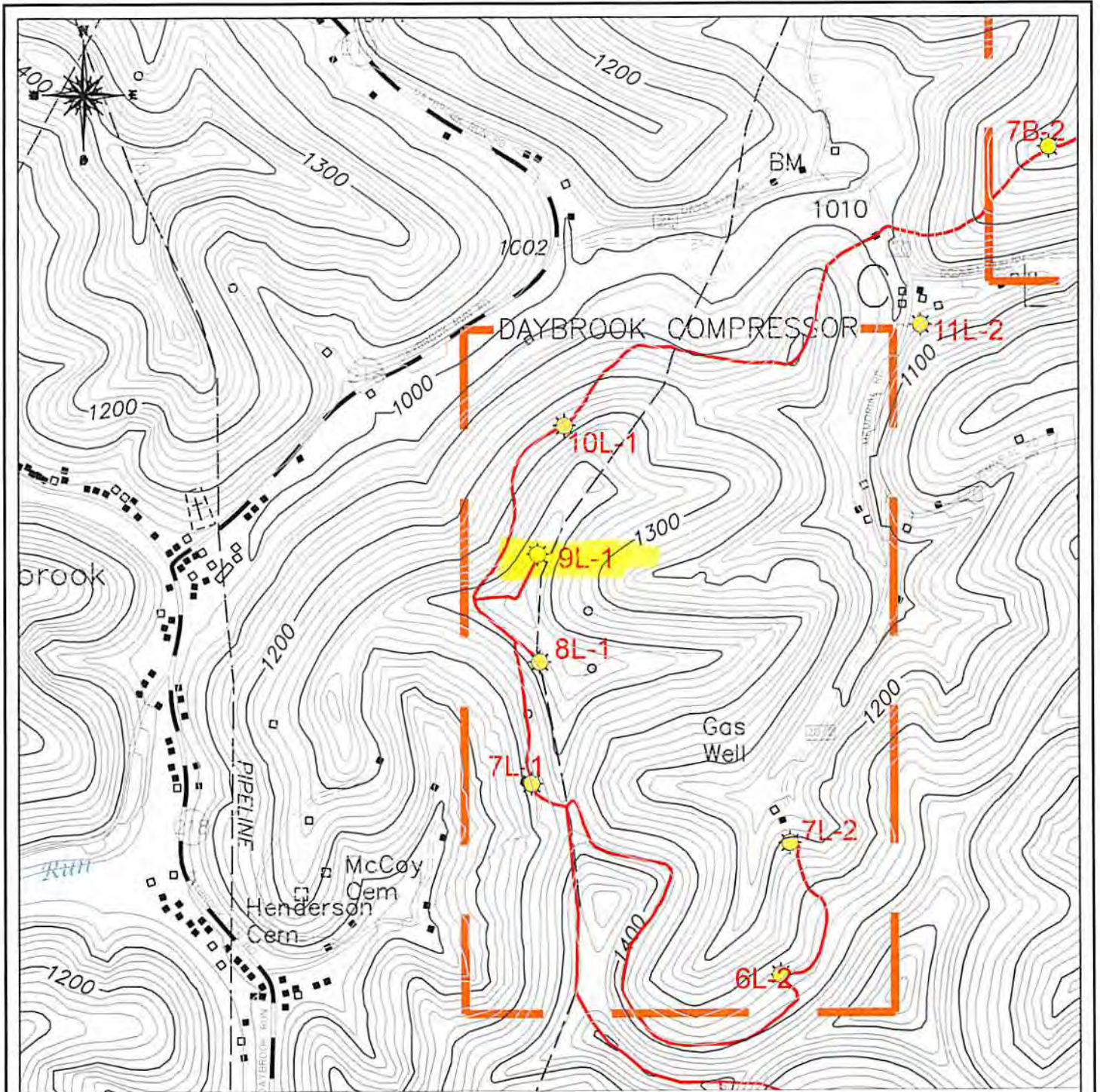
8/25/2014

Signature

Title




Date

RECEIVED
Office of Oil and Gas
SEP 16 2014
WV Department of
Environmental Protection

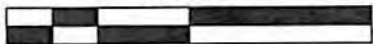


LEGEND

GAS WELL
 UTM ZONE 17 S
 EASTING: 568,276.76
 NORTHING: 4,391,080.54
 ELEVATION 450 M

SURVEYED CBM WELL LOCATION 
 NON-SURVEYED CBM WELL LOCATION 
 GAS LINE 

0FT 1000FT 2000FT



LOCATION MAP

RECEIVED
 NOUMENON CORPORATION
 Office of Environmental Protection
 2461 MASON DIXON HIGHWAY
 CORE, WV 26541

SEP 16 2014
 API WELL NO. 47-061-1346-C
 OPERATOR'S WELL NO. - 9L1

WV Department of
 Environmental Protection
 CLAY DISTRICT - MONONGALIA COUNTY, WV
 7.5 MINUTE SERIES - 20' GRID FOUR INTERVAL
 BLACKSVILLE, WV TOPO QUAD