

6101347P

WW-7  
8-30-06



West Virginia Department of Environmental Protection  
Office of Oil and Gas  
**WELL LOCATION FORM: GPS**

API: 47-061-01347-C WELL NO.: 7L2

FARM NAME: Nehemiah Kassay

RESPONSIBLE PARTY NAME: Lonnie Atkins

COUNTY: Monongalia DISTRICT: Clay

QUADRANGLE: Blacksville

SURFACE OWNER: Nehemiah Kassay

ROYALTY OWNER: Nehemiah Kassay

UTM GPS NORTHING: 4390452.31

UTM GPS EASTING: 568849.57 GPS ELEVATION: 377 (1216')

The Responsible Party named above has chosen to submit GPS coordinates in lieu of preparing a new well location plat for a plugging permit or assigned API number on the above well. The Office of Oil and Gas will not accept GPS coordinates that do not meet the following requirements:

1. Datum: NAD 1983, Zone: 17 North, Coordinate Units: meters, Altitude: height above mean sea level (MSL) – meters.
2. Accuracy to Datum – 3.05 meters
3. Data Collection Method:

Survey grade GPS  : Post Processed Differential

Real-Time Differential

Mapping Grade GPS  : Post Processed Differential

Real-Time Differential

4. Letter size copy of the topography map showing the well location.

I the undersigned, hereby certify this data is correct to the best of my knowledge and belief and shows all the information required by law and the regulations issued and prescribed by the Office of Oil and Gas.

President

8/25/2014

Signature

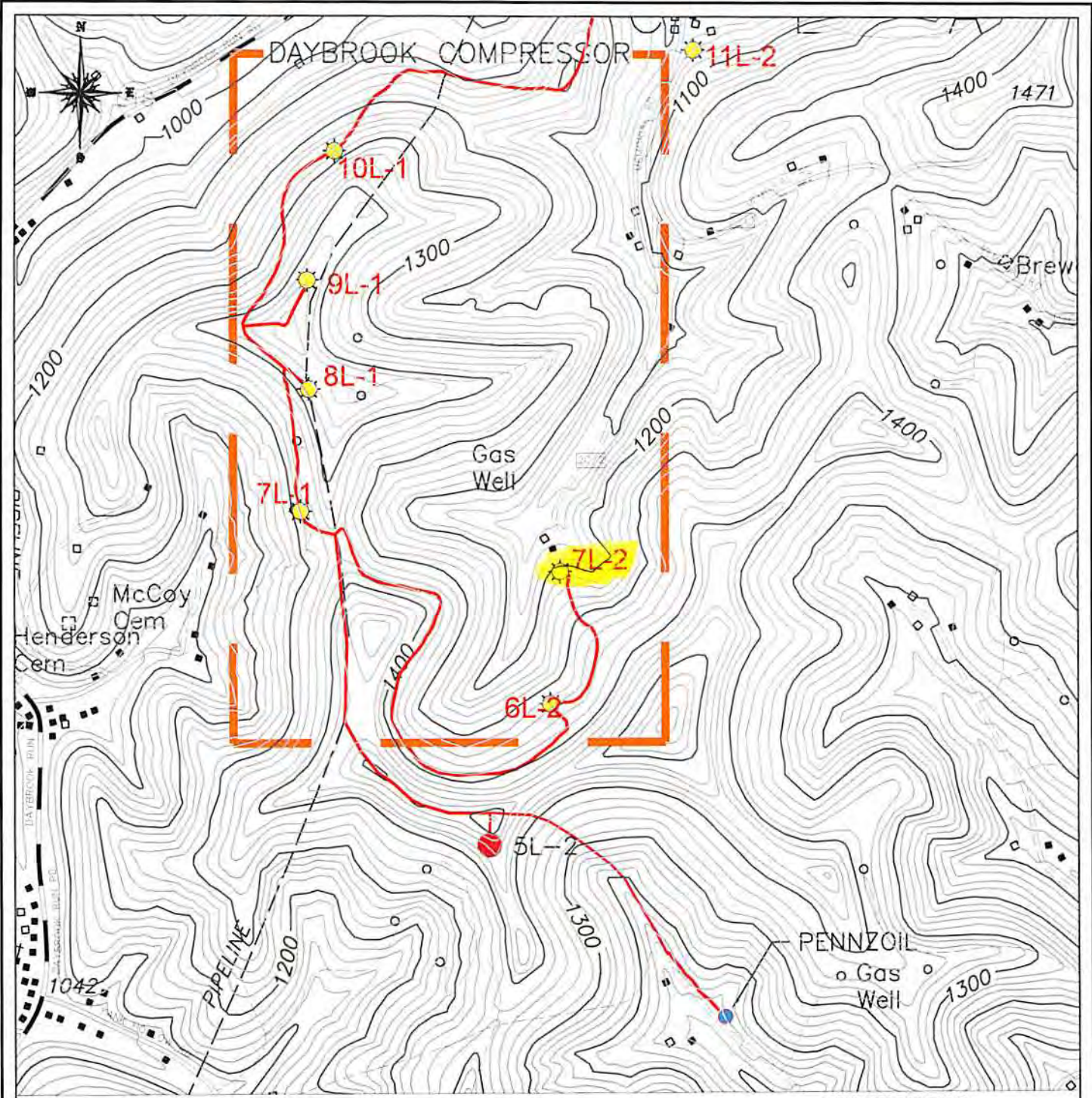
Title

Date

RECEIVED  
Office of Oil and Gas


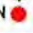
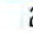
SEP 16 2014


WV Department of  
Environmental Protection



**LEGEND**

UTM ZONE 17 S  
 EASTING: 568,849.57  
 NORTHING: 4,390,452.31  
 ELEVATION: 377 M

SURVEYED CBM WELL LOCATION   
 NON-SURVEYED CBM WELL LOCATION   
 GAS LINE   
 0 FT      1000 FT      2000 FT



**LOCATION MAP**

NOUMENON CORPORATION  
 2461 MASON DIXON HIGHWAY  
 CORE, WV 26541

**API WELL NO. - 47-061-1347-C**  
**OPERATOR'S WELL NO. - 7L2**

CLAY DISTRICT - MONONGALIA COUNTY, WV  
 7.5 MINUTE SERIES - 20' CONTOUR INTERVAL  
 BLACKSVILLE, WV TOPO QUAD  
 Environmental Protection