

6101355P

WW-7
8-30-06



West Virginia Department of Environmental Protection
Office of Oil and Gas

WELL LOCATION FORM: GPS

API: 47-061-01355-C WELL NO.: 6SW2

FARM NAME: Arzie P Dille

RESPONSIBLE PARTY NAME: Lonnie Atkins

COUNTY: Monongalia DISTRICT: Clay

QUADRANGLE: Blacksville

SURFACE OWNER: Arzie P Dille

ROYALTY OWNER: Arzie P Dille

UTM GPS NORTHING: 4396933.51

UTM GPS EASTING: 572066.05 GPS ELEVATION: 326 (1075')

The Responsible Party named above has chosen to submit GPS coordinates in lieu of preparing a new well location plat for a plugging permit or assigned API number on the above well. The Office of Oil and Gas will not accept GPS coordinates that do not meet the following requirements:

- Datum: NAD 1983, Zone: 17 North, Coordinate Units: meters, Altitude: height above mean sea level (MSL) – meters.
- Accuracy to Datum – 3.05 meters
- Data Collection Method:

Survey grade GPS : Post Processed Differential
Real-Time Differential

Mapping Grade GPS : Post Processed Differential
Real-Time Differential

- Letter size copy of the topography map showing the well location.

I the undersigned, hereby certify this data is correct to the best of my knowledge and belief and shows all the information required by law and the regulations issued and prescribed by the Office of Oil and Gas.

President

0/25/2014

Signature

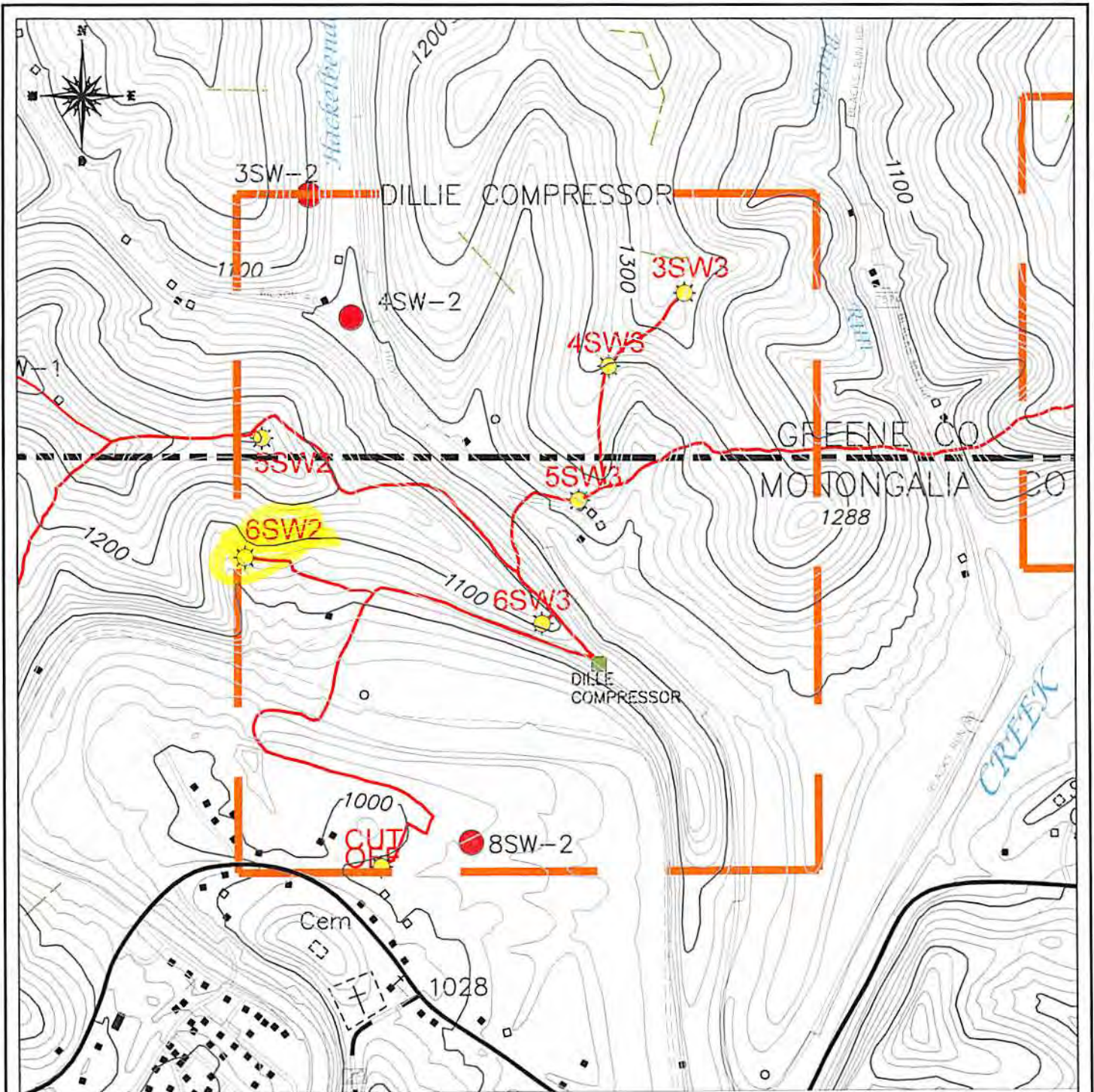
Title

Date

RECEIVED
Office of Oil and Gas




SEP 16 2014

West Virginia Department of
Environmental Protection



LEGEND

GAS WELL
 UTM ZONE 17 S
 EASTING: 572,066.05
 NORTHING: 4,396,933.51
 ELEVATION: 326 M

SURVEYED CBM WELL LOCATION 
 NON-SURVEYED CBM WELL LOCATION 
 GAS LINE 
 0 FT 1000 FT 2000 FT

LOCATION MAP

RECEIVED
 NOUMENON CORPORATION
 2481 MASON DIXON HIGHWAY
 CORE, WV 26541
 SEP 16 2014
 API WELL NO. - 47-061-1355-C
 OPERATOR'S WELL NO. - 6SW2
 WV Department of Environmental Protection
 CLAY DISTRICT, MONTONGALIA COUNTY, WV
 2.5 MINUTE SERIES - 20' CONTOUR INTERVAL
 BLACKSVILLE, WV TOPO QDAD