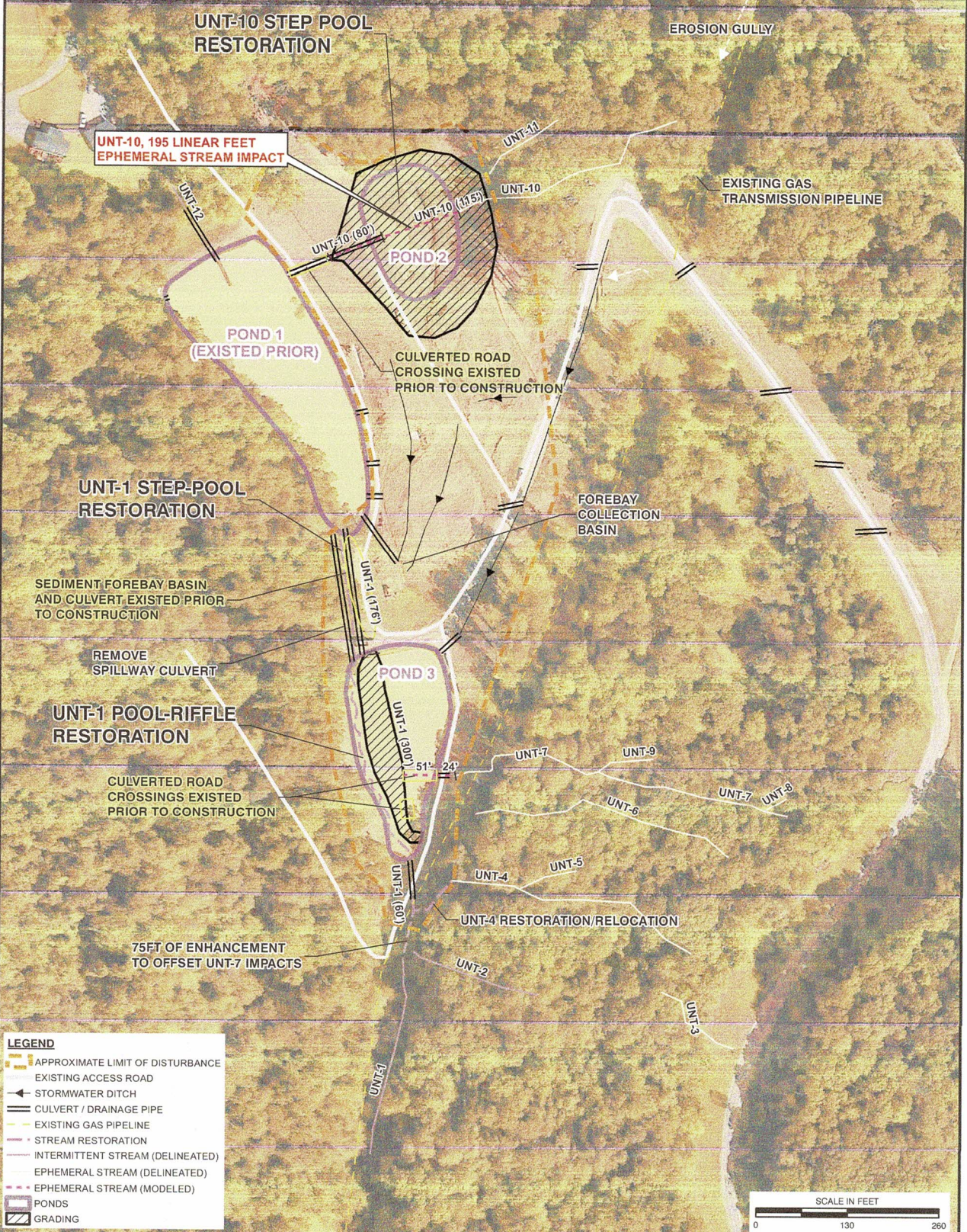




SUBMITTAL & REVISION RECORD		
NO	DATE	DESCRIPTION
--	--	--



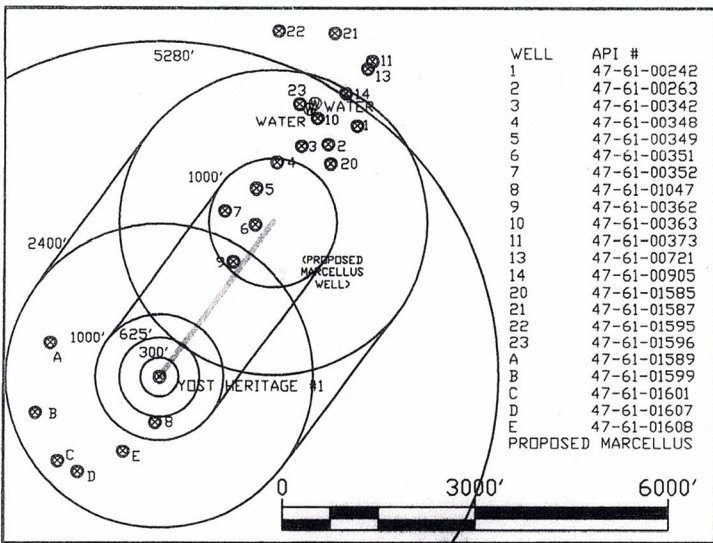
REFERENCE
 GOOGLE EARTH PRO AERIAL IMAGERY.
 IMAGERY DATE: 2013.


Civil & Environmental Consultants, Inc.
 333 Baldwin Road - Pittsburgh, PA 15205-9072
 412-429-2324 • 800-365-2324
 www.cecinc.com

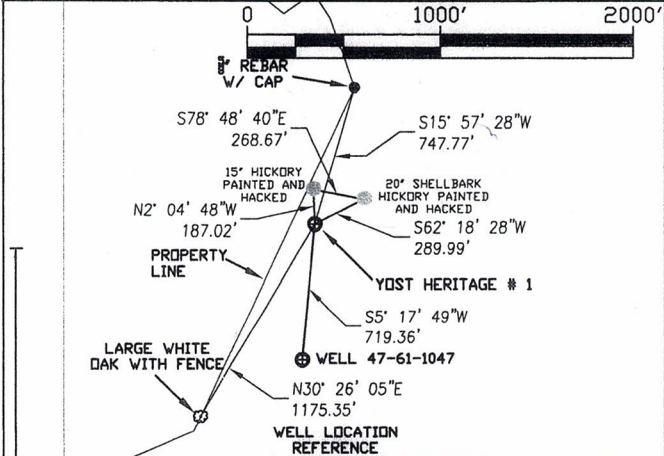
DRAWN BY:	NBW	CHECKED BY:	RAE	APPROVED BY:	DRAFT
DATE:	2/9/2015	SCALE:	1" = 130'	PROJECT NO:	143-004

DAYBROOK DEVELOPMENT
 COMPANY/YOST HERITAGE, INC.
 DAYBROOK/YOST IMPOUNDMENTS
 MONONGALIA COUNTY
 WEST VIRGINIA
**CONCEPTUAL STREAM RESTORATION
 AND GRADING MAP**

FIGURE NO: **01/31/2025**



WELL	API #
1	47-61-00242
2	47-61-00263
3	47-61-00342
4	47-61-00348
5	47-61-00349
6	47-61-00351
7	47-61-00352
8	47-61-01047
9	47-61-00362
10	47-61-00363
11	47-61-00373
13	47-61-00721
14	47-61-00905
20	47-61-01585
21	47-61-01587
22	47-61-01595
23	47-61-01596
A	47-61-01589
B	47-61-01599
C	47-61-01601
D	47-61-01607
E	47-61-01608



NOTES:
West Virginia Coordinate System of 1927, North Zone based upon Differential GPS Measurements.

Yost Heritage # 1
Top Hole Coordinates:
N: 414,918.0189 Latitude: N39°38'12.87"
E: 1,764,419.6800 Longitude: W80°13'28.78"

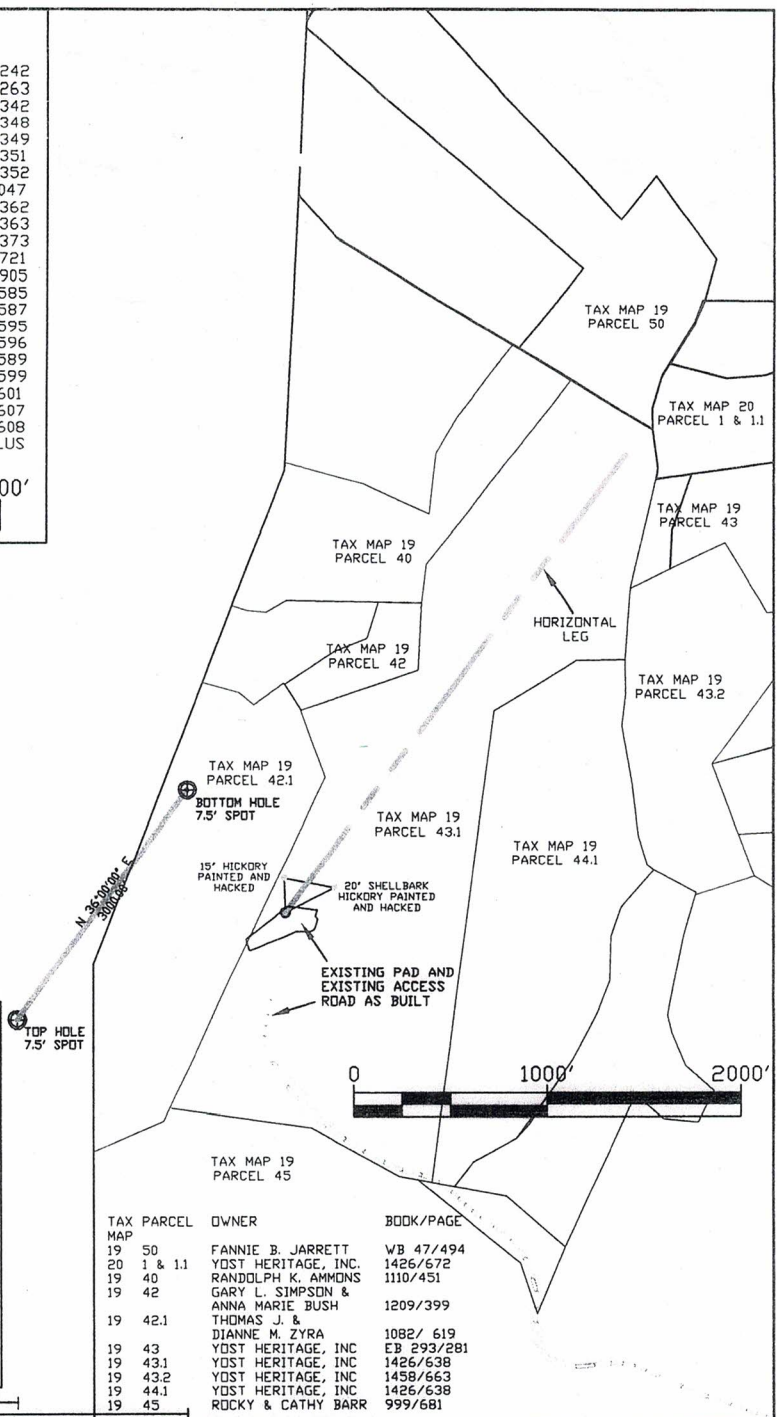
Bottom Hole Coordinates:
N: 417,345.0699 Latitude: N39°38'37.00"
E: 1,766,183.0358 Longitude: W80°13'06.49"

UTM Zone 17, NAD 83
Top Hole Coordinates:
N: 4,387,746.04m E: 566,532.28m

Bottom Hole Coordinates:
N: 4,388,494.55m E: 567,057.12m

6719' TO BOTTOM HOLE
4992' TO TOP HOLE
LONGITUDE 80°19'00"

LATITUDE 39°37'30" 7083' TO TOP HOLE 8848' TO BOTTOM HOLE



TAX PARCEL MAP	OWNER	BOOK/PAGE
19 50	FANNIE B. JARRETT	WB 47/494
20 1 & 1.1	YOST HERITAGE, INC.	1426/672
19 40	RANDOLPH K. AMMONS	1110/451
19 42	GARY L. SIMPSON & ANNA MARIE BUSH	1209/399
19 42.1	THOMAS J. & DIANNE M. ZYRA	1082/ 619
19 43	YOST HERITAGE, INC	EB 293/281
19 43.1	YOST HERITAGE, INC	1426/638
19 43.2	YOST HERITAGE, INC	1458/663
19 44.1	YOST HERITAGE, INC	1426/638
19 45	ROCKY & CATHY BARR	999/681

FILE #: 2012-76
DRAWING #: MYLAR
SCALE: 1" = 2000'

MINIMUM DEGREE OF ACCURACY: 1/25000
PROVEN SOURCE OF ELEVATION: CORS VRS

I, THE UNDERSIGNED, HEREBY CERTIFY THAT THIS PLAT IS CORRECT TO THE BEST OF MY KNOWLEDGE AND BELIEF AND SHOWS ALL THE INFORMATION REQUIRED BY LAW AND THE REGULATIONS ISSUED AND PRESCRIBED BY THE DEPARTMENT OF ENVIRONMENTAL PROTECTION.

Signed: Gary K. Clayton
R.P.E.: 7188 L.L.S.: 1072

PLACE SEAL HERE

(+) DENOTES LOCATION OF WELL ON UNITED STATES TOPOGRAPHIC MAPS
WVDEP
OFFICE OF OIL & GAS
601 57TH STREET
CHARLESTON, WV 25304



DATE: 1/22/2013
OPERATOR'S WELL #: YOST HERITAGE #1
API WELL #: 47 61 01651H6A
STATE COUNTY PERMIT

Well Type: Oil Waste Disposal Production Deep
 Gas Liquid Injection Storage Shallow

01/31/2025