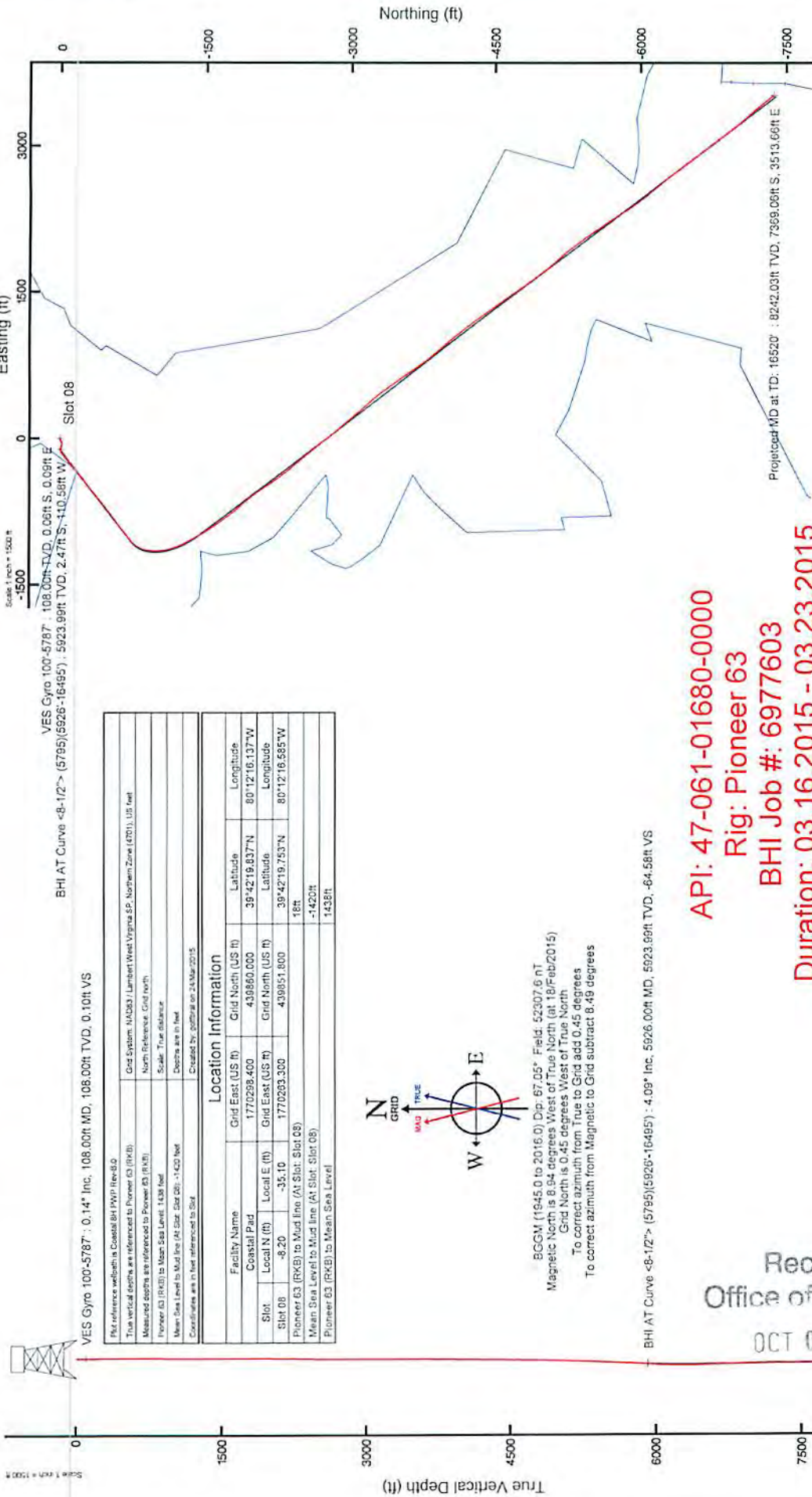
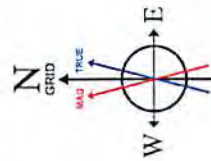


61-01680



VES Gyro 100-5787 : 0.14" Inc, 108.00ft MD, 108.00ft TVD, 0.10ft VS

Reference wellbore is Coastal 8H PWB Rnd-8			
True vertical depth is referenced to Pioneer 63 (RKB)			
Measured depth is referenced to Pioneer 63 (RKB)			
Pioneer 63 (RKB) to Mean Sea Level: 1438 feet			
Scale: True distance			
Doubts are in feet			
Coordinates are in feet referenced to Slot			
Created by: gpb/ral on 24-Mar-2015			
Location Information			
Facility Name	Grid East (US ft)	Grid North (US ft)	Latitude
Coastal Pad	1770298.400	439860.000	39°42'19.837"N
Slot	Local E (ft)	Grid North (US ft)	Latitude
Slot 08	-8.20	1770293.300	39°42'19.753"N
Pioneer 63 (RKB) to Mud line (At Slot: Slot 08)		439851.800	18ft
Mean Sea Level to Mud line (At Slot: Slot 08)		-1420ft	
Pioneer 63 (RKB) to Mean Sea Level		1438ft	



BGGM (1845.0 to 2016.0) Dip: 67.05° Field: 52307.6 mT  
Magnetic North is 6.94 degrees West of True North (at 18-Feb-2015)  
Grid North is 0.14 degrees West of True North  
To correct azimuth from True to Grid add 0.14 degrees  
To correct azimuth from Magnetic to Grid subtract 8.49 degrees

BHI AT Curve <-8-1/2"> (5795)(5926-16495) : 4.09" Inc, 5926.00ft MD, 5923.99ft TVD, -64.58ft VS

**API: 47-061-01680-0000**  
**Rig: Pioneer 63**  
**BHI Job #: 6977603**  
**Duration: 03.16.2015 - 03.23.2015**

Received  
Office of Oil & Gas  
OCT 07 2015

Projected MD at TD: 16520' : 90.34" Inc, 16520.00ft MD, 8242.03ft TVD, 7999.77ft VS

10/30/2015



61-01680

ACTUAL WELLPATH REPORT (CSV version)  
 Prepared by Baker Hughes  
 Software System: WellArchitect® 4.0.1

REFERENCE WELLPATH IDENTIFICATION

Operator: NORTHEAST NATURAL ENERGY, LLC  
 Area: Monongalia County, WV  
 Field: Monongalia  
 Facility: Coastal Pad  
 Slot: Slot C8  
 Well: Coastal 2H  
 Wellbore: Coastal BH AWB  
 Wellpath: Coastal BH AWP Proj:165207  
 Sidetrack: (none)

REPORT SETUP INFORMATION

Projection System: NAD83 / Lambert West Virginia SP, Northern Zone (4701), US feet  
 North Reference: Grid  
 Scale: 0.999942  
 Convergence at slot: 0.45° West  
 Software System: WellArchitect® 4.0.1  
 User: Gottfral  
 Report Generated: 24/Mar/2015 at 13:47  
 DataBase/Source File: WAnorthEast/ev5758.xml

WELLPATH LOCATION

	Local North [ft]	Local East [ft]	Easting [US ft]	Northing [US ft]	Latitude	Longitude
Slot Location	-8.2	-35.1	1770263	439851.8	39°42'19.780"12'16.585"W	
Facility Reference Pt			1770293	439860	39°42'19.860"12'16.137"W	
Field Reference Pt			177656	440640.7	39°42'28.160"10'41.690"W	

WELLPATH DATUM

Calculation method: Minimum curvature  
 Horizontal Reference Point: Slot  
 Vertical Reference Point: Pioneer 63 (RKB)  
 MD Reference Point: Pioneer 63 (RKB)  
 Field Vertical Reference: Mean Sea Level  
 Pioneer 63 (RKB) to Facility Vertical Datum: 18.00ft  
 Pioneer 63 (RKB) to Mean Sea Level: 1438.00ft  
 Pioneer 63 (RKB) to Mudline at Slot (Slot C8): 18.00ft  
 Section Origin: N 0.00, E 0.00 ft  
 Section Azimuth: 143.00°

WELLPATH DATA \* = interpolated/extrapolated station

MD [ft]	Inclination [°]	Azimuth [°]	TVD [ft]	Vert Sect [ft]	North [ft]	East [ft]	Grid East [US ft]	Grid North [US ft]	Latitude	Longitude	Closure Di [ft]	Closure Di DLS [ft/100ft]
0	0	0	125.69	0	0	0	1770263.3	439851.8	39°42'19.753"W	60°12'16.585"W	0	0
18	0	0	125.69	18	0	0	1770263.3	439851.8	39°42'19.753"W	60°12'16.585"W	0	0
108	0.14	125.69	108	0.1	-0.06	0.09	1770263.39	439851.74	39°42'19.752"W	60°12'16.584"W	0.11	125.69
208	0.24	166.36	208	0.41	-0.34	0.24	1770263.54	439851.46	39°42'19.750"W	60°12'16.582"W	0.41	144.934
308	0.3	167.99	308	0.84	-0.8	0.34	1770263.64	439851	39°42'19.745"W	60°12'16.581"W	0.87	156.829
408	0.25	214.56	408	1.15	-1.23	0.27	1770263.57	439850.57	39°42'19.741"W	60°12'16.582"W	1.26	167.55
508	0.18	278.37	508	1.23	-1.52	0.03	1770263.33	439850.28	39°42'19.738"W	60°12'16.585"W	1.52	178.818
608	0.23	182.19	608	1.4	-1.82	-0.09	1770263.21	439849.58	39°42'19.735"W	60°12'16.585"W	1.83	182.943
708	0.14	52.8	708	1.55	-1.95	0	1770263.3	439849.85	39°42'19.734"W	60°12'16.585"W	1.95	180.12
808	0.46	329.72	807.99	1.16	-1.53	-0.11	1770263.19	439850.27	39°42'19.738"W	60°12'16.587"W	1.53	184.094
908	0.36	289.34	907.99	0.5	-1.08	-0.61	1770262.69	439850.72	39°42'19.742"W	60°12'16.593"W	1.24	209.409
1008	0.22	253.64	1007.99	0.17	-1.03	-1.09	1770262.21	439850.77	39°42'19.743"W	60°12'16.599"W	1.5	216.621
1108	0.25	188.08	1107.99	0.25	-1.3	-1.3	1770262	439850.5	39°42'19.740"W	60°12'16.602"W	1.84	225.104
1208	0.06	87.59	1207.99	0.44	-1.51	-1.28	1770262.02	439850.29	39°42'19.738"W	60°12'16.607"W	1.98	220.228
1308	0.53	241.01	1307.99	0.4	-1.73	-1.63	1770261.67	439850.07	39°42'19.736"W	60°12'16.606"W	2.38	223.292
1408	0.71	261.7	1407.98	0.04	-2.05	-2.65	1770260.65	439849.75	39°42'19.733"W	60°12'16.619"W	3.35	232.318
1508	0.36	266.94	1507.98	-0.43	-2.15	-3.58	1770259.72	439849.65	39°42'19.731"W	60°12'16.631"W	4.18	238.951
1608	0.12	251.69	1607.98	-0.7	-2.26	-4.16	1770259.14	439849.54	39°42'19.730"W	60°12'16.638"W	4.73	241.483
1708	0.23	303.47	1707.98	-0.98	-2.24	-4.59	1770258.71	439849.56	39°42'19.731"W	60°12'16.644"W	5.11	244.078
1808	0.34	25.41	1807.97	-1.3	-1.86	-4.63	1770258.67	439849.94	39°42'19.734"W	60°12'16.644"W	4.99	248.143
1908	0.28	22.96	1907.97	-1.55	-1.4	-4.42	1770258.88	439850.4	39°42'19.739"W	60°12'16.642"W	4.64	252.472
2008	0.24	312.74	2007.97	-1.89	-1.04	-4.52	1770258.78	439850.76	39°42'19.742"W	60°12'16.643"W	4.64	257.067
2108	0.48	195.97	2107.97	-2.5	-0.69	-5.07	1770258.23	439851.11	39°42'19.746"W	60°12'16.650"W	5.12	262.275
2208	0.74	291.72	2207.96	-3.43	-0.27	-6.05	1770257.25	439851.53	39°42'19.750"W	60°12'16.663"W	6.06	267.483
2308	1.55	269.93	2307.94	-4.79	-0.03	-8	1770255.3	439851.77	39°42'19.752"W	60°12'16.688"W	8	269.794
2408	1.72	259.96	2407.9	-6.29	-0.29	-10.83	1770252.47	439851.51	39°42'19.749"W	60°12'16.724"W	10.84	268.456
2508	1.82	247.76	2507.86	-7.37	-1.15	-13.78	1770249.52	439850.65	39°42'19.741"W	60°12'16.762"W	13.83	265.211
2608	1.57	236.92	2607.81	-7.87	-2.5	-16.4	1770246.9	439849.3	39°42'19.727"W	60°12'16.795"W	16.59	261.321
2708	1.61	232.83	2707.77	-7.96	-4.1	-18.67	1770244.63	439847.7	39°42'19.711"W	60°12'16.824"W	19.11	257.612
2808	1.74	231.99	2807.73	-7.93	-5.88	-20.98	1770242.32	439845.92	39°42'19.693"W	60°12'16.853"W	21.79	254.336
2908	1.56	230.48	2907.69	-7.84	-7.68	-23.23	1770240.07	439844.12	39°42'19.675"W	60°12'16.882"W	24.47	251.694
3008	1.43	233.43	3007.66	-7.79	-9.29	-25.28	1770238.02	439842.51	39°42'19.659"W	60°12'16.908"W	26.93	249.814
3108	1.51	234.83	3107.62	-7.84	-10.8	-27.36	1770235.94	439841	39°42'19.644"W	60°12'16.934"W	29.41	248.465
3208	1.33	231.74	3207.59	-7.86	-12.27	-29.35	1770233.95	439839.53	39°42'19.630"W	60°12'16.960"W	31.81	247.304
3308	1.06	235.29	3307.57	-7.87	-13.52	-31.02	1770232.28	439838.28	39°42'19.617"W	60°12'16.981"W	33.84	246.451
3408	1.01	239.04	3407.55	-8	-14.5	-32.54	1770230.77	439837.3	39°42'19.607"W	60°12'17.000"W	35.62	245.98
3508	1	244	3507.54	-8.26	-15.34	-34.08	1770229.23	439836.47	39°42'19.599"W	60°12'17.020"W	37.37	245.77
3608	1.08	255.81	3607.52	-8.79	-15.95	-35.77	1770227.53	439835.85	39°42'19.593"W	60°12'17.041"W	39.17	245.971
3708	1.13	266.06	3707.5	-9.7	-16.25	-37.67	1770225.63	439835.55	39°42'19.590"W	60°12'17.066"W	41.03	246.669
3808	1.06	262.03	3807.49	-10.68	-16.44	-39.57	1770223.73	439835.36	39°42'19.588"W	60°12'17.090"W	42.85	247.434
3908	1.12	267.46	3907.47	-11.68	-16.62	-41.46	1770221.84	439835.19	39°42'19.586"W	60°12'17.114"W	44.67	248.163
4008	1.01	261.94	4007.45	-12.66	-16.78	-43.31	1770219.99	439835.02	39°42'19.584"W	60°12'17.138"W	46.45	248.82
4108	1.13	267.85	4107.43	-13.65	-16.94	-45.17	1770218.13	439834.86	39°42'19.582"W	60°12'17.162"W	48.24	249.44
4208	1.03	265.5	4207.42	-14.7	-17.05	-47.05	1770216.25	439834.75	39°42'19.581"W	60°12'17.186"W	50.05	250.081
4308	0.97	268.66	4307.4	-15.61	-17.21	-48.79	1770214.51	439834.59	39°42'19.579"W	60°12'17.209"W	51.7	250.565
4408	1.1	268.68	4407.38	-16.61	-17.33	-50.59	1770212.71	439834.47	39°42'19.578"W	60°12'17.231"W	53.2	251.05
4508	1.25	267.49	4507.35	-17.76	-17.4	-52.64	1770210.66	439834.4	39°42'19.577"W	60°12'17.257"W	55.1	251.50
4608	1.44	267.73	4607.33	-19.12	-17.5	-54.98	1770208.32	439834.3	39°42'19.576"W	60°12'17.281"W	57.2	252.00
4708	1.66	271.75	4707.3	-20.74	-17.5	-57.69	1770205.62	439834.3	39°42'19.576"W	60°12'17.307"W	59.4	252.50
4808	1.8	273.16	4807.25	-22.66	-17.37	-60.7	1770202.6	439834.43	39°42'19.577"W	60°12'17.360"W	63.14	254.01
4908	1.94	274.97	4907.2	-24.8	-17.14	-63.96	1770199.35	439834.66	39°42'19.579"W	60°12'17.402"W	66.21	254.999
5008	2.24	278.14	5007.13	-27.32	-16.72	-67.58	1770195.73	439835.09	39°42'19.583"W	60°12'17.448"W	69.2	255.97
5108	2.52	279.15	5107.05	-30.29	-16.09	-71.68	1770191.62	439835.71	39°42'19.589"W	60°12'17.501"W	73.47	257.35
5208	2.77	285.29	5206.94	-33.79	-15.1	-76.19	1770187.12	439836.7	39°42'19.598"W	60°12'17.559"W	77.67	258.787

Received  
 Office of Oil & Gas  
 06/10/2015

10/30/2015

61-01680

5308	2.83	286.86	5306.82	-17.69	-11.75	-80.88	1770182.43	439838.05	39°42'19.611"N	00°12'17.619"W	82.04	260.352	0.1
5408	2.91	289.42	5406.7	-41.8	-12.19	-85.64	1770177.67	439839.61	39°42'19.626"N	00°12'17.660"W	85.5	261.899	0.15
5508	2.74	291.43	5506.57	-45.95	-10.47	-90.25	1770173.05	439841.33	39°42'19.643"N	00°12'17.739"W	90.86	263.382	0.2
5608	2.8	295	5606.46	-50.15	-8.57	-94.69	1770168.61	439843.23	39°42'19.661"N	00°12'17.796"W	95.08	264.831	0.18
5708	2.86	297.65	5706.34	-54.56	-6.38	-99.12	1770164.19	439845.42	39°42'19.682"N	00°12'17.853"W	99.32	266.319	0.14
5795	2.87	296.24	5793.23	-58.46	-4.41	-102.99	1770160.31	439847.39	39°42'19.702"N	00°12'17.903"W	103.09	267.55	0.08
5876	4.09	276.02	5873.99	-64.58	-2.47	-110.58	1770152.73	439849.33	39°42'19.720"N	00°12'18.000"W	110.61	268.722	1.31
5899	9.04	257.12	5896.56	-68.14	-1.33	-117.64	1770145.66	439848.47	39°42'19.711"N	00°12'18.090"W	117.69	268.376	8.47
6052	14.34	249.41	6048.24	-72.37	-1.18	-129.78	1770133.53	439844.62	39°42'19.672"N	00°12'18.245"W	129.58	266.831	8.75
6116	18.57	240.65	6109.61	-75.97	-14.97	-146.09	1770117.21	439836.83	39°42'19.594"N	00°12'18.453"W	146.56	264.149	7.65
6179	20.42	236.04	6169	-77.88	-26.03	-163.96	1770099.35	439825.77	39°42'19.483"N	00°12'18.680"W	166.01	260.979	3.82
6242	23.55	234.03	6227.41	-78.69	-39.56	-183.76	1770080.05	439812.24	39°42'19.348"N	00°12'18.926"W	187.49	257.817	5.11
6306	26.45	233.42	6285.41	-79.03	-55.57	-205.06	1770058.25	439796.23	39°42'19.188"N	00°12'19.203"W	212.46	254.837	4.55
6369	30.79	232.01	6340.7	-78.85	-73.87	-229.05	1770034.27	439777.94	39°42'19.005"N	00°12'19.508"W	240.66	252.126	6.97
6433	34.07	231.54	6394.71	-78.11	-95.11	-256	1770007.31	439756.7	39°42'18.793"N	00°12'19.851"W	273.1	249.62	5.14
6496	36.63	230.39	6446.09	-76.81	-118.07	-284.3	1769979.01	439733.74	39°42'18.564"N	00°12'20.211"W	307.85	247.448	4.2
6559	38.23	230.11	6496.12	-74.97	-142.55	-313.74	1769949.58	439709.26	39°42'18.322"N	00°12'20.585"W	344.61	245.565	2.55
6623	37.3	229.05	6546.71	-72.63	-167.96	-343.58	1769919.74	439683.85	39°42'18.067"N	00°12'20.964"W	382.44	243.948	1.77
6686	36.33	229.21	6597.15	-70.08	-192.67	-372.13	1769891.19	439659.15	39°42'17.820"N	00°12'21.327"W	419.05	242.628	1.55
6749	37.64	231.3	6647.47	-68.28	-216.89	-401.27	1769862.05	439634.93	39°42'17.579"N	00°12'21.698"W	456.14	241.609	2.88
6813	39.77	232.19	6697.41	-67.41	-241.66	-431.7	1769832.62	439610.16	39°42'17.331"N	00°12'22.097"W	493.61	240.817	3.44
6876	39.37	231.46	6748.98	-66.59	-266.46	-464.25	1769799.08	439585.36	39°42'17.084"N	00°12'22.498"W	535.29	240.146	0.97
6939	39.3	231.23	6794.71	-65.44	-291.4	-495.44	1769767.89	439560.41	39°42'16.835"N	00°12'22.895"W	574.78	239.537	0.26
7002	38.84	230.18	6843.62	-63.85	-316.55	-526.17	1769737.17	439535.27	39°42'16.586"N	00°12'23.285"W	614.05	238.968	1.28
7066	39.72	230.37	6893.16	-61.92	-342.44	-557.33	1769706	439509.38	39°42'16.326"N	00°12'23.682"W	654.13	238.432	1.99
7130	39.74	230.42	6942.38	-60.06	-368.52	-588.85	1769674.49	439483.3	39°42'16.065"N	00°12'24.082"W	694.66	237.96	0.06
7193	38.09	230.97	6991.39	-58.47	-393.59	-619.47	1769643.87	439458.23	39°42'15.815"N	00°12'24.471"W	733.93	237.569	2.68
7255	38.24	230.62	7040.14	-56.99	-417.81	-649.15	1769614.19	439434.02	39°42'15.574"N	00°12'24.849"W	771.99	237.234	0.42
7319	38.04	231.05	7090.48	-55.5	-442.77	-679.8	1769583.54	439409.06	39°42'15.325"N	00°12'25.238"W	811.28	236.923	0.52
7382	38.02	231.54	7140.1	-54.45	-466.96	-710.15	1769553.19	439384.87	39°42'15.083"N	00°12'25.624"W	849.92	236.678	0.77
7445	36.82	232.6	7190.14	-53.92	-490.42	-740.4	1769522.94	439361.41	39°42'14.849"N	00°12'26.009"W	888.09	236.481	2.04
7509	36.05	233.41	7241.63	-53.92	-513.29	-770.76	1769492.59	439338.54	39°42'14.621"N	00°12'26.395"W	926.03	236.338	1.42
7572	35.04	233.91	7292.89	-54.34	-534.99	-800.26	1769463.09	439316.84	39°42'14.404"N	00°12'26.770"W	963.62	236.216	1.67
7635	34.46	233.49	7344.65	-54.78	-556.23	-829.2	1769434.15	439295.58	39°42'14.192"N	00°12'27.138"W	998.49	236.145	1
7698	35.26	233.24	7396.34	-55.01	-577.74	-858.09	1769405.26	439274.1	39°42'13.977"N	00°12'27.506"W	1034.46	236.048	1.29
7761	38.5	232.74	7446.73	-55	-600.5	-888.25	1769375.08	439251.34	39°42'13.750"N	00°12'27.890"W	1072.71	235.94	5.16
7824	38.39	231.84	7496.07	-54.51	-624.46	-919.27	1769344.09	439227.38	39°42'13.510"N	00°12'28.284"W	1111.31	235.812	0.91
7887	38.45	232.42	7545.43	-53.92	-648.49	-950.17	1769313.19	439203.35	39°42'13.271"N	00°12'28.677"W	1150.38	235.686	0.58
7951	38.51	232.6	7595.53	-53.58	-672.73	-981.77	1769281.59	439179.11	39°42'13.029"N	00°12'29.079"W	1190.14	235.58	0.2
8014	37.56	232.8	7645.15	-53.37	-696.25	-1012.65	1769250.71	439155.59	39°42'12.794"N	00°12'29.471"W	1228.91	235.489	1.52
8077	36.01	232.74	7695.61	-53.22	-719.08	-1042.68	1769220.68	439132.77	39°42'12.566"N	00°12'29.853"W	1266.59	235.408	2.46
8140	35.47	227.3	7746.76	-51.32	-742.69	-1070.66	1769192.5	439109.15	39°42'12.330"N	00°12'30.211"W	1303.2	235.257	5.11
8203	35.68	217.28	7798.04	-44.52	-769.73	-1095.45	1769167.92	439082.12	39°42'12.061"N	00°12'30.523"W	1338.84	234.906	9.25
8266	37.47	208.39	7848.67	-31.56	-801.23	-1115.7	1769142.66	439056.62	39°42'11.748"N	00°12'30.779"W	1373.59	234.316	8.87
8329	40.56	200.76	7897.65	-12.48	-837.34	-1131.92	1769113.45	439031.51	39°42'11.500"N	00°12'31.083"W	1407.97	233.508	9.48
8392	43.8	193.44	7944.35	12.5	-877.79	-1144.09	1769119.28	438994.06	39°42'10.939"N	00°12'31.355"W	1442.03	232.503	8.9
8455	48.13	185.9	7988.16	43.61	-922.38	-1151.58	1769111.79	438929.47	39°42'10.548"N	00°12'31.286"W	1475.44	231.305	11
8518	50.82	180.71	8029.11	80.13	-970.16	-1154.79	1769109.03	438841.7	39°42'10.076"N	00°12'31.256"W	1507.85	229.954	7.56
8581	54.61	174.75	8067.29	121.32	-1020.19	-1152.25	1769111.12	438833.67	39°42'09.581"N	00°12'31.225"W	1538.98	228.478	9.63
8644	57.94	170.87	8102.27	166.78	-1072.15	-1145.66	1769117.71	438779.71	39°42'09.068"N	00°12'31.195"W	1569.09	226.893	7.36
8708	62.02	166.37	8134.3	216.74	-1126.43	-1134.68	1769128.68	438725.49	39°42'08.533"N	00°12'31.099"W	1598.86	225.209	8.81
8770	67.28	159.71	8160.86	269.34	-1179.95	-1118.29	1769145.08	438671.92	39°42'08.005"N	00°12'31.074"W	1625.68	223.463	12.89
8833	73.55	155.51	8181.97	326.75	-1234.77	-1095.66	1769167.71	438617.11	39°42'07.465"N	00°12'31.079"W	1650.8	221.584	11.77
8897	78.57	152.54	8197.39	387.69	-1290.58	-1068.45	1769194.91	438561.3	39°42'06.917"N	00°12'31.025"W	1675.46	219.621	9.04
8960	81.87	151.47	8208.09	449	-1345.39	-1039.31	1769224.05	438506.49	39°42'06.377"N	00°12'29.747"W	1700.07	217.666	5.5
9024	84.21	151.09	8215.85	511.86	-1401.1	-1008.79	1769254.58	438450.79	39°42'05.828"N	00°12'29.351"W	1726.48	215.554	3.7
9087	85.87	148.96	8221.29	574.15	-1455.46	-977.43	1769285.93	438396.43	39°42'05.294"N	00°12'28.944"W	1753.21	213.884	4.28
9151	85.9	146.71	8225.89	637.75	-1509.49	-943.45	1769319.91	438342.4	39°42'04.763"N	00°12'28.504"W	1780.07	212.006	3.51
9214	86	146.5	8230.34	700.47	-1561.96	-908.86	1769354.5	438289.93	39°42'04.246"N	00°12'28.056"W	1807.14	210.194	0.37
9276	89.91	144.45	8232.55	762.36	-1612.99	-873.75	1769389.6	438238.9	39°42'03.745"N	00°12'27.602"W	1834.45	208.444	7.12
9340	90.31	143.69	8234.43	826.35	-1664.82	-836.19	1769427.16	438187.08	39°42'03.236"N	00°12'27.116"W	1863.02	206.669	1.94
9402	91.66	144.11	8231.36	888.33	-1714.9	-799.67	1769463.68	438133.37	39°42'02.743"N	00°12'26.644"W	1892.19	205	2.28
9466	90.25	142.55	8230.29	952.32	-1766.23	-761.46	1769501.89	438080.68	39°42'02.239"N	00°12'26.150"W	1923.38	203.32	3.29
9529	88.95	139.07	8230.73	1015.26	-1815.05	-721.66	1769541.69	438030.86	39°42'01.760"N	00°12'25.636"W	1953.25	201.683	5.9
9593	88.92	139.08	8231.92	1079.1	-1863.39	-679.74	1769583.6	437984.52	39°42'01.285"N	00°12'25.095"W	1983.5	200.041	0.05
9657	89.11	140.44	8233.02	1142.98	-1912.24	-638.4	1769624.94	437939.68	39°42'00.806"N	00°12'24.561"W	2013.99	198.462	2.15
9719	90.22	141.81	8233.38	1204.95	-1960.5	-599.49	1769663.84	437891.41	39°42'00.332"N	00°12'24.058"W	2050.11	197.203	2.84
9782	89.11	143.16	8233.75	1267.94	-2010.47	-561.13	1769702.2	437843.45	39°41'59.841"N	00°12'23.562"W	2087.31	195.595	2.77
9845	89.57	146.58	8234.48	1330.89	-2061.99	-524.88	1769738.45	437795.94	39°41'59.335"N	00°12'23.093"W	2124.74	194.281	5.48
9909	89.38	147.4	8235.07	1394.73	-2115.65	-490.02	1769773.31	437748.27	39°41'58.807"N	00°12'22.642"W	2161.56	193.041	1.32
9972	88.65	145.63	8236.15	1457.6	-2168.19	-455.27	1769808.0						

61-01680

Table with 15 columns: Station ID, Northing, Easting, Grid East, Grid North, Latitude, Longitude, Shape, Comment. Contains a list of 16520 stations with their respective coordinates and shapes.

TARGETS

Table with 10 columns: Name, MD, TVD, North, East, Grid East, Grid North, Latitude, Longitude, Shape, Comment. Lists target points for the well, including boundary and LP Rev 2 points.

WELLPATH COMPOSITION

Table with 4 columns: Log Name/Comment, Start MD, End MD, Pos Unc Model. Details the well path composition for the well, including gyros and curve segments.

COMMENTS

Wellpath general comments
AP: 47-061-01680-0000
Rig: Pioneer 63
BHI Job #: 6977603
Duration: 03.16.2015 - 03.23.2015
VES Gyro 100°-5787°

Received
Office of Oil & Gas
OCT 07 2015

10/30/2015

61-01680

GHI AT Curve <8-1/2> (8795)(5926-16493)  
Projected MD at TD: 16520'

Received  
Office of Oil & Gas  
OCT 07 2015

10/30/2015

61-01680

### Perforation Record

Stage Number	Report Date	Perforated from MD ft	Perforated to MD ft	Number of Perforations	Formation
1	6/27/2015	16,429	16,271	40	Marcellus Shale
2	6/27/2015	16,231	16,072	40	Marcellus Shale
3	6/27/2015	16,030	15,872	40	Marcellus Shale
4	6/28/2015	15,830	15,673	40	Marcellus Shale
5	6/28/2015	15,631	15,475	40	Marcellus Shale
6	6/28/2015	15,431	15,273	40	Marcellus Shale
7	6/28/2015	15,231	15,074	40	Marcellus Shale
8	6/28/2015	15,034	14,874	40	Marcellus Shale
9	6/28/2015	14,832	14,675	40	Marcellus Shale
10	6/29/2015	14,631	14,475	40	Marcellus Shale
11	6/29/2015	14,433	14,275	40	Marcellus Shale
12	6/29/2015	14,237	14,076	40	Marcellus Shale
13	6/29/2015	14,034	13,876	40	Marcellus Shale
14	6/29/2015	13,830	13,677	40	Marcellus Shale
15	7/2/2015	13,635	13,477	40	Marcellus Shale
16	7/3/2015	13,435	13,277	40	Marcellus Shale
17	7/3/2015	13,235	13,078	40	Marcellus Shale
18	7/3/2015	13,036	12,878	40	Marcellus Shale
19	7/3/2015	12,836	12,679	40	Marcellus Shale
20	7/4/2015	12,637	12,479	40	Marcellus Shale
21	7/4/2015	12,437	12,279	40	Marcellus Shale
22	7/4/2015	12,237	12,080	40	Marcellus Shale
23	7/4/2015	12,036	11,880	40	Marcellus Shale
24	7/4/2015	11,838	11,681	40	Marcellus Shale
25	7/5/2015	11,639	11,481	40	Marcellus Shale
26	7/5/2015	11,439	11,281	40	Marcellus Shale
27	7/5/2015	11,239	11,082	40	Marcellus Shale
28	7/6/2015	11,040	10,882	40	Marcellus Shale
29	7/6/2015	10,840	10,683	40	Marcellus Shale
30	7/6/2015	10,641	10,483	40	Marcellus Shale
31	7/6/2015	10,441	10,285	40	Marcellus Shale
32	7/7/2015	10,241	10,084	40	Marcellus Shale
33	7/7/2015	10,042	9,884	40	Marcellus Shale
34	7/7/2015	9,844	9,685	40	Marcellus Shale
35	7/7/2015	9,643	9,485	40	Marcellus Shale
36	7/8/2015	9,445	9,285	40	Marcellus Shale
37	7/7/2015	9,243	9,086	40	Marcellus Shale
38	7/9/2015	9,042	8,886	40	Marcellus Shale

Received  
Office of Oil & Gas  
OCT 27 2015

10/30/2015

61-01680

Stimulation Record							
Stage Number	Report Date	Avg Treating Rate (BPM)	Avg Treating Pressure (psi)	Breakdown Pressure (psi)	ISIP (psi)	Total Proppant Amount (lbs)	Total Clean Fluid (Bbls)
1	6/27/2015	80	9,027	7,111	5,230	400,220	9,013
2	6/27/2015	80	9,060	6,413	5,160	402,460	9,241
3	6/27/2015	78	8,950	8,800	5,850	399,780	8,794
4	6/28/2015	78	9,062	5,145	5,748	400,600	8,823
5	6/28/2015	78	9,157	8,451	5,783	397,940	8,581
6	6/28/2015	79	9,108	6,580	6,022	406,760	8,944
7	6/28/2015	77	8,896	8,921	5,816	403,920	8,756
8	6/28/2015	78	9,055	8,862	5,885	400,160	8,772
9	6/28/2015	77	8,976	9,164	5,402	399,860	8,548
10	6/29/2015	83	9,059	8,987	5,628	403,660	8,145
11	6/29/2015	79	9,006	8,900	5,229	397,180	7,771
12	6/29/2015	78	8,975	8,950	5,204	399,280	7,938
13	6/29/2015	79	8,735	9,082	5,507	400,500	7,875
14	6/29/2015	81	8,905	9,006	5,815	396,440	7,422
15	7/2/2015	82	8,926	7,887	5,815	401,800	7,846
16	7/3/2015	88	8,985	7,718	5,245	402,100	7,491
17	7/3/2015	86	8,986	7,458	5,480	400,620	7,548
18	7/3/2015	82	9,032	8,600	5,402	399,620	7,751
19	7/3/2015	87	9,183	7,300	5,437	400,500	8,027
20	7/4/2015	92	9,173	7,326	5,574	401,120	7,607
21	7/4/2015	92	9,087	7,772	6,175	400,820	7,463
22	7/4/2015	91	9,148	7,234	6,304	401,800	7,469
23	7/4/2015	90	9,170	7,054	5,487	401,280	7,720
24	7/4/2015	90	9,085	7,021	6,183	408,000	7,492
25	7/5/2015	85	9,042	7,166	NA	317,260	7,802
26	7/5/2015	95	9,046	7,118	5,625	401,620	7,556
27	7/5/2015	92	9,098	7,554	5,840	402,280	9,080
28	7/6/2015	86	8,637	6,609	NA	400,960	7,461
29	7/6/2015	94	9,072	7,056	5,652	395,820	7,404
30	7/6/2015	92	9,153	7,388	5,131	401,678	7,407
31	7/6/2015	94	9,027	7,308	5,528	400,419	7,501
32	7/7/2015	94	8,943	7,122	5,383	399,532	7,438
33	7/7/2015	92	9,191	6,926	6,117	400,766	9,471
34	7/7/2015	94	8,939	6,841	6,264	400,337	7,639
35	7/7/2015	93	8,837	7,362	5,402	398,351	7,958
36	7/8/2015	92	8,986	8,198	5,335	403,040	7,936
37	7/7/2015	94	8,773	6,877	5,023	402,664	7,477
38	7/9/2015	90	8,857	7,950	5,102	404,660	8,225

Received  
Office of Oil & Gas  
OCT 17

10/30/2015