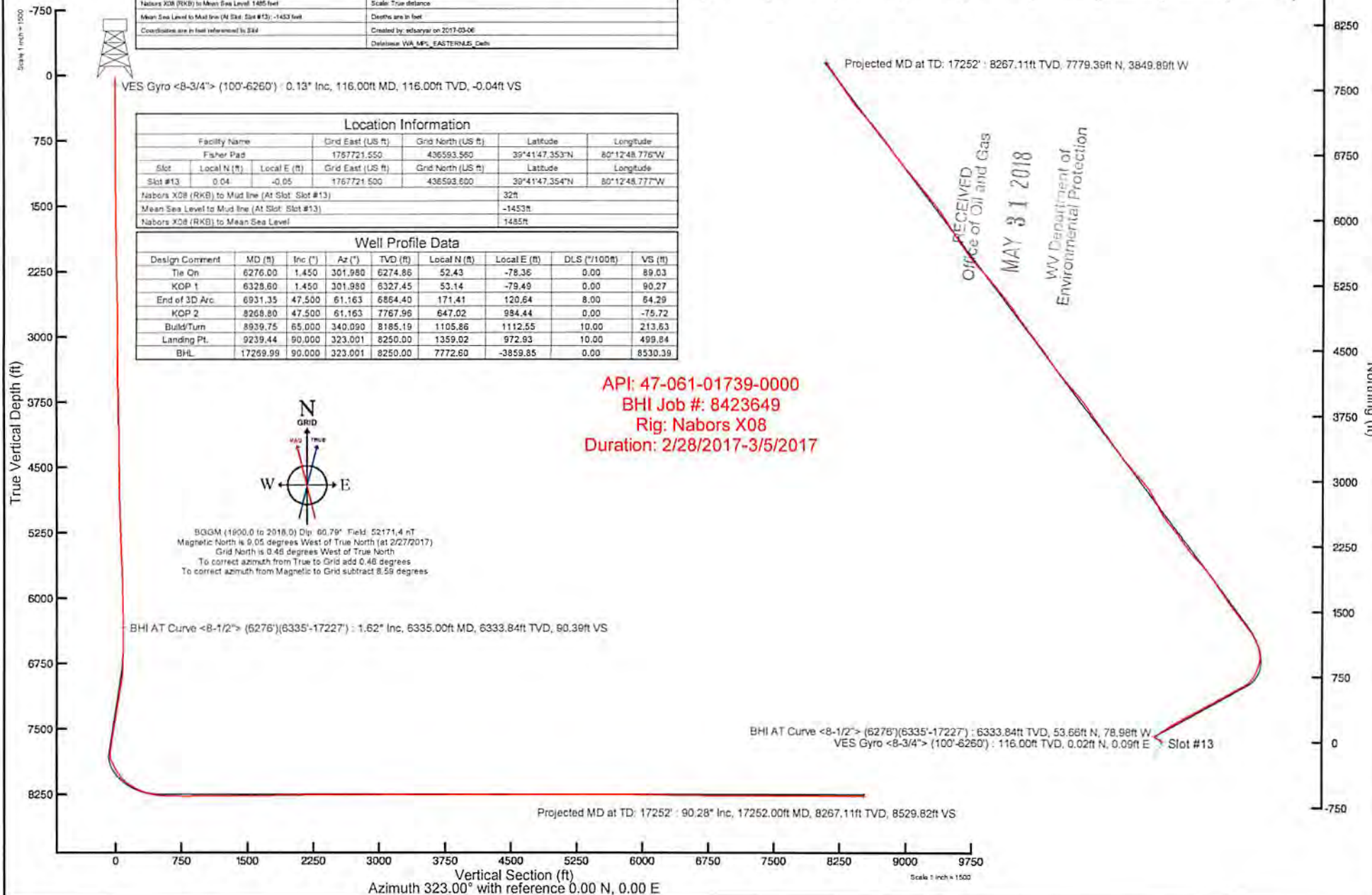
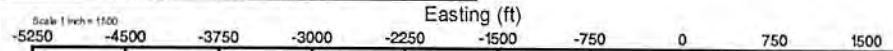


NORTHEAST NATURAL ENERGY, LLC

Location: Monongalia County, WV
 Field: Monongalia
 Facility: Fisher Pad

Slot: Slot #13
 Well: Fisher 13H
 Wellbore: Fisher 13H PWB

Plot reference wellpath is Fisher 13H PWB Rev 0.0	Grid System: NAD83 / Lambert West Virginia SP, Northern Zone (4701), US feet
True vertical depths are referenced to Nabors X08 (RKB)	* Wellbore was transformed from a different geodetic datum
Measured depths are referenced to Nabors X08 (RKB)	North Reference: Grid North
Nabors X08 (RKB) to Mean Sea Level: 1485 feet	Scale: True distance
Mean Sea Level to Mud line (At Slot: Slot #13): -1433 feet	Depths are in feet
Coordinates are in feet referenced to B44	Created by: eduboyar on 2017-03-06
	Delivered: WA_MPS_EASTERNUS_Delta



Location Information					
Facility Name	Grid East (US ft)	Grid North (US ft)	Latitude	Longitude	
Fisher Pad	1767721.550	436593.560	39°41'47.353"N	80°12'48.776"W	
Slot	Local N (ft)	Local E (ft)	Grid East (US ft)	Grid North (US ft)	Latitude
Slot #13	0.04	-0.05	1767721.500	436593.600	39°41'47.354"N
Nabors X08 (RKB) to Mud line (At Slot: Slot #13)			32ft		
Mean Sea Level to Mud line (At Slot: Slot #13)			-1453ft		
Nabors X08 (RKB) to Mean Sea Level			1485ft		

Well Profile Data								
Design Comment	MD (ft)	Inc (°)	Az (°)	TVD (ft)	Local N (ft)	Local E (ft)	DLS (°/100ft)	VS (ft)
Tie On	6276.00	1.450	301.990	6274.86	52.43	-78.36	0.00	89.03
KOP 1	6328.80	1.450	301.990	6327.45	53.14	-79.49	0.00	90.27
End of 3D Arc	6931.35	47.500	61.163	6864.40	171.41	120.64	8.00	64.29
KOP 2	8268.80	47.500	61.163	7767.96	647.02	984.44	0.00	-75.72
Build/Turn	8939.75	65.000	340.090	8185.19	1105.86	1112.55	10.00	213.63
Landing Pt.	9239.44	90.000	323.001	8250.00	1359.02	972.93	10.00	499.84
BHL	17269.99	90.000	323.001	8250.00	7772.60	-3859.85	0.00	8530.39



BGGM (1900.0 to 2016.0) Dip: 60.79° Field: 52171.4 nT
 Magnetic North is 0.05 degrees West of True North (at 2/27/2017)
 Grid North is 0.46 degrees West of True North
 To correct azimuth from True to Grid add 0.46 degrees
 To correct azimuth from Magnetic to Grid subtract 8.59 degrees

API: 47-061-01739-0000
 BHI Job #: 8423649
 Rig: Nabors X08
 Duration: 2/28/2017-3/5/2017

RECEIVED
 Office of Oil and Gas
 MAY 31 2018
 WV Department of
 Environmental Protection



Actual Wellpath Report

Fisher 13H AWP Proj: 17252'

Page 1 of 10

RECEIVED
 Office of Oil and Gas
 MAY 31 2018
 Department of Environmental Protection



REFERENCE WELLPATH IDENTIFICATION

Operator	NORTHEAST NATURAL ENERGY, LLC	Slot	Slot #13
Area	Monongalia County, WV	Well	Fisher 13H
Field	Monongalia	Wellbore	Fisher 13H AWB
Facility	Fisher Pad		

REPORT SETUP INFORMATION

Projection System	NAD83 / Lambert West Virginia SP, Northern Zone (4701), US feet	Software System	WellArchitect® 5.0
North Reference	Grid	User	Edsaryar
Scale	0.999942	Report Generated	3/6/2017 at 11:17:13 AM
Convergence at slot	0.46° West	Database/Source file	WA_MPL_EASTERNUS_Defn/Fisher_13H_AWP_Proj_17252_.xml

WELLPATH LOCATION

	Local coordinates		Grid coordinates		Geographic coordinates	
	North[ft]	East[ft]	Easting[US ft]	Northing[US ft]	Latitude	Longitude
Slot Location	0.04	-0.05	1767721.50	436593.60	39°41'47.354"N	80°12'48.777"W
Facility Reference Pt			1767721.55	436593.56	39°41'47.353"N	80°12'48.776"W
Field Reference Pt			1777685.71	440640.65	39°42'28.114"N	80°10'41.690"W

WELLPATH DATUM

Calculation method	Minimum curvature	Nabors X08 (RKB) to Facility Vertical Datum	1485.00ft
Horizontal Reference Pt	Slot	Nabors X08 (RKB) to Mean Sea Level	1485.00ft
Vertical Reference Pt	Nabors X08 (RKB)	Nabors X08 (RKB) to Mud Line at Slot (Slot #13)	32.00ft
MD Reference Pt	Nabors X08 (RKB)	Section Origin	N 0.00, E 0.00 ft
Field Vertical Reference	Mean Sea Level	Section Azimuth	323.00°



Actual Wellpath Report

Fisher 13H AWP Proj: 17252'
Page 2 of 10

RECEIVED
Office of Oil and Gas
MAY 31 2018
WV Department of
Environmental Protection



REFERENCE WELLPATH IDENTIFICATION			
Operator	NORTHEAST NATURAL ENERGY, LLC	Slot	Slot #13
Area	Monongalia County, WV	Well	Fisher 13H
Field	Monongalia	Wellbore	Fisher 13H AWB
Facility	Fisher Pad		

WELLPATH DATA (183 stations) † = interpolated/extrapolated station															
MD [ft]	Inclination [°]	Azimuth [°]	TVD [ft]	Vert Sect [ft]	North [ft]	East [ft]	Grid East [US ft]	Grid North [US ft]	Latitude	Longitude	Closure Dist [ft]	Closure Dir [°]	DLS [°/100ft]	Build Rate [°/100ft]	Turn Rate [°/100ft]
0.00†	0.000	78.400	0.00	0.00	0.00	0.00	1767721.50	436593.60	39°41'47.354"N	80°12'48.777"W	0.00	0.000	0.00	0.00	0.00
32.00	0.000	78.400	32.00	0.00	0.00	0.00	1767721.50	436593.60	39°41'47.354"N	80°12'48.777"W	0.00	0.000	0.00	0.00	0.00
116.00	0.130	78.400	116.00	-0.04	0.02	0.09	1767721.59	436593.62	39°41'47.354"N	80°12'48.776"W	0.10	78.400	0.15	0.15	93.33
216.00	0.400	269.780	216.00	0.12	0.04	-0.14	1767721.36	436593.64	39°41'47.354"N	80°12'48.779"W	0.15	285.697	0.53	0.27	-168.62
316.00	0.510	260.340	316.00	0.53	-0.04	-0.93	1767720.57	436593.56	39°41'47.353"N	80°12'48.789"W	0.93	267.826	0.13	0.11	-9.44
416.00	0.280	200.380	415.99	0.61	-0.34	-1.46	1767720.04	436593.26	39°41'47.350"N	80°12'48.796"W	1.50	256.891	0.44	-0.23	-59.96
516.00	0.210	137.540	515.99	0.29	-0.70	-1.42	1767720.08	436592.90	39°41'47.347"N	80°12'48.795"W	1.58	243.611	0.26	-0.07	-62.84
616.00	0.190	276.340	615.99	0.22	-0.82	-1.46	1767720.04	436592.78	39°41'47.345"N	80°12'48.796"W	1.67	240.650	0.37	-0.02	138.80
716.00	0.260	240.630	715.99	0.37	-0.91	-1.82	1767719.68	436592.69	39°41'47.344"N	80°12'48.800"W	2.04	243.369	0.15	0.07	-35.71
816.00	0.290	176.720	815.99	0.19	-1.28	-2.00	1767719.50	436592.32	39°41'47.341"N	80°12'48.803"W	2.38	237.496	0.29	0.03	-63.91
916.00	0.230	308.970	915.99	0.17	-1.40	-2.15	1767719.35	436592.20	39°41'47.340"N	80°12'48.804"W	2.56	236.814	0.48	-0.06	132.25
1016.00	0.420	283.730	1015.99	0.65	-1.19	-2.66	1767718.84	436592.41	39°41'47.342"N	80°12'48.811"W	2.91	245.876	0.23	0.19	-25.24
1116.00	0.120	306.010	1115.99	1.03	-1.04	-3.10	1767718.40	436592.56	39°41'47.343"N	80°12'48.817"W	3.27	251.418	0.31	-0.30	22.28
1216.00	0.460	292.570	1215.99	1.48	-0.83	-3.55	1767717.95	436592.77	39°41'47.345"N	80°12'48.822"W	3.65	256.914	0.34	0.34	-13.44
1316.00	0.120	346.900	1315.99	1.92	-0.57	-3.95	1767717.55	436593.03	39°41'47.348"N	80°12'48.827"W	3.99	261.784	0.40	-0.34	54.33
1416.00	0.530	314.560	1415.98	2.47	-0.14	-4.30	1767717.20	436593.46	39°41'47.352"N	80°12'48.832"W	4.30	268.088	0.43	0.41	-32.34
1516.00	0.630	331.070	1515.98	3.48	0.66	-4.90	1767716.60	436594.26	39°41'47.360"N	80°12'48.840"W	4.94	277.699	0.19	0.10	16.51
1616.00	0.740	336.140	1615.97	4.65	1.73	-5.42	1767716.08	436595.33	39°41'47.370"N	80°12'48.847"W	5.69	287.725	0.13	0.11	5.07
1716.00	0.820	330.400	1715.96	5.99	2.95	-6.04	1767715.46	436596.55	39°41'47.382"N	80°12'48.855"W	6.72	296.008	0.11	0.08	-5.74
1816.00	0.840	326.420	1815.95	7.43	4.18	-6.80	1767714.70	436597.78	39°41'47.394"N	80°12'48.864"W	7.98	301.583	0.06	0.02	-3.98
1916.00	0.890	325.020	1915.94	8.94	5.43	-7.65	1767713.85	436599.03	39°41'47.407"N	80°12'48.875"W	9.38	305.354	0.05	0.05	-1.40
2016.00	0.940	309.990	2015.93	10.51	6.59	-8.72	1767712.78	436600.19	39°41'47.418"N	80°12'48.889"W	10.93	307.071	0.24	0.05	-15.03
2116.00	1.040	296.980	2115.91	12.13	7.53	-10.16	1767711.34	436601.13	39°41'47.427"N	80°12'48.908"W	12.65	306.540	0.25	0.10	-13.01
2216.00	1.130	303.910	2215.89	13.87	8.49	-11.79	1767709.71	436602.09	39°41'47.437"N	80°12'48.929"W	14.53	305.767	0.16	0.09	6.93
2316.00	1.190	317.360	2315.87	15.84	9.80	-13.31	1767708.19	436603.40	39°41'47.449"N	80°12'48.948"W	16.53	306.380	0.28	0.06	13.45
2416.00	1.550	321.260	2415.85	18.22	11.62	-14.86	1767706.64	436605.22	39°41'47.467"N	80°12'48.968"W	18.86	308.036	0.37	0.36	3.90
2516.00	1.140	306.900	2515.82	20.53	13.28	-16.50	1767705.00	436606.87	39°41'47.484"N	80°12'48.989"W	21.18	308.819	0.53	-0.41	-14.36
2616.00	0.750	321.050	2615.80	22.14	14.38	-17.71	1767703.79	436607.98	39°41'47.494"N	80°12'49.005"W	22.81	309.084	0.45	-0.39	14.15
2716.00	0.770	334.130	2715.80	23.46	15.50	-18.41	1767703.09	436609.09	39°41'47.505"N	80°12'49.014"W	24.06	310.084	0.17	0.02	13.08
2816.00	0.530	292.970	2815.79	24.52	16.28	-19.13	1767702.37	436609.88	39°41'47.513"N	80°12'49.023"W	25.12	310.398	0.51	-0.24	-41.16



Actual Wellpath Report

Fisher 13H AWP Proj: 17252'
Page 3 of 10

RECEIVED
of Oil and Gas
31 2018
Department of
State Collection



REFERENCE WELLPATH IDENTIFICATION			
Operator	NORTHEAST NATURAL ENERGY, LLC	Slot	Slot #13
Area	Monongalia County, WV	Well	Fisher 13H
Field	Monongalia	Wellbore	Fisher 13H AWB
Facility	Fisher Pad		

WELLPATH DATA (183 stations)																
MD [ft]	Inclination [°]	Azimuth [°]	TVD [ft]	Vert Sect [ft]	North [ft]	East [ft]	Grid East [US ft]	Grid North [US ft]	Latitude	Longitude	Closure Dist [ft]	Closure Dir [°]	DLS [°/100ft]	Build Rate [°/100ft]	Turn Rate [°/100ft]	
2916.00	0.300	300.560	2915.79	25.16	16.59	-19.78	1767701.72	436610.19	39°41'47.516"N	80°12'49.032"W	25.82	309.992	0.24	-0.23	7.59	
3016.00	0.570	309.690	3015.78	25.88	17.04	-20.39	1767701.11	436610.64	39°41'47.520"N	80°12'49.040"W	26.58	309.894	0.28	0.27	9.13	
3116.00	0.570	320.900	3115.78	26.86	17.75	-21.09	1767700.41	436611.35	39°41'47.527"N	80°12'49.049"W	27.56	310.087	0.11	0.00	11.21	
3216.00	0.760	316.980	3215.77	28.02	18.62	-21.85	1767699.65	436612.22	39°41'47.536"N	80°12'49.058"W	28.71	310.432	0.20	0.19	-3.92	
3316.00	0.710	290.940	3315.76	29.21	19.33	-22.88	1767698.62	436612.92	39°41'47.543"N	80°12'49.072"W	29.95	310.182	0.33	-0.05	-26.04	
3416.00	0.420	304.970	3415.76	30.08	19.76	-23.76	1767697.74	436613.36	39°41'47.547"N	80°12'49.083"W	30.90	309.741	0.32	-0.29	14.03	
3516.00	0.840	319.070	3515.75	31.16	20.52	-24.54	1767696.96	436614.12	39°41'47.554"N	80°12'49.093"W	31.99	309.899	0.44	0.42	14.10	
3616.00	0.880	296.070	3615.74	32.58	21.41	-25.71	1767695.79	436615.01	39°41'47.563"N	80°12'49.108"W	33.46	309.785	0.35	0.04	-23.00	
3716.00	0.460	297.660	3715.74	33.62	21.94	-26.76	1767694.74	436615.53	39°41'47.568"N	80°12'49.122"W	34.60	309.344	0.42	-0.42	1.59	
3816.00	0.800	312.020	3815.73	34.67	22.59	-27.63	1767693.87	436616.19	39°41'47.575"N	80°12'49.133"W	35.69	309.266	0.37	0.34	14.36	
3916.00	0.850	295.420	3915.72	36.01	23.38	-28.82	1767692.68	436616.97	39°41'47.582"N	80°12'49.148"W	37.11	309.044	0.24	0.05	-16.60	
4016.00	0.590	306.050	4015.71	37.16	24.00	-29.91	1767691.59	436617.60	39°41'47.588"N	80°12'49.162"W	38.34	308.742	0.29	-0.26	10.63	
4116.00	0.770	301.260	4115.70	38.28	24.65	-30.90	1767690.60	436618.25	39°41'47.595"N	80°12'49.175"W	39.53	308.580	0.19	0.18	-4.79	
4216.00	0.510	303.010	4215.70	39.32	25.24	-31.85	1767689.66	436618.84	39°41'47.601"N	80°12'49.187"W	40.64	308.399	0.26	-0.26	1.75	
4316.00	0.780	307.290	4315.69	40.40	25.89	-32.76	1767688.74	436619.49	39°41'47.607"N	80°12'49.199"W	41.76	308.323	0.27	0.27	4.28	
4416.00	0.600	279.580	4415.68	41.43	26.39	-33.82	1767687.68	436619.99	39°41'47.612"N	80°12'49.212"W	42.90	307.971	0.37	-0.18	-27.71	
4516.00	0.730	308.950	4515.68	42.43	26.88	-34.83	1767686.67	436620.48	39°41'47.617"N	80°12'49.225"W	44.00	307.661	0.36	0.13	29.37	
4616.00	0.880	279.260	4615.67	43.60	27.41	-36.08	1767685.42	436621.00	39°41'47.622"N	80°12'49.241"W	45.31	307.217	0.44	0.15	-29.69	
4716.00	0.860	283.360	4715.66	44.74	27.70	-37.57	1767683.93	436621.30	39°41'47.624"N	80°12'49.261"W	46.68	306.403	0.07	-0.02	4.10	
4816.00	0.990	297.930	4815.64	46.10	28.28	-39.07	1767682.44	436621.88	39°41'47.630"N	80°12'49.280"W	48.23	305.902	0.27	0.13	14.57	
4916.00	1.120	287.910	4915.63	47.68	28.99	-40.76	1767680.74	436622.58	39°41'47.637"N	80°12'49.301"W	50.01	305.419	0.23	0.13	-10.02	
5016.00	1.630	290.670	5015.60	49.68	29.79	-43.02	1767678.48	436623.39	39°41'47.645"N	80°12'49.330"W	52.33	304.701	0.51	0.51	2.76	
5116.00	2.080	293.410	5115.55	52.46	31.01	-46.02	1767675.49	436624.61	39°41'47.656"N	80°12'49.369"W	55.49	303.978	0.46	0.45	2.74	
5216.00	2.280	305.470	5215.47	55.93	32.89	-49.30	1767672.20	436626.48	39°41'47.675"N	80°12'49.411"W	59.26	303.706	0.50	0.20	12.06	
5316.00	2.160	297.740	5315.40	59.54	34.92	-52.59	1767668.91	436628.52	39°41'47.695"N	80°12'49.453"W	63.13	303.584	0.32	-0.12	-7.73	
5416.00	2.460	307.530	5415.32	63.31	37.10	-55.96	1767665.55	436630.70	39°41'47.716"N	80°12'49.497"W	67.14	303.546	0.49	0.30	9.79	
5516.00	2.400	308.050	5515.23	67.40	39.70	-59.31	1767662.19	436633.30	39°41'47.741"N	80°12'49.540"W	71.37	303.798	0.06	-0.06	0.52	
5616.00	2.350	309.490	5615.14	71.42	42.30	-62.54	1767658.96	436635.89	39°41'47.767"N	80°12'49.581"W	75.50	304.070	0.08	-0.05	1.44	
5716.00	2.120	305.590	5715.07	75.17	44.68	-65.63	1767655.88	436638.27	39°41'47.790"N	80°12'49.621"W	79.39	304.245	0.28	-0.23	-3.90	
5816.00	1.690	295.510	5815.01	78.25	46.39	-68.46	1767653.04	436639.98	39°41'47.807"N	80°12'49.658"W	82.70	304.120	0.54	-0.43	-10.08	



Actual Wellpath Report

Fisher 13H AWP Proj: 17252'
Page 4 of 10

RECEIVED
Office of Oil and Gas
MAY 31 2018
WV Department of
Environmental Protection



REFERENCE WELLPATH IDENTIFICATION			
Operator	NORTHEAST NATURAL ENERGY, LLC	Slot	Slot #13
Area	Monongalia County, WV	Well	Fisher 13H
Field	Monongalia	Wellbore	Fisher 13H AWB
Facility	Fisher Pad		

WELLPATH DATA (183 stations)															
MD [ft]	Inclination [°]	Azimuth [°]	TVD [ft]	Vert Sect [ft]	North [ft]	East [ft]	Grid East [US ft]	Grid North [US ft]	Latitude	Longitude	Closure Dist [ft]	Closure Dir [°]	DLS [°/100ft]	Build Rate [°/100ft]	Turn Rate [°/100ft]
5916.00	1.490	303.320	5914.97	80.78	47.74	-70.88	1767650.63	436641.33	39°41'47.820"N	80°12'49.689"W	85.45	303.960	0.29	-0.20	7.81
6016.00	1.560	306.180	6014.94	83.31	49.25	-73.06	1767648.44	436642.85	39°41'47.835"N	80°12'49.717"W	88.11	303.985	0.10	0.07	2.86
6116.00	1.410	294.580	6114.90	85.69	50.57	-75.28	1767646.22	436644.17	39°41'47.847"N	80°12'49.745"W	90.69	303.891	0.34	-0.15	-11.60
6216.00	1.160	305.830	6214.88	87.74	51.67	-77.22	1767644.28	436645.27	39°41'47.858"N	80°12'49.770"W	92.91	303.789	0.35	-0.25	11.25
6276.00	1.450	301.980	6274.86	89.03	52.43	-78.36	1767643.15	436646.03	39°41'47.866"N	80°12'49.785"W	94.28	303.788	0.50	0.48	-6.42
6335.00	1.620	0.370	6333.84	90.39	53.66	-78.98	1767642.52	436647.26	39°41'47.878"N	80°12'49.793"W	95.49	304.191	2.55	0.29	98.97
6429.00	11.400	56.090	6427.16	90.95	60.19	-71.24	1767650.26	436653.79	39°41'47.943"N	80°12'49.695"W	93.27	310.193	11.25	10.40	59.28
6524.00	17.310	53.120	6519.16	90.41	73.92	-52.13	1767669.37	436667.52	39°41'48.080"N	80°12'49.451"W	90.46	324.808	6.27	6.22	-3.13
6619.00	22.390	57.790	6608.49	88.87	92.06	-25.50	1767696.00	436685.66	39°41'48.261"N	80°12'49.113"W	95.53	344.519	5.60	5.35	4.92
6713.00	28.570	56.950	6693.31	85.82	113.88	8.52	1767730.02	436707.48	39°41'48.480"N	80°12'48.680"W	114.20	4.280	6.59	6.57	-0.89
6807.00	34.380	55.060	6773.44	83.32	141.37	49.16	1767770.65	436734.96	39°41'48.755"N	80°12'48.163"W	149.67	19.173	6.27	6.18	-2.01
6902.00	42.770	57.420	6847.65	79.86	174.16	98.41	1767819.91	436767.75	39°41'49.082"N	80°12'47.536"W	200.04	29.470	8.97	8.83	2.48
6996.00	47.780	58.370	6913.78	74.14	209.62	154.98	1767876.47	436803.21	39°41'49.437"N	80°12'46.816"W	260.69	36.477	5.38	5.33	1.01
7090.00	47.770	61.850	6976.96	65.53	244.30	215.31	1767936.80	436837.88	39°41'49.785"N	80°12'46.047"W	325.64	41.391	2.74	-0.01	3.70
7185.00	47.820	61.720	7040.78	54.78	277.57	277.32	1767998.80	436871.15	39°41'50.118"N	80°12'45.258"W	392.36	44.974	0.11	0.05	-0.14
7280.00	47.870	61.460	7104.54	44.26	311.08	339.26	1768060.74	436904.66	39°41'50.454"N	80°12'44.468"W	460.29	47.482	0.21	0.05	-0.27
7373.00	47.820	61.660	7166.96	34.00	343.91	399.89	1768121.36	436937.49	39°41'50.784"N	80°12'43.696"W	527.43	49.304	0.17	-0.05	0.22
7467.00	47.790	61.800	7230.09	23.43	376.89	461.22	1768182.69	436970.47	39°41'51.114"N	80°12'42.915"W	595.63	50.746	0.11	-0.03	0.15
7561.00	47.800	61.190	7293.24	13.14	410.12	522.41	1768243.88	437003.70	39°41'51.448"N	80°12'42.136"W	664.16	51.866	0.48	0.01	-0.65
7656.00	47.830	61.210	7357.03	3.10	444.03	584.10	1768305.56	437037.61	39°41'51.788"N	80°12'41.350"W	733.71	52.758	0.04	0.03	0.02
7750.00	47.790	60.990	7420.16	-6.71	477.69	645.07	1768366.53	437071.26	39°41'52.125"N	80°12'40.573"W	802.69	53.479	0.18	-0.04	-0.23
7844.00	47.840	60.960	7483.29	-16.37	511.49	705.97	1768427.43	437105.06	39°41'52.464"N	80°12'39.797"W	871.79	54.076	0.06	0.05	-0.03
7939.00	47.780	61.220	7547.09	-26.28	545.52	767.59	1768489.04	437139.08	39°41'52.805"N	80°12'39.013"W	941.69	54.599	0.21	-0.06	0.27
8033.00	47.830	61.640	7610.22	-36.49	578.82	828.75	1768550.20	437172.39	39°41'53.139"N	80°12'38.234"W	1010.87	55.069	0.34	0.05	0.45
8128.00	47.820	61.680	7674.01	-47.09	612.24	890.72	1768612.16	437205.80	39°41'53.474"N	80°12'37.444"W	1080.84	55.497	0.03	-0.01	0.04
8223.00	47.780	61.300	7737.82	-57.48	645.83	952.56	1768674.00	437239.39	39°41'53.811"N	80°12'36.656"W	1150.86	55.863	0.30	-0.04	-0.40
8317.00	47.780	48.060	7801.14	-59.51	685.91	1009.12	1768730.56	437279.47	39°41'54.211"N	80°12'35.937"W	1220.16	55.796	10.42	0.00	-14.09
8412.00	47.750	32.660	7865.21	-44.21	739.20	1054.41	1768775.85	437332.75	39°41'54.741"N	80°12'35.363"W	1287.71	54.968	11.99	-0.03	-16.21
8507.00	47.720	25.200	7929.15	-15.58	800.64	1088.37	1768809.81	437394.19	39°41'55.351"N	80°12'34.935"W	1351.14	53.661	5.81	-0.03	-7.85
8602.00	47.820	17.960	7993.05	21.05	865.97	1114.21	1768835.64	437459.52	39°41'55.999"N	80°12'34.611"W	1411.16	52.145	5.64	0.11	-7.62



Actual Wellpath Report

Fisher 13H AWP Proj: 17252'
Page 5 of 10

RECEIVED
Office of Oil and Gas
MAY 31 2018
WV Department of Environmental Protection



REFERENCE WELLPATH IDENTIFICATION			
Operator	NORTHEAST NATURAL ENERGY, LLC	Slot	Slot #13
Area	Monongalia County, WV	Well	Fisher 13H
Field	Monongalia	Wellbore	Fisher 13H AWB
Facility	Fisher Pad		

WELLPATH DATA (183 stations)															
MD [ft]	Inclination [°]	Azimuth [°]	TVD [ft]	Vert Sect [ft]	North [ft]	East [ft]	Grid East [US ft]	Grid North [US ft]	Latitude	Longitude	Closure Dist [ft]	Closure Dir [°]	DLS [°/100ft]	Build Rate [°/100ft]	Turn Rate [°/100ft]
8697.00	49.810	7.660	8055.70	67.14	935.53	1129.93	1768851.36	437529.08	39°41'56.687"N	80°12'34.417"W	1466.95	50.377	8.42	2.09	-10.84
8791.00	55.640	354.820	8112.75	125.86	1010.02	1131.21	1768852.64	437603.56	39°41'57.424"N	80°12'34.408"W	1516.50	48.240	12.50	6.20	-13.66
8885.00	60.680	343.590	8162.44	197.40	1088.20	1116.09	1768837.52	437681.73	39°41'58.195"N	80°12'34.609"W	1558.79	45.725	11.47	5.36	-11.95
8980.00	68.330	333.870	8203.38	279.80	1167.83	1084.84	1768806.27	437761.36	39°41'58.980"N	80°12'35.017"W	1593.96	42.890	12.24	8.05	-10.23
9075.00	73.080	327.760	8234.79	368.56	1246.01	1041.09	1768762.53	437839.54	39°41'59.749"N	80°12'35.585"W	1623.71	39.880	7.86	5.00	-6.43
9170.00	79.480	322.020	8257.33	460.71	1321.40	988.01	1768709.45	437914.92	39°42'00.490"N	80°12'36.271"W	1649.93	36.786	8.93	6.74	-6.04
9264.00	89.020	321.100	8266.74	554.10	1394.56	929.93	1768651.38	437988.08	39°42'01.208"N	80°12'37.022"W	1676.18	33.696	10.20	10.15	-0.98
9358.00	87.820	322.310	8269.33	648.04	1468.31	871.70	1768593.15	438061.82	39°42'01.932"N	80°12'37.774"W	1707.57	30.697	1.81	-1.28	1.29
9453.00	88.830	323.030	8272.11	742.99	1543.81	814.12	1768535.57	438137.32	39°42'02.674"N	80°12'38.518"W	1745.32	27.805	1.31	1.06	0.76
9548.00	90.890	325.760	8272.34	837.95	1621.04	758.82	1768480.27	438214.54	39°42'03.433"N	80°12'39.234"W	1789.86	25.085	3.60	2.17	2.87
9642.00	90.980	325.030	8270.80	931.86	1698.40	705.44	1768426.90	438291.90	39°42'04.193"N	80°12'39.924"W	1839.08	22.556	0.78	0.10	-0.78
9737.00	90.460	324.690	8269.61	1026.80	1776.08	650.77	1768372.23	438369.57	39°42'04.957"N	80°12'40.632"W	1891.55	20.123	0.65	-0.55	-0.36
9831.00	90.520	326.950	8268.81	1120.68	1853.84	597.97	1768319.43	438447.33	39°42'05.721"N	80°12'41.315"W	1947.89	17.877	2.41	0.06	2.40
9926.00	90.610	323.240	8267.87	1215.59	1931.73	543.62	1768265.08	438525.21	39°42'06.487"N	80°12'42.018"W	2006.76	15.717	3.91	0.09	-3.91
10021.00	90.280	317.480	8267.13	1310.45	2004.85	483.04	1768204.51	438598.33	39°42'07.204"N	80°12'42.801"W	2062.22	13.546	6.07	-0.35	-6.06
10115.00	90.430	317.800	8266.55	1404.03	2074.31	419.70	1768141.18	438667.78	39°42'07.886"N	80°12'43.618"W	2116.34	11.438	0.38	0.16	0.34
10209.00	90.890	319.190	8265.47	1497.74	2144.70	357.42	1768078.89	438738.17	39°42'08.577"N	80°12'44.422"W	2174.28	9.461	1.56	0.49	1.48
10304.00	90.740	321.850	8264.11	1592.63	2218.01	297.03	1768018.51	438811.48	39°42'09.296"N	80°12'45.202"W	2237.81	7.627	2.80	-0.16	2.80
10399.00	90.250	323.240	8263.29	1687.62	2293.42	239.26	1767960.74	438886.88	39°42'10.037"N	80°12'45.949"W	2305.87	5.956	1.55	-0.52	1.46
10494.00	91.020	324.850	8262.24	1782.59	2370.31	183.48	1767904.97	438963.77	39°42'10.793"N	80°12'46.670"W	2377.40	4.426	1.88	0.81	1.69
10588.00	91.080	322.180	8260.52	1876.57	2445.87	127.60	1767849.10	439039.32	39°42'11.535"N	80°12'47.393"W	2449.20	2.986	2.84	0.06	-2.84
10683.00	90.980	320.750	8258.81	1971.51	2520.17	68.43	1767789.93	439113.62	39°42'12.265"N	80°12'48.158"W	2521.10	1.555	1.51	-0.11	-1.51
10777.00	90.520	326.890	8257.58	2065.45	2596.00	12.97	1767734.47	439189.44	39°42'13.010"N	80°12'48.875"W	2596.03	0.286	6.55	-0.49	6.53
10872.00	90.310	333.440	8256.89	2159.65	2678.36	-34.26	1767687.24	439271.80	39°42'13.820"N	80°12'49.488"W	2678.58	359.267	6.90	-0.22	6.89
10967.00	90.710	333.130	8256.04	2253.12	2763.22	-76.97	1767644.54	439356.65	39°42'14.655"N	80°12'50.043"W	2764.29	358.404	0.53	0.42	-0.33
11061.00	89.660	329.250	8255.74	2346.15	2845.56	-122.26	1767599.25	439438.99	39°42'15.465"N	80°12'50.630"W	2848.19	357.540	4.28	-1.12	-4.13
11156.00	90.430	323.850	8255.66	2440.93	2924.80	-174.60	1767546.91	439518.22	39°42'16.244"N	80°12'51.308"W	2930.01	356.584	5.74	0.81	-5.68
11251.00	90.400	317.960	8254.98	2535.82	2998.49	-234.48	1767487.03	439591.91	39°42'16.968"N	80°12'52.082"W	3007.65	355.529	6.20	-0.03	-6.20
11345.00	90.400	318.320	8254.32	2629.48	3068.50	-297.21	1767424.31	439661.92	39°42'17.655"N	80°12'52.891"W	3082.86	354.468	0.38	0.00	0.38
11439.00	90.250	319.250	8253.79	2723.22	3139.21	-359.14	1767362.38	439732.62	39°42'18.349"N	80°12'53.691"W	3159.69	353.473	1.00	-0.16	0.99



Actual Wellpath Report

Fisher 13H AWP Proj: 17252
Page 6 of 10

MAY 31 2018

RECEIVED
Office of Oil and Gas

WV Department of
Environmental Protection

REFERENCE WELLPATH IDENTIFICATION

Operator	NORTHEAST NATURAL ENERGY, LLC
Area	Monongalia County, WV
Field	Monongalia
Facility	Fisher Pad
Slot	Fisher 13H
Slot #13	Fisher 13H AWB

MD	Inclination	Azimuth	TVD	Vert Sect	North	East	Grid East	Grid North	Latitude	Longitude	Closure Dist	Closure Dir	DLS	Build Rate	Turn Rate
(ft)	(°)	(°)	(ft)	(ft)	(ft)	(ft)	(US ft)	(US ft)	(ft)	(ft)	(ft)	(°)	(ft)	(ft/100ft)	(°/100ft)
11534.00	90.150	320.340	8253.46	2818.07	3211.76	-420.47	1767301.06	439805.17	39°42'19.06"N	80°12'54.48"W	3239.17	352.542	1.15	-0.11	1.15
11629.00	90.490	322.310	8252.92	2913.03	3285.93	-479.83	1767241.70	439879.33	39°42'19.78"N	80°12'55.250"W	3320.77	351.692	2.10	0.36	2.07
11723.00	90.430	325.500	8252.17	3007.00	3361.87	-535.20	1767186.33	439955.27	39°42'20.35"N	80°12'55.966"W	3404.20	350.955	3.39	-0.06	3.39
11818.00	90.400	325.370	8251.48	3101.91	3440.10	-589.09	1767132.44	440033.49	39°42'21.304"N	80°12'56.664"W	3490.17	350.283	0.14	-0.03	-0.14
11912.00	89.910	325.390	8251.23	3195.83	3517.45	-642.50	1767079.04	440110.84	39°42'22.064"N	80°12'57.355"W	3575.65	349.648	0.52	-0.52	0.02
12007.00	89.600	324.070	8251.63	3290.78	3595.01	-697.35	1767024.19	440188.40	39°42'22.827"N	80°12'58.065"W	3662.02	349.022	1.43	-0.33	-1.39
12101.00	89.380	325.380	8252.47	3384.73	3671.75	-751.63	1766969.91	440265.13	39°42'23.581"N	80°12'58.767"W	3747.89	348.431	1.41	-0.23	1.39
12196.00	89.570	325.430	8253.34	3479.65	3749.95	-805.57	1766915.98	440343.32	39°42'24.349"N	80°12'59.465"W	3835.50	347.876	0.21	0.20	0.05
12290.00	90.250	325.610	8253.49	3573.55	3827.43	-858.78	1766862.77	440420.80	39°42'25.111"N	80°13'00.154"W	3922.60	347.354	0.75	0.72	0.19
12385.00	90.400	323.410	8252.95	3668.51	3904.78	-913.93	1766807.62	440498.14	39°42'25.871"N	80°13'00.867"W	4010.31	346.827	2.32	0.16	-2.32
12479.00	90.800	318.570	8251.96	3762.42	3977.79	-973.08	1766748.48	440571.15	39°42'26.588"N	80°13'01.632"W	4095.09	346.254	5.17	0.43	-5.15
12574.00	90.460	318.550	8250.92	3857.13	4049.01	-1035.95	1766685.61	440642.36	39°42'27.286"N	80°13'02.443"W	4179.43	345.649	0.36	-0.36	-0.02
12668.00	90.000	319.340	8250.54	3950.89	4119.89	-1097.69	1766623.88	440713.24	39°42'27.982"N	80°13'03.204"W	4263.61	345.081	0.97	-0.49	0.84
12762.00	90.000	320.370	8250.54	4044.75	4191.74	-1158.29	1766563.28	440785.09	39°42'28.687"N	80°13'04.023"W	4348.83	344.553	1.10	0.00	1.10
12852.00	89.630	322.870	8250.85	4139.72	4266.21	-1217.27	1766504.30	440859.55	39°42'29.419"N	80°13'04.785"W	4436.47	344.075	2.66	-0.39	2.63
12952.00	89.480	324.730	8251.59	4234.70	4342.86	-1273.37	1766448.20	440936.20	39°42'30.172"N	80°13'05.511"W	4525.70	343.658	1.96	-0.16	1.96
13047.00	89.750	325.570	8252.23	4329.63	4420.82	-1327.66	1766393.92	441014.16	39°42'30.938"N	80°13'06.214"W	4615.88	343.284	0.93	0.28	0.88
13141.00	90.220	323.060	8252.25	4423.60	4497.17	-1382.48	1766339.10	441090.50	39°42'31.688"N	80°13'06.923"W	4704.87	342.912	2.72	0.50	-2.67
13236.00	90.430	322.780	8251.71	4518.60	4572.96	-1439.76	1766281.83	441166.28	39°42'32.432"N	80°13'07.664"W	4794.25	342.524	0.37	0.22	-0.29
13331.00	90.550	323.800	8250.90	4613.59	4649.11	-1496.55	1766225.04	441242.43	39°42'33.181"N	80°13'08.398"W	4884.04	342.157	1.08	0.13	1.07
13425.00	90.800	323.640	8249.79	4707.58	4724.88	-1552.17	1766169.43	441318.20	39°42'33.925"N	80°13'09.117"W	4973.30	341.814	0.32	0.27	-0.17
13519.00	90.280	323.210	8248.91	4801.57	4800.37	-1608.18	1766113.42	441393.68	39°42'34.667"N	80°13'09.842"W	5062.58	341.479	0.72	-0.55	-0.46
13614.00	89.910	326.010	8248.75	4896.52	4877.81	-1663.19	1766058.41	441471.11	39°42'35.428"N	80°13'10.554"W	5153.56	341.172	2.97	-0.39	2.95
13708.00	89.250	325.190	8248.94	4990.42	4955.37	-1716.29	1766005.31	441548.67	39°42'36.190"N	80°13'11.241"W	5244.17	340.896	0.87	-0.06	-0.87
13803.00	89.780	322.740	8249.25	5085.40	5032.18	-1772.18	1765949.43	441625.48	39°42'36.944"N	80°13'11.964"W	5335.12	340.599	2.58	-0.07	-2.58
13897.00	89.940	321.150	8249.48	5179.38	5106.20	-1830.12	1765891.49	441699.49	39°42'37.671"N	80°13'12.713"W	5424.26	340.282	1.70	0.17	-1.69
13992.00	90.250	319.920	8249.32	5274.29	5179.54	-1890.50	1765831.12	441772.82	39°42'38.391"N	80°13'13.493"W	5513.76	339.948	1.34	0.33	-1.29
14086.00	90.000	320.350	8249.12	5368.17	5251.69	-1950.75	1765770.87	441844.97	39°42'39.100"N	80°13'14.271"W	5602.29	339.622	0.53	-0.27	0.46
14181.00	89.630	320.830	8249.43	5463.09	5325.09	-2011.06	1765710.56	441918.36	39°42'39.820"N	80°13'15.051"W	5692.18	339.311	0.64	-0.39	0.51
14276.00	89.570	318.100	8250.09	5557.90	5397.28	-2072.80	1765648.83	441990.55	39°42'40.529"N	80°13'15.848"W	5781.62	338.991	2.87	-0.06	-2.87

WELLPATH DATA (183 stations)





Actual Wellpath Report

Fisher 13H AWP Proj: 17252

Page 7 of 10

RECEIVED
Office of Oil and Gas
MAY 31 2018
WV Department of Environmental Protection



REFERENCE WELLPATH IDENTIFICATION

Operator	NORTHEAST NATURAL ENERGY, LLC	Slot	Slot #13
Area	Monongalia County, WV	Well	Fisher 13H
Field	Monongalia	Wellbore	Fisher 13H AWB
Facility	Fisher Pad		

WELLPATH DATA (183 stations)															
MD	Inclination	Azimuth	TVD	Vert Sect	North	East	Grid East	Grid North	Latitude	Longitude	Closure Dist	Closure Dir	DLS	Build Rate	Turn Rate
[ft]	[°]	[°]	[ft]	[ft]	[ft]	[ft]	[US ft]	[US ft]	[ft]	[ft]	[ft]	[ft]	[ft]	[ft/100ft]	[°/100ft]
14371.00	89.910	316.970	8250.52	5652.46	5467.36	-2136.93	1765584.70	442060.63	39°42'41.216"N	80°13'16.676"W	5870.13	338.652	1.24	0.36	-1.19
14465.00	89.820	322.690	8250.74	5746.28	5539.16	-2197.54	1765524.09	442132.42	39°42'41.921"N	80°13'17.459"W	5959.15	338.360	6.09	-0.10	6.09
14560.00	89.480	323.920	8251.32	5841.28	5615.33	-2254.31	1765467.33	442208.59	39°42'42.669"N	80°13'18.193"W	6050.93	338.127	1.34	-0.36	1.29
14655.00	89.420	325.720	8252.23	5936.22	5692.97	-2309.04	1765412.60	442286.22	39°42'43.432"N	80°13'18.901"W	6143.41	337.923	1.90	-0.06	1.89
14749.00	89.140	328.990	8253.42	6029.93	5772.10	-2359.73	1765361.91	442365.35	39°42'44.101"N	80°13'19.558"W	6225.82	337.764	3.49	-0.30	3.48
14842.00	89.260	328.380	8254.71	6122.46	5851.54	-2408.06	1765313.58	442444.79	39°42'44.991"N	80°13'20.185"W	6327.67	337.632	0.67	0.13	-0.66
14937.00	89.290	327.880	8255.92	6217.07	5932.22	-2458.22	1765263.43	442525.46	39°42'45.785"N	80°13'20.835"W	6421.37	337.492	0.53	0.03	-0.53
15032.00	89.290	325.380	8257.09	6311.87	6011.54	-2510.47	1765211.19	442604.78	39°42'46.564"N	80°13'21.511"W	6514.68	337.334	2.63	0.00	-2.63
15126.00	89.320	323.870	8258.23	6405.82	6088.18	-2564.88	1765156.78	442681.41	39°42'47.317"N	80°13'22.216"W	6606.40	337.165	1.61	0.03	-1.61
15221.00	89.510	322.320	8259.20	6500.81	6164.14	-2621.92	1765099.74	442757.37	39°42'48.064"N	80°13'22.953"W	6698.69	336.957	1.64	0.20	-1.63
15315.00	89.540	320.460	8259.98	6594.77	6237.59	-2680.57	1765041.09	442830.81	39°42'48.785"N	80°13'23.711"W	6789.18	336.745	1.98	0.03	-1.98
15410.00	88.860	321.250	8261.31	6689.69	6311.25	-2740.54	1764981.13	442904.47	39°42'49.508"N	80°13'24.466"W	6880.59	336.528	1.10	-0.72	0.83
15505.00	89.450	322.000	8262.71	6784.65	6385.72	-2799.51	1764922.16	442978.94	39°42'50.239"N	80°13'25.249"W	6972.42	336.327	1.00	0.62	0.79
15600.00	89.690	320.510	8263.42	6879.60	6459.81	-2858.96	1764862.71	443053.02	39°42'50.967"N	80°13'26.017"W	7064.19	336.127	1.59	0.25	-1.57
15694.00	89.880	319.950	8263.88	6973.49	6532.06	-2919.09	1764802.58	443125.27	39°42'51.676"N	80°13'26.794"W	7154.64	335.921	0.60	0.06	-0.60
15789.00	89.880	321.120	8264.19	7068.40	6605.40	-2979.47	1764742.21	443198.60	39°42'52.396"N	80°13'27.574"W	7246.28	335.721	1.24	0.14	1.23
15884.00	89.940	323.450	8264.34	7163.39	6680.55	-3037.59	1764684.10	443273.74	39°42'53.134"N	80°13'28.325"W	7338.71	335.549	2.46	0.06	2.45
15979.00	90.400	324.590	8264.06	7258.37	6757.42	-3093.40	1764628.29	443350.61	39°42'53.889"N	80°13'29.048"W	7431.81	335.403	1.29	0.48	1.20
16074.00	90.310	325.490	8263.47	7353.31	6835.28	-3147.83	1764573.86	443428.46	39°42'54.654"N	80°13'29.752"W	7525.28	335.273	0.96	-0.09	0.95
16168.00	90.550	323.330	8262.76	7447.27	6911.71	-3202.53	1764519.16	443504.89	39°42'55.405"N	80°13'30.460"W	7617.61	335.139	2.31	0.26	-2.30
16262.00	90.000	322.750	8262.31	7541.27	6986.82	-3259.05	1764462.65	443580.00	39°42'56.143"N	80°13'31.191"W	7709.54	334.993	0.85	-0.59	-0.62
16357.00	88.460	321.820	8263.59	7636.25	7061.96	-3317.16	1764404.54	443655.13	39°42'56.881"N	80°13'31.942"W	7802.23	334.840	1.89	-1.62	-0.98
16452.00	89.510	318.700	8265.27	7731.11	7134.99	-3377.87	1764343.83	443728.16	39°42'57.598"N	80°13'32.722"W	7894.18	334.666	3.46	1.11	-3.28
16546.00	89.600	317.950	8266.00	7824.79	7205.20	-3440.37	1764281.34	443798.36	39°42'58.287"N	80°13'33.534"W	7984.42	334.476	0.80	0.10	-0.80
16641.00	89.820	320.240	8266.48	7919.67	7276.99	-3502.57	1764219.14	443870.15	39°42'58.991"N	80°13'34.337"W	8076.05	334.297	2.42	0.23	2.41
16735.00	89.720	324.620	8266.86	8013.54	7351.48	-3559.87	1764161.84	443944.64	39°42'59.723"N	80°13'35.078"W	8168.04	334.162	4.66	-0.11	4.66
16830.00	90.030	325.950	8267.07	8108.46	7429.57	-3613.97	1764107.75	444022.72	39°43'00.490"N	80°13'35.778"W	8261.92	334.060	1.44	0.33	1.40
16925.00	89.970	325.640	8267.07	8203.35	7508.14	-3667.38	1764054.34	444101.28	39°43'01.262"N	80°13'36.470"W	8355.94	333.967	0.33	-0.06	-0.33
17020.00	89.880	327.750	8267.19	8298.14	7587.53	-3719.54	1764002.19	444180.67	39°43'02.043"N	80°13'37.146"W	8450.18	333.885	2.22	-0.09	2.22
17114.00	89.880	326.300	8267.39	8391.91	7666.38	-3770.70	1763951.03	444259.52	39°43'02.818"N	80°13'37.809"W	8543.51	333.810	1.54	0.00	-1.54



Actual Wellpath Report

Fisher 13H AWP Proj: 17252'
Page 8 of 10

RECEIVED
Office of Oil and Gas
MAY 31 2018
WV Department of
Environmental Protection



REFERENCE WELLPATH IDENTIFICATION

Operator	NORTHEAST NATURAL ENERGY, LLC	Slot	Slot #13
Area	Monongalia County, WV	Well	Fisher 13H
Field	Monongalia	Wellbore	Fisher 13H AWB
Facility	Fisher Pad		

WELLPATH DATA (183 stations)

MD [ft]	Inclination [°]	Azimuth [°]	TVD [ft]	Vert Sect [ft]	North [ft]	East [ft]	Grid East [US ft]	Grid North [US ft]	Latitude	Longitude	Closure Dist [ft]	Closure Dir [°]	DLS [°/100ft]	Build Rate [°/100ft]	Turn Rate [°/100ft]
17209.00	90.220	324.370	8267.31	8486.83	7744.52	-3824.73	1763897.00	444337.65	39°43'03.586"N	80°13'38.508"W	8637.48	333.717	2.06	0.36	-2.03
17227.00	90.280	324.150	8267.23	8504.82	7759.13	-3835.24	1763886.49	444352.26	39°43'03.729"N	80°13'38.644"W	8655.24	333.697	1.27	0.33	-1.22
17252.00	90.280	324.150	8267.11	8529.82	7779.39	-3849.89	1763871.85	444372.52	39°43'03.928"N	80°13'38.834"W	8679.89	333.670	0.00	0.00	0.00

HOLE & CASING SECTIONS - Ref Wellbore: Fisher 13H AWB Ref Wellpath: Fisher 13H AWP Proj: 17252'

String/Diameter	Start MD [ft]	End MD [ft]	Interval [ft]	Start TVD [ft]	End TVD [ft]	Start N/S [ft]	Start E/W [ft]	End N/S [ft]	End E/W [ft]
24in Conductor	32.00	72.00	40.00	32.00	72.00	0.00	0.00	0.00	0.02
17.5in Open Hole	72.00	1490.00	1418.00	72.00	1489.98	0.00	0.02	0.42	-4.75
13.375in Casing Surface	32.00	1460.00	1428.00	32.00	1459.98	0.00	0.00	0.17	-4.58
12.25in Open Hole	1490.00	2712.00	1222.00	1489.98	2711.80	0.42	-4.75	15.45	-18.39
9.625in Casing Intermediate	32.00	2682.00	2650.00	32.00	2681.80	0.00	0.00	15.10	-18.20
8.75in Open Hole	2712.00	6312.00	3600.00	2711.80	6310.85	15.45	-18.39	53.08	-78.89
8.5in Open Hole	6312.00	17252.00	10940.00	6310.85	8267.11	53.08	-78.89	7779.39	-3849.89
5.5in Casing Production	32.00	17252.00	17220.00	32.00	8267.11	0.00	0.00	7779.39	-3849.89

TARGETS

Name	TVD [ft]	North [ft]	East [ft]	Grid East [US ft]	Grid North [US ft]	Latitude	Longitude	Shape
Fisher 13H BHL Rev-2	8250.00	7772.60	-3859.85	1763861.88	444365.73	39°43'03.860"N	80°13'38.960"W	point
Fisher 13H LP Rev-2	8250.00	1359.02	972.93	1768694.37	437952.54	39°42'00.860"N	80°12'36.468"W	point



Actual Wellpath Report

Fisher 13H AWP Proj: 17252'
Page 9 of 10

RECEIVED
Oil Gas
1 2018
Department of
Mental Protection



REFERENCE WELLPATH IDENTIFICATION

Operator	NORTHEAST NATURAL ENERGY, LLC	Slot	Slot #13
Area	Monongalia County, WV	Well	Fisher 13H
Field	Monongalia	Wellbore	Fisher 13H AWB
Facility	Fisher Pad		

WELLPATH COMPOSITION - Ref Wellbore: Fisher 13H AWB Ref Wellpath: Fisher 13H AWP Proj: 17252'

Start MD [ft]	End MD [ft]	Positional Uncertainty Model	Log Name/Comment	Wellbore
32.00	6276.00	VESI GyroFlex v4	01_VES Gyro <8-3/4"> (100'-6260')	Fisher 13H AWB
6276.00	17227.00	BHI AutoTrak Curve (Short)	02_BHI AT Curve <8-1/2"> (6276')(6335'-17227')	Fisher 13H AWB
17227.00	17252.00	Blind Drilling (std)	Projection to bit	Fisher 13H AWB



Actual Wellpath Report

Fisher 13H AWP Proj: 17252'
Page 10 of 10

RECEIVED
Office of Oil and Gas
MAY 31 2018
WV Department of
Environmental Protection



REFERENCE WELLPATH IDENTIFICATION

Operator	NORTHEAST NATURAL ENERGY, LLC	Slot	Slot #13
Area	Monongalia County, WV	Well	Fisher 13H
Field	Monongalia	Wellbore	Fisher 13H AWB
Facility	Fisher Pad		

COMMENTS

Wellpath general comments
API: 47-061-01739-0000
BHI Job #: 8423649
Rig: Nabors X08
Duration: 2/28/2017-3/5/2017
VES Gyro <8-3/4"> (100'-6260')
BHI AT Curve <8-1/2"> (6276')(6335'-17227')
Projected MD at TD: 17252'