

State of West Virginia
Department of Environmental Protection - Office of Oil and Gas
Well Operator's Report of Well Work

API 47-061-01817 County Monongalia District Battelle
Quad Mannington Pad Name McClellan Field/Pool Name _____
Farm name McClellan Well Number 14H

Operator (as registered with the OOG) Northeast Natural Energy LLC
Address 707 Virginia St. E, Suite 1200 City Charleston State WV Zip 25301
RECEIVED
Office of Oil and Gas
JUL 21 2021

As Drilled location NAD 83/UTM Attach an as-drilled plat, profile view, and deviation survey
Top hole Northing 4386010.4 Easting 561917.2
Landing Point of Curve Northing 4386356.3 Easting 562678.5
Bottom Hole Northing 4383809.3 Easting 564441.2

Elevation (ft) 1,412' GL Type of Well New Existing Type of Report Interim Final
Permit Type Deviated Horizontal Horizontal 6A Vertical Depth Type Deep Shallow
Type of Operation Convert Deepen Drill Plug Back Redrilling Rework Stimulate
Well Type Brine Disposal CBM Gas Oil Secondary Recovery Solution Mining Storage Other _____
Type of Completion Single Multiple Fluids Produced Brine Gas NGL Oil Other _____
Drilled with Cable Rotary

Drilling Media Surface hole Air Mud Fresh Water Intermediate hole Air Mud Fresh Water Brine
Production hole Air Mud Fresh Water Brine

Mud Type(s) and Additive(s)
SYNTHETIC BASED MUD FOR HORIZONTAL SECTION; BIO-BASE 365, CALCIUM CHLORIDE POWDER, G-Seal Plus, HRP, Lime, M-I WATE (BARITE), M-I-X II MEDIUM,
MEGADRIL P SYSTEM, MEGADRIL P SYSTEM RENTAL, MEGAMUL, SAFE-CARB 250, VERSATHIN HF, VERSAWET, VG-PLUS, VINSEAL MEDIUM, WALNUT NUT PLUG MEDIUM

Date permit issued 1/16/2019 Date drilling commenced 7/15/2019 Date drilling ceased 12/11/2020
Date completion activities began 2/9/2021 Date completion activities ceased 3/2/2021
Verbal plugging (Y/N) NA Date permission granted NA Granted by NA

Please note: Operator is required to submit a plugging application within 5 days of verbal permission to plug

Freshwater depth(s) ft 726', 1105', 1135' Open mine(s) (Y/N) depths N
Salt water depth(s) ft 2150', 2470' Void(s) encountered (Y/N) depths N
Coal depth(s) ft 1095' Cavern(s) encountered (Y/N) depths N
Is coal being mined in area (Y/N) N

Reviewed by:
Bryan Harris

API 47-061 - 01817 Farm name McClellan Well number 14H

CASING STRINGS	Hole Size	Casing Size	Depth	New or Used	Grade wt/ft	Basket Depth(s)	Did cement circulate (Y/N) * Provide details below*
Conductor	30"	24"	58'	N		NA	Y
Surface	17-1/2"	13-3/8"	1,257'	N	54.5	NA	Y, 30 bbl
Coal							
Intermediate 1	12-1/4"	9-5/8"	2,683'	N	40	NA	Y, 25 bbl
Intermediate 2							
Intermediate 3							
Production	8-3/4"	5-1/2"	19,602'	N30	20		Y
Tubing							
Packer type and depth set							

RECEIVED
Office of Oil and Gas
JUL 21 2021

Comment Details _____ WV Department of Environmental Protection

CEMENT DATA	Class/Type of Cement	Number of Sacks	Slurry wt (ppg)	Yield (ft ³ /sks)	Volume (ft ³)	Cement Top (MD)	WOC (hrs)
Conductor	4500 psi ready mis					CTS	48
Surface	Class A	1,004	15.6	1.179	1,184	CTS	8
Coal							
Intermediate 1	Class A	894	15.6	1.18	1,055	CTS	8
Intermediate 2							
Intermediate 3							
Production	50:50 Poz	3,505	14.5	1.16	4,053	1,491'	48
Tubing							

Drillers TD (ft) 19,602' Loggers TD (ft) 19,587'
 Deepest formation penetrated Marcellus Plug back to (ft) NA
 Plug back procedure NA

Kick off depth (ft) 4,517'

Check all wireline logs run
 caliper density deviated/directional induction
 neutron resistivity gamma ray temperature sonic

Well cored Yes No Conventional Sidewall Were cuttings collected Yes No

DESCRIBE THE CENTRALIZER PLACEMENT USED FOR EACH CASING STRING _____
 Surface: Bow spring centralizers every 3rd joint or approximately 120'
 Intermediate: Bow spring centralizers every 3rd joint or approximately 120'
 Production: Rigid body centralizers placed at a minimum of every other joint (~80') from TD to surface

WAS WELL COMPLETED AS SHOT HOLE Yes No DETAILS _____

WAS WELL COMPLETED OPEN HOLE? Yes No DETAILS _____

WERE TRACERS USED Yes No TYPE OF TRACER(S) USED _____

McClellan 14H Perforation Summary

Stage Number	Report Date	Cluster 5 Bottom TD	Cluster 1 Top TD	Total Shots
1	02/09/21	19,494	-	-
2	02/09/21	19,289	19,449	40
3	02/10/21	19,088	19,247	40
4	02/11/21	18,884	19,044	40
5	02/12/21	18,681	18,838	40
6	02/12/21	18,478	18,638	40
7	02/13/21	18,275	18,435	40
8	02/13/21	18,072	18,233	40
9	02/14/21	17,869	18,030	40
10	02/15/21	17,667	17,827	40
11	02/16/21	17,464	17,624	40
12	02/16/21	17,261	17,421	40
13	02/16/21	17,058	17,218	40
14	02/18/21	16,855	17,016	40
15	02/18/21	16,653	16,813	40
16	02/19/21	16,450	16,610	40
17	02/20/21	16,247	16,407	40
18	02/21/21	16,044	16,204	40
19	02/21/21	15,841	16,001	40
20	02/22/21	15,638	15,799	40
21	02/22/21	15,436	15,596	40
22	02/23/21	15,233	15,393	40
23	02/23/21	15,030	15,190	40
24	02/24/21	14,827	14,987	40
25	02/24/21	14,624	14,785	40
26	02/25/21	14,422	14,582	40
27	02/26/21	14,219	14,379	40
28	02/26/21	14,016	14,176	40
29	02/26/21	13,813	13,973	40
30	02/27/21	13,610	13,770	40
31	02/27/21	13,407	13,568	40
32	02/28/21	13,205	13,365	40
33	02/28/21	13,002	13,162	40
34	03/01/21	12,799	12,959	40
35	03/02/21	12,596	12,756	40
36	03/02/21	12,393	12,554	40
37	03/03/21	12,190	12,351	40
38	03/03/21	11,988	12,148	40
39	03/04/21	11,785	11,945	40
40	03/04/21	11,582	11,742	40
41	03/05/21	11,379	11,539	40
42	03/05/21	11,176	11,337	40
43	03/05/21	10,974	11,134	40
44	03/06/21	10,771	10,931	40
45	03/06/21	10,568	10,728	40
46	03/07/21	10,365	10,525	40
47	03/08/21	10,162	10,323	40

RECEIVED
Office of Oil and Gas

JUL 21 2021

WV Department of
Environmental Protection

48	03/08/21	9,959	10,120	40
49	03/08/21	9,757	9,917	40
50	03/09/21	9,554	9,714	40
51	03/09/21	9,351	9,511	40
52	03/10/21	9,148	9,308	40

RECEIVED
Office of Oil and Gas
JUL 21 2021
WV Department of
Environmental Protection

McClellan 14H Stimulation Report

Stage Number	Report Date	ISIP (psi)	Breakdown Pressure (psi)	Avg Treating Pressure	Avg Treating Rate (BPM)	Pad Volume (bbls)	Total Clean Fluid	Total Proppant Amount	Flush Volume (bbls)
1	02/09/21	5642	0	8535	89	1000	7474	300500	436
2	02/09/21	5148	6111	8614	88	30	9019	459280	428
3	02/10/21	5880	5835	8608	83	20	9758	455400	430
4	02/11/21	5306	5767	9150	90	13	9089	453360	418
5	02/12/21	5180	7150	8983	82	30	9651	454420	420
6	02/12/21	5924	6334	9568	90	10	9045	435620	413
7	02/13/21	5911	7298	9587	85	17	9445	457260	408
8	02/13/21	5640	6765	9343	89	6	8707	458780	404
9	02/14/21	5372	7471	9461	89	24	8816	449860	401
10	02/15/21	5931	7340	9609	89	22	8850	452440	395
11	02/16/21	6840	6661	9601	90	7	8615	458820	395
12	02/16/21	5909	6808	9506	89	32	9135	462320	386
13	02/16/21	6840	7051	9648	90	8	8608	456600	390
14	02/18/21	5558	7425	9007	90	16	8273	455960	377
15	02/18/21	5945	5427	9365	89	12	8378	454880	372
16	02/19/21	6480	5903	9307	89	6	8431	456600	370
17	02/20/21	5777	7023	9570	89	20	8399	455480	363
18	02/21/21	6169	6865	9587	88	6	8680	454520	361
19	02/21/21	5641	7722	9587	84	20	8101	449800	354
20	02/22/21	4993	7250	9811	85	11	8331	453860	350
21	02/22/21	6343	6661	9409	92	3	8778	456540	345
22	02/23/21	5388	6967	9538	90	15	8466	465620	341
23	02/23/21	6012	6022	9288	89	3	8519	454200	336
24	02/24/21	5127	5675	9620	88	20	8426	457880	332
25	02/24/21	6004	5753	9059	88	3	8371	455380	324
26	02/25/21	5026	7357	9727	89	24	8712	459060	323
27	02/26/21	5443	6584	9534	87	3	8586	458380	318
28	02/26/21	5406	7600	9215	89	23	8470	456100	315
29	02/26/21	5902	7210	9066	86	23	8455	463440	309
30	02/27/21	5091	6337	9285	87	26	8768	456520	314
31	02/27/21	5445	6979	9220	86	3	8590	453140	300
32	02/28/21	4960	5824	9604	89	17	8579	444700	296
33	02/28/21	5269	6887	9121	84	24	7904	459760	0
34	03/01/21	5035	6719	9358	86	15	8141	449300	287
35	03/02/21	5763	6974	9133	87	8	8877	454920	282
36	03/02/21	5252	6570	8937	85	25	8252	455560	278
37	03/03/21	5386	7045	8952	88	16	8681	452320	275
38	03/03/21	5598	6630	89	86	15	8356	456380	269
39	03/04/21	5436	7483	8919	88	20	8372	450640	266
40	03/04/21	5330	7015	8772	89	22	8349	450280	264
41	03/05/21	6005	6498	8512	88	25	8180	456040	257
42	03/05/21	5469	7434	9047	85	12	8308	459020	251
43	03/05/21	5033	6782	8706	90	25	7276	455240	250
44	03/06/21	5512	6878	8842	89	26	8360	461500	245

45	03/06/21	5341	6858	8611	92	15	8096	454340	238
46	03/07/21	6127	7521	8739	88	17	8487	454460	232
47	03/08/21	5402	7669	8731	89	15	8049	456240	228
48	03/08/21	5637	6840	8134	90	19	8290	456420	227
49	03/08/21	5796	6681	8369	90	15	7783	460580	221
50	03/09/21	5297	7011	8543	89	18	8755	460180	215
51	03/09/21	6239	6831	8216	90	12	7731	455240	211
52	03/10/21	6133	6757	8342	90	15	8217	453900	207

RECEIVED
Office of Oil and Gas

JUL 21 2021

WV Department of
Environmental Protection

McClellan Completion lithology

Lithology/Formation	Top Depth in FT TVD	Bottom Depth in FT TVD	Describe rock type and record quantity and type of fluid (freshwater, brine, oil, gas, H2S, etc)
Sand/silt	0	160	Sand/silt
silt/red shale	160	490	silt/red shale
siltstone/sandstone/limestone	490	520	siltstone/sandstone/limestone
limestone/siltstone/sandstone	520	576	siltstone
coal	576	580	coal
siltstone/limestone/shale	580	760	siltstone/shale
coal	760	992	siltstone/shale/limestone
siltstone/sandstone	992	998	coal
coal	998	1084	siltstone/shale/limestone
sandstone/siltstone/limestone	1084	1092	coal - Pittsburgh
coal-Pittsburgh	1092	1120	siltstone/shale/limestone
sandstone/limestone	1120	1150	sandstone
red shale/siltstone	1150	1480	siltstone/limestone/sand/red shale
Limestone/siltstone	1480	2050	siltstone/sandstone
sandstone	2050	2110	sandstone
sandstone/siltstone/red shale	2110	2260	siltstone/sandstone
siltstone/sandstone	2260	2470	siltstone/limestone
sandstone	2470	2500	Big Injun Sandstone
Upper Devonian Sands/silts	2500	3010	sandstone/siltstone
shale/siltstone	3010	3020	Gantz sandstone
Upper Devonian Sands/silts	3020	3560	Upper Devonian sandstones/siltstones
Devonian siltstones/shales	3560	7620	Devonian siltstones/shales
Middlesex shale/silt	7620	7790	Middlesex shale/silt
Burkett shale	7790	7816	Burkett Shale
Geneseo shale	7816	7845	Geneseo shale
Tully Limestone	7845	7898	Tully Limestone
Hamilton shale	7898	7996	Hamilton shale
Marcellus shale	7996	TD	Marcellus shale

Department of
 Environmental Protection

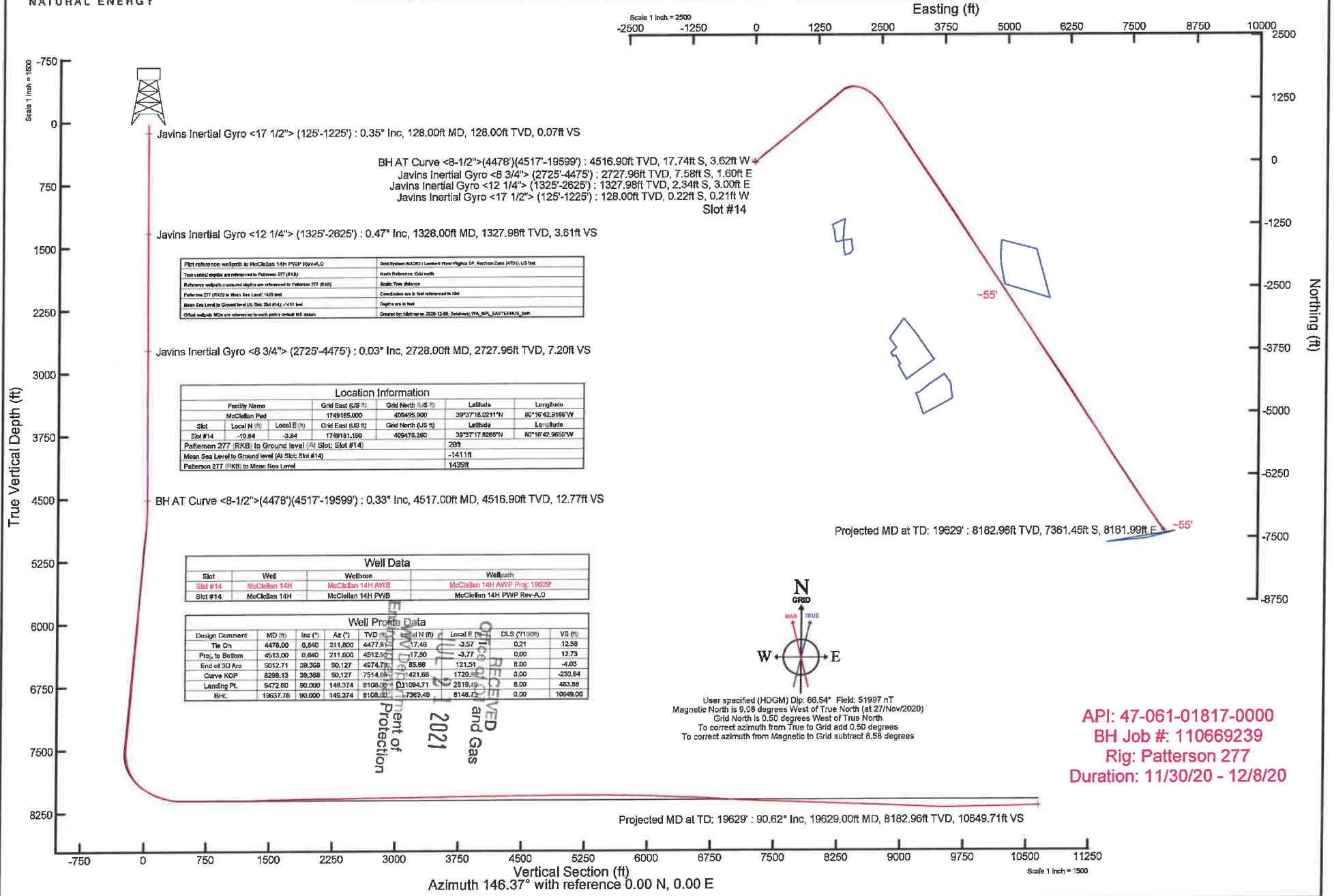
APR 21 2021

cas

NORTHEAST NATURAL ENERGY, LLC

Location: Monongalia County, WV
 Field: Monongalia
 Facility: McClellan Pad

Slot: Slot #14
 Well: McClellan 14H
 Wellbore: McClellan 14H PWB



Javins Inertial Gyro <17 1/2"> (125'-1225') : 0.35° Inc, 128.00ft MD, 128.00ft TVD, 0.07ft VS

BH AT Curve <8-1/2">(4478')(4517'-19599') : 4516.90ft TVD, 17.74ft S, 3.62ft W
 Javins Inertial Gyro <8 3/4"> (2725'-4475') : 2727.96ft TVD, 7.58ft S, 1.60ft E
 Javins Inertial Gyro <12 1/4"> (1325'-2625') : 1327.98ft TVD, 2.34ft S, 3.00ft E
 Javins Inertial Gyro <17 1/2"> (125'-1225') : 128.00ft TVD, 0.22ft S, 0.21ft W
 Slot #14

Javins Inertial Gyro <12 1/4"> (1325'-2625') : 0.47° Inc, 1328.00ft MD, 1327.98ft TVD, 3.61ft VS

Plot reference wellpath is McClellan 14H PWB Rev-A.0	Grid System: NAD83 (Lambert Equal-Area Conic, NAD83 Zone 18N) US Feet
True vertical depths are referenced to Patterson 277 (RA3)	North Reference: Grid north
Reference wellpath measured depths are referenced to Patterson 277 (RA3)	Scale: True distance
Patterson 277 (RA3) to Mean Sea Level: 143.9ft	Coordinates are in feet referenced to Slot
Mean Sea Level to Ground level (M Slot #14): -141.1ft	Depths are in feet
Offset wellbore MDs are referenced to each path's overall MD minus	Created by: Idrisup on 2020-12-08, Database: WFA_RPS_EASTERNUS_Dwh

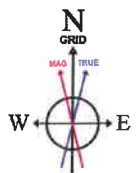
Javins Inertial Gyro <8 3/4"> (2725'-4475') : 0.03° Inc, 2728.00ft MD, 2727.96ft TVD, 7.20ft VS

Location Information							
Facility Name	Grid East (US ft)	Grid North (US ft)	Latitude	Longitude	Slot	Local N (ft)	Local E (ft)
McClellan Pad	1749185.000	408495.900	39°37'18.0211"N	80°16'42.9165"W			
Slot #14	-19.64	-3.64	1749181.190	409478.260	39°37'17.8268"N	80°16'42.9655"W	
Patterson 277 (RKB) to Ground level (M Slot #14)					28ft		
Mean Sea Level to Ground level (M Slot #14)					-141.1ft		
Patterson 277 (RKB) to Mean Sea Level					1439ft		

BH AT Curve <8-1/2">(4478')(4517'-19599') : 0.33° Inc, 4517.00ft MD, 4516.90ft TVD, 12.77ft VS

Well Data			
Slot	Well	Wellbore	Wellpath
Slot #14	McClellan 14H	McClellan 14H AWB	McClellan 14H AWP Proj: 19629'
Slot #14	McClellan 14H	McClellan 14H PWB	McClellan 14H PWB Rev-A.0

Well Profile Data									
Design Comment	MD (ft)	Inc (°)	Az (°)	TVD (ft)	Grid N (ft)	Local N (ft)	Local E (ft)	DLS (7100m)	VS (ft)
Top On	4476.00	0.840	211.800	4477.81	17.48	-3.57	0.21		12.58
Pro. to Bottom	4515.00	0.840	211.800	4512.92	17.80	-3.77	8.00		12.73
End of 3D Arc	5012.71	39.368	50.127	4574.77	85.88	121.51	8.00		-4.03
Curve KOP	8286.13	39.368	50.127	7514.08	421.69	1720.35	0.00		-230.54
Landing Pt.	9472.60	90.000	148.374	8108.00	1094.71	2519.49	8.00		483.88
BHL	19637.76	90.000	146.374	8108.00	7389.49	8148.73	0.00		10649.06



User specified (HDGM) Dip: 68.54° Field: S1997 nT
 Magnetic North is 9.08 degrees West of True North (at 27/Nov/2020)
 Grid North is 0.50 degrees West of True North
 To correct azimuth from True to Grid add 0.50 degrees
 To correct azimuth from Magnetic to Grid subtract 8.58 degrees

API: 47-061-01817-0000
 BH Job #: 110669239
 Rig: Patterson 277
 Duration: 11/30/20 - 12/8/20

Vertical Section (ft)
 Azimuth 146.37° with reference 0.00 N, 0.00 E

RECEIVED
 U.S. DEPARTMENT OF
 ENERGY
 NOV 20 2021
 FEDERAL ENERGY
 REGULATION
 AND
 ENVIRONMENTAL
 PROTECTION



Ticket #: 0

Remit to:
 Lightning Energy Services
 104 Heliport Loop Road
 Bridgeport, WV 26330

Job Times				
Date:	On Loc: 07/16/19	Job Start:	Job End:	Off Loc: 07/16/19
Time:	7:30pm	10:20pm	12:11am	2:00am

Customer and Well Information					
Customer: NORTHEAST		Well Name: Mcclellan		Well #: 14 H	Well Type: GAS
County:	State: WV	AFE #/API #:	PO #/Permit #:	Well Class:	
Field:		Lease: Mcclellan	Rig Name/# : northeast rig 8		
Wellbore Information					
Bit Size (Inches): 17.5	Well MD (ft):	Well TVD (ft): 1300	BHST (F°):	BHCT (F°):	Deviation (°):
Drilling Fluid Type:	Drilling Fluid Density (ppg):	Packer Depth (ft):	Treating Down:		
Previous Casing/Liner					
Size (Inches): 24	Weight (lb/ft):	Thread:	Grade:	Total Footage (ft): 58	
Casing/Liner/Tubing					
Size (Inches): 13.375	Weight (lb/ft): 54.5	Thread:	Grade:	Total Footage (ft): 1257	
Job					
Job Type:		Connection to Well: YES		Top Plug: YES	
Lift Pressure (PSI): 476	Max Annulus Pressure (PSI):	Mix Water Temp (F°):		Bottom Plug: No	
Casing/Tubing Secured : YES	Pipe Rotated: No	Cement Return to Surface (bbl):	Top Job (bbl): no		
Pipe Reciprocated : No	Circulation Lost: No	Job Completed: YES			

RECEIVED
 Office of Oil and Gas
 JUL 21 2021
 WV Department of
 Environmental Protection



Ticket #:
0

Remit to:
Lightning Energy Services
104 Heliport Loop Road
Bridgeport, WV 26330

Job Times				
On Loc:	Job Start:	Job End:	Off Loc:	
Date: 07/18/19	07/19/19		07/19/19	
Time: 11:00pm	6:34am	9:10am	11:00am	

Customer and Well Information					
Customer: NORTHEAST		Well Name: Mcclellan		Well #: 14 H	Well Type: GAS
County:	State: WV	AFE #/API #: 100385-602	PO #/Permit #:	Well Class:	
Field:		Lease: Mcclellan	Rig Name/# : northeast rig 8		
Wellbore Information					
Bit Size (Inches): 12.25	Well MD (ft):	Well TVD (ft): 2735	BHST (F°):	BHCT (F°):	Deviation (°):
Drilling Fluid Type:	Drilling Fluid Density (ppg):	Packer Depth (ft):	Treating Down:		
Previous Casing/Liner					
Size (Inches): 13.375	Weight (lb/ft): 54.5	Thread:	Grade:	Total Footage (ft): 1257	
Casing/Liner/Tubing					
Size (Inches): 9.625	Weight (lb/ft): 40	Thread:	Grade:	Total Footage (ft): 2683	
Job					
Job Type:		Connection to Well: YES		Top Plug: YES	
Lift Pressure (PSI): 1535	Max Annulus Pressure (PSI):	Mix Water Temp (F°):	Bottom Plug: No		
Casing/Tubing Secured : YES	Pipe Rotated: No	Cement Return to Surface (bbl): 25	Top Job (bbl): no		
Pipe Reciprocated : No	Circulation Lost: No	Job Completed: YES			

RECEIVED
Office of Oil and Gas
JUL 21 2021
WV Department of
Environmental Protection

Hydraulic Fracturing Fluid Product Component Information Disclosure

Job Start Date:	2/9/2021
Job End Date:	3/10/2021
State:	West Virginia
County:	Monongalia
API Number:	47-061-01817-00-00
Operator Name:	Northeast Natural Energy LLC
Well Name and Number:	McClellan 14H
Latitude:	39.62161900
Longitude:	-80.27860200
Datum:	NAD83
Federal Well:	NO
Indian Well:	NO
True Vertical Depth:	8,205
Total Base Water Volume (gal):	18,557,574
Total Base Non Water Volume:	0



Hydraulic Fracturing Fluid Composition:

Trade Name	Supplier	Purpose	Ingredients	Chemical Abstract Service Number (CAS #)	Maximum Ingredient Concentration in Additive (% by mass)**	Maximum Ingredient Concentration in HF Fluid (% by mass)**	Comments
Water	Company 1	Carrier/Base Fluid	Water	7732-18-5	100.00000	86.59029	None
Sand (Proppant)	Producers Service Corp	Proppant	Silica Substrate	14808-60-7	100.00000	13.15759	None
StimSTREAM FR 9800	Producers Service Corp	Friction Reducer	copolymer of 2-propenamide	Proprietary	30.00000	0.01600	None
			Petroleum Distillate	64742-47-8	20.00000	0.01067	None
			Oleic Acid Diethanolamide	93-83-4	2.00000	0.00107	None
			Alcohols, C12-16, ethoxylated	68551-12-2	2.00000	0.00107	None
			Ammonium chloride ((NH4)Cl)	12125-02-9	1.00000	0.00053	None
Clearal 268	Producers Service Corp	Biocide	Non-hazardous substances	Proprietary	80.00000	0.01588	None
			Glutaraldehyde	111-30-8	20.00000	0.00397	None
			Quaternary Ammonium Compounds	68424-85-1	3.00000	0.00060	None
			Didecyl dimethyl ammonium chloride	7173-51-5	3.00000	0.00060	None

RECEIVED
 Office of Oil and Gas
 JUL 21 2021
 WV Department of
 Environmental Protection

			Ethanol	64-17-5	1.50000	0.00030	None
StimSTREAM SC 405	Producers Service Corp	Scale Inhibitor					
			Non-hazardous substances	Proprietary	70.00000	0.01294	None
			Diethylenetriamine penta (methylene phosphonic acid) (DTPMP)	15827-60-8	10.00000	0.00185	None
			2-Phosphono-1,2,4-butanetricarboxylic acid (PBTC)	37971-36-1	10.00000	0.00185	None
			Citric Acid	77-92-9	10.00000	0.00185	None
7.5% HCL	Producers Service Corp	Acidizing					
			Hydrochloric Acid	7647-01-0	7.50000	0.01201	None
4-N-1	Producers Service Corp	Inhibitor					
			Acetic acid	64-19-7	90.00000	0.00028	None
			Methanol	67-56-1	10.00000	0.00003	None
			2-Ethylhexanol	104-76-7	10.00000	0.00003	None
			Cocamide Diethanolamine	68603-42-9	5.00000	0.00002	None
			Diethanolamine	111-42-2	1.00000	0.00000	None
Ingredients shown above are subject to 29 CFR 1910.1200(i) and appear on Material Safety Data Sheets (MSDS). Ingredients shown below are Non-MSDS.							
Other Chemical(s)	Listed Above	See Trade Name(s) List					
			Non-hazardous substances	Proprietary	80.00000	0.01588	
			Petroleum Distillate	64742-47-8	20.00000	0.01067	
			Diethylenetriamine penta (methylene phosphonic acid) (DTPMP)	15827-60-8	10.00000	0.00185	
			2-Phosphono-1,2,4-butanetricarboxylic acid (PBTC)	37971-36-1	10.00000	0.00185	
			Citric Acid	77-92-9	10.00000	0.00185	
			Alcohols, C12-16, ethoxylated	68551-12-2	2.00000	0.00107	
			Oleic Acid Diethanolamide	93-83-4	2.00000	0.00107	
			Quaternary Ammonium Compounds	68424-85-1	3.00000	0.00060	
			Didecyl dimethyl ammonium chloride	7173-51-5	3.00000	0.00060	
			Ammonium chloride ((NH4)Cl)	12125-02-9	1.00000	0.00053	
			Ethanol	64-17-5	1.50000	0.00030	
			2-Ethylhexanol	104-76-7	10.00000	0.00003	
			Methanol	67-56-1	10.00000	0.00003	
			Cocamide Diethanolamine	68603-42-9	5.00000	0.00002	
			Diethanolamine	111-42-2	1.00000	0.00000	

* Total Water Volume sources may include fresh water, produced water, and/or recycled water

** Information is based on the maximum potential for concentration and thus the total may be over 100%

Note: For Field Development Products (products that begin with FDP), MSDS level only information has been provided. Ingredient information for chemicals subject to 29 CFR 1910.1200(i) and Appendix D are obtained from suppliers Material Safety Data Sheets (MSDS)

RECEIVED
 Office of Chemicals and Hazardous Waste
 JUL 2 2009
 WV Department of Environmental Protection