



West Virginia Department of Environmental Protection
Office of Oil and Gas

WELL LOCATION FORM: GPS

API: 47-061-70990 WELL NO.: 4392

FARM NAME: LOUIE M. HAUGHT

RESPONSIBLE PARTY NAME: CONSOLIDATION COAL COMPANY

COUNTY: Monongalia DISTRICT: Battelle

QUADRANGLE: WADESTOWN WV, PA 7.5'

SURFACE OWNER: CONSOL MINING COMPANY LLC.

ROYALTY OWNER: _____

UTM GPS NORTHING: 4,388,516 m (1259.5')

UTM GPS EASTING: 553,777 m GPS ELEVATION: 384 m

The Responsible Party named above has chosen to submit GPS coordinates in lieu of preparing a new well location plat for a plugging permit or assigned API number on the above well. The Office of Oil and Gas will not accept GPS coordinates that do not meet the following requirements:

1. Datum: NAD 1983, Zone: 17 North, Coordinate Units: meters, Altitude: height above mean sea level (MSL) – meters.
2. Accuracy to Datum – 3.05 meters
3. Data Collection Method:

Survey grade GPS : Post Processed Differential _____
Real-Time Differential

Mapping Grade GPS _____ : Post Processed Differential _____
Real-Time Differential _____

4. **Letter size copy of the topography map showing the well location.**

I the undersigned, hereby certify this data is correct to the best of my knowledge and belief and shows all the information required by law and the regulations issued and prescribed by the Office of Oil and Gas.

Signature

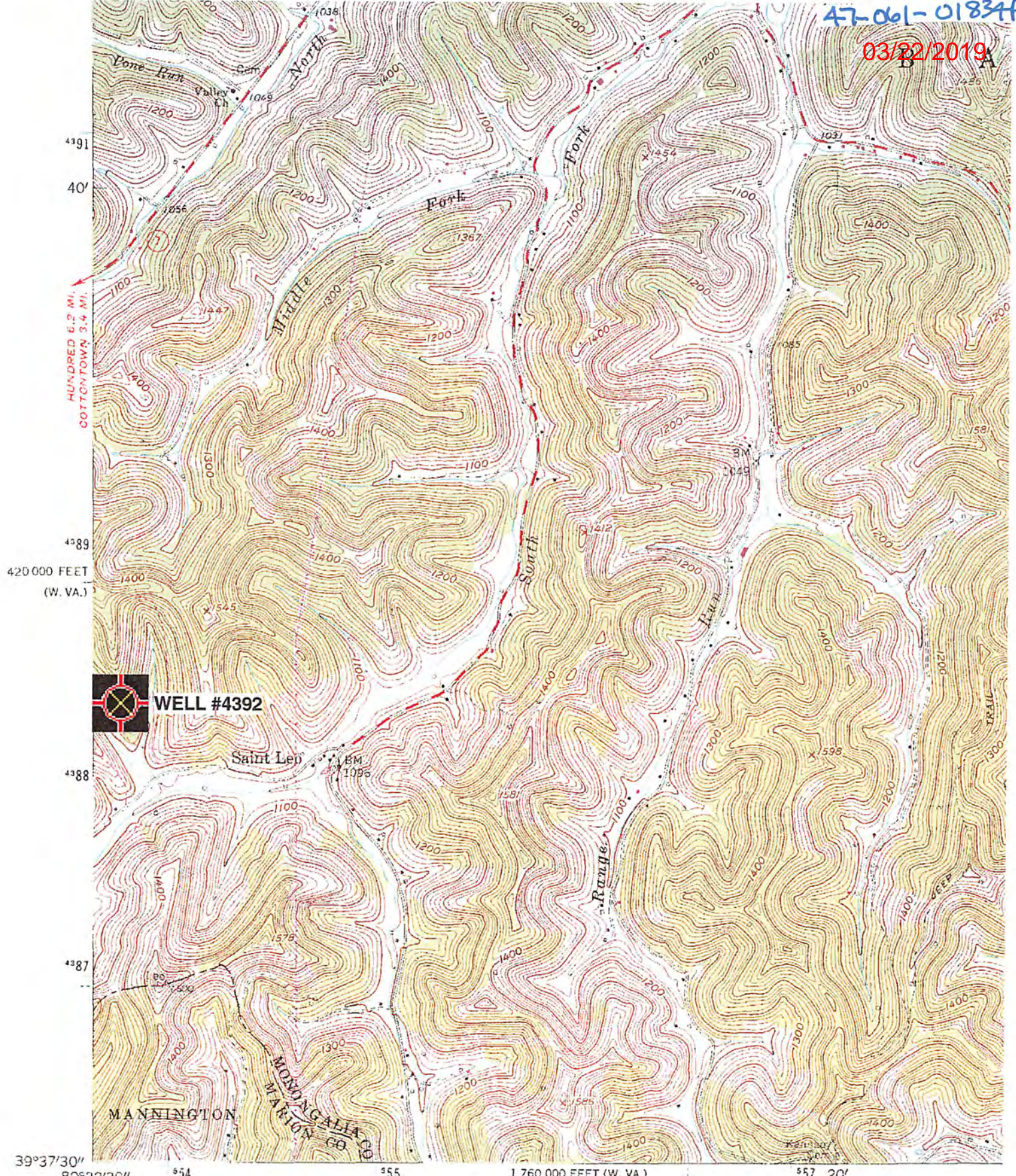
Professional Surveyor
Title

JANUARY 18, 2019
Date

RECEIVED
Office of Oil and Gas
JAN 24 2019
WV Department of
Environmental Protection

47-061-01834P

03/22/2019

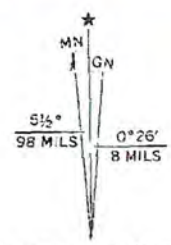


WELL #4392

(GLOVER GAP)
4953 III SW

Mapped, edited, and published by the Geological Survey
 Control by USGS and USC&GS
 Topography from aerial photographs by photogrammetric methods
 Aerial photographs taken 1956. Field check 1958

Polyconic projection. 1927 North American datum
 10,000-foot grids based on West Virginia coordinate system,
 north zone, and Pennsylvania coordinate system, south zone
 1000-meter Universal Transverse Mercator grid ticks,
 Madestown; WV, PA' Scale: 1" = 0.379Mi 610Mt 2,000Ft, 1 Mi = 2.640", 1 cm = 240Mt



UTM GRID AND 1976 MAGNETIC NORTH DECLINATION AT CENTER OF SHEET

RECEIVED
 Office of Oil and Gas
 JAN 24 2019
 WV Department of Environmental Protection