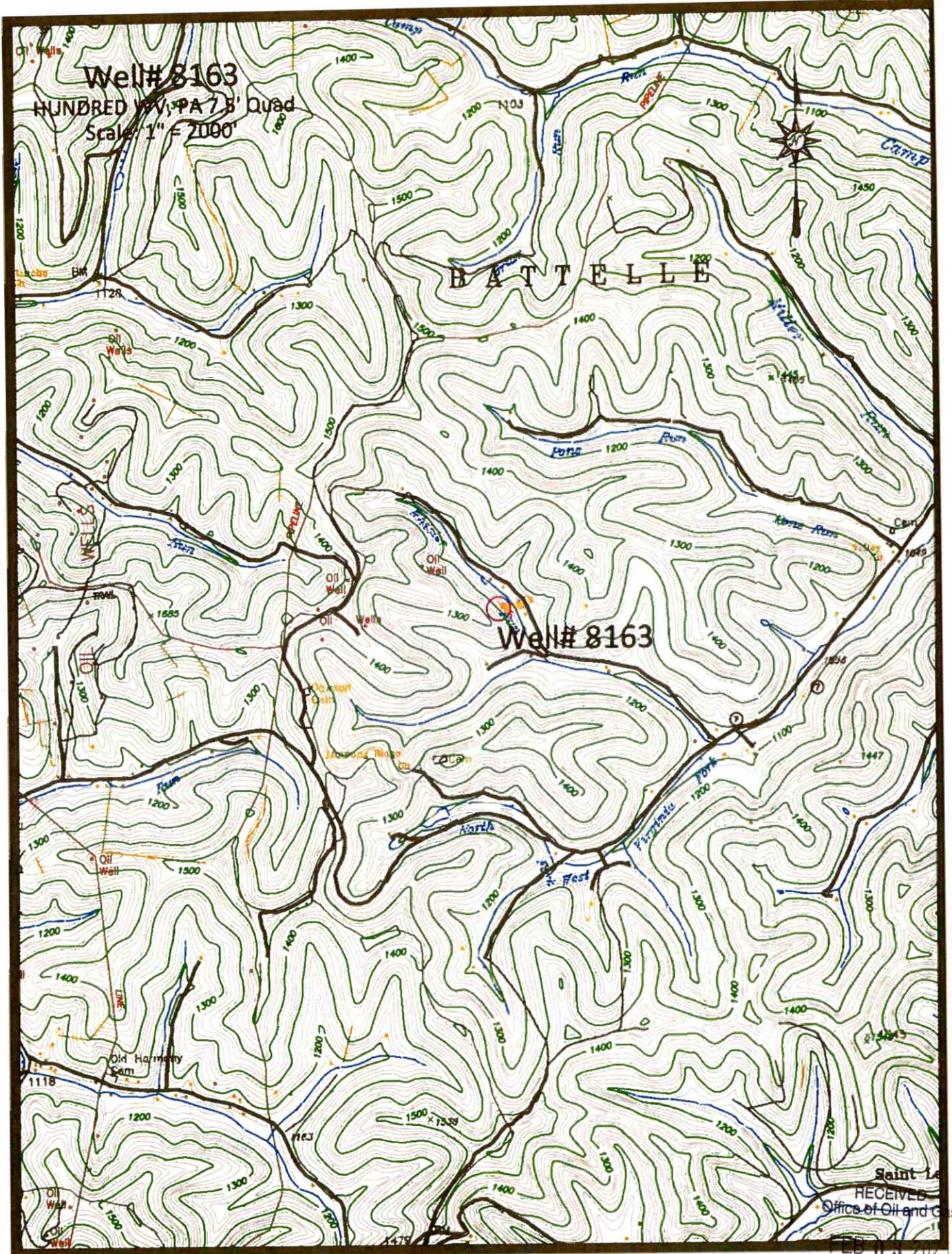


43°56'  
 42°30"  
 43°54'  
 43°52'  
 43°50'  
 43°48'  
 43°46'  
 43°44'  
 43°42'  
 43°40'

(WADESTOWN)  
 4963 III NE


'Hundred; WV,PA' Scale: 1" = 0.379Mi 610Mt 2,000Ft, 1 Mi = 2.640' , 1 cm = 240Mt North

RECEIVED  
 Office of Oil and Gas  
 FEB 03 2025  
 WV Department of  
 Environmental Protection



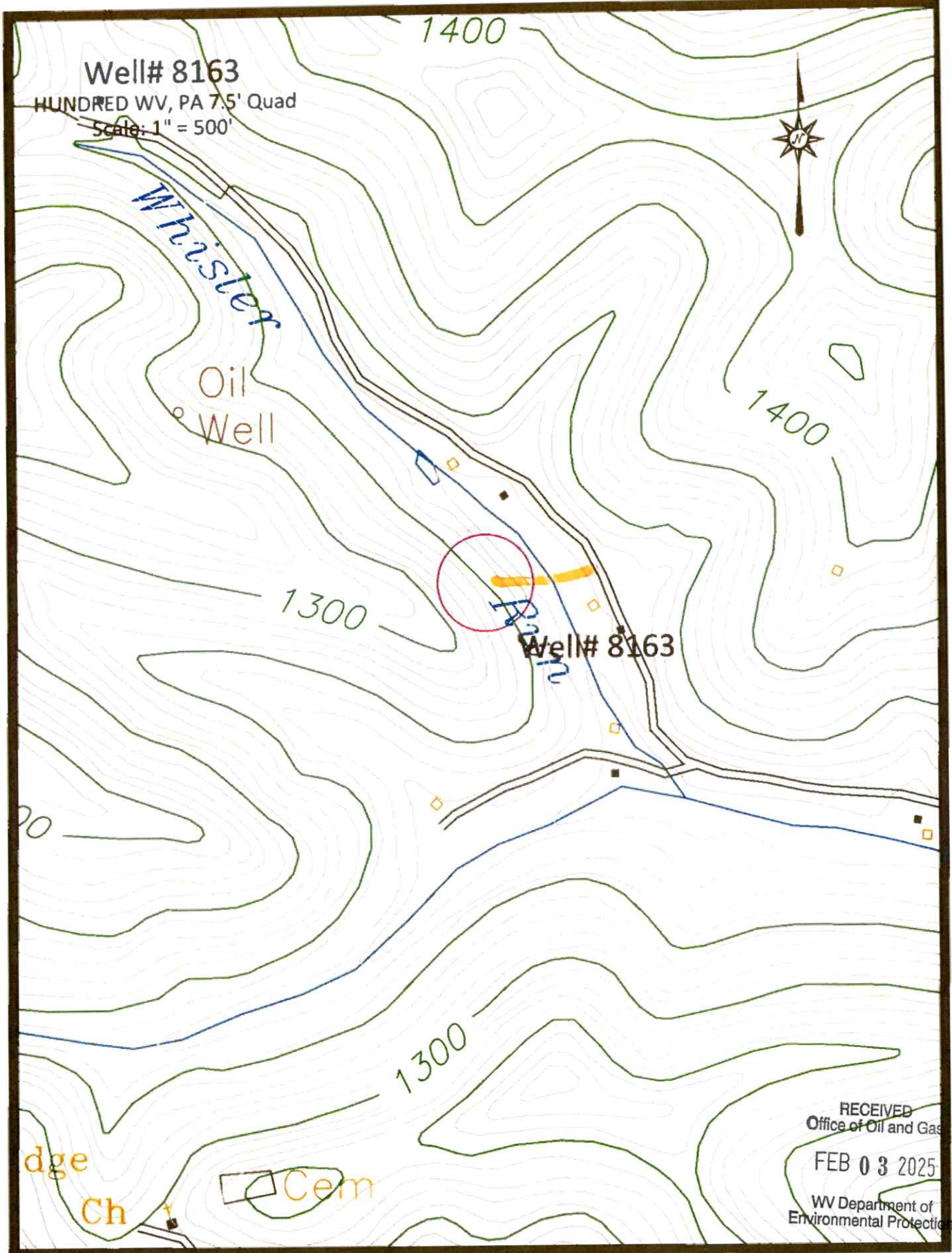
Well# 8163  
 HUNDRED YV, PA 7 B Quad  
 Scale: 1" = 2000'

Well# 8163

Access Road 

Saint Le  
 RECEIVED  
 Office of Oil and Gas  
 FEB 06 2025

WV Department of  
 Environmental Protection  
 02/21/2025



Well# 8163  
HUNDRED WV, PA 7.5' Quad  
Scale: 1" = 500'



Well# 8163

dge  
Ch

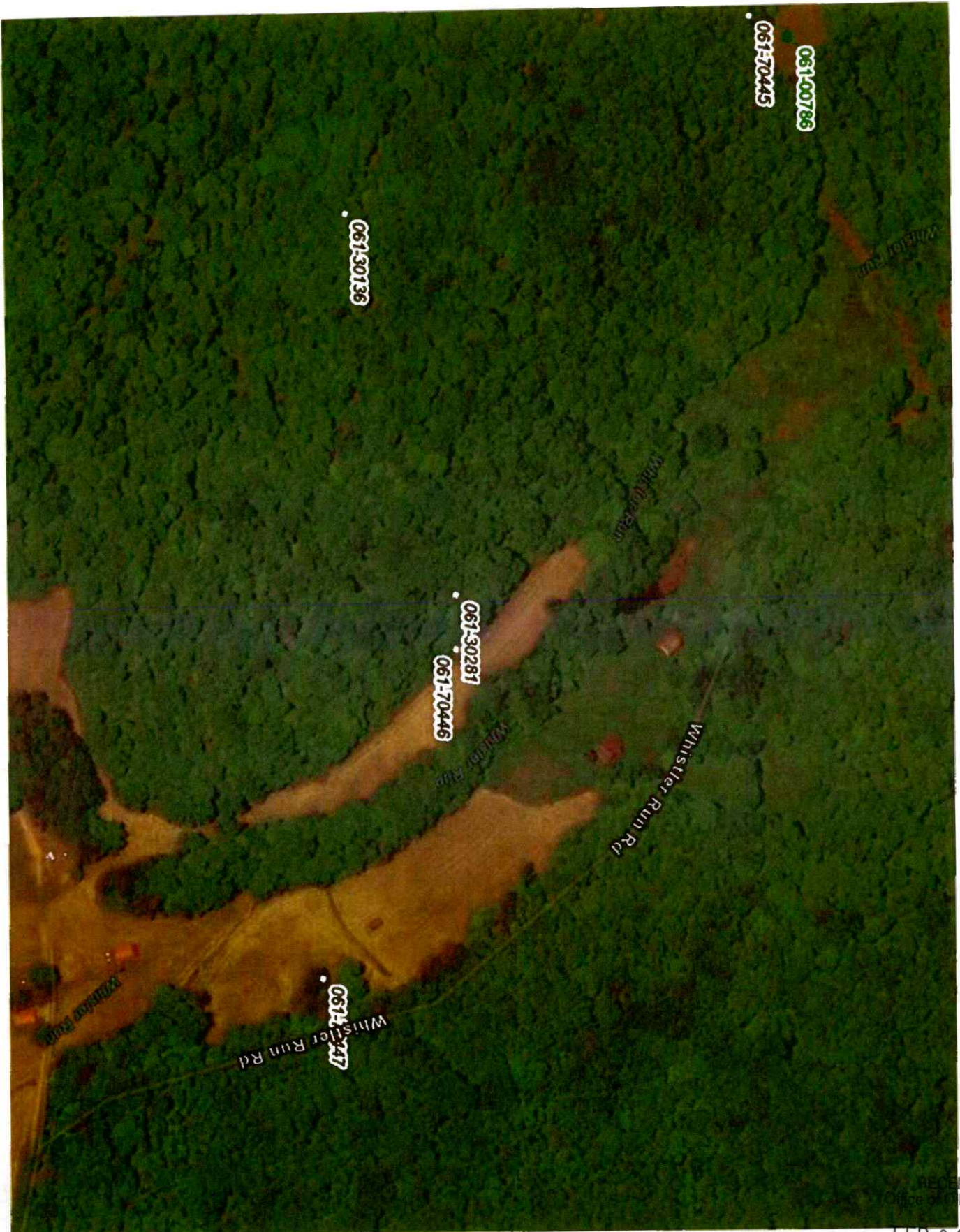
Cem

Access Road

RECEIVED  
Office of Oil and Gas  
FEB 03 2025  
WV Department of  
Environmental Protection

02/21/2025

4706101979



RECEIVED  
Office of Oil and Gas

FEB 03 2025

WV Department of  
Environmental Protection

02/21/2025

4706101979

WW-7  
8-30-06



West Virginia Department of Environmental Protection  
Office of Oil and Gas

**WELL LOCATION FORM: GPS**

API: 47-061-30281 WELL NO.: 8163

FARM NAME: MASON S. HENDERSON

RESPONSIBLE PARTY NAME: WEST VIRGINIA LAND RESOURCES INC.

COUNTY: MONONGALIA DISTRICT: BATTELLE

QUADRANGLE: HUNDRED W.VA, PA

SURFACE OWNER: KANDY L. & RANDY L. EARL

ROYALTY OWNER: \_\_\_\_\_

UTM GPS NORTHING: 4,391,122 m

UTM GPS EASTING: 552,312 m GPS ELEVATION: 364 m

The Responsible Party named above has chosen to submit GPS coordinates in lieu of preparing a new well location plat for a plugging permit or assigned API number on the above well. The Office of Oil and Gas will not accept GPS coordinates that do not meet the following requirements:

- Datum: NAD 1983, Zone: 17 North, Coordinate Units: meters, Altitude: height above mean sea level (MSL) – meters.
- Accuracy to Datum – 3.05 meters
- Data Collection Method:

Survey grade GPS  : Post Processed Differential \_\_\_\_\_  
Real-Time Differential

Mapping Grade GPS \_\_\_\_\_ : Post Processed Differential \_\_\_\_\_  
Real-Time Differential \_\_\_\_\_

- Letter size copy of the topography map showing the well location.**

I the undersigned, hereby certify this data is correct to the best of my knowledge and belief and shows all the information required by law and the regulations issued and prescribed by the Office of Oil and Gas.

[Signature]  
Signature

PS 2002  
Title

JANUARY 16, 2025  
Date

RECEIVED  
Office of Oil and Gas

FEB 03 2025

WV Department of  
Environmental Protection

02/21/2025