

Well# 8282  
WADESTOWN WV, PA 7.5' Quad  
Scale: 1" = 2000'

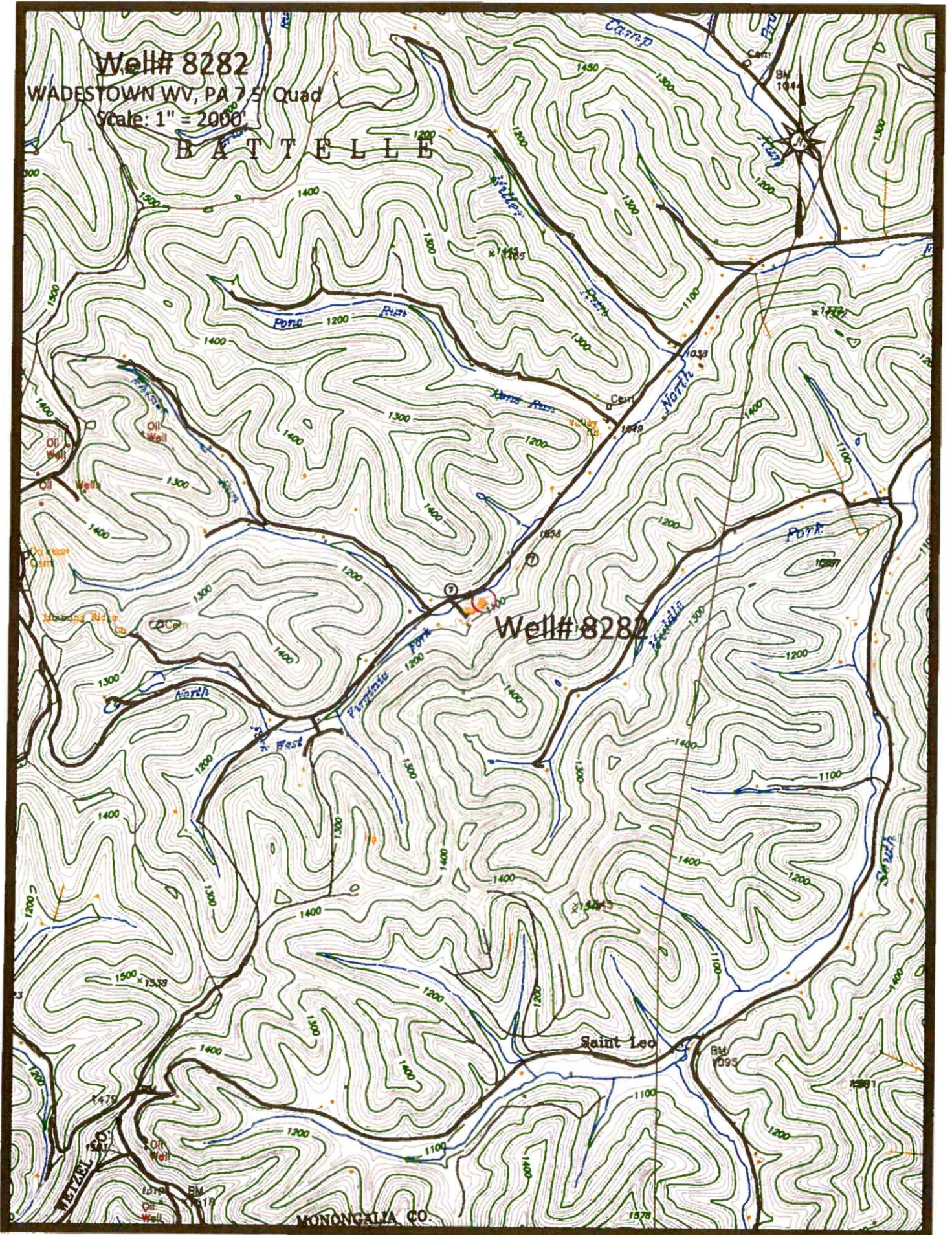
BATTLE

Well# 8282

MONONGALIA CO.

Arisee Run 1

03/07/2025

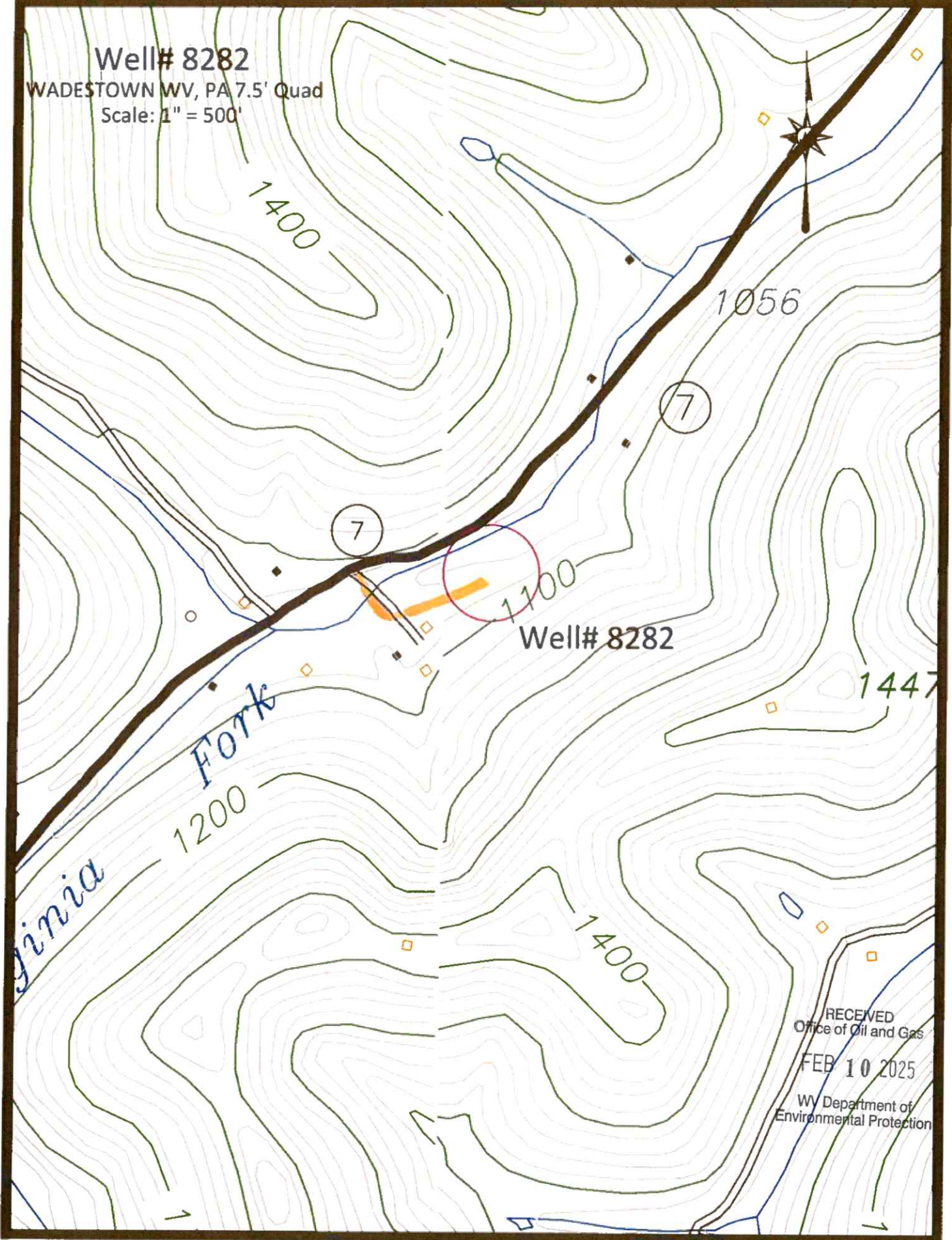




Well# 8282

WADESTOWN WV, PA 7.5' Quad

Scale: 1" = 500'



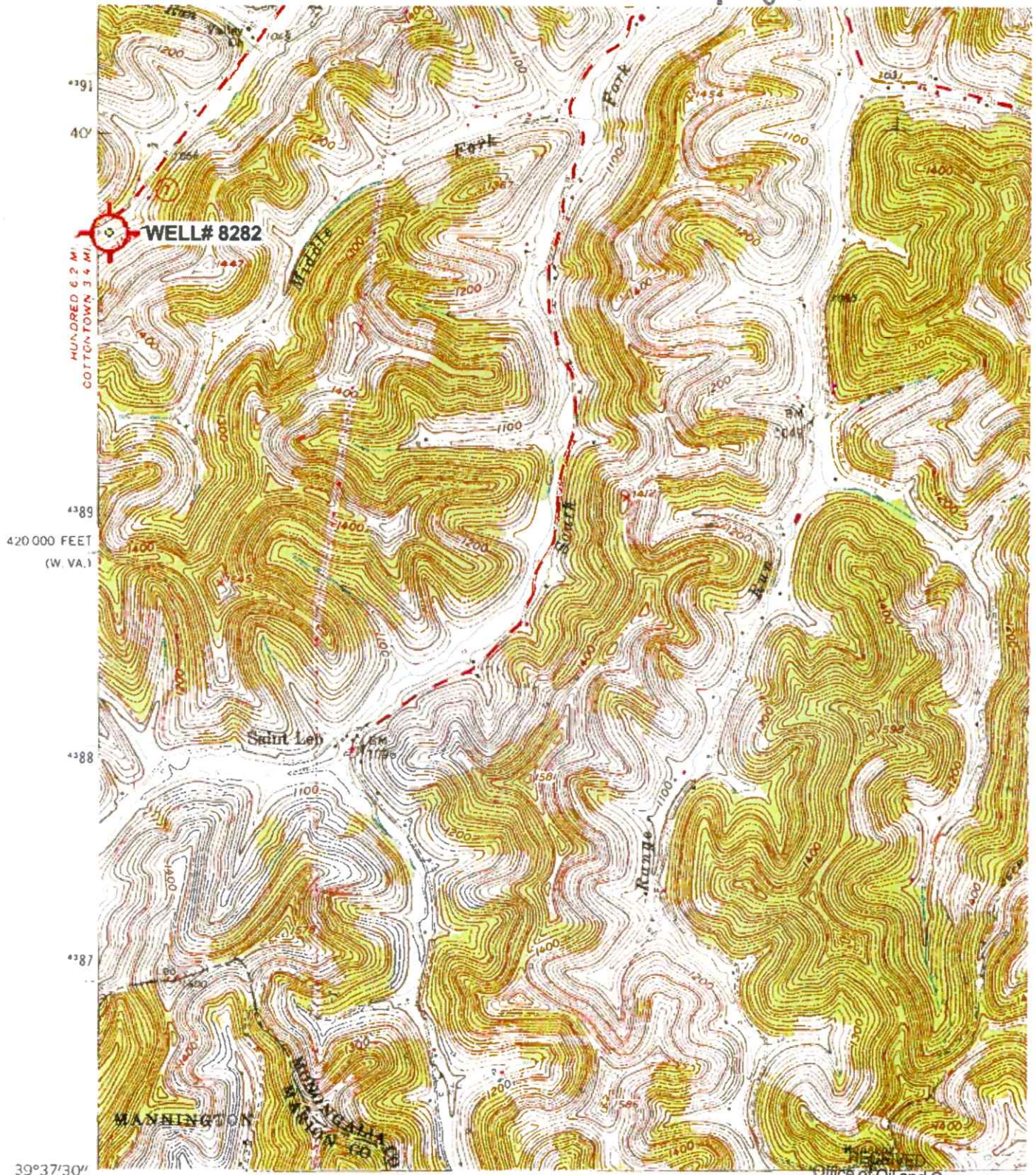
RECEIVED  
Office of Oil and Gas  
FEB 10 2025  
WV Department of  
Environmental Protection

Area 1

03/07/2025



4706101980



39°37'30" 80°22'30" 1760 000 FEET (W. VA.)

Mapped, edited, and published by the Geological Survey

Control by USGS and IUS&GS

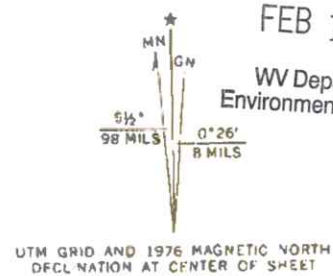
Topography from aerial photographs by photogrammetric methods  
Aerial photographs taken 1956. Field check 1958

Polyconic projection. 1927 North American datum  
10,000-foot grids based on West Virginia coordinate system,  
north zone, and Pennsylvania coordinate system, south zone  
1000-meter Universal Transverse Mercator grid ticks,  
zone 17, shown in blue

Fine red dashed lines indicate selected fence and field lines where  
generally visible on aerial photographs. This information is unchecked

(GLOVERGAP)  
A953 III SW

FEB 10 2025  
WV Department of  
Environmental Protection



UTM GRID AND 1976 MAGNETIC NORTH  
DECLINATION AT CENTER OF SHEET

Wadestown: WV.PA' Scale: 1" = 0.379Mi 610Mt 2.000Ft. 1 Mi = 2.640" 1 cm = 240Mt

03/07/2025



WW-7  
8-30-06



West Virginia Department of Environmental Protection  
Office of Oil and Gas

WELL LOCATION FORM: GPS

API: 47-061-30591 WELL NO.: 8282

FARM NAME: NOAH HENDERSON

RESPONSIBLE PARTY NAME: WEST VIRGINIA LAND RESOURCES INC.

COUNTY: MONONGALIA DISTRICT: BATTELLE

QUADRANGLE: WADESTOWN W.VA, PA

SURFACE OWNER: GEORGE D. SIX

ROYALTY OWNER: \_\_\_\_\_

UTM GPS NORTHING: 4,390,512 m

UTM GPS EASTING: 553,685 m GPS ELEVATION: 325 m

The Responsible Party named above has chosen to submit GPS coordinates in lieu of preparing a new well location plat for a plugging permit or assigned API number on the above well. The Office of Oil and Gas will not accept GPS coordinates that do not meet the following requirements:

1. Datum: NAD 1983, Zone: 17 North, Coordinate Units: meters, Altitude: height above mean sea level (MSL) – meters.
2. Accuracy to Datum – 3.05 meters
3. Data Collection Method:

Survey grade GPS  : Post Processed Differential \_\_\_\_\_

Real-Time Differential

Mapping Grade GPS \_\_\_\_\_ : Post Processed Differential \_\_\_\_\_

Real-Time Differential \_\_\_\_\_

4. Letter size copy of the topography map showing the well location.

I the undersigned, hereby certify this data is correct to the best of my knowledge and belief and shows all the information required by law and the regulations issued and prescribed by the Office of Oil and Gas.

*P.S. 2002*  
Signature

P.S. 2002  
Title

JANUARY 6, 2025  
Date

RECEIVED  
Office of Oil and Gas  
FEB 10 2025  
WV Department of  
Environmental Protection