

LATITUDE 39°40'00"

75'

80°50'08"

LONGITUDE

7'5 OGIS topo location

7.5' loc	<u>0.315</u>	15' loc	<u>0.315</u>
	<u>0.31W</u>	(calc.)	<u>0.31W</u>

Company \_\_\_\_\_

Farm \_\_\_\_\_

Quad Osage (Bulle C)

County Monongahela

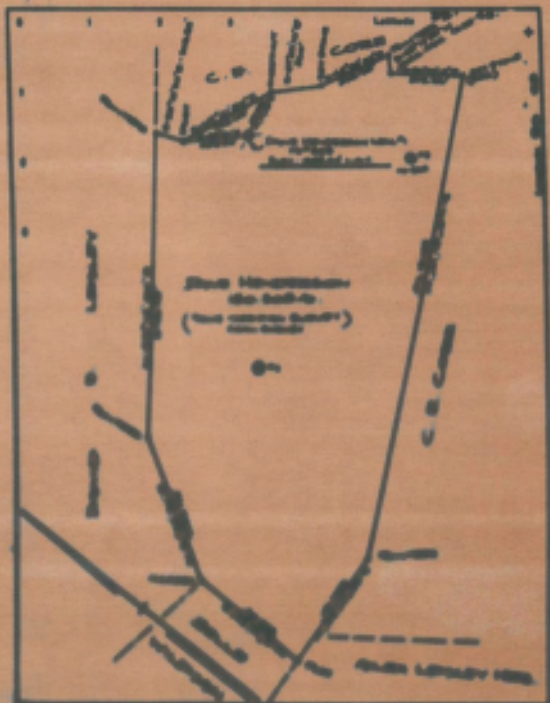
District Cass

WELL LOCATION MAP

File No. 061-147A

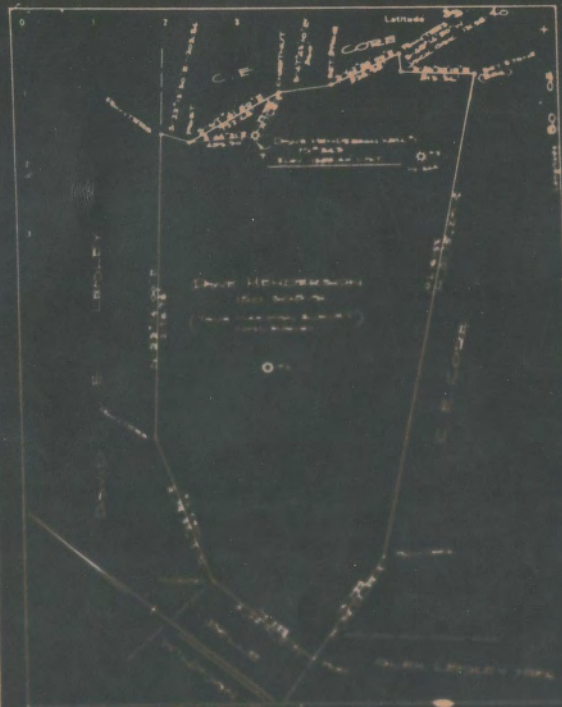
#269 in Co Rpt

061-70356



Name \_\_\_\_\_  
 Address \_\_\_\_\_  
 City \_\_\_\_\_  
 State \_\_\_\_\_  
 Zip \_\_\_\_\_  
 Date \_\_\_\_\_

THIS IS THE LOCATION  
 OF THE WELL  
 ON THE MAP  
 OF THE AREA  
 OF THE AREA  
**WELL LOCATION MAP**  
 FILE NO. \_\_\_\_\_  
 1. This map is not to be used for  
 purposes other than those for  
 which it was prepared.



Scale 1:50,000

Vertical Datum: Mean Sea Level

Horizontal Datum: WGS 84

Projection: UTM

Zone: 48N

Units: Meters

Scale: 1:50,000

Vertical Datum: Mean Sea Level

Horizontal Datum: WGS 84

Projection: UTM

Zone: 48N

Units: Meters

Scale of well location map is 1:50,000

Vertical Datum: Mean Sea Level

Horizontal Datum: WGS 84

Projection: UTM

Zone: 48N

Units: Meters

Scale: 1:50,000

Vertical Datum: Mean Sea Level

Horizontal Datum: WGS 84

Projection: UTM

Zone: 48N

Units: Meters

WELL LOCATION MAP

Scale 1:50,000

Vertical Datum: Mean Sea Level

Horizontal Datum: WGS 84

Projection: UTM

Zone: 48N

Units: Meters

Cass District, Monongalia County, W. Va.  
 Union Utility Co.  
 1-1/3 mi. S. 75-80° W. of Cassville.  
 Elevation, 1340' B.

	Top.	Bottom.
Surface gravel (conductor)	0	18
Slate	18	73
Sand	73	101
Slate and shells	101	171
Lime	171	179
Slate	179	234
Sand (Waynesburg) (Bluff)	234	295
Slate (Cassville Plant Shale)	295	307
Coal (Waynesburg)	307	312
Slate and shells	312	328
Lime	328	341
Slate	341	360
Lime	360	383
Slate and shells	383	401
Lime	401	412
Slate	412	420
Lime	420	432
Slate	432	441
Lime	441	454
Slate and shells	454	480
Lime and sand	480	504
Slate	504	522
Lime and sand	522	539
Slate	539	559
Lime	559	571
Slate	571	586
Coal, (Seiwkoey)	586	592
Lime	592	608
Slate	608	625
Lime	625	643
Slate	643	654
Lime	654	671
Limy sand	671	683
Coal, (Pittsburgh)	683	691
Slate and shells	691	719
Coal, (Little Pittsburgh)	719	723
Lime shells	723	753
Slate	753	818
Sand	818	863
Slate and shells	863	953
Red rock	953	1018
Slate and shells	1018	1088
Sand and lime	1088	1103
Slate	1103	1133
Red rock	1133	1188
Sand, (Buffalo)	1188	1231
Slate	1231	1276
Sand, (Upper Freeport)	1276	1336
Slate	1336	1348
Sand	1348	1371
Slate and shells	1371	1385

(OVER)

Farm \_\_\_\_\_

Quad Osage (Bulle C)

County Monongahela

District Cass

WELL LOCATION MAP

File No. 061-147A

#269 in Co Rpt

061-70356

DAVID HENDERSON NO. 1 WELL (Continued).

	Top.	Bottom.
Sand. (Lower Freeport)	1385	- 1415
Slate	1415	- 1472
Limy sand	1472	- 1504
Slate	1504	- 1528
Sand	1528	- 1540
Slate	1540	- 1546
Sand	1546	- 1691
Slate	1691	- 1704
Sand	1704	- 1744
Slate and shells	1744	- 1799
Red rock	1799	- 1825
Slate and shells	1825	- 1862
Red rock	1862	- 1892
Slate	1892	- 1901
Lime	1901	- 1909
Slate, black	1909	- 1916
Big Lime	1916	- 1976
Sand, Big Injun (gas at 2010' & 2040')	1976	- 2115
Slate and shells	2115	- 2145
Sand, Squaw	2145	- 2177
Slate	2177	- 2312
Sand	2312	- 2392
Limy sand, Berea	2392	- 2437
Slate and shells	2437	- 2527
Sand, (Gantz)	2527	- 2587
Slate	2587	- 2602
Sand, (50-ft.)	2602	- 2642
Red rock	2642	- 2672
(Sand)	2672	- 2712
Red rock	2712	- 2797
(Sand), (Gordon)	2797	- 2837
Slate	2837	- 2867
(Sand), (Fourth)	2867	- 2960
Red rock	2960	- 3030
Sand, Fifth (gas, 46' in sand)	3030	- 3085
Slate	3085	- 3110
Slate and shells	3110	- 3138
Sand, (Bayard or Sixth)	3138	- 3196
Slate	3196	- 3219
Sand, (Elizabeth or Seventh)	3219	- 3276
Slate and lime, to bottom	3276	- 3323

WEST VIRGINIA DEPARTMENT OF MINES  
OIL AND GAS DIVISION

WELL RECORD

Permit No. \_\_\_\_\_

Oil or Gas Well  Gas

Company Monongahela West Penn Public Service Co.  
Address Fairmont, W. Va.  
Name Harry Henderson Acres 180  
Location (waters) Scotts Run  
Well No. 1 M 4045 Elev. 3505, 40'  
District Case County Monongalia

Casing and Tubing	Used in Drilling	Left in Well	Features
			Kind of Packer <u>Neckman 11</u>
Size Spirit Level			Size of S. S. / 1/2" <u>1 1/2"</u>
12	no data	filled	Depth set <u>2000' (1000')</u>
14	" "	" "	
6 1/2	" "	" "	
8 1/4	2000'	2000'	Perf. top <u>2000'</u>
8	2040'	2050'	Perf. bottom <u>2050'</u>
8			Perf. top <u>2050'</u>
8			Perf. bottom <u>2050'</u>
Lines Used	" "	" "	

The surface of tract is owned in fee by Harry Henderson et al. Address Route 68 Morgantown  
Mineral rights are owned by Continental Coal Co. Address Fairmont, W. Va.  
Drilling commenced June 1, 1908  
Drilling completed November 26, 1908  
Date shot Not shot Depth of shot "  
Open Flow 1/16ths Water in 1/16th  
No data 1/16ths Merc. in 1/16th  
Volume 288 Co. Ft. \_\_\_\_\_  
Rock Pressure No data Sp. \_\_\_\_\_  
Oil \_\_\_\_\_ Mile, lat 24 hrs \_\_\_\_\_  
Fresh water \_\_\_\_\_ feet \_\_\_\_\_ feet  
Salt water \_\_\_\_\_ feet \_\_\_\_\_ feet

CASING CEMENTED at 2000' 2050' No. FT. \_\_\_\_\_  
COAL WAS ENCOUNTERED AT 207' 207' 207' 207'  
207' 207' 207' 207'  
207' 207' 207' 207'

Formation	Color	Hard or Soft	Top	Bottom	Oil Gas or Water	Depth Feet	Remarks
Conductor			0	20			
Slate			15	75			
Sand			75	102			
Slate & Shells			102	171			
lime			171	179			
Slate			179	204			
Sand (Wynah)			204	209			
Slate			209	207			
Coal (Wynah)			207	218			
slateshells			218	209			
lime			209	241			
Slate			241	260			
lime			260	263			
slateshells			263	261			
lime			261	233			
Slate			233	230			
lime			230	230			
Slate			230	241			
lime			241	240			
slateshells			240	250			
lime sand			250	254			
Slate			254	252			
lime sand			252	250			
Slate			250	250			
lime			250	271			
Slate			271	260			
Coal-Slipeson			260	260			
lime			260	260			
Slate			260	260			
lime			260	245			
Slate			245	254			
lime			254	271			
lime sand			271	280			
Coal (Pistach)			280	291			
slateshells			291	210			



Formation	Color	Head or Foot	Top	Bottom	Oil, Gas or Water	Depth Feet	Remarks
Sandy lime			1099	1108			
Slate			1108	1128			
Red rock			1128	1180			
Sand (Buffalo)			1180	1281			
Slate			1281	1276			
Sand (Upper Freeport)			1276	1280			
Slate			1280	1240			
Sand			1240	1271			
Slateshells			1271	1285			
Gas Sand			1285	1418			
Slate			1418	1472			
Limy Sand			1472	1506			
Slate			1506	1529			
Sand			1529	1540			
Slate			1540	1546			
Sh. and Salt Sand	Sand		1546	1601			
Slate			1601	1704			
Sand			1704	1706			
Slateshells			1706	1709			
Red rock			1709	1800			
Slateshells			1800	1800			
Red rock			1800	1800			
Slate			1800	1801			
Little Sand			1801	1809			
Small Sand			1809	1816			
Big Sand			1816	1870			
Big Sand			1870	2118	1st. gas 2nd. gas	2020 2040	
Slate			2118	2140			
Sand (Green)			2140	2177			
Slateshells			2177	2212			
Sand (Green)			2212	2407			
Slateshells			2407	2407			
Sandy Sand			2407	2407			
Slate			2407	2408			
SP Sand			2408	2408			
Red rock			2408	2472			
Slateshells			2472	2712			
Red rock			2712	2707			
Green Sand			2707	2707			
Slate			2707	2707			
4th Sand			2707	2707			
Red rock			2707	2707			
5th Sand			2707	2707			
Slateshells			2707	2707	Gas	2070	
Hard Sand			2707	2707			
Slate			2707	2707			
Slateshells			2707	2707			
Slate & Lime			2707	2707			

Total Depth - - - 2020 ft.

