

LATITUDE 39° 45' 00"

79° 55' 00"

LONGITUDE

7.5'

7.5 OGIS topo location

7.5' loc 2.73 S
1.06 W

15' loc 2.73 S
(calc.) 1.06 W

Company _____

Farm _____

Quad Morgantown North (NW)

County Monongahela

District Cass

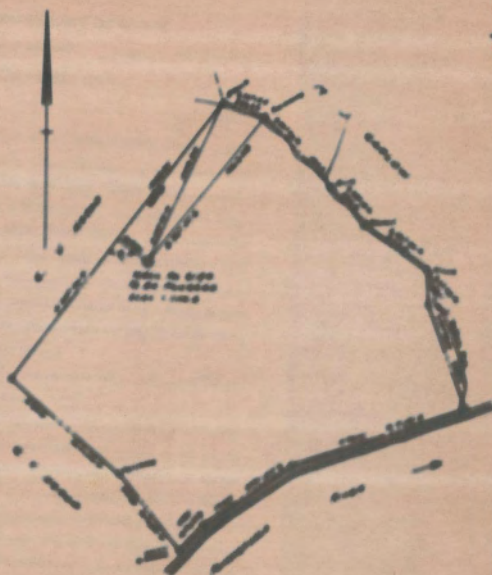
WELL LOCATION MAP

File No. 061-154A

M. 10

1

Latitude 29 00



WELL NO. 1010
G. W. HARRIS
DATE 1-1-1910

Company	A. L. HARRIS OIL & GAS CO.
Address	1000 N. 10th St., Okla. City, Okla.
Field	WAGON MOUNTAIN
Town	Wagon Mtn. Loc. No. 1
Well (Hole) No.	1
Section No.	6/36
Location (Town & Range)	1010
Geological	Wagon Mtn.

STATE OF WEST VIRGINIA
DEPARTMENT OF GEOLOGY
OIL AND GAS DIVISION
WELL LOCATION MAP
FILE NO. 1010-1010

