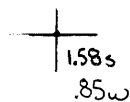


**Latitude**

**Longitude**



**Topo Location**

7.5' Loc. \_\_\_\_\_ 15' Loc. \_\_\_\_\_  
 \_\_\_\_\_ (calc.) \_\_\_\_\_

**Company** Hope Nat Gas

**Farm** J+L Parks #4399

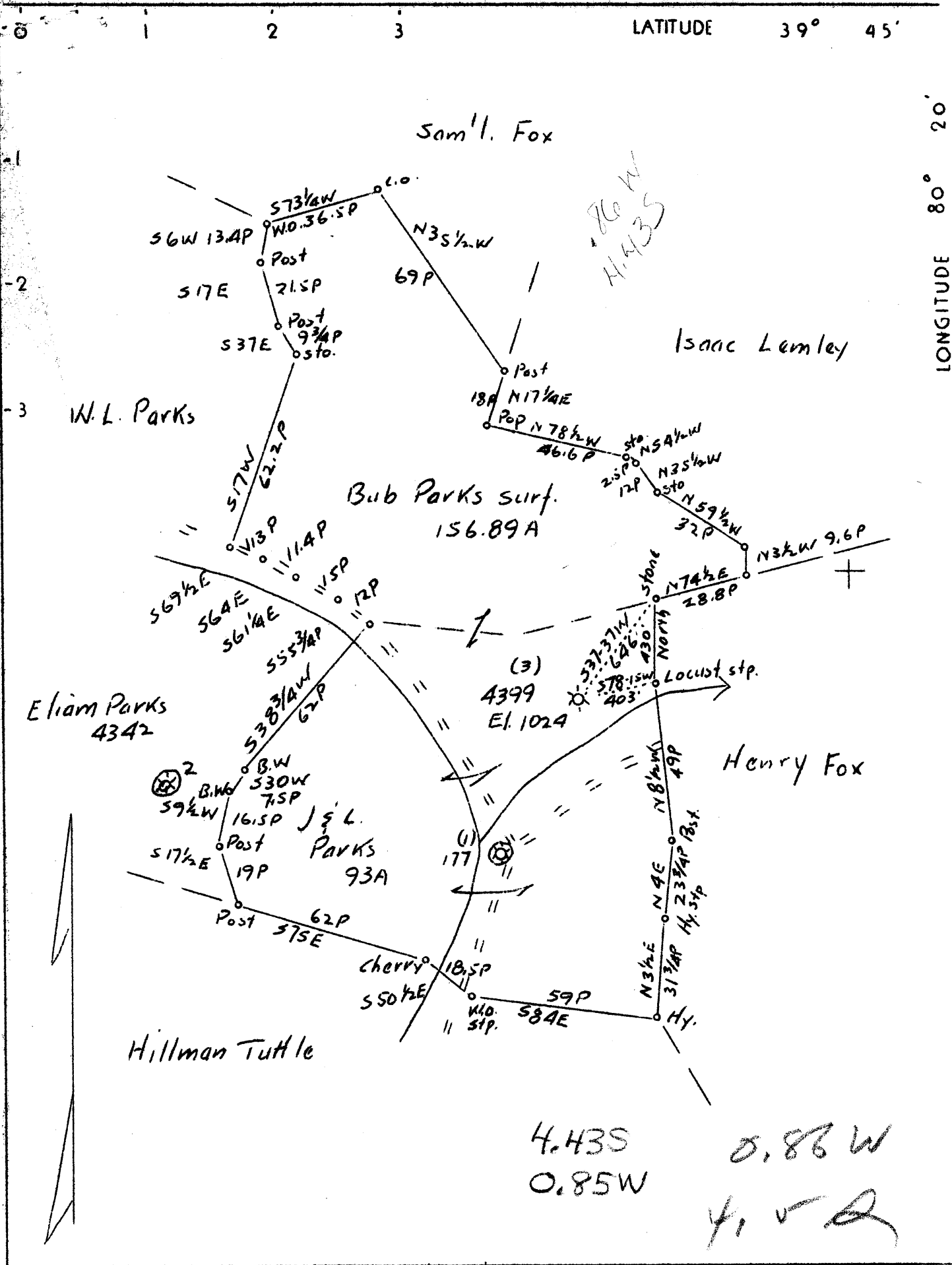
**15' Quad** \_\_\_\_\_  
(sec.)

**7.5' Quad** Wadesturn

**District** Battello

**WELL LOCATION PLAT**

**County** Del **Permit** 30155



4.43S  
0.85W  
0.86W  
H. V. R.

Company	Hope Natural Gas Co	STATE OF WEST VIRGINIA Department of Mines OIL AND GAS DIVISION Charleston  WELL LOCATION MAP  File No. <u>MON-155A</u>  Denotes location of well on U. S. Topographic Maps, scale 1 to 62,500 latitude and longitude lines being represented by border lines as shown.  Denotes one inch spaces on border line of original tracing.
Address	Clarksburg, W. Va.	
Farm	J. & L. Parks	
Tract	Acres 93 Lease No.	
Well(Farm) No.	3 Serial No. 4399	
Elevation (Spirit Level)	1024'	
Quadrangle	Mannington <b>(70)</b>	
County	Monongalia District Battelle	
Engineer	S. H. Bradley	
Engineer's Registration No.	135	
File No.	Drawing No.	
Date	5-4-37 Scale 1" - 40 P	

153A

Battelle District, Monongalia County, W. Va.  
 By Hope Natural Gas Co., Clarksburg, W. Va.  
 On 9 acres, on Miracle Run; surface owned by Dad Parks.  
 Elevation, 1024' L.  
 Drilling commenced 8-16-1916; completed, 10-25-1916.  
 Well was not shot.  
 Fresh water at 100'; salt water at 1690-1695'.  
 10" casing, 738' (pulled); 8 1/2", 1713' (pulled); 6 3/4", 1979';  
 5 1/2", 2239'; 2" tubing, 3185' (pulled).  
 Casing not cemented.  
 Coal was encountered at 628-634 and 715-721'.  
 Gas well. Abandonment reported to Dept. of Mines May 5, 1937.  
 Record to RPT from D. O. Courtney 2-1-38.

	Top.	Bottom.
Coal (fresh water, 100')///	628	634
Pittsburgh Coal	715	721
Little Dunkard Sand	1145	1173
Big Dunkard Sand	1210	1295
First Salt Sand	1520	1584
Second Salt Sand (salt water, 1690-95')	1648	1744
Little Lime	1950	1963
Pencil Cove	1963	1968
Big Lime	1968	2003
Big Injun Sand (gas, 2011-2041')	2003	2194
Squaw Sand	2199	2218
Berea Sand	2275	2300
Gasts Sand	2500	2518
50-Ft. Sand	2602	2658
30-Ft. Sand	2662	2700
Gordon Stray Sand	2874	Shells
Gordon Sand	2935	2975
Fourth Sand	2992	3015
Fifth Sand	3090	3095
Hayard Sand (gas, 3165')	3165	Shells
Total depth		3185

WEST VIRGINIA DEPARTMENT OF MINES  
OIL AND GAS DIVISION

247

WELL RECORD

Permit No. *BB* *NSA*

Oil or Gas Well **Gas**  
(Kind)

Company **Hope Natural Gas Company**  
Address **Clarksburg, W. Va.,**  
Farm **J & L Parks** Acres **9**  
Location (waters) **Miracle Run**  
Well No. **4399** *(3)* Elev. **1024**  
District **B attelle** County **Monongalia**  
The surface of tract is owned in fee by **Bud Parks**  
Address \_\_\_\_\_  
Mineral rights are owned by \_\_\_\_\_  
Address \_\_\_\_\_  
Drilling commenced **8-16-1916**  
Drilling completed **10-25-1916**  
Date shot **Not shot** Depth of shot \_\_\_\_\_  
Open Flow /10ths Water in \_\_\_\_\_ Inch  
/10ths Merc. in \_\_\_\_\_ Inch  
Volume \_\_\_\_\_ Cu. Ft.  
Rock Pressure \_\_\_\_\_ lbs. \_\_\_\_\_ hrs.  
Oil \_\_\_\_\_ bbls., 1st 24 hrs.  
Fresh water **100** feet \_\_\_\_\_ feet  
Salt water **1690-1695** feet \_\_\_\_\_ feet

Casing and Tubing	Used in Drilling	Left in Well	Packers
Size			
16.			Kind of Packer
13.			
10.	<b>738</b>	<b>None</b>	Size of
8 3/4.	<b>1713</b>	<b>None</b>	
6 5/8.	<b>1979</b>	<b>1979</b>	Depth set
5 3/16.	<b>2239</b>	<b>2239</b>	
3.			Perf. top
2.	<b>3185</b>	<b>None</b>	Perf. bottom
Liners Used			Perf. top
			Perf. bottom

CASING CEMENTED \_\_\_\_\_ SIZE \_\_\_\_\_ No. FT. \_\_\_\_\_ Date \_\_\_\_\_  
**Not cemented**  
COAL WAS ENCOUNTERED AT **628** FEET **72** INCHES  
**715** FEET **72** INCHES FEET INCHES  
FEET INCHES FEET INCHES

Formation	Color	Hard or Soft	Top	Bottom	Oil Gas or Water	Depth Found	Remarks
<b>Coal</b>			<b>628</b>	<b>634</b>	<b>Fresh Water</b>	<b>100</b>	
<b>Pittsburgh Coal</b>			<b>715</b>	<b>721</b>			
<b>Little Dunkard Sand</b>			<b>1145</b>	<b>1173</b>			
<b>Big Dunkard Sand</b>			<b>1210</b>	<b>1295</b>			
<b>First Salt Sand</b>			<b>1520</b>	<b>1564</b>			
<b>Second Salt Sand</b>			<b>1648</b>	<b>1744</b>	<b>Salt Water</b>	<b>1690-1695</b>	
<b>Little Lime</b>			<b>1950</b>	<b>1963</b>			
<b>Pencil Cave</b>			<b>1963</b>	<b>1968</b>			
<b>Big Lime</b>			<b>1968</b>	<b>2003</b>			
<b>Big Injun Sand</b>			<b>2003</b>	<b>2194</b>	<b>Gas</b>	<b>2011-2041</b>	
<b>Squaw Sand</b>			<b>2199</b>	<b>2218</b>			
<b>Berea Sand</b>			<b>2275</b>	<b>2300</b>			
<b>Gantz Sand</b>			<b>2500</b>	<b>2518</b>			
<b>Fifty Foot Sand</b>			<b>2602</b>	<b>2658</b>			
<b>Thirty Foot Sand</b>			<b>2662</b>	<b>2700</b>			
<b>Gordon Stray Sand</b>			<b>2874</b>	<b>Shells</b>			
<b>Gordon Sand</b>			<b>2935</b>	<b>2975</b>			
<b>Fourth Sand</b>			<b>2992</b>	<b>3015</b>			
<b>Fifth Sand</b>			<b>3090</b>	<b>3095</b>			
<b>Bayard Sand</b>			<b>3165</b>	<b>Shells</b>	<b>Gas</b>	<b>3165</b>	
		<b>Total Depth</b>		<b>3185</b>			

Formation	Color	Hard or Soft	Top	Bottom	Oil, Gas or Water	Depth Found	Remarks

Date May 5th, 1937, 19.....

APPROVED Hope Natural Gas Company, Owner

By *C. A. Reed*  
 (Title) Asst. General Supt