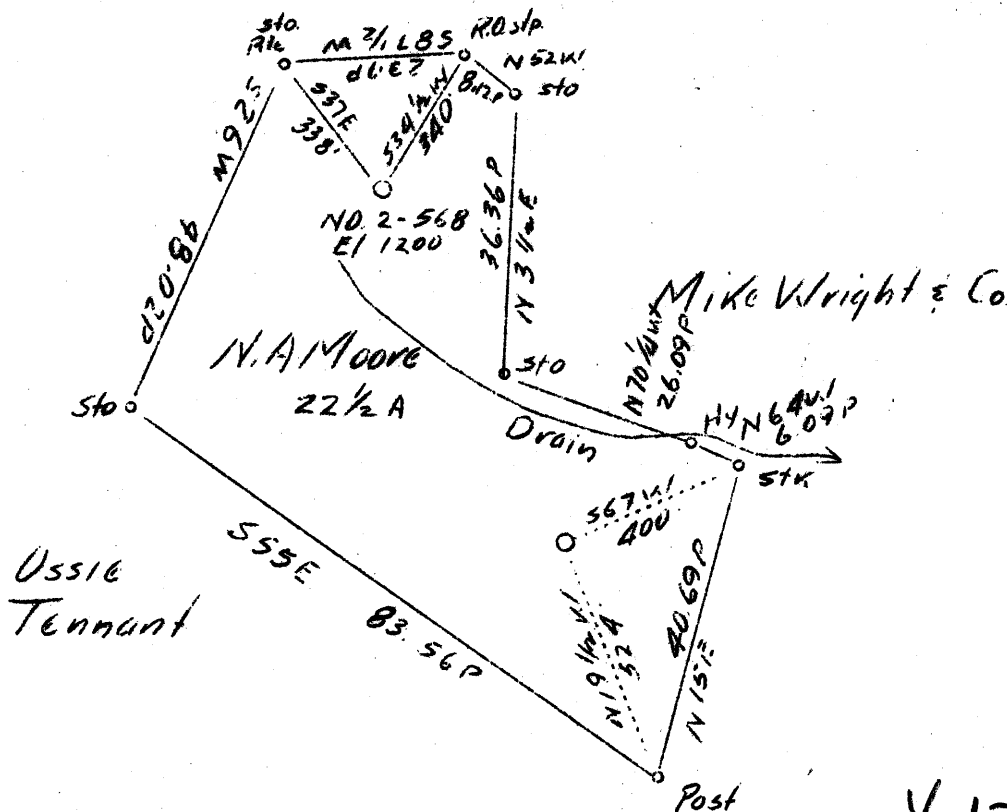


LATITUDE 39° 45'

LONGITUDE 80° 05'

4.08W  
3.66S

Mike Wright & Co.



3.66S  
4.06W

4.12W  
3.7 S

Abandonment

AUG 23 1937

Company	Carnegie Natural Gas Co.
Address	Pittsburgh, Penna.
Farm	N.A. Moore
Tract 1	Acres 22 1/2 Lease No. E-7971-56
Well (Farm) No. 1	Serial No. 509
Elevation (Spirit Level)	1195'
Quadrangle	Blacksville (NE)
County	Monongalia District Clay
Engineer	D.T. Britton
Engineer Registration No.	
Filed No.	Drawing No.
Date	8-9-1937 Scale 1"=400'

STATE OF WEST VIRGINIA  
Department of Mines  
OIL AND GAS DIVISION  
CHARLESTON

WELL LOCATION MAP  
File No. MON-161A

+ Denotes location of well on United States Topographic Maps, scale 1 to 62,500, latitude and longitude lines being represented by border lines as shown.

- Denotes one inch spaces on border line of original tracing.

Clay District, Monongalia County, W. Va.  
 By Carnegie Natural Gas Co., Pittsburgh, Pa.  
 On 25 acres, on Statler Run.

Elevation, 1195' L.

Surface and minerals owned by N. A. Moore, Mooreville, W. Va.

Drilling commenced July 13, 1915; completed, Sept. 10, 1915. (to 2029')

Drilled deeper commenced July, 1918; completed, Aug. 8, 1918 (to 2633')

Drilled deeper commenced July 29, 1924; completed, Oct. 16, 1924 (to 3215'). Plugged back to 3173'. Shot in 50-Ft. Sand, 16 qts., 2615-2615'

Shot in 5th Sand, Oct. 22, 1924, with 10 qts., 3153-3159'

Shot in 5th Sand, Feb. 5, 1929, with 15 qts., 3151-3158'

10" casing, 771'; 6 3/8", 1982'; 6", 5 3/8", 2958'.

Coal was encountered at 390-395, 690-695, and 733-741'.

Anchor packer, 5 1/2" x 6 3/8".

Oil well. Abandonment reported to Dept. of Mines Aug. 12, 1937. 782 Me

Originally a gas well in Big Injun Sand; open flow, 6 1/2/10ths W. in 3".

No oil or gas first deeper drilling. Rock pressure, 420 lbs.

Oil, 3152-3158', in drilling down; 2 bbls., 1st 24 hrs.

Salt water at 1629'.

Record to NGT from D. O. Courtney 2-1-34.

	Top.	Bottom.
Bluff Sand	315	375
Fairview (Waynesburg) Coal	390	395
Mapletown (Sewickley) Coal	690	695
Pittsburgh Coal	733	741
Sand (gas)	900	920
Little Dunkard Sand	1100	1190
Big Dunkard Sand	1250	1304
Gas Sand (gas, 1447'; oil, 1472')	1440	1477
1st Salt Sand	1525	1595
2nd Salt Sand (water, 1629')	1595	1760
Little Lime	1950	1957
Pencil Cave	1957	1960
Big Lime	1960	1995
Big Injun Sand (gas, 2013, 2020, 2036')	1995	
Total depth		2029
DRILLED DEEPER:		
Big Injun Sand		2210
Gantz Sand	2514	2528
50-Ft. Sand (show, 16 qts., 2615-18')	2613	
Total depth		2633
DRILLED DEEPER:		
30-Ft. Sand	2796	2814
Gordon Stubby Sand	2852	2860
Gordon Sand	2870	2885
Fourth Sand	2948	2966
Fifth Sand (oil, 3152-3158')	3148	3162
Bayard Sand	3172	3181
Total depth		3215
Plugged back to depth of		3173

WEST VIRGINIA DEPARTMENT OF MINES  
OIL AND GAS DIVISION

246

WELL RECORD

WELL TO BE ABANDONED

Oil or Gas Well OIL  
(Kind)

MON-166A

Permit No. \_\_\_\_\_  
 Company Carnegie Natural Gas Co  
 Address Pittsburgh Penna  
 Farm N A Moore Acres 25  
 Location (waters) Statler Run  
 Well No. 1-509 Elev. 1195  
 District Clay County Monongalia  
 The surface of tract is owned in fee by N A Moore  
Mooreville Address W Va  
 Mineral rights are owned by Same  
 Address \_\_\_\_\_  
 Drilling commenced July 13 1915  
 Drilling completed Sept 10 1915  
 Date shot See D D Record Below Depth of shot \_\_\_\_\_  
 Open Flow 68 /10ths Water in \_\_\_\_\_ Inch  
 \_\_\_\_\_ /10ths Merc. in \_\_\_\_\_ Inch  
 Volume \_\_\_\_\_ Cu. Ft.  
 Rock Pressure 420 lbs. hrs.  
 Oil 3152-3158 in Drlg Down 2 bbls., 1st 24 hrs.  
 Fresh water \_\_\_\_\_ feet \_\_\_\_\_ feet  
 Salt water 1629 feet \_\_\_\_\_ feet

Casing and Tubing	Used in Drilling	Left in Well	Packers
Size			Kind of Packer
16			<u>Anchor</u>
13		<u>771</u>	Size of <u>5 3/16" x</u>
10			<u>6 5/8"</u>
8 1/4		<u>1982'6"</u>	Depth set
6 5/8		<u>2958</u>	
5 3/16			Perf. top
3			Perf. bottom
2			Perf. top
Liners Used			Perf. bottom

CASING CEMENTED \_\_\_\_\_ SIZE \_\_\_\_\_ No. FT. \_\_\_\_\_ Date \_\_\_\_\_  
 COAL WAS ENCOUNTERED AT 390 FEET \_\_\_\_\_ INCHES  
650 FEET \_\_\_\_\_ INCHES 733 FEET \_\_\_\_\_ INCHES  
 \_\_\_\_\_ FEET \_\_\_\_\_ INCHES \_\_\_\_\_ FEET \_\_\_\_\_ INCHES

Formation	Color	Hard or Soft	Top	Bottom	Oil Gas or Water	Depth Found	Remarks
Bluff Sand			315	375			
Fairview Coal			390	395			
Mapleton Coal			650	655			
Pittsburgh Coal			733	741			
Sand			900	920	Gas		
Little Dunkard			1100	1130			
Big Dunkard			1250	1304	Gas	1447	
Gas Sand			1440	1477	Oil	1472	
1st Salt Sand			1525	1555			
2nd Salt Sand			1595	1760	Water	1629	
Little Lime			1950	1957			
Pencil Cave			1957	1960			
Big Lime			1960	1995			
Big Injun			1995		Gas	2013, 2020, 2036	
Total Depth			2029				
Commenced DD			July 1918				
Completed DD			Aug 8 1918				
Big Injun				2210			
Gantz Sand			2514	2528			
Fifty Foot			2613				(Shot 160 qts 2615-2618) No Oil or Gas first DD
Total Depth			2633				
Commenced DD			July 29 1924				
Completed DD			Oct 16 1924				
Thirty Foot			2796	2814			
Gordon Stray			2852	2860			
Gordon Sand			2870	2885			
Fourth Sand			2948	2966			
Fifth Sand			3148	3162	Oil	3152-3158	
					Shot Oct 22 1924	10 qts.	3153-3159
					Shot Feb 5 1929	15 qts.	3151-3159
Bayard Sand			3172	3181			
Total Depth			3215				
Plugged Back to Depth of			3173				

