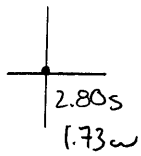


Latitude

Longitude



Topo Location

7.5' Loc. _____ 15' Loc. _____
 _____ (calc.) _____

Company Manufact Lt+Ht

Farm Marshall Garlow #1

15' Quad _____
(sec.)

7.5' Quad Morgantown North

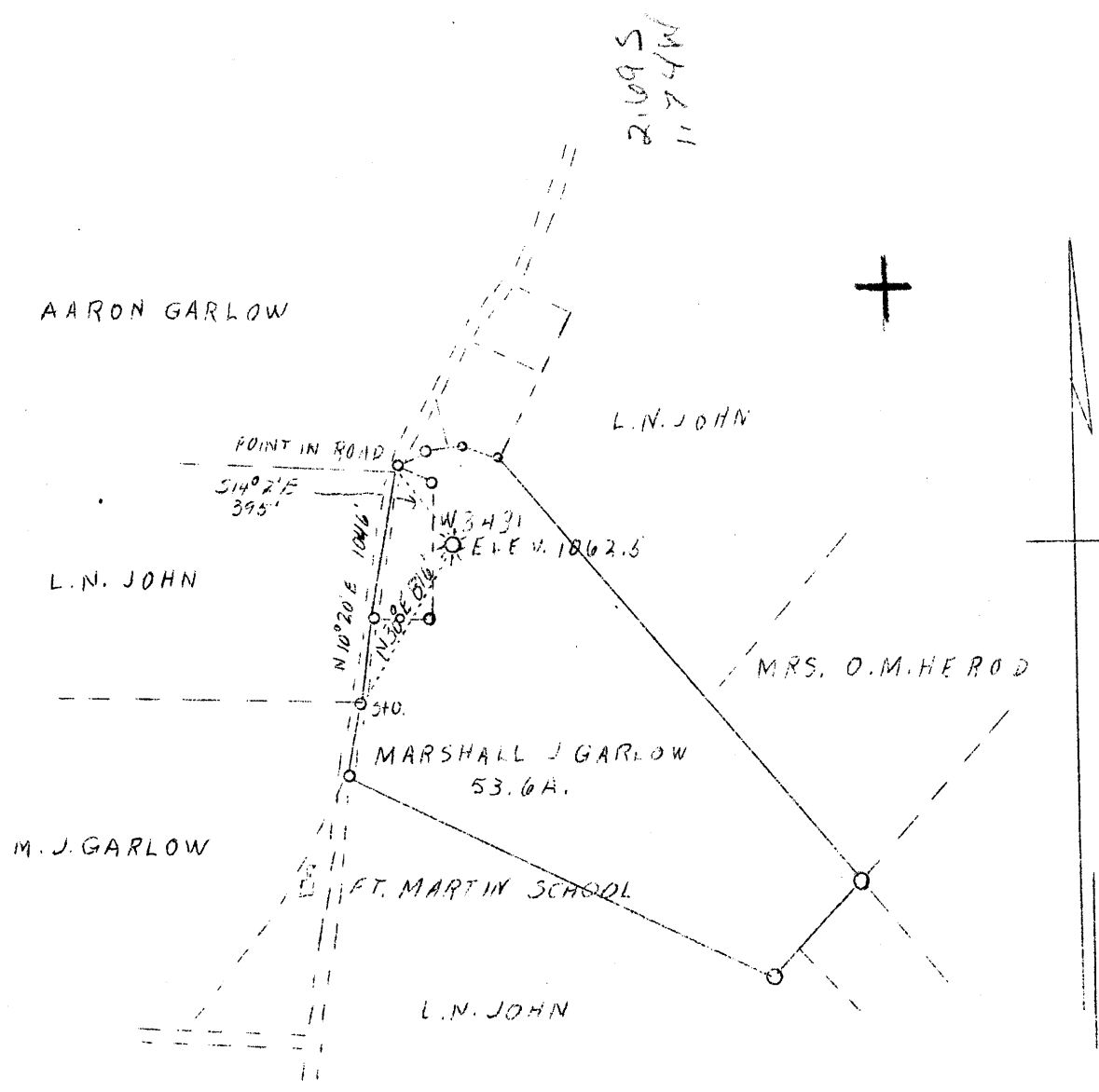
District Cass

WELL LOCATION PLAT

County 061 **Permit** 30191

LATITUDE 39°45'

LONGITUDE 79°55'



WELL ABD

10/28/1938

Company The Mfg. Light & Heat
 Address 800 Union Tr't. Bldg. Pitts.
 Farm Marshall H. Garlow
 Acres 53.6
 Lease No. 14588
 Well (Farm) No. 1
 Serial No. 3431
 Elev. (Spirit Level) 1062.5
 Quadrangle Morgantown N.W. 1/4
 County Monongalia
 District Cass
 Eng.
 Drawing No. y 8 - 150
 Date 11/17/38
 Scale 1 1" - 800'

NW

STATE OF WEST VIRGINIA
 Department of Mines
 OIL AND GAS DIVISION
 Charleston

WELL LOCATION MAP

File No. MON-191-A

x Denotes location of well on U.S. Topographic Maps, scale 1 to 62,500, latitude and longitude lines being represented by border lines as shown.

- Denotes one inch spaces on border line of original tracing.

STATE OF WEST VIRGINIA
DEPARTMENT OF MINES
OIL AND GAS DIVISION

264

AP-191-A

WELL RECORD

Permit No. Purchased from Point Marion
Natural Gas Company 2/25/30

Oil or Gas Well Gas
(Kind)

Company The Manufacturers Light & Heat Co.
Address 800 Union Trust Bldg., Pittsburgh, Pa.
Farm M. J. Garlow Acres 53
Location (waters) _____
Well No. 6-3431 Elev. 1062.5
District Cass County Monongalia
The surface of tract is owned in fee by M. J. Garlow
R.F.D. 1 Address Maidsville, WVa.
Mineral rights are owned by The Mfrs. Light & Heat Co
800 Union Trust Bldg. Address Pittsburgh, Pa.
Drilling commenced January 16, 1917
Drilling completed March 9, 1917
Date shot _____ Depth of shot _____
Open Flow /10ths Water in _____ Inch
/10ths Merc. in _____ Inch
Volume _____ Cu. Ft.
Rock Pressure _____ lbs. _____ hrs.
Oil _____ bbls., 1st 24 hrs.
Fresh water _____ feet _____ feet
Salt water _____ feet _____ feet

| Casing and Tubing | Used in Drilling | Left in Well | Packers |
|-------------------|------------------|--------------|---------------------|
| Size | | | |
| 16. | | | Kind of Packer..... |
| 13. | | | |
| 10. | | | Size of..... |
| 8 1/4 | | | |
| 6 5/8 | | | Depth set..... |
| 5 3/16 | | | |
| 3. | | | Perf. top..... |
| 2. | | | Perf. bottom..... |
| Liners Used | | | Perf. top..... |
| | | | Perf. bottom..... |

CASING CEMENTED _____ SIZE _____ No. FT. _____ Date _____
COAL WAS ENCOUNTERED AT 55 1/2 FEET 60 INCHES
779 FEET 72 INCHES _____ FEET _____ INCHES
_____ FEET _____ INCHES _____ FEET _____ INCHES

| Formation | Color | Hard or Soft | Top | Bottom | Oil Gas or Water | Depth Found | Remarks |
|--------------|-------|--------------|------|--------|------------------|-------------|-----------------------|
| Conductor | | | | 7 | | | |
| Sand | | | 7 | 17 | | | |
| Slate | | | 17 | 27 | | | |
| Lime | | | 27 | 57 | | | |
| Slate | | | 57 | 77 | | | |
| Lime | | | 77 | 107 | | | |
| Slate | | | 107 | 127 | | | |
| Sand | | | 127 | 137 | | | |
| Red Rock | | | 137 | 147 | | | |
| Slate | | | 147 | 160 | | | |
| Lime | | | 160 | 175 | | | |
| Red Rock | | | 175 | 185 | | | |
| Slate | | | 185 | 285 | | | |
| Red Rock | | | 285 | 345 | | | |
| Slate | | | 345 | 379 | | | |
| Sand | | | 379 | 414 | | | |
| Slate | | | 414 | 424 | | | |
| Sand | | | 424 | 454 | | | |
| Slate | | | 454 | 504 | | | |
| Dunkard Sand | | | 504 | 554 | | | |
| Coal | | | 554 | 559 | | | |
| Slate | | | 559 | 589 | | | |
| Sand | | | 589 | 614 | | | |
| Slate | | | 614 | 619 | | | |
| Sand | | | 619 | 624 | | | |
| Slate | | | 624 | 634 | | | |
| Sand | | | 639 | 699 | | | |
| Lime | | | 699 | 719 | | | |
| Slate | | | 714 | 759 | | | |
| Sand | | | 759 | 769 | | | |
| Slate | | | 769 | 779 | | | |
| Coal | | | 779 | 785 | | | |
| Slate | | | 785 | 800 | | | 8" casing 806 ft. |
| Salt Sand | | | 800 | 980 | | | |
| Slate & Lime | | | 980 | 995 | | | 6 5/8" casing 994 ft. |
| Lime & Slate | | | 995 | 1020 | | | |
| Sand | | | 1020 | 1040 | | | |
| Red Rock | | | 1040 | 1120 | | | |
| Slate | | | 1120 | 1125 | | | |
| Little Lime | | | 1125 | 1140 | | | |
| Slate | | | 1140 | 1165 | | | |

| Formation | Color | Hard or Soft | Top | Bottom | Oil, Gas or Water | Depth Found | Remarks |
|---|-------|--------------|--|--------|-------------------|-------------|---|
| Big Line Big Line First Pay Second Pay Drilled in Bottom of hole | | | 1165 1252 1356 1379 1402 1402 | 1252 | 5 3/16" in casing | 1252 ft. | Got 1st pay 10 1/2 feet in sand 1 ft. of pay Got 2nd pay 118 feet in sand 3 ft. of pay |

Date November 18th, 1938

APPROVED THE MANUFACTURERS LIGHT & HEAT CO, Owner

By Harry H. Fowler
Land Dept. (Title) Office Manager