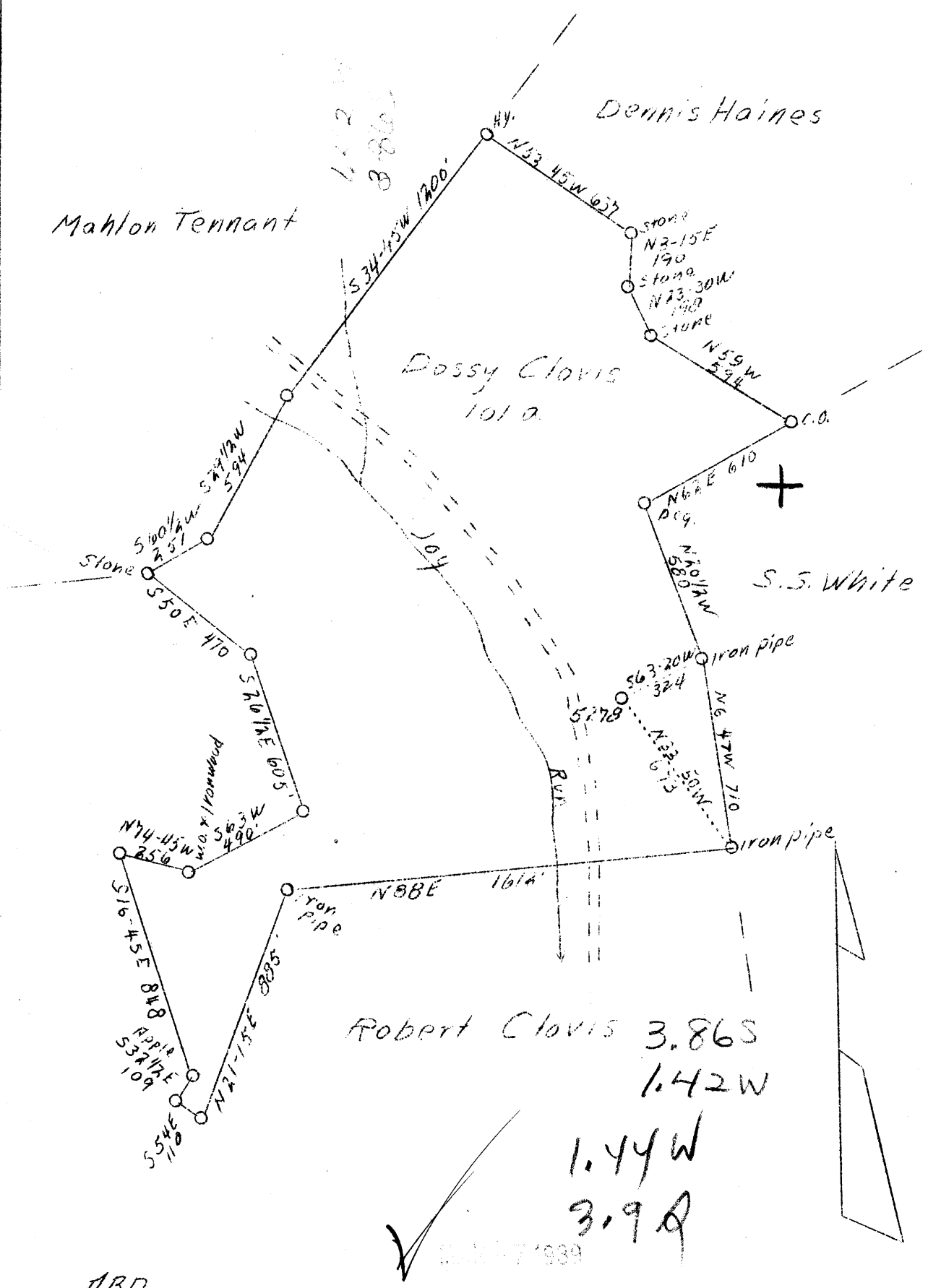


LATITUDE 39° 45'

LONGITUDE 80° 20'



ABD.

Company Pittsburgh & W. Va. Gas Co.
 Address 608 Union Bank, Clarksburg
 Farm Dossy Clovis
 Acres 101
 Lease No. 16150
 Well (Farm) No. 1
 Serial No. 5278
 El. (S. L.) 1146
 Quadrangle Mannington N.E. 1-3
 County Monongalia
 District Battelle
 Eng. James D. Jeffries
 Date 2/20/39
 Scale 1" - 500'

NC

STATE OF WEST VIRGINIA
 Department of Mines
 OIL AND GAS DIVISION
 Charleston
 WELL LOCATION MAP
 File No. MON-193-A

x Denotes location of well on U.S. Topographic Maps, scale 1 to 62,500, latitude and longitude lines being represented by border lines as shown.
 - Denotes one inch spaces on border line of original tracing.

WEST VIRGINIA DEPARTMENT OF MINES
OIL AND GAS DIVISION

267

WELL RECORD

Permit No. _____

Oil or Gas Well _____
(Kind)

Company **Pittsburgh & West Va Gas Company.**
 Address **Clarksburg, West Va.**
 Farm **Dossy Clovis** Acres _____
 Location (waters) **Mann. N.E. 1-3**
 Well No. **5278** Elev. **1146**
 District **Battelle** County **Monongalia**
 The surface of tract is owned in fee by **Dossy Clovis**
 Address **Wadestown, W.Va.**
 Mineral rights are owned by **Dossy Clovis**
 Address **Wadestown, W.Va.**
 Drilling commenced **August 14th, 1918**
 Drilling completed **October 29th, 1918**
 Date shot _____ Depth of shot _____
 Open Flow /10ths Water in _____ Inch
 /10ths Merc. in _____ Inch
 Volume _____ Cu. Ft.
 Rock Pressure _____ lbs. _____ hrs.
 Oil _____ bbls., 1st 24 hrs.
 Fresh water **60-180-190** feet _____ feet
 Salt water _____ feet _____ feet

Casing and Tubing	Used in Drilling	Left in Well	Packers
Size			Kind of Packer
16.	112	112	
13.	1257	1257	Size of
10.	1790		
8 3/4	2145	2145	Depth set
6 5/8			
5 3/16			
3.			Perf. top
2.			Perf. bottom
Liners Used			Perf. top
			Perf. bottom

CASING CEMENTED _____ SIZE _____ No. FT. _____ Date _____
 COAL WAS ENCOUNTERED AT **815** FEET **60** INCHES
912 FEET **96** INCHES FEET _____ INCHES
 FEET _____ INCHES FEET _____ INCHES

Formation	Color	Hard or Soft	Top	Bottom	Oil Gas or Water	Depth Found	Remarks
Slate	Yellow		0	16			
Line	White		16	20			
Slate	Dark		20	30			
Line	White		30	40			
Slate	"		40	60	Water	60'	
Line	"		60	70			
Slate-Line			70	500	Water	180-190'	
Bluff Sand			500	575			
Slate-Line			575	815			
M.F. Coal			815	820			
Slate-Line			820	912			
Pgh. Coal			912	920			
Line	White		920	980			
Slate-Line	Dark		980	1010			
Red Rock	Red		1010	1025			
Line	Dark		1025	1040			
Murphy Sand	White		1040	1052			
Slate	Red		1052	1065			
Slate-Line	"		1065	1090			
Line	White		1090	1100			
Slate			1100	1105			
Slate-Line	Red		1105	1130			
Slate	"		1130	1140			
Line	White		1140	1145			
Slate	Dark		1145	1152			
Line	White		1152	1180			
Slate-Red Rock			1180	1190			
Line-Slate	Red		1190	1210			
Slate	Red		1210	1230			
Line	White		1230	1260			
Slate	Dark		1260	1300			
Line	White		1300	1340			
L. Dunkard	"		1340	1365			
Slate	Dark		1365	1400			
Line	White		1400	1410			
Big Dunkard			1410	1425			
Slate	Dark		1425	1440			
Line	White		1440	1450			
Slate-Line	"		1450	1505			
Gas Sand	"		1505	1530			
Line	"		1530	1562			



Formation	Color	Hard or Soft	Top	Bottom	Oil, Gas or Water	Depth Found	Remarks
Slate	Black		1562	1568			
Lime	White		1568	1585			
1st.Salt	"		1585	1666			
Slate	Dark		1666	1670			
Sand	White		1670	1720			
Slate-Lime	Black		1720	1780			
Sand	White		1780	1794			
Lime-Slate	Dark		1794	2000			
Red Rock	Red		2000	2020			
Lime	Dark		2020	2060			
Red Rock	Red		2060	2115			
Slate&Shells	Dark		2115	2122			
Slate	Red		2122	2129			
Lime	White		2129	2131			
Slate	"		2131	2136			
Big Lime			2136	2197			
Big Injun			2197	2437			
Slate			2437	2500			
Slate-Lime shells			2500	2525			
Lime			2525	2560			
Slate-Shells			2560	2620			
Slate			2620	2720			
Gantz Sand			2720	2767			
Slate			2767	2771			
Slate&Lime Shells			2771	2800			
Lime			2800	2825			
Slate&Lime shells			2825	2880			
Fifty Foot			2880	2918	Show Gas	2895'	
Slate			2918	2925			
Thirty Foot			2925	2970	Gas	2935'	
Slate			2970	2990	Gas	2962'	
Stray Sand			2990	3013			
Slate			3013	3032			
Gordon Sand			3032	3068			
Slate			3068	3090			
4th.Sand			3090	3145			
Slate&Shells			3145	3185			
5th.Sand			3185	3203			
Slate			3203	3215			
Sand			3215	3240			
Slate&Lime			3240	3344			
Hayard Sand			3344	3346	Gas	3344'	
Slate			3346	3366			
Total Depth-----				3366			

Date August 31st, 1938, 19.....

APPROVED PITTSBURGH & WEST VA GAS CO., Owner

By J. E. Higgins (Title)

Battelle District, Monongalia County, W. Va.

By Pittsburgh & W. Va. Gas Co., Clarksburg, W. Va.

Hannington N/E 1-3.

Elevation, 1146' L.

Surface and minerals owned by Dossy Glovis, Madestown, W. Va.

Drilling commenced Aug. 14, 1915; completed, Oct. 29, 1915.

Fresh water at 60, 150-190'.

13" casing, 112'; 10", 1257'; 8", 1790' (pulled); 6", 2145'.

Coal was encountered at 515-520 and 912-920'.

Gas well. Abandonment reported to Dept. of Mines Aug. 31, 1935.

Record to RCE from Mrs. Griffith March 6, 1939.

	Top.	Bottom.
Slate, yellow	0	16
Lime, white	16	20
Slate, dark	20	30
Lime, white	30	40
Slate, white (water, 60')	40	60
Lime, white	60	70
Slate-Lime (water, 150-190')	70	500
Bluff Sand	500	575
Slate-Lime	575	515
Keokuk (Sawickley) Coal	515	520
Slate-Lime	520	912
Pittsburgh Coal	912	920
Lime, white	920	950
Slate-Lime, dark	950	1010
Red rock	1010	1025
Lime, dark	1025	1040
Murphy Sand, white	1040	1052
Slate, red	1052	1065
Slate-Lime, red	1065	1090
Lime, white	1090	1100
Slate	1100	1105
Slate-Lime, red	1105	1130
Slate, red	1130	1140
Lime, white	1140	1145
Slate, dark	1145	1152
Lime, white	1152	1160
Slate-Red rock	1160	1190
Slate-Lime-Slate , red	1190	1210
Slate, red	1210	1230
Lime, white	1230	1260
Slate, dark	1260	1300
Lime, white	1300	1340
Little Dunkard Sand, white	1340	1365
Slate, dark	1365	1400
Lime, white	1400	1420
Big Dunkard Sand	1420	1425
Slate, dark	1425	1440
Lime, white	1440	1450
Slate-Lime, white	1450	1505
Gas Sand, white	1505	1530
Lime, white	1530	1562
Slate, black	1562	1568
Lime, white	1568	1585
1st Salt Sand, white	1585	1666
Slate, dark	1666	1670

(OVER)

DOSEY GLAUBIS NO. 5278 WELL (Continued).

	Top.	Bottom.
Sand, white	1670	1720
Slate-lime, black	1720	1780
Sand, white	1780	1794
Lime-slate, dark	1794	2000
Red rock	2000	2020
Lime, dark	2020	2060
Red rock	2060	2115
Slate and shells, dark	2115	2122
Slate, red	2122	2129
Lime, white	2129	2131
Slate, white	2131	2136
Big lime	2136	2197
Big Injun Sand	2197	2437
Slate	2437	2500
Slate-lime shells	2500	2525
Lime	2525	2560
Slate-shells	2560	2620
Slate	2620	2720
Grain Sand	2720	2767
Slate	2767	2771
Slate and lime shells	2771	2800
Lime	2800	2825
Slate and lime shells	2825	2880
Fifty-foot Sand (show gas, 2893')	2880	2918
Slate	2918	2925
Thirty-foot Sand (gas, 2955'; gas, 2962')	2925	2970
Slate	2970	2990
Stony Sand	2990	3013
Slate	3013	3032
Garden Sand	3032	3068
Slate	3068	3090
4th Sand	3090	3105
Slate and shells	3105	3185
5th Sand	3185	3205
Slate	3205	3225
Sand	3225	3240
Slate and lime	3240	3304
Byard Sand (gas, 3304')	3304	3306
Slate	3306	3366
Total depth		3366

Record of Well No. 5278 located on *Hossy Clovis* Farm June 10 1918
Battelle District *Monongalia* County *W. Va.* State
 Division "D" District No. "11" Drilled under well Order 1228
 Rig built by *John Craig* Began *July 30* 1918 Completed *Aug. 2* 1918
 Well drilled by *J. B. Foley* Began *Aug. 14* 1918 Completed *Oct. 29* 1918
 Depth of Well *3366* feet Size of Hole *6 7/8* Producing *Gas*
 Elev: *1146*

CASED WITH

Asforden REV. *Phy. March 1929*

AMOUNT	SIZE	KIND	REMARKS
16"	16"	Wood	
112'	13"	Old	<i>Dr. nipple pulled out.</i>
1257'	10"	New Redland	<i>487# 988-11-489-7A 34.5 ft joint</i>
1790'	8 1/4"	New	<i>Reclaimed.</i>
2145'	6 7/8"	New Redland	<i>627# 1202 ft. 3-14-38. 88 ft joint.</i>
3054'	2"	New	<i>Redland</i>
312'	3"	New	<i>Redland</i>

COAL VEINS *Mapletown 815* *Ph. 912*
220 *Ph. 920*

FORMATIONS

NAME	TOP	BOTTOM	OIL	GAS	WATER	REMARKS
<i>Bluff sand</i>	<i>500</i>	<i>575</i>			<i>60</i>	<i>Dec. 18-1936</i>
<i>Marshall sand</i>	<i>1040</i>	<i>1052</i>			<i>190</i>	<i>On bottom of hole</i>
<i>Little Run sand</i>	<i>1340</i>	<i>1365</i>				<i>1-16' sinter sand 76 wire line</i>
<i>Big Run sand</i>	<i>1410</i>	<i>1425</i>				<i>This was faked out.</i>
<i>Sand sand</i>	<i>1505</i>	<i>1520</i>				
<i>1st. salt sand</i>	<i>1585</i>	<i>1666</i>				
<i>2nd. "</i>	<i>1670</i>	<i>1720</i>				
<i>3rd. "</i>	<i>1780</i>	<i>1794</i>				
<i>Little Lime</i>	<i>2129</i>	<i>2131</i>				
<i>Big Lime</i>	<i>2136</i>	<i>2177</i>				
<i>Big Run</i>	<i>2197</i>	<i>2437</i>				
<i>Slate</i>	<i>2272</i>	<i>2283</i>				
<i>Sandy sand</i>	<i>2720</i>	<i>2767</i>				
<i>Fifty feet "</i>	<i>2880</i>	<i>2918</i>		<i>2897</i>		<i>show</i>
<i>Thirty feet "</i>	<i>2925</i>	<i>2970</i>		<i>2930-35</i>		<i>1.8 W 2"</i>
<i>London clay</i>	<i>2990</i>	<i>3013</i>		<i>2762</i>		<i>1.8 W 2"</i>
<i>London sand</i>	<i>3032</i>	<i>3068</i>				
<i>Fourth sand</i>	<i>3090</i>	<i>3145</i>				
<i>Fifth sand</i>	<i>3185</i>	<i>3290</i>				
<i>Slate</i>	<i>3243</i>	<i>3215</i>				
<i>Bayard sand</i>	<i>3343</i>	<i>3346</i>		<i>3344</i>		<i>7.7 W 2"</i>
<i>Total Depth.</i>		<i>3366</i>				

FIRST PRESSURE TEST IN 6 5/8" CASING
6 5/8 X 2

REMARKS

30 Sec.	2	lbs.	1
1 Min.	5	"	3
2 "	7	"	6
5 "	9	"	10
10 "	26	"	17
20 15	50	"	31
30	68	"	

Rock Pressure 146-80 min. in 180-24 hrs.
150-5 hrs.

Taken Oct. 29-1918

19

By

WELL TUBED AND PACKED Nov. 1 1918

VIZ:- 145 yds. 305 1/2 ft. of 2" Tubing.
15 yds. 312 ft. of 3" "
1- 6 5/8 X 3" Anchor Packer.
8 yds. 181 ft. of 3" Anchor
1- 2" P.S. 2.

Replumbed avg 5-37-
O.P. S.

FIRST PRESSURE TEST IN TUBING

REMARKS

30 Sec.	5	lbs.	
1 Min.	10	"	
2 "	18	"	
5 "	36	"	
10 "	64	"	
20 15	110	"	
30	"	"	

Rock Pressure 535-16 hrs. in

Taken Nov. 2, 1918

19

By

MATERIAL FOR THIS WELL RECEIVED FROM FOLLOWING SOURCES:

7000 ft. Lumber, Rig Drags and Rig Timbers (old) from G. W. 5266.
4855 ft. Lumber (new) @ 30.00 - \$145.75 A. J. Riddle
500⁰⁰ nails, Stock
1- Par. Set. Rig Timbers (new) \$20.00 Dossy Clovis.