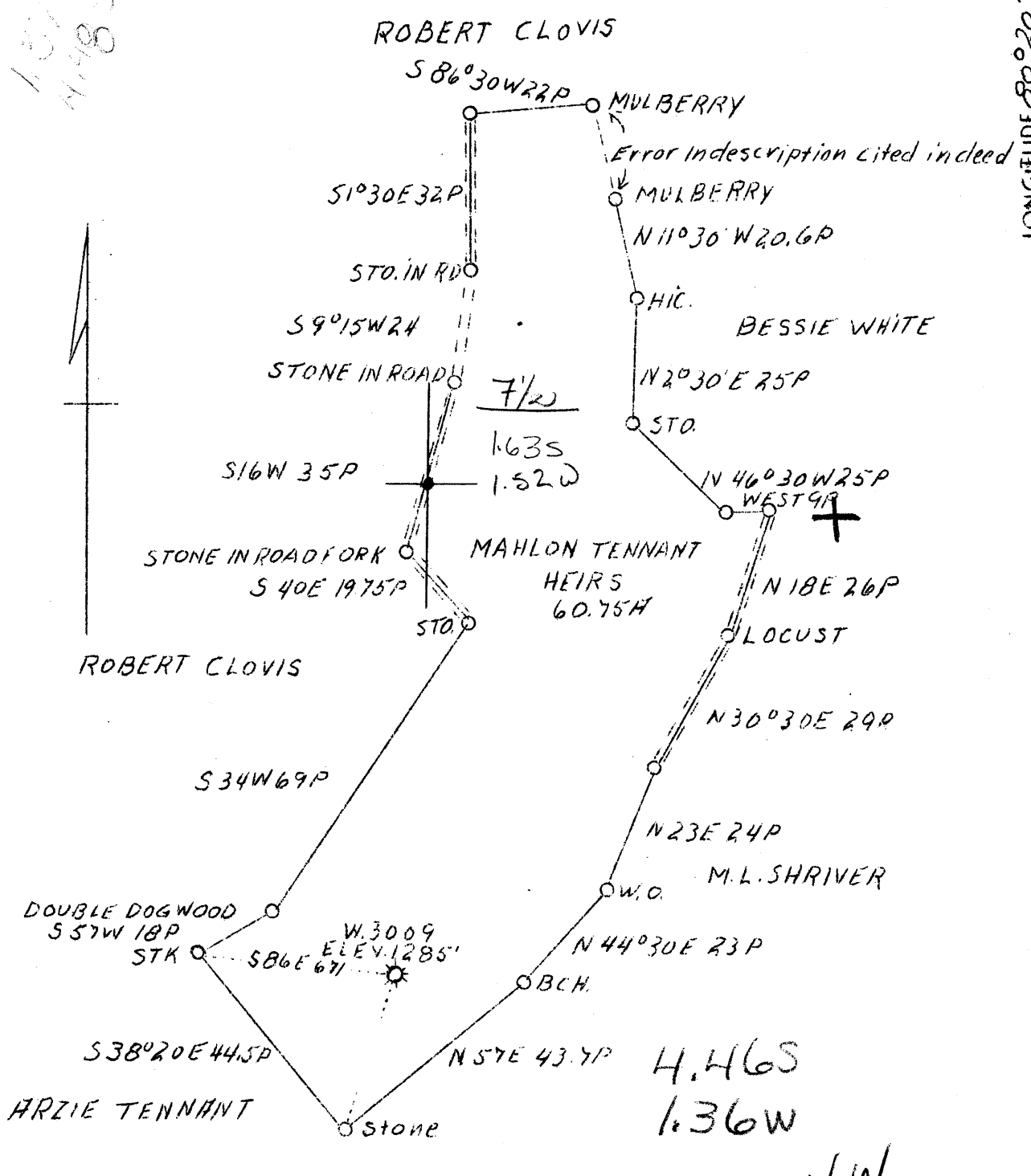


LATITUDE 39° 45'
39° 42' 30"

LONGITUDE 80° 20'

137
N 140



COAL OWNED BY HRS. OF MAHLON TENNANT

1.4 W
4.53

Well ABD. Location from CNG map 1930

Company	Manufacturers Light & Heat Co.
Address	800 Union Bldg., Pgh. Pa.
Farm	Mahlon Tennant Heirs
Acres	60.75
Lease No.	8668
Well (Farm) No.	1
Serial No.	3009
Elevation (SL)	1285
Quadrangle	Mannington N. E. 1/4
County	Monongalia
District	Battelle
Engineer	J. C. Mercer
Eng. Reg. No.	-
Drawing No.	Y-8-212
Date	Feb. 28, 1939
Scale	1" = 300'

NC

STATE OF WEST VIRGINIA
Department of Mines
OIL & GAS DIVISION
Charleston

WELL LOCATION MAP

File No. MON-195-A

x Denotes location of well on U. S. Topographic Maps, scale 1 to 62,500, latitude and longitude lines being represented by border lines as shown.

- Denotes one inch spaces on border line of original tracing.

Formation	Color	Hard or Soft	Top	Bottom	Oil, Gas or Water	Depth Found	Remarks

Date 3-13, 1929

APPROVED THE MANUFACTURERS LIGHT & HEAT CO owner

By H. H. Jowett
(Title)