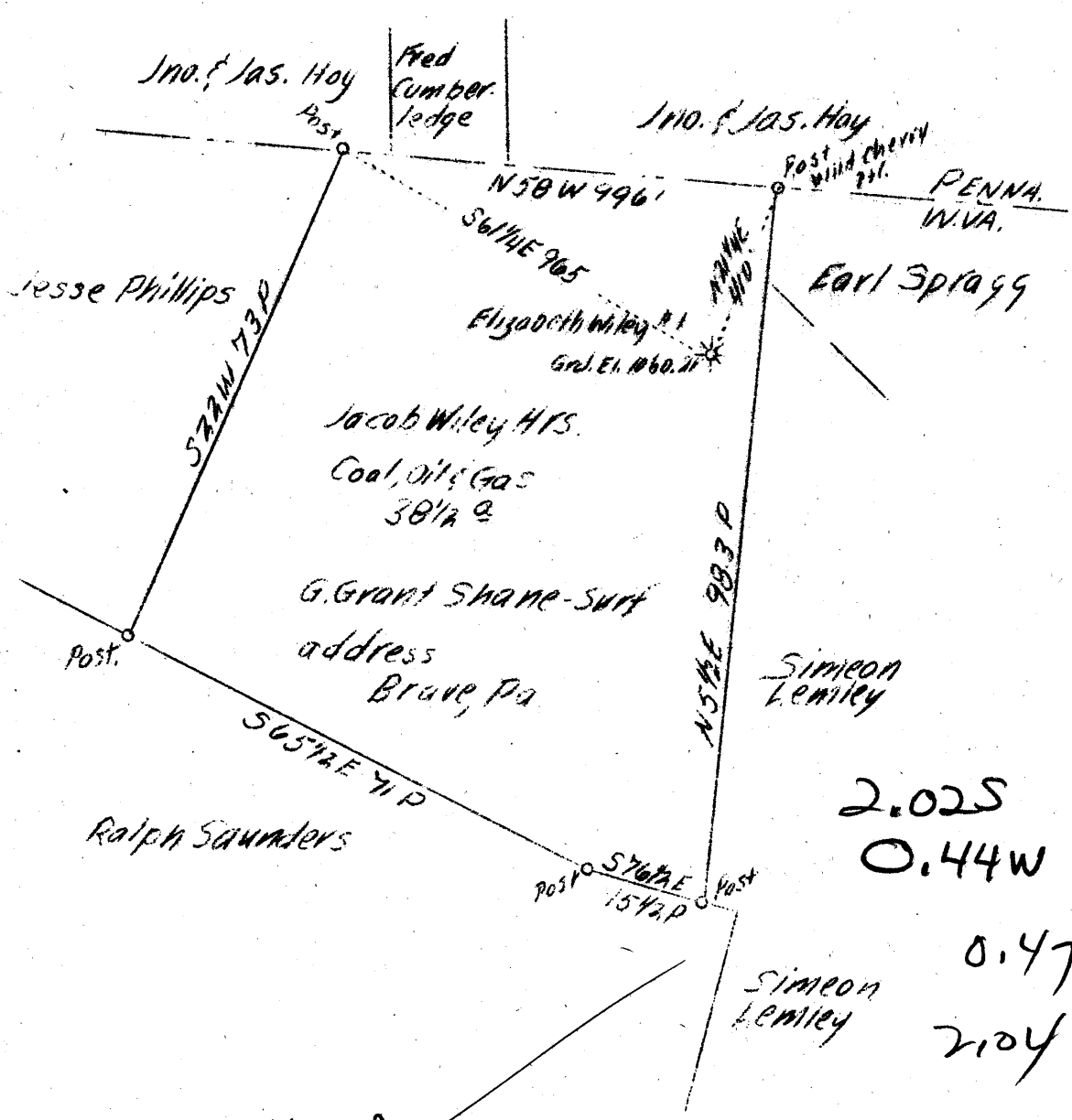


LATITUDE 39° 45'

LONGITUDE 80° 14'

Mph
Score

+



2.025
0.44W
0.47 W
204 Q

Well to be abn'd. ✓ APR 24 1939 N18-19E 21

Company South Penn Oil Co.
 Address 411 7 Ave. Pittsburgh, Pa.
 Farm Elizabeth Wiley
 Acres 39
 Lease No. 26082
 Well(Farm)No. 1
 Quadrangle Mannington
 Countny Monongalia
 District Battelle
 Eng. E.C. Tabler
 Date 4/4/39
 Scale 1" = 400'



STATE OF WEST OF VIRGINIA
 Department of Mines
 OIL AND GAS DIVISION
 Charleston

WELL LOCATION MAP

File No. M2W-198-A

x Denotes location of well on U.S. Topographic Maps, scale 1 to 62,500, latitude and longitude lines being represented by border lines as shown.
 - Denotes one inch spaces on border line of original tracing.

