

Latitude

153s  
.65w

Longitude

Topo Location

7.5' Loc. \_\_\_\_\_ 15' Loc. \_\_\_\_\_  
(calc.) \_\_\_\_\_

Company South Penn Oil Co

Farm Peter B Tennant #2

15' Quad \_\_\_\_\_  
(sec.)

7.5' Quad Blacksville

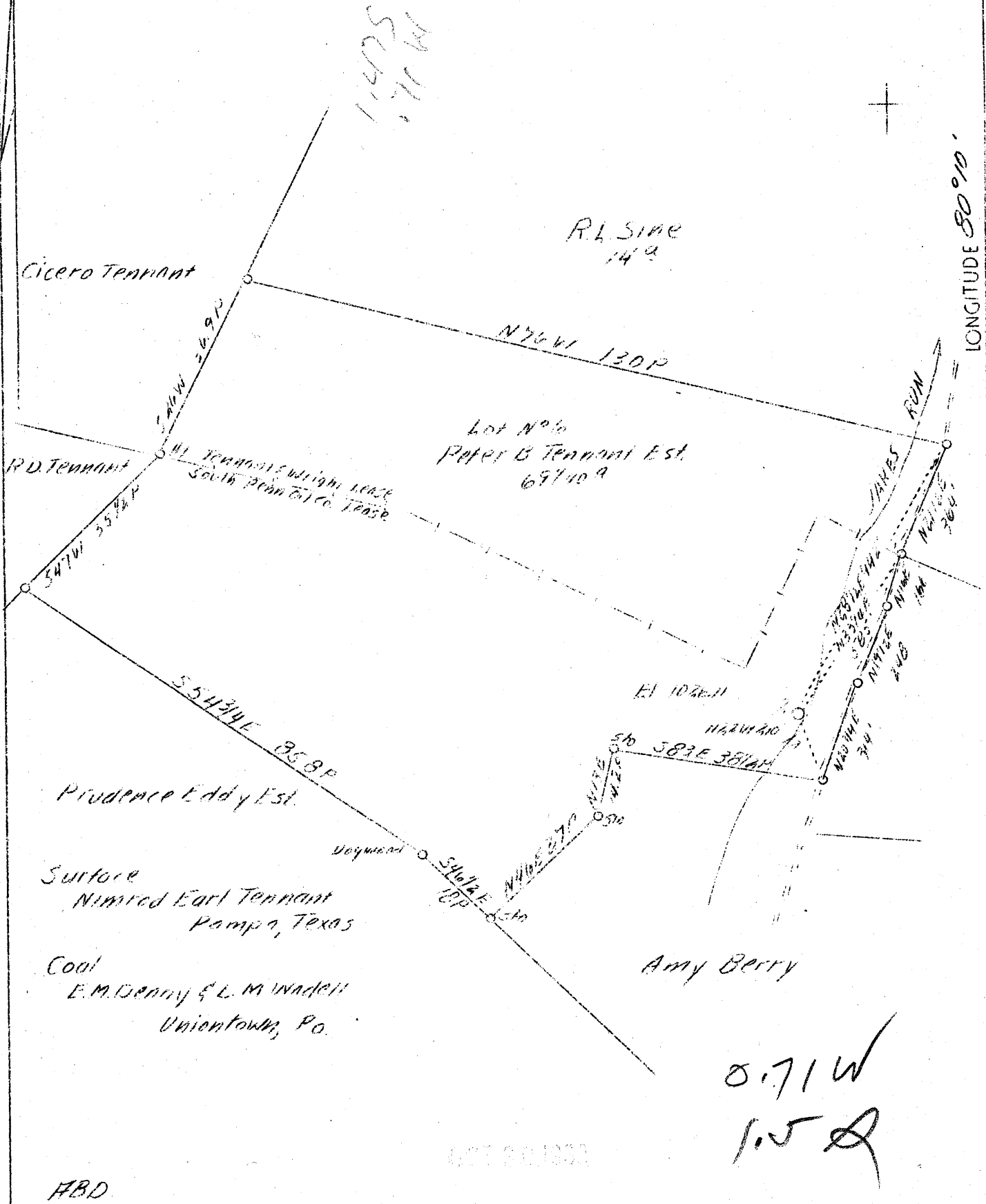
District Clay

WELL LOCATION PLAT

County Obi Permit 30212

LATITUDE 39° 40'

LONGITUDE 80° 10'



ABD

Company	South Penn Oil Co.
Address	411-7th Ave., Pgh. Pa.
Farm	Peter B. Tennant
Acres	216
Lease No.	7943
Well (Farm) No.	2
Elevation (SL)	1026.11
Quadrangle	Blacksville
County	Monongalia
District	Clay
Engineer	E. C. Tabler
Eng. Reg. No.	-
Date	Aug. 24, 1939
Scale	1" = 400'

*(WC)*

STATE OF WEST VIRGINIA  
 Department of Mines  
 OIL & GAS DIVISION  
 Charleston

WELL LOCATION MAP

File No. MON-212-A

x Denotes location of well on U. S. Topographic Maps, scale 1 to 62,500, latitude and longitude lines being represented by border lines as shown.

- Denotes one inch spaces on border line of original tracing.

STATE OF WEST VIRGINIA  
DEPARTMENT OF MINES  
OIL AND GAS DIVISION

282

AD 212-A

WELL RECORD

OIL-GAS

Permit No. 212-A

Oil or Gas Well (Kind)

Company **South Penn Oil Company**  
Address **411 Seventh Ave., Pittsburgh, Pa.**  
Farm **Peter B. Tennant** Acres **216**  
Location (waters) .....  
Well No. **2** Elev. **1026.11**  
District **Clay** County **Monongalia**  
The surface of tract is owned in fee by **Nimrod E. Tennant**  
Address **Pampa, Texas**  
Mineral rights are owned by **D.H. Courtney, Jr. et al**  
Address **Morgantown, W. Va.**  
Drilling commenced **July 27, 1892**  
Drilling completed **December 10, 1892**  
Date shot **See below** Depth of shot .....  
Open Flow **8** /10ths Water in **1"** Inch  
/10ths Merc. in ..... Inch  
Volume ..... Cu. Ft.  
Rock Pressure **108** lbs. ? hrs.  
Oil **5** bbls., 1st 24 hrs.  
Fresh water ..... feet  
Salt water ..... feet

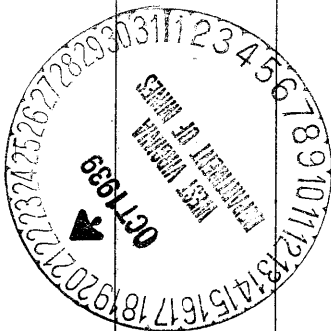
Casing and Tubing	Used in Drilling	Left in Well	Packers
Size			
16.			Kind of Packer <b>Anchor</b>
13.			
10.	<b>505' (Pulled)</b>		Size of <b>2 X 5-3/16"</b>
8 1/4.	<b>750'</b>		
6 5/8.	<b>1525'</b>		Depth set <b>2370'</b>
5 3/16.	<b>1542'</b>		
3.	<b>110'</b>		Perf. top.....
2.	<b>2798'</b>		Perf. bottom.....
Liners Used	<b>4X4 1/2" - 482' 11"</b>		Perf. top.....
			Perf. bottom.....

CASING CEMENTED **0-** SIZE **--** No. Ft. **--** Date **--**  
COAL WAS ENCOUNTERED AT **475** FEET **84(?)** INCHES  
..... FEET ..... INCHES ..... FEET ..... INCHES  
..... FEET ..... INCHES ..... FEET ..... INCHES

Formation	Color	Hard or Soft	Top	Bottom	Oil, Gas or Water	Depth Found	Remarks
<b>Pittsburgh Coal</b>			<b>475</b>	<b>482(?)</b>			
<b>Big Injun Sand</b>			<b>1765</b>				
<b>Drilled to</b>				<b>1915 1/4</b>	<b>1st Pay</b>	<b>1879</b>	
<b>DRILLED DEEPER:</b>							
<b>Big Injun Sand</b>				<b>1915</b>			
<b>Thirty Foot Sand</b>			<b>2259</b>	<b>-</b>			
<b>Fifty Foot Sand</b>			<b>2359</b>	<b>-</b>			
<b>Fifth Sand</b>			<b>2858</b>	<b>2867</b>	<b>Gas</b>	<b>2877</b>	
<b>Total Depth</b>				<b>2897</b>			

SHOT RECORD.

<b>11/20/94</b>	<b>12</b>	<b>Qt. B. Injun</b>
<b>6/7/97</b>	<b>20</b>	<b>"</b>
<b>6/16/00</b>	<b>30</b>	<b>"</b>
<b>2/26/02</b>	<b>40</b>	<b>"</b>
<b>1/18/08</b>	<b>10</b>	<b>" Fifth Sand</b>



Formation	Color	Hard or Soft	Top	Bottom	Oil, Gas or Water	Depth Found	Remarks

Date **October 20,** 19**39**

APPROVED **SOUTH PENN OIL COMPANY,** Owner

By *Elton Young* Land Agent  
(Title)