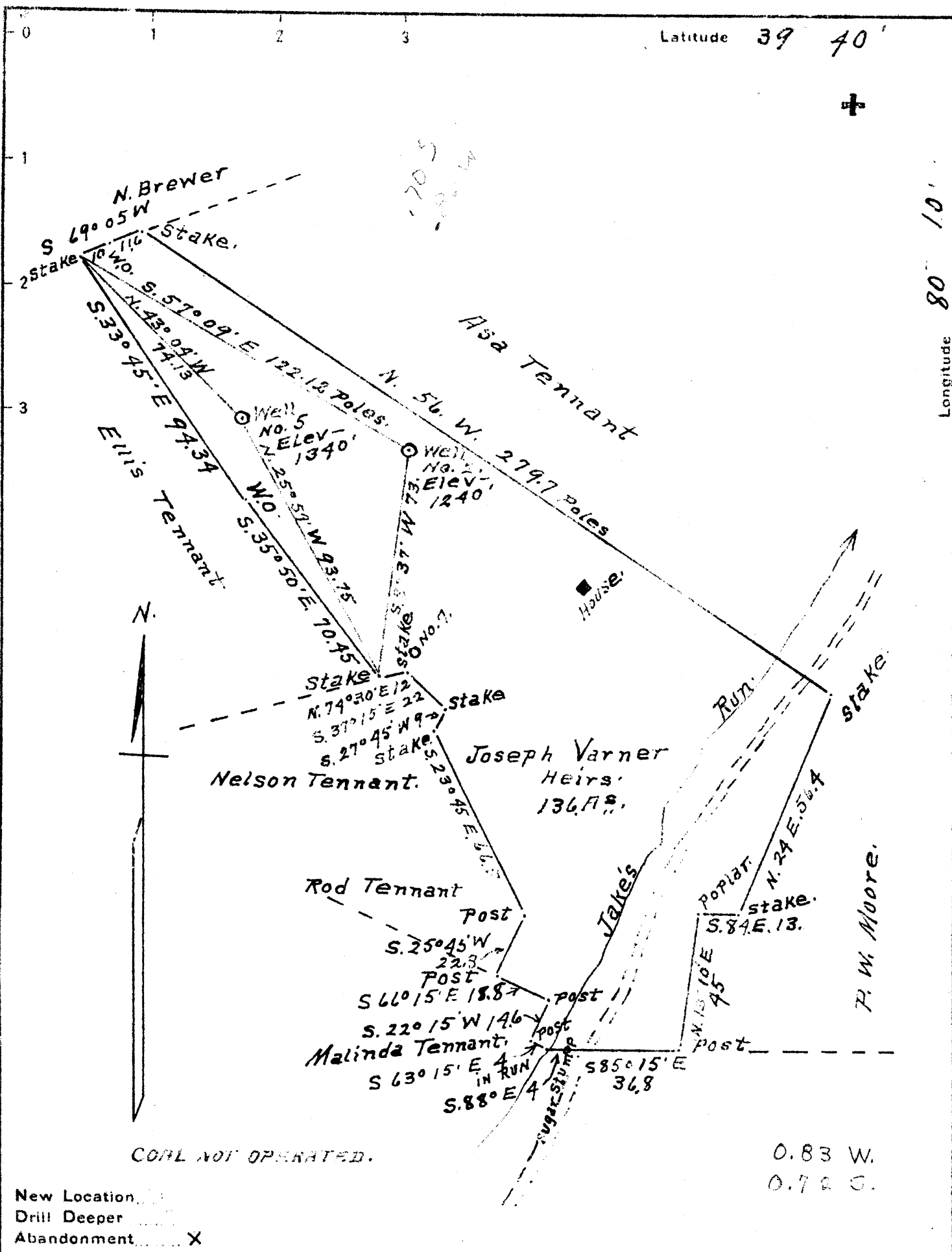




Latitude 39 40'

Longitude 80 10'



New Location   
 Drill Deeper   
 Abandonment  X

Company DUNN MAR OIL & GAS Co.  
 Address Waynesburg Pa.  
 Farm Joseph Varner heirs.  
 Tract ONE Acres 136 - Lease No. \_\_\_\_\_  
 Well (Farm) No.'s 2 & 5 Serial No. \_\_\_\_\_  
 Elevation (Spirit Level) #2 = 1240'; No 5 = 1340'  
 Quadrangle Blacksville  
 County Monongalia District Clay  
 Engineer A. L. Headley  
 Engineer's Registration No. \_\_\_\_\_  
 File No. \_\_\_\_\_ Drawing No. \_\_\_\_\_  
 Date 6-22-1940 Scale 1 inch = 40 poles

STATE OF WEST VIRGINIA  
 DEPARTMENT OF MINES  
 OIL AND GAS DIVISION  
 CHARLESTON

WELL LOCATION MAP  
 FILE NO. MON-235A-237A  
 WELL 5 2

+ Denotes location of well on United States Topographic Maps, scale 1 to 62,500, latitude and longitude lines being represented by border lines as shown.

- Denotes one inch spaces on border line of original tracing.

Oil

WELL RECORD 61-30235

COMPANY

Record of Well No. 5 on J.H. McDermott Oil Farm 127 Acres  
Jakes Run Field Clay District Monongalia County W. Va. State  
 Rig Commenced 19 Completed 19  
 Drilling Commenced 19 Completed 19  
 Cost Per Foot Contractor Address  
 Drillers Names

CONDUCTOR AND CASING USED IN DRILLING

Conductor 13 inch 10 inch 8 1-4 inch 6 5-8 inch 5 3-16 inch 4 inch 3 inch 2 inch

CONDUCTOR AND CASING LEFT IN WELL

Conductor 13 inch 10 inch 8 3-4 inch 6 5-8 inch 5 3-16 inch 4 inch 3 inch 2 inch

840 Liner

Full string

2293

Formation	Top	Bottom	Thickness	Formation	Top	Bottom	Thickness
GRAVEL OR QUICK SAND				FORMATION			
FIRST WATER				SQUAW			
BLUFF SAND				BEREA			
NATIVE COAL				GANTZ			
WBG. COAL				FIFTY FOOT			
MAPEL COAL				THIRTY FOOT			
PGH. COAL				GORDON STRAY			
MURPHY SAND				GORDON			
LITTLE DKRD.				FOURTH			
BIG DKRD.				FIFTH			
GAS SAND				BAYARD			
FIRST SALT SAND				ELIZABETH			
SECOND SALT SAND							
LITTLE LIME							
PENCIL CAVE							
BIG LIME							
BIG INJUN							
<u>Oil</u>	<u>2299</u>						
				TOTAL DEPTH	<u>2310-6</u>		

Gas Test Open

Minute Test

Oil Production

Well Tubed with

Well Tubed with 2293

Tubing Packer Set in

Tubing 6 Ft. working bbl. 11

Sand, Top of Packer,

Anchor, Perforation at, 2305

Perforation

Air Hole 2299

SHOT RECORD

Date	Amount	Size of Shell	Top	Bottom	Oil on Shot	Results
<u>1896</u>	<u>5 qts.</u>					
<u>1897</u>	<u>10 "</u>					
<u>1898</u>	<u>24 "</u>					
<u>1898</u>	<u>24 "</u>					
<u>Feb. 16 1900</u>	<u>40 "</u>	<u>1, 2, 1, 10, qt.</u>	<u>2298</u>	<u>2309</u>		<u>17 1/2 bbls.</u>
<u>May 2 1900</u>	<u>50 "</u>	<u>1 " 2 " "</u>	<u>2298</u>			<u>35 "</u>
<u>Jan. 14 1901</u>	<u>65 "</u>	<u>1 " 1 " 1 15</u>	<u>2297</u>			<u>25 "</u>
<u>Aug. 2 1904</u>	<u>40 "</u>	<u>4 10 qt.</u>				
<u>" 21 1908</u>	<u>80 "</u>	<u>4 " " 2 20</u>	<u>2297</u>			<u>No good</u>
<u>" 27 1908</u>	<u>80 "</u>	<u>2 30 1 20</u>	<u>2297</u>			<u>5 bbls.</u>

REMARKS: