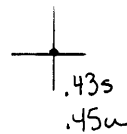


**Latitude**



**Longitude**

**Topo Location**

7.5' Loc. \_\_\_\_\_ 15' Loc. \_\_\_\_\_  
\_\_\_\_\_ (calc.) \_\_\_\_\_

Company Dunn-Man O+G

Farm Asa Tennant #7

15' Quad \_\_\_\_\_  
(sec.)

7.5' Quad Blacksville

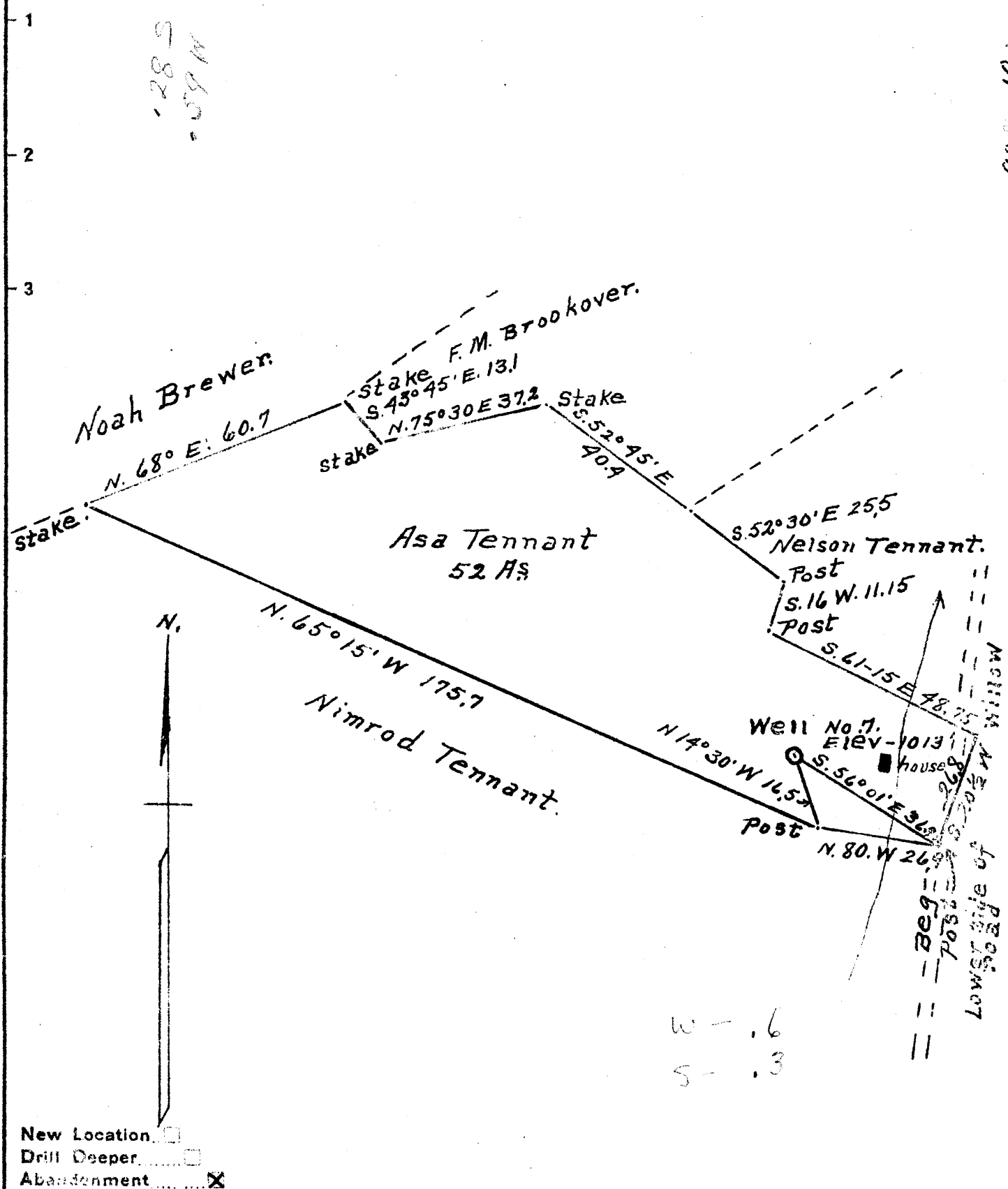
District Clay

**WELL LOCATION PLAT**

County Clay Permit 30240

Latitude 39 40 +

Longitude 80 10



New Location   
 Drill Deeper   
 Abandonment

Company DUNN-MAR Oil & Gas Co.  
 Address Waynesburg Pa.  
 Farm Asa Tennant  
 Tract ONE Acres 52 Lease No. \_\_\_\_\_  
 Well (Farm) No. 7 Serial No. \_\_\_\_\_  
 Elevation (Spirit Level) 1013'  
 Quadrangle Blacksville W.  
 County Monongalia District Clay  
 Engineer A. L. Hendley  
 Engineer's Registration No. \_\_\_\_\_  
 File No. \_\_\_\_\_ Drawing No. \_\_\_\_\_  
 Date 7-20-1940 Scale 1 inch = 500 ft

STATE OF WEST VIRGINIA  
 DEPARTMENT OF MINES  
 OIL AND GAS DIVISION  
 CHARLESTON

WELL LOCATION MAP  
 FILE NO. MON-240A

+ Denotes location of well on United States Topographic Maps, scale 1 to 62,500. latitude and longitude lines being represented by border lines as shown.  
 - Denotes one inch spaces on border line of original tracing.

Oil

WELL RECORD 61-30240

J.H. McDermott Oil

COMPANY

Record of Well No. 7 on Asa Tennant Farm 200 Acres  
Jakes Run Field Clay District Monongalia County W. Va. State  
 Rig Commenced 19 Completed  
 Drilling Commenced 19 Completed  
 Cost Per Foot Contractor Address  
 Drillers Names

CONDUCTOR AND CASING USED IN DRILLING

Conductor 13 inch 10 inch 8 1-4 inch 6 5-8 inch 5 3-16 inch 4 inch 3 inch 2 inch

1335 1534 Full string

Conductor 13 inch 10 inch 8 3-4 inch 6 5-8 inch 5 3-16 inch 4 inch 3 inch 2 inch

1335 1534 Full string 1928

Formation	Top	Bottom	Thickness	Formation	Top	Bottom	Thickness
GRAVEL OR				FORMATION			
QUICK SAND				SQUAW			
FIRST WATER				BEREA			
BLUFF SAND				GANTZ			
NATIVE COAL				FIFTY FOOT			
WBG. COAL				THIRTY FOOT			
MAPLE COAL	<u>526</u>			GORDON STRAY			
PGH. COAL				GORDON			
MURPHY SAND				FOURTH			
LITTLE DKRD.				FIFTH			
BIG DKRD.				BAYARD			
GAS SAND				ELIZABETH			
FIRST SALT SAND							
SECOND SALT SAND							
LITTLE LIME							
PENCIL CAVE							
BIG LIME							
BIG INJUN	<u>Oil</u>	<u>1934</u>					
				TOTAL DEPTH	<u>1953-6</u>		

Gas Test Open

Minute Test

Oil Production 10 bbls. daily

Well Tubed with

Tubing Packer Set in

Sand, Top of Packer,

Perforation

Well Tubed with 1928

Tubing 6 Ft. working bbl.

19 Anchor, Perforation at,

1940 Air Hole 1934

SHOT RECORD

Date	Amount	Size of Shell	Top	Bottom	Oil on Shot	Results
June 29th. 1899	10 qts.	6 ft.	1933			7 1/2 bbls.
Oct. 8 " 1900	25 "	9 1/2 "	1933	1942-6		7 1/2 "
June 9 " 1903	30 "	11 1/2 "	1932			5 "
Dec. 6 " 1906	60 "	2 20 qt.	1932	1946		5 "

REMARKS: