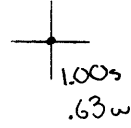


Latitude



1.00s
.63w

Longitude

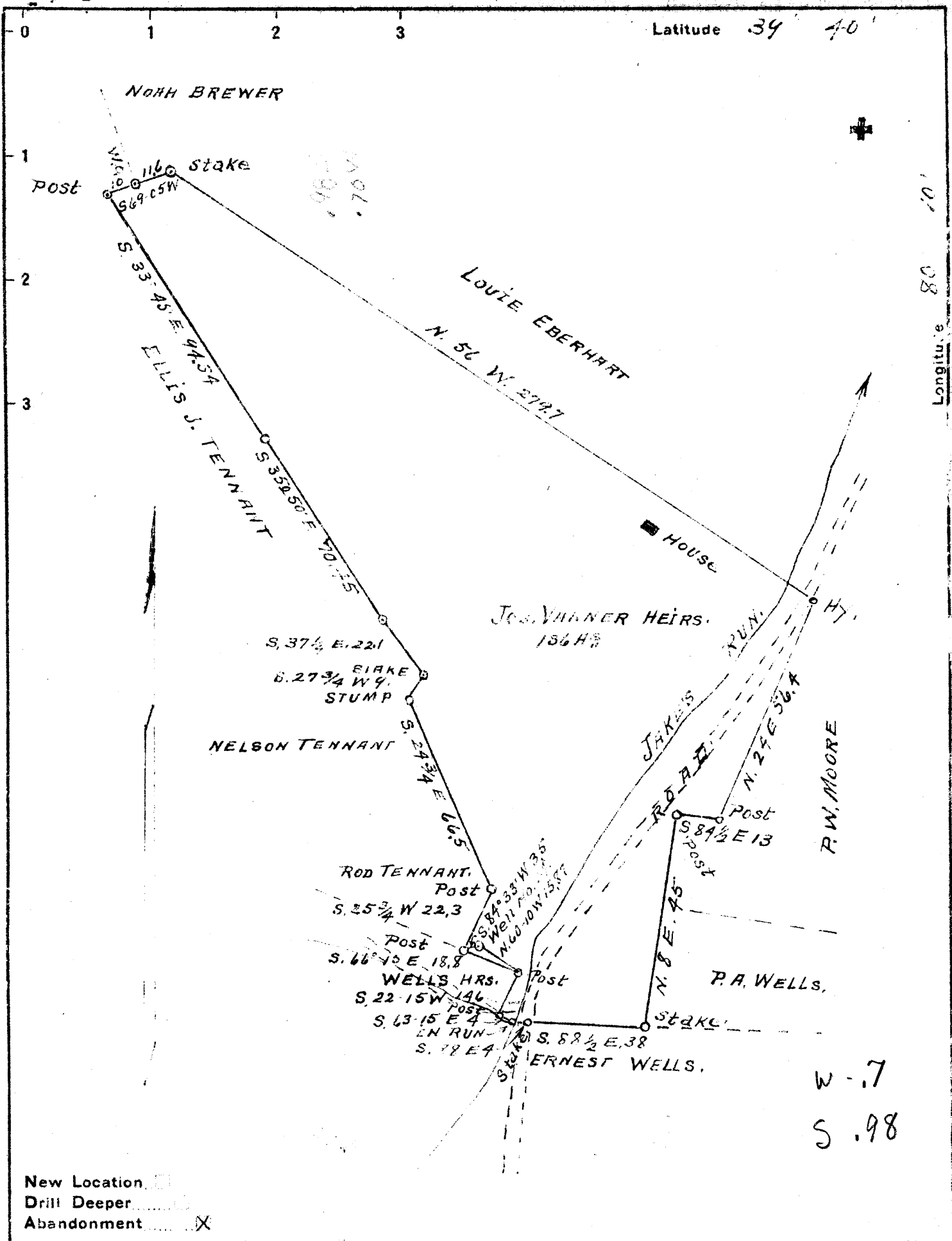
Topo Location

7.5' Loc. _____ 15' Loc. _____
 _____ (calc.) _____

Company Dunn-Man O&GFarm Jos. Vanman Hrs #1415' Quad _____
(sec.)7.5' Quad BlacksvilleDistrict Clay

WELL LOCATION PLAT

County Okla Permit 30245



New Location
 Drill Deeper
 Abandonment

Company DUNN-MAR OIL & GAS CO.
 Address WAYNESBURG, PA
 Farm JOS. VARNER HRS.
 Tract 1 Acres 136 Lease No. _____
 Well (Farm) No. 14 Serial No. _____
 Elevation (Spirit Level) 1025'
 Quadrangle BLACKSVILLE W.
 County MORGANTHAU District CLAY
 Engineer H. S. Headley
 Engineer's Registration No. _____
 File No. _____ Drawing No. _____
 Date 10-3-1940 Scale 1 in = 40 feet

STATE OF WEST VIRGINIA
 DEPARTMENT OF MINES
 OIL AND GAS DIVISION
 CHARLESTON

WELL LOCATION MAP
 FILE NO. MON-245A

+ Denotes location of well on United States Topographic Maps, scale 1 to 62,500, latitude and longitude lines being represented by border lines as shown.

- Denotes one inch spaces on border line of original tracing.

011

WELL RECORD 61-30245

COMPANY

Record of Well No. 14 on J.H. McDermott Oil Farm 127 Acres
Jakes Run Field Clay District Monongalia County W. Va. State
 Rig Commenced 19 Completed 19
 Drilling Commenced 19 Completed 19
 Cost Per Foot Contractor Address
 Drillers Names

CONDUCTOR AND CASING USED IN DRILLING

Conductor 13 inch 10 inch 8 1-4 inch 6 5-8 inch 5 3-16 inch 4 inch 3 inch 2 inch

CONDUCTOR AND CASING LEFT IN WELL

Conductor 13 inch 10 inch 8 3-4 inch 6 5-8 inch 5 3-16 inch 4 inch 3 inch 2 inch

Formation	Top	Bottom	Thickness	840 liner Pulled		Full string		Thickness
				Formation	Top	Bottom	Thickness	
GRAVEL OR QUICK SAND				FORMATION				
FIRST WATER				SQUAW				
BLUFF SAND				BEREA				
NATIVE COAL				GANTZ				
WBG. COAL				FIFTY FOOT				
MAPEL COAL				THIRTY FOOT				
PGH. COAL	480			GORDON STRAY				
MURPHY SAND				GORDON				
LITTLE DKRD.				FOURTH				
BIG DKRD.				FIFTH				
GAS SAND				BAYARD				
FIRST SALT SAND				ELIZABETH				
SECOND SALT SAND								
LITTLE LIME								
PENCIL CAVE								
BIG LIME								
BIG INJUN								
Oil	1870			TOTAL DEPTH	1892			

Gas Test Open
 Minute Test
 Oil Production 30 bbls. Daily
 Well Tubed with 1864 Tubing Packer Set in 6 Ft. working bbl. 22 Sand, Top of Packer, Anchor, Perforation at, 1876 Perforation Air Hole 1870

SHOT RECORD

Date	Amount	Size of Shell	Top	Bottom	Oil on Shot	Results
No date	10qts.					
" "	40 "					
July 10th; 1899	20					No good
Jany. 9" 1902	60	5 3/4 & 1 10ft.	1868	1878		

REMARKS: