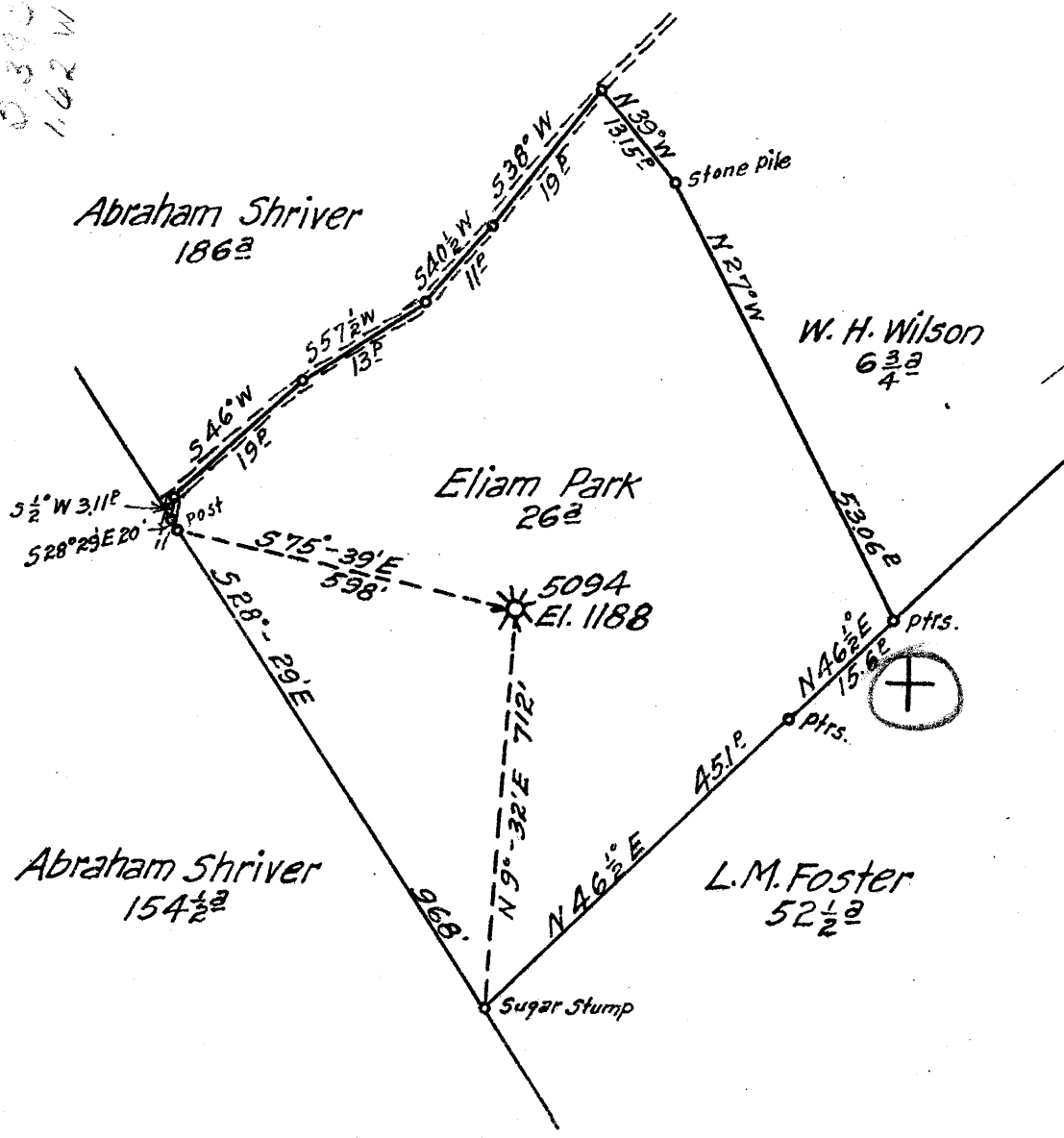


0.300  
1.62 W

1

2

3



1.63 W  
5.46 a

New Location...   
 Drill Deeper...   
 Abandonment...

Map Sheet 17 - Square N15 E19 - FB. 738 P. 7-8

Company Hope Natural Gas Co.  
 Address Clarksburg, W. Va.  
 Farm Eliam Park  
 Tract \_\_\_\_\_ Acres 26 Lease No. 25074  
 Well (Farm) No. 1 Serial No. 5094  
 Elevation (Spirit Level) 1188  
 Quadrangle Mannington  
 County Monongalia District Battelle  
 Engineer W. M. Bowers  
 Engineer's Registration No. 900  
 File No. \_\_\_\_\_ Drawing No. \_\_\_\_\_  
 Date Mar. 9, 1943 Scale 1" = 40'

STATE OF WEST VIRGINIA  
 DEPARTMENT OF MINES  
 OIL AND GAS DIVISION  
 CHARLESTON

WELL LOCATION MAP  
 FILE NO. MON-286-B

+ Denotes location of well on United States Topographic Maps, scale 1 to 62,500, latitude and longitude lines being represented by border lines as shown.  
 - Denotes one inch spaces on border line of original tracing.

"IMPERIAL" TRACING CLOTH  
 K & E CO., N. Y.

STATE OF WEST VIRGINIA  
DEPARTMENT OF MINES  
OIL AND GAS DIVISION

336

WELL RECORD

Permit No. 286-A

~~Oil~~ or Gas Well  
(KIND)

Company Hope Natural Gas Company.  
Address 445 West Main St. Clarksburg, W. Va.  
Farm Eliam Park Acres 26  
Location (waters) (1)  
Well No. 5094 Elev. 1188  
District Battelle County Momongalia  
The surface of tract is owned in fee by \_\_\_\_\_  
Address \_\_\_\_\_  
Mineral rights are owned by \_\_\_\_\_  
Address \_\_\_\_\_  
Drilling commenced Jan. 10, 1918  
Drilling completed May 14, 1918  
Date Shot \_\_\_\_\_ From \_\_\_\_\_ To \_\_\_\_\_  
With \_\_\_\_\_  
Open Flow /10ths Water in \_\_\_\_\_ Inch  
/10ths Merc. in \_\_\_\_\_ Inch  
Volume \_\_\_\_\_ Cu. Ft.  
Rock Pressure \_\_\_\_\_ lbs. \_\_\_\_\_ hrs.  
Oil \_\_\_\_\_ bbls., 1st 24 hrs.  
Fresh water 50 feet \_\_\_\_\_ feet  
Salt water 1864 feet \_\_\_\_\_ feet

Casing and Tubing	Used in Drilling	Left in Well	Packers
Size			Kind of Packer
16.			
13.			
10.	933	Pulled	Size of
8 1/4.	1726	Pulled	
6 5/8.	2154	2154	Depth set
5 3/16.	3073	3073	
3.			Perf. top
2.	3362	Pulled	Perf. bottom
Liners Used			Perf. top
			Perf. bottom

**Not cemented**  
CASING CEMENTED \_\_\_\_\_ SIZE \_\_\_\_\_ No. Ft. \_\_\_\_\_ Dat \_\_\_\_\_  
COAL WAS ENCOUNTERED AT 560 FEET 36" INCHES  
908 FEET 72" INCHES. 789 FEET 156" INCHES  
\_\_\_\_\_ FEET \_\_\_\_\_ INCHES. \_\_\_\_\_ FEET \_\_\_\_\_ INCHES

Formation	Color	Hard or Soft	Top	Bottom	Oil, Gas or Water	Depth Found	Remarks
Native coal			560	563	water	50'	
Pittsburgh Coal			908	914			
Mapletown Coal			789	802			
Little Dunkard			1258	1293			
Big Dunkard			1430	1485			
Gas sand			1600	1612			
First Salt sand			1722	1785			
Second Salt sand			1800	1900	water	1864	
Little Lime			2100	2111			
Pencil cave			2111	2116			
Big Lime			2116	2181			
Big Injun sand			2181	2378	gas	2254- 2264	
Squaw sand			2381	2426			
Gantz sand			2665	2688			
Fifty Foot			2790	2869	oil gas	2814- 2819 2814- 2819	
Thirty Foot			2877	2904			
Gordon Stray			3068	3116	gas	3110	
Gordon sand			3117	3137			
Fourth sand			3134	3184			
Fifth sand			3275	?	gas	3275	
Bayard sand			3332	3335	Gas	3334	
Total depth				3362			



Formation	Color	Hard or Soft	Top	Bottom	Oil, Gas or Water	Depth Found	Remarks

Date March 9, 1943, 194

APPROVED Hope Natural Gas Company., Owner

By  Gen. Sup't.

(Title)