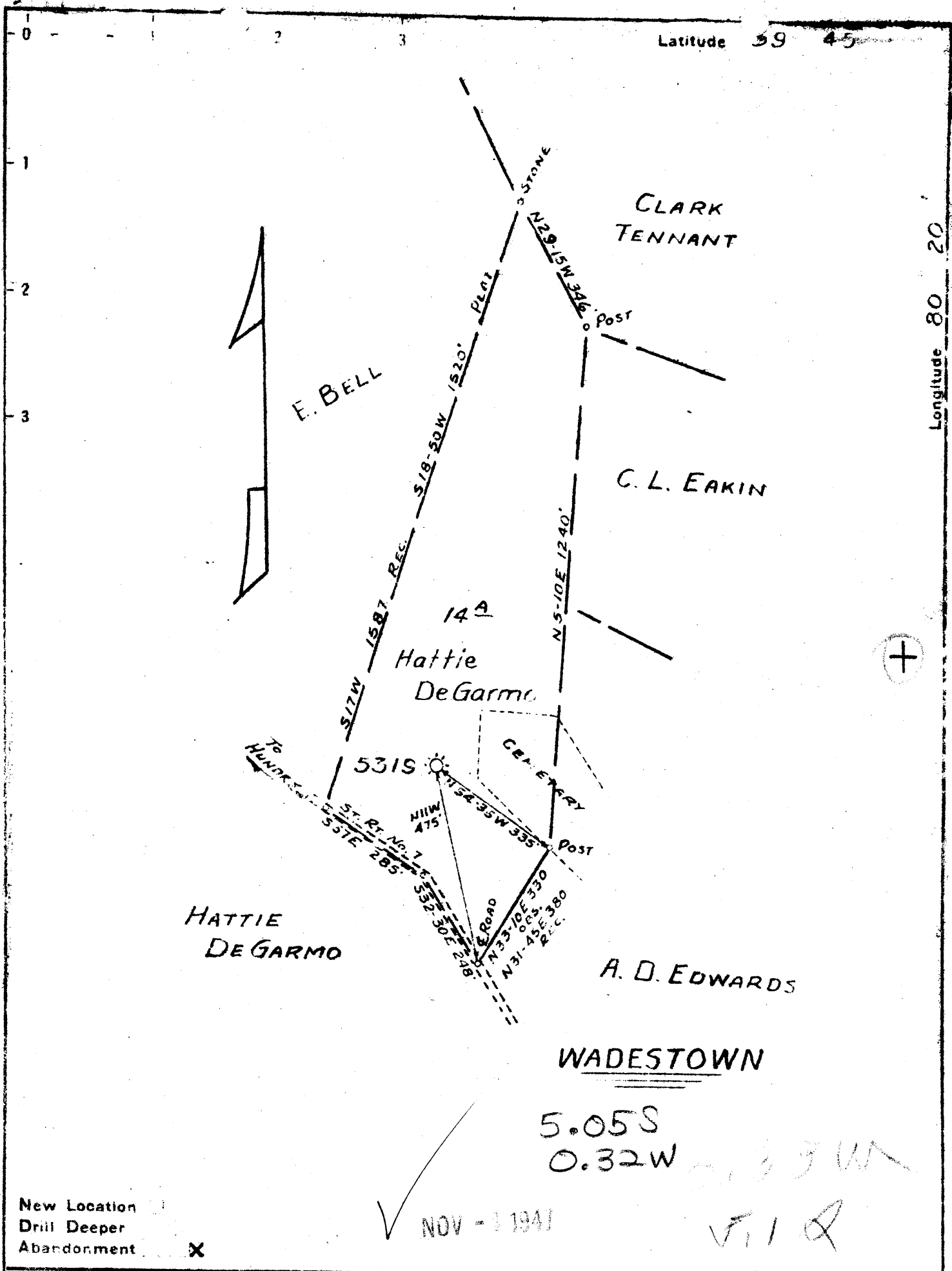


Latitude 39 45

Longitude 80 20



HATTIE DE GARMO

A. D. EDWARDS

WADESTOWN

5.05S
0.32W

2133 W
V11 Q

✓ NOV - 1 1947

New Location
Drill Deeper
Abandonment

Company Pittsburgh & W. Va. Gas Co.
 Address Clarksburg, W. Va.
 Farm Hattie DeGarmo
 Tract _____ Acres 25 Lease No. 17174
 Well (Farm) No. One Serial No. 5319
 Elevation (Spirit Level) 1124 V.A.
 Quadrangle Mannington N. E. 3E
 County Monongalia District Battelle
 Engineer Paul W. Cunningham
 Engineer's Registration No. _____
 File No. D32/p9 Drawing No. _____
 Date 10-15-47 Scale 1" = 300'

STATE OF WEST VIRGINIA
 DEPARTMENT OF MINES
 OIL AND GAS DIVISION
 CHARLESTON

WELL LOCATION MAP
 FILE NO. MON-342-A

+ Denotes location of well on United States Topographic Maps, scale 1 to 62,500, latitude and longitude lines being represented by border lines as shown.

- Denotes one inch spaces on border line of original tracing

HATTIE DE GARMO NO. 1 (5319) - P&G & W. VA. GAS CO. - MON-342-A

Formation	Color	Hard or Soft	Top	Bottom	Oil, Gas or Water	Depth Found	Remarks
Thirty Foot	Light	Hard	2998	2918			
Slate&shell	"	Soft&Hard	2918	2995			
Gordon Stray	"	"	2995	3021			
Slate	Dark	Soft	3021	3024			
Gordon Sand	Light	Hard	3024	3058			
Slate&shells	"	Hard&Soft	3058	3168			
4th. Sand	Light	Hard	3168	3199			
Slate	"	Soft	3199	3208			
5th. Sand	"	Hard	3208	3218	Gas	3210-12'	
Slate&shells	"	Hard&Soft	3218	3255			
Sand shells	"	Hard	3255	3305			
Slate	"	Soft	3305	3381			
Total Depth				3381			

July 27th, 1900

Date....., 19.....

PITTSBURGH & WEST VA GAS CO.

APPROVED..... Owner

By.....

(Title)

Record of Well No. **5319** Located on *Hattie DeGarmo Farm Mar. 25* 1920
 District *Monongalia* County *W. Va.* State
 Division *"H"* District No. *11* Drilled under well Order *1566*
 Rig built by *Craig & Custer* Began *Apr. 24* 1920 Completed *May 6* 1920
 Well drilled by *Funk & Mull* Began *June 23* 1920 Completed *Sept. 16* 1920
 Depth of Well *3381* feet Size of Hole *5 3/16"* Producing *Gas*
 Elev: *1124*

CASED WITH			REMARKS
AMOUNT	SIZE	KIND	
<i>11'</i>	<i>16"</i>	<i>Wood</i>	
<i>349'</i>	<i>10"</i>	<i>Old</i>	
<i>1471'</i>	<i>8 1/4"</i>	<i>Old</i>	
<i>2169'</i>	<i>6 5/8"</i>	<i>Old</i>	
<i>2341'</i>	<i>5 7/16"</i>	<i>New</i>	<i>6 7/8 X 5 3/16 B.H. Packer. Run Back. Pulled and</i>
<i>3239'</i>	<i>2"</i>	<i>Rebound.</i>	<i>Run Back. July 10-39. 887.4 feet</i>
		<i>Rebound</i>	<i>887.4 from B.H. 5 3/16 casing.</i>

COAL VEINS *Fairview 580 Mapletown 537-542 Rh. 930*
583 758

NAME	TOP	BOTTOM	FORMATIONS			REMARKS
			OIL	GAS	WATER	
<i>First salt</i>	<i>1635</i>	<i>1715</i>			<i>930</i>	<i>1 1/2 Barrels per hr.</i>
<i>Second salt</i>	<i>1895</i>	<i>1965</i>				
<i>Little fine</i>	<i>2122</i>	<i>2137</i>				
<i>Pencil Cave</i>	<i>2137</i>	<i>2140</i>				
<i>Big Limes</i>	<i>2140</i>	<i>2215</i>				
<i>Big Drump</i>	<i>2215</i>	<i>2405</i>			<i>2132-36 2296 2M2"</i>	<i>900 ft. - 2 hrs</i>
<i>Fifth foot</i>	<i>2255</i>	<i>2284</i>			<i>2270-72 2270 4W2"</i>	<i>3 gal. 1 hr.</i>
<i>Thirty foot</i>	<i>2292</i>	<i>2918</i>				
<i>Jordan steam</i>	<i>2995</i>	<i>3021</i>				
<i>Jordan sand</i>	<i>3024</i>	<i>3058</i>				
<i>Fourth sand</i>	<i>3168</i>	<i>3192</i>				
<i>Fifth sand</i>	<i>3208</i>	<i>3218</i>		<i>3210-12</i>	<i>.9W2"</i>	<i>MO. 1161- order.</i>

[Handwritten signature]
1941

Copy 9-20-1940 - J.H.S.
Cleaned out Oct 1940.
Cleaned out 3280-68 ft Below
9/10 W 3/4 F.M. Gas

30 Sec. 7 lbs. 5 7/16 X 2"
 1 Min. 4 " 3 "
 2 " 6 " 4 1/2 "
 " 13 " 10 " 3 W 2"
 " 27 " 20 "
 " 49 " 30 "
 " 65 " "
 Pressure 657-13 hrs. in Sept. 23-1920
 Sept. 17-1920 19

Shot with 20 grain Sifted sand
 Sept. 21-1920

¹⁹
 WELL TUBED AND PACKED Sept. 23 1920

VIZ:- 163 lbs. 3239 ft. of 2" tubing. Reclaimed June 1929 -
 1-5 7/16 X 2" Hook Wall Packer.
 3 lbs. 67 ft. 2" anchor
 7-2" R. & L.
 1-2" Plug in bottom of tubing.

FIRST PRESSURE TEST IN	2"	TUBING	REMARKS
30 Sec.	14	lbs.	
1 Min.	20 1/2	"	
2 "	33	"	
5 "	70	"	
10 "	130	"	
30 "	225	"	
30 "	305	"	
Lock Pressure		" in	
Taken Sept. 25-1920 19			
By			

MATERIAL FOR THIS WELL RECEIVED FROM FOLLOWING SOURCES:

5300 Lumber, Rig Irons and Rig Timbers (old) from A. W. 5007
 5700 Lumber (new) @ 35.00 197.50 John K. Poyner & Co.
 240 Lumber (new) @ 35.00 84.00 John K. Poyner & Co.
 100 Nails